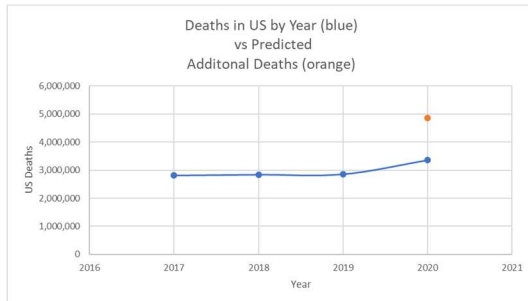


Question 1 – Was the Prediction that 2,200,000 deaths in America Valid?



References:

<https://www.businessinsider.com/coronavirus-uk-report-projects-2-million-deaths-without-action-2020-3?op=1>

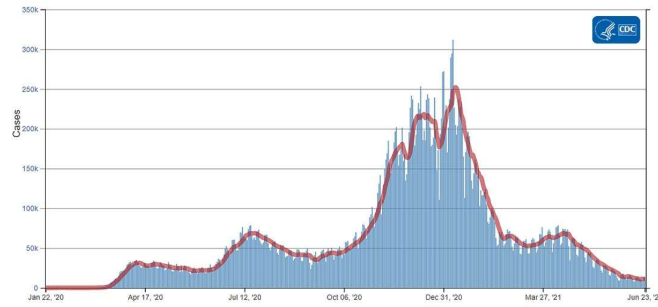
https://media.defense.gov/2020/May/18/2002302024/-1/-1/1/FAQ_USNSCOMFORT_V6.PDF

Paper:

<https://www.imperial.ac.uk/media/imperial-college/medicine/sph/ide/gida-fellowships/Imperial-College-COVID19-NPI-modelling-16-03-2020.pdf>

Neil M Ferguson, Daniel Laydon, Gemma Nedjati-Gilani et al. Impact of non-pharmaceutical interventions (NPIs) to reduce COVID-19 mortality and healthcare demand. Imperial College London (16-03-2020), doi: <https://doi.org/10.25561/77482>.

Question 2 – Is the Vaccine the Only Path to Lower COVID Numbers?



June 25 2021 CDC weekly report retrieved from <https://www.cdc.gov/coronavirus/2019-ncov/covid-data/covidview/past-reports/06252021.html>

Question 3 – What is the Collateral Damage of Our National Policy?

Delay or Avoidance of Medical Care Because of COVID-19– Related Concerns — United States, June 2020

Weekly / September 11, 2020 / 69(36):1250–1257

Mark É. Czeisler^{1,2}; Kristy Marynak, MPP^{3,4}; Kristie E.N. Clarke, MD³; Zainab Salah, MPH³; Iju Shakya, MPH³; JoAnn M. Thierry, PhD³; Nida Ali, PhD³; Hannah McMillan, MPH³; Joshua F. Wiley, PhD¹; Matthew D. Weaver, PhD^{1,5,6}; Charles A. Czeisler, PhD, MD^{1,5,6}; Shantha M.W. Rajaratnam, PhD^{1,2,5,6}; Mark E. Howard, MBBS, PhD^{1,2,7} ([View author affiliations](#))

Increases in suicidal thoughts



References

https://www.cdc.gov/mmwr/volumes/69/wr/mm6932a1.htm?s_cid=mm6932a1_w#T2_down

<https://www.cia.gov/the-world->

[factbook/static/c67d8300b00c72e9ddda3b006f3524f0/US_popgraph2021.jpg](https://www.cia.gov/the-world-factbook/static/c67d8300b00c72e9ddda3b006f3524f0/US_popgraph2021.jpg)

Question 4 – How Effective is the Vaccine in Israel?

References

Web article: <https://www.israelnationalnews.com/News/News.aspx/312538>

Paper: <https://www.medrxiv.org/content/10.1101/2021.08.24.21262415v1.full.pdf>

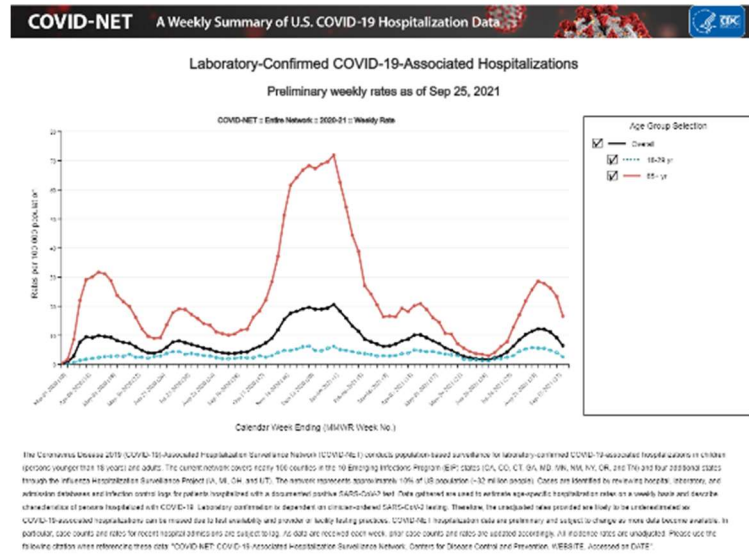
NPR Version: <https://www.npr.org/sections/goatsandsoda/2021/08/20/1029628471/highly-vaccinated-israel-is-seeing-a-dramatic-surge-in-new-covid-cases-heres-why>

Question 5 – How Effective is the Vaccine at Harvard?

Reference

<https://www.cbsnews.com/news/harvard-business-school-online-covid-19/>

Question 6 – Are College-Age Students Going to the Hospital?



Retrieved from [COVID-19 Hospitalizations \(cdc.gov\)](https://www.cdc.gov/covid-net/)

Question 7 – At what rate are College-Age Students Dying?

Death from all causes

	Total deaths	Deaths per 100K	Times less likely to die
Age	3,358,814	828.7	
15–24	35,470	83.2	10.0
25–34	72,678	157.9	5.2

Conclusion: a person 15-24 is 10x less likely to die than an average person

Deaths from COVID

	COVID-19 deaths	Deaths per 100K	Times less likely to die
Age	337,883	91.5	
15–24	587	1.4	65.4
25–34	2,527	5.5	16.6

Reference

Provisional Mortality Data — United States, 2020 Weekly / April 9, 2021 / 70(14);519–522 retrieved from <https://www.cdc.gov/mmwr/volumes/70/wr/mm7014e1.htm>

Question 8 – Is it Valid to Reason that a COVID Vaccine is just like any other vaccine?

References

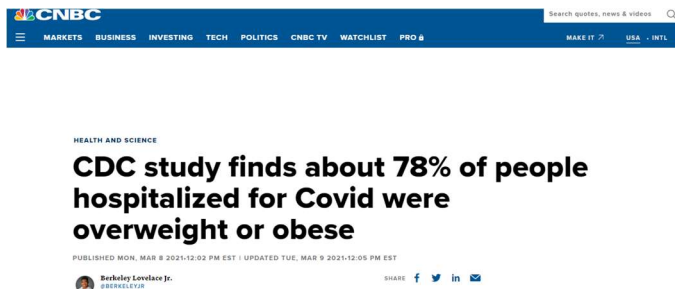
<https://www.cdc.gov/smallpox/history/history.html>

<https://www.fda.gov/news-events/press-announcements/fda-approves-first-covid-19-vaccine>

A good summary of vaccines vs time:

<https://www.chop.edu/centers-programs/vaccine-education-center/vaccine-history/developments-by-year>

Question 9 - Are Underlying Conditions a Factor?



References

https://www.cdc.gov/pcd/issues/2021/21_0123.htm

<https://www.cnbc.com/2021/03/08/covid-cdc-study-finds-roughly-78percent-of-people-hospitalized-were-overweight-or-obese.html>