

Dedication
Harry Meshel Hall
Youngstown State University

DEDICATION

Harry Meshel Hall
Youngstown State University
January 31, 1986

PROGRAM

Presiding Officer

Neil D. Humphrey
President

Invocation

The Rev. Fr. John Karabatsos
Pastor, St. Nicholas Greek Orthodox Church

Remarks

The Honorable Richard F. Celeste
Governor, State of Ohio

Description of Building

Bernard T. Gillis
Provost

Presentation of Building

Charles W. Schafer
Vice President, Hanahan-Strollo and
Associates, Inc.

Presentation of Key

William J. Lyden
Member, Building and Property
Committee, Board of Trustees

Acceptance of Building and Unveiling of Portrait

Paul M. Dutton
Chairman, Board of Trustees

Address

The Honorable Harry Meshel
State Senator, 33rd District of Ohio

Response

John J. Fetch
President, Student Government
Duane F. Rost
Professor of Electrical Engineering and
Chairperson, Academic Senate

Benediction

Dr. Morris W. Lee
Pastor, Third Baptist Church



*Educational growth is
a critical component of
the region's well-being. . .*

Few individuals in the history of the Mahoning Valley have demonstrated a stronger commitment to the development of the region than **SEN. HARRY MESHEL** (33rd District of Ohio).

First elected to the Senate in 1970, Sen. Meshel has served continuously since, and is currently minority (Democratic) leader. Other Senate posts he has held include president and majority leader, majority whip and assistant president pro tem. He also served from 1974 to 1981 as chairman of the finance committee, and has held a number of leadership positions in national state legislative service.

Since taking office, Sen. Meshel has advocated educational growth as a critical component of the region's well-being. He has forged a strong link between Youngstown State University and the Ohio General Assembly, helping to secure with the support of other legislators over \$87 million in capital improvements funding for the University. He provided the impetus for expanding YSU's academic and research programs in advanced technology, then obtained state funding to house these programs in a new, \$15-million facility -- to be named Harry Meshel Hall in recognition of his efforts. Under Sen. Meshel's leadership, a consortium was formed by YSU and two other state universities to establish a medical school (Northeastern Ohio Universities College of Medicine) in this region. Sen. Meshel also played an important role in the development of the osteopathic teaching facility located in Youngstown.

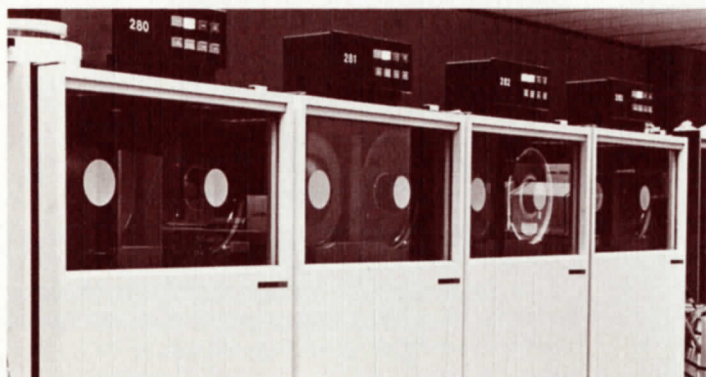
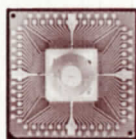
In addition to the support he has given to education in the Mahoning Valley, Sen. Meshel has helped steer over \$26 million in capital improvements funding into the region. Most of the funding has gone directly into facilities to benefit assistance programs that improve the quality of life in the community. Other important projects, such as the \$2.8-million CASTLO Industrial Park and the Mahoning Valley Economic Development Corporation (MVEDC) developed by Sen. Meshel in response to the closing of area steel mills, reflect his efforts to stimulate the expansion of business and employment here.

Sen. Meshel's legislative record overall is unparalleled in the Ohio General Assembly. His legislation produced an economic development program that provided one-half billion dollars for business expansion and job creation -- an accomplishment unmatched by any state in the nation. His bills that opened the doors of employment for the handicapped received national attention and special recognition from the President.

Also particularly significant are Sen. Meshel's bills that required use of domestic steel in state construction contracts, imposed strict regulation on disposal of hazardous wastes, created more stringent penalties for crimes against the elderly, and required buildings and public places to be barrier-free and accessible to the handicapped.

In addition to his many achievements in government and community organizations, Sen. Meshel has been honored with numerous awards and commendations. Among them are the Distinguished Service Award from the President of the United States; the 1982 Governor's Award for his efforts to improve the quality of life for all Ohioans; the John E. Fogerty Award from the Governor's Committee on Employment of the Handicapped; the Easter Seal Society's Helping Hand Award; the Ohio Disabled Veterans' Distinguished Service Award; and an honorary Doctor of Laws degree from the Ohio College of Podiatric Medicine.

A native of Youngstown and a graduate of East High School, Sen. Meshel received a Bachelor of Science in Business Administration degree with honors from YSU and a Master of Science degree in urban land economics from the Columbia Graduate School of Business. He has also completed advanced graduate studies in management science at the University of Wisconsin.



HARRY MESHEL HALL uniquely positions Youngstown State University to make a dramatic contribution to education and training in high technology.

The center of instruction, research and applications in advanced technology at YSU, Harry Meshel Hall provides 87,000 square feet of usable space on four levels. The \$15-million structure houses facilities for academic and administrative computer use, as well as computer classrooms and laboratories, faculty offices, and student study and relaxation areas.

Of striking contemporary design, Meshel Hall is constructed of white Indiana limestone and poured-in-place concrete. A PPG panel system that surrounds the top floor in a ribbon of reflective glass distinguishes its exterior.

The main entrance to Meshel Hall is via a new walkway on the second level, connecting it to the pedestrian walkway that bridges Wick Avenue and links the central campus with the parking deck. The second level extends over the entrance/exit driveway to the parking deck. The building offers 100 percent accessibility to the handicapped.

The second-floor atrium, with its open balconies, skylights and glass block enclosure, provides a wide expanse and natural lighting, adding visual interest to the student commons. Interiors are appointed in grey and burgundy, a scheme carried out in patterned carpet tiles, wall treatments, furnishings and cloth-covered work-space dividers.

All interior space is designed on five-foot by five-foot modules which allow moveable partitions to be relocated without affecting the heating, cooling or lighting fixed in the ceiling grid.

The new building features the most modern materials and fixtures to provide maximum efficiency and energy conservation. For example, parabolic lights recessed into the ceilings of all classrooms have sensors that turn the lights off after 12 minutes if thermal stimuli are not present.

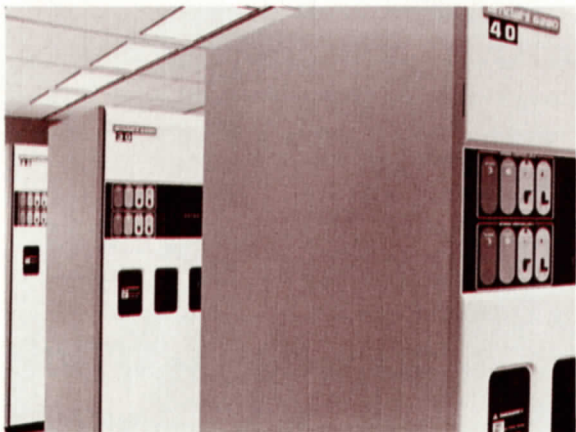
Fire protection measures taken in Meshel Hall exceed the codes required for newly constructed buildings. The entire steel structure has been sprayed with fireproofing material, and a state-of-the-art sprinkler system is installed throughout the building. A fire control wall literally "blankets" the southern exposure.



Meshel Hall was designed for optimum teaching, learning and computing efficiency. Housing seven classrooms, a lecture hall seating 100, 13 laboratories with study stations for 790 students, 25 faculty offices and a large student commons, Meshel Hall provides the newest, most advanced computer support facilities in the region. All classrooms are equipped with enclosed large-screen projection systems to enhance instruction in interactive computing, and each classroom has the capability of being converted into a computing laboratory. "User-friendly" furniture, designed specifically for efficient computer use, combines function with aesthetics, and contributes to the building's futuristic appearance.

Meshel Hall contains two types of computer laboratories: personal computer labs containing IBM PCs and IBM 3179 color terminal labs. Both types are equipped with word-processing and spreadsheet programs, and can communicate with the larger AMDAHL unit. The PCs are also linked to each other, providing communication between terminals anywhere on campus.

Top levels of the building provide space for the University Computer Center and its staff, including a visitors' viewing area for the 6,500-square-foot mainframe computer complex. The complex is built on an 18-inch raised floor which allows the system's cable and wire connections to be kept cool by air forced under the flooring. Additional features include output bins for ease in picking up computer print-outs; a technical manual room with



reference material on all computers installed on campus; and a convenient paper storage room and loading dock to make transporting computer materials easier.

The mainframe computer, an AMDAHL 5868 multiprocessor, consists of two central processing units that work in tandem. Student work is run on one processor while administrative work is run on the other, allowing for simultaneous processing of both types of programs. All modems for the computer system were manufactured in Youngstown, facilitating their maintenance.

The possibility of connection to the WYSU radio tower located immediately to the north of Meshel Hall offers the Computer Center the potential to transmit and receive data from any input/output microwave station in the state.

The new facility has enabled the University to expand its educational scope and broaden its computer-oriented occupational training.

Among those academic units utilizing Meshel Hall is the Computer Science program within the College of Arts and Sciences, which has experienced rapid growth as the computer has become a dominant tool in business and industry. Graduates of this program earn a Bachelor of Science degree and are prepared to become computer programmers, systems analysts, microprocessors, data-base administrators, and computer center directors as well as to pursue graduate degrees in computer science.

Other computer-related programs are also housed in Meshel Hall. Both the William Rayen School of Engineering and the Engineering Technology Department of the

College of Applied Science and Technology (CAST) are introducing instruction in microprocessors and robotics.

The Computer Technology program, also a part of CAST, offers application-oriented computer courses leading to the Associate and Bachelor of Science in Applied Science degrees, preparing graduates to become computer operators, programmers and systems analysts.

CAST's Secretarial Studies program will use the new building's equipment for instruction in the use of electronic equipment for information- and word-processing.

Additional uses of the new building and its resources include computer-aided design/computer-aided manufacturing applications, systems analysis, business-gaming, operations research, and general and computer-aided instruction.

Although the building is located at YSU, its influence could spread far beyond campus boundaries. Meshel Hall is expected to serve as an important retraining center for jobs with computer applications, and offer advanced technology to the surrounding Youngstown area and the northeastern region of Ohio as well.

Architect

Hanahan-Strollo and Associates, Inc.

Contractors

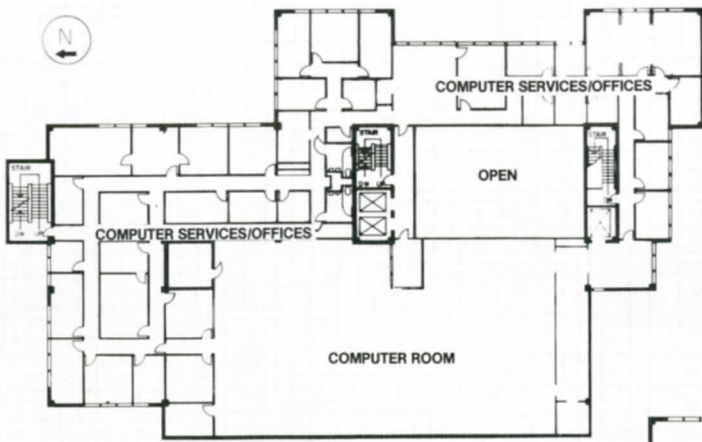
General Contractor
Massaro Corporation

Plumbing
Conti Plumbing & Heating Company
Heating, Ventilating and Air-Conditioning
Aerotech Mechanical Contractors, Inc.

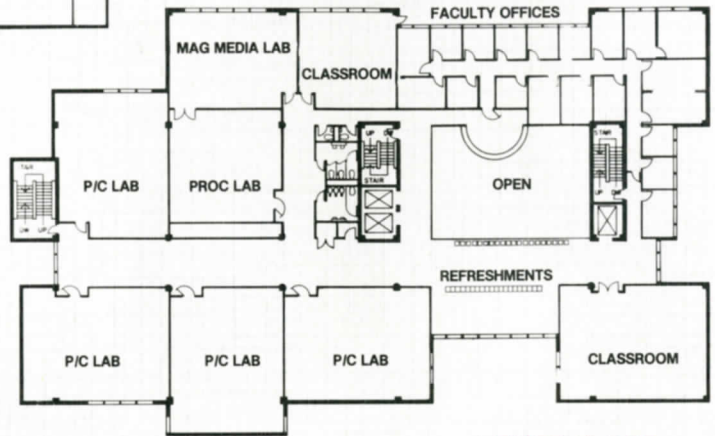
Electrical
Evets Electric, Inc.

Fire Protection
Fireguard, Inc.

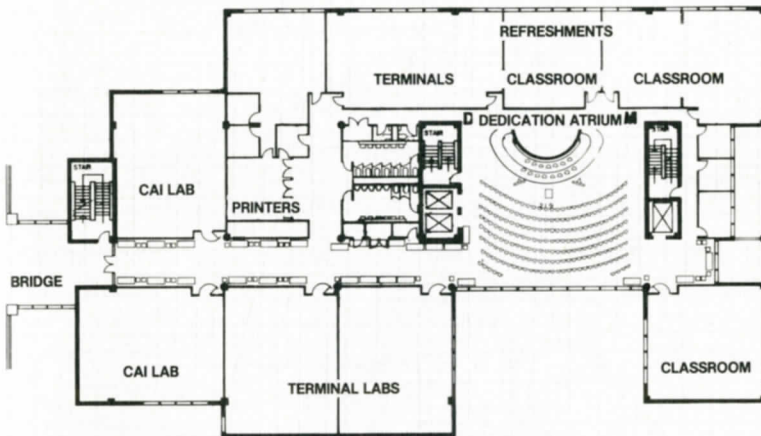
Furniture
GF Furniture Systems, Inc.



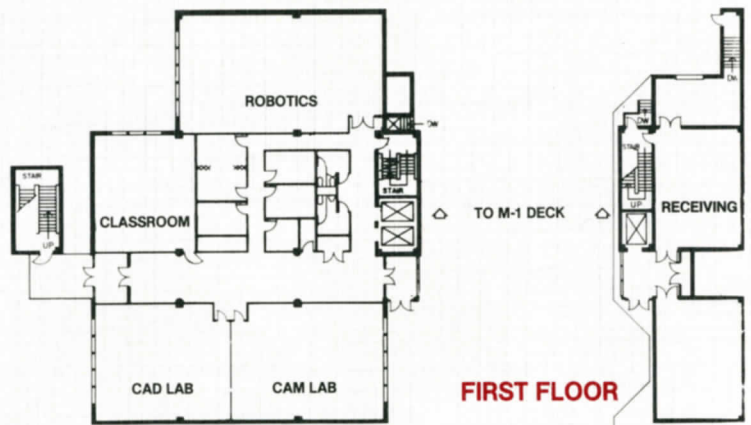
FOURTH FLOOR



THIRD FLOOR



SECOND FLOOR



FIRST FLOOR

Funds appropriated by the Ohio General Assembly made construction of this facility possible. Particular attention is given to the following area legislators:



Robert L. Burch
State Senator
30th District



Thomas E. Carney
State Senator
32nd District



Harry Meshel
State Senator
33rd District



Ronald V. Gerberry
State Representative
71st District



Thomas P. Gilmartin
State Representative
53rd District



John D. Shivers, Jr.
State Representative
3rd District



Michael G. Verich
State Representative
59th District



Joseph J. Vukovich, III
State Representative
52nd District



Joseph P. Williams
State Representative
58th District

Director of
Administrative Services
State of Ohio

William G. Sykes

Deputy Director of Administrative Services

Daniel F. Shields, Sr.

State Architect

Carole J. Olshavsky

Ohio Board of Regents

Richard L. Krabach, Chairman

N. Victor Goodman, Vice-Chairman

C. William Swank, Secretary

Alva T. Bonda

James H. Brennan

Lloyd O. Brown

Robert L. (Bob) Evans

Robert F. Howarth, Jr.

Anita S. Ward

William B. Coulter, Chancellor

YSU Board of Trustees

Paul M. Dutton, Chairman

Earnest Perry, Vice-Chairman

Earl W. Brauninger

John F. Geletka

Edgar Giddens

William J. Lyden

Emily P. Mackall

Michael I. Monus

Frank C. Watson

Franklin S. Bennett, Secretary

YSU High Tech Coordination Committee

Bernard T. Gillis, Provost, Committee Chair

Richard P. Barnes, Assistant Director,
Computer Center

William O. Barsch, Chair,
Engineering Technology

Violet F. Boggess, Chair,
Business Education and Technology

Richard L. Burden, Chair,
Mathematical and Computer Sciences

Albert F. Clare, Assistant Director,
Computer Center

Thomas W. Doctor, Director,
Computer Center

H. Robert Dodge, Dean,
Williamson School of Business

Wade C. Driscoll, Chair,
Industrial Engineering

Richard J. Marsico, Assistant Director,
Computer Center

Rocco Mediate, Director,
Facilities Maintenance

James S. Mineo, Director,
Purchasing

Salvatore R. Pansino, Chair,
Electrical Engineering

Nicholas Paraska, Dean Emeritus,
College of Applied Science and Technology

Victor A. Riehley, Dean,
College of Applied Science and Technology

Edmund J. Salata,
Executive Director, Facilities

Michael J. Skurich, Manager,
Technical Services

George E. Sutton, Dean,
William Rayen School of Engineering

Bernard J. Yozwiak, Dean,
College of Arts and Sciences



