

Poets programmed Page 3	Vets benefitted Page 7
Parking bemoaned Page 8	Summer updated Page 8

Sp. Coll.
1. Y6J3
V. 53



FAST—Sophomore business major Kathy McLendon dishes up some real service with a smile to frosh Byron Porter yesterday along with his Hardee's burger and fries. Hardees, which employees McLendon and other YSU students, was awarded the Kilcawley Center food contract in July.

Roof needs fixing on T&CC building

Completion of the new T&CC building will be delayed possibly until spring quarter due to a "complexity of problems resulting from construction" which necessitate replacing the building's present roof, reported Nick Leonelli, director of campus planning.

The building, which was originally scheduled to open this fall quarter, also needs "minor touch-up problems" corrected, said Leonelli, who noted that "replacement of the roof is only about a six week operation in itself."

"The expense of replacing the

roof will not have to be paid by the University," stated Leonelli, "but just who is responsible for paying the bill has yet to be determined by the State in court."

Besides the problem with the roof, Leonelli also cited the rash of building trades strikes as reasons for the delay in the building's completion. He was hopeful about the spring opening however.

Furniture that will eventually be placed in the T&CC classrooms and offices is presently being stored in the building and in

(Cont. on page 12)

THE JAMBAR

Tuesday, September 30, 1975

YSU

Vol. 53 - No. 1

Ervin to open Lecture Series; will speak on the Constitution

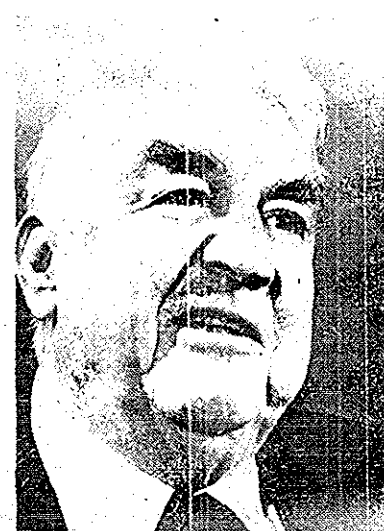
Sam J. Ervin Jr., former North Carolina senator and chairperson of the Senate Watergate committee, will open YSU's Artist Lecture Series at 8 p.m. Thursday, Oct. 23, in Powers Auditorium, as the first Skeggs lecturer.

Ervin, who will speak on the Constitution as part of a Bicentennial program, is a Harvard Law School graduate and a steadfast advocate of First Amendment rights. As chairperson of the Select Committee on Presidential Campaign Activities, he headed a historical process to regulate claims of executive privilege and the making of executive agreements by the President.

Under Ervin's direction, the Senate Watergate committee was able, through its investigations, to

bring about major disclosures of government irregularities that resulted in the filing of criminal charges against a number of top officials.

Other speakers and programs



Sam J. Ervin, Jr.

scheduled for the Series are Germaine Greer, William Windom, Charles Berlitz, the Waverly Consort, Elliott Gould, Geraldine Fitzgerald and Tom

(Cont. on page 5)

Comix honored

"Ohiocon," the largest comic book and comic strip convention in the midwest, will be held Oct. 10-12 at YSU and is sponsored by the Youngstown Comic Art Association.

Free and open at the public, the convention begins at 5 p.m. Friday, Oct. 10, in Kilcawley Center. "Ohiocon" will feature guest artists, films, art displays, an auction and videotape interviews and science fiction episodes of "Star Trek," "Space: 1999," and "Outer Limits," provided by WUAB-TV Cleveland.

Noted guests and lecturers include Youngstown native Paul Gulacy, artist for Marvel Comics; "Out Our Way" cartoonist Ed Sullivan; DC writer Mike Barr; free-lance artist Val Materik of Youngstown and Walt Simonson. Dr. Clyde

(Cont. on page 4)

Food service doing well in first days at Center

Kilcawley Center Director Phil Hirsch reported Friday that the two new food services on campus are working well so far.

Hirsch referred to Hardee's Fast-Food service which replaced Servomation in the Center snack bar, and Broughton Food Service, which is operating in the Old Cafeteria, the resident dining room and the second floor dining room.

Although Hardee's has just been operating since Thursday, Hirsch said the early returns indicate they may double the volume over last year's snack bar food service.

Both new food services were chosen this summer from a field of bidders to replace Servomation, which provided food service in the entire Center. Hardee's has agreed to provide

the Center with ten percent of its gross sales, and Broughton will provide three percent. Servomation gave a six percent return throughout the Center.

Hardee's, which extensively revamped the serving area will be open from 7 a.m. to 10 p.m. Monday through Friday, and from 9 a.m. to 5 p.m. Saturdays.

The Broughton service will serve hot meals in the old cafeteria and the second floor dining room from 7 a.m. to 2 p.m. and will operate a hoagie stop in the Old Cafeteria from 10 a.m. to 8 p.m., Monday through

(Cont. on page 7)

Athletic Post

The Department of Intercollegiate Athletics is actively seeking applications for the position of assistant athletic director, with major responsibilities in the women's intercollegiate athletic program.

Athletic Director Paul Amadio is currently accepting applications for the position.

A master's degree is preferred, with a baccalaureate degree required. Broad administrative and coaching experience are necessary.

Interested applicants may direct their inquiries and letters of application to Paul Amadio, director of athletics, YSU.

363571

CAMPUS CALENDAR

Wednesday, Oct. 1, 1975

Kilcawley Center

9-2 p.m., Alpha Phi Omega Booksale, Arcade
 9-6 p.m., The Alan Davie Art Show, Art Gallery
 10-1 p.m., Panhellenic Rush Sign Up, Arcade
 11-2 p.m., First Aid Club Blood Pressure Readings, Arcade
 12-1 p.m., Intersarsity Christian Fellowship Prayer Meeting, Room 239
 12-2 p.m., History Club Meeting, Room 253
 12-2 p.m., Student International Meditation Society Meeting, Room 240
 12-2:30 p.m., Athletic Council Meeting, Room 216
 3-4 p.m., Comic Art Assn. Meeting, Room 253
 4-5 p.m., Dept. of Fine & Performing Arts Faculty Meeting, Art Gallery
 7:30-8:30 p.m., Placement Office Interview, Room 236
 7:30-9:30 p.m., Student Social Workers Meeting, Room 240
 9-1 a.m., KCPB: Kink Relief "Woody Bowles", Pub
 noon, History Club, Dr. Lowell Satre speaker, Room 253

Beeghly Center

3 p.m., Comic Art, Lobby
 11-2 p.m., Swim Team Bakesale, Lobby
 11-2 p.m., First Aid Club Blood Pressure Readings, Lobby
 4-7:30 p.m., First Aid Club CPR Classes, Kinesology Lab 304
 6-10 p.m., HPE Recreation & Intramurals, Gym & East Deck

Ward Beecher

10-1 p.m., Panhellenic Rush Sign Up, Lobby

Library

7:30-8:30 p.m., Engr. Tech. Dept. View Film Strips, A/V

Jones Hall

2-3 p.m., Polyglot Meeting, Room 312

Engr. & Science 11-2 p.m., First Aid Club Blood Pressure Readings, Lobby

10-1 p.m., Panhellenic Rush Sign Up, Lobby

Dana

4-11 p.m., Dana School Recital, Recital Hall

Thursday, Oct. 2, 1975

Kilcawley Center

8a.m.-6 p.m., Placement Office: Firestone, Room 149
 9-10 a.m., Placement Interview Seminar, Room 236
 9-6 p.m., The Alan Davie Art Show, Art Gallery
 9:45-12 noon, Meeting of all Deans & Department Chairmen, Room 216,217
 10a.m.-1 p.m., Panhellenic Rush Sign Up, Arcade
 11-12 noon, Hellenic Orthodox Assn. Meeting, Room 240
 11-2 p.m., First Aid Club Blood Pressure Readings, Arcade
 12-1 p.m., Intersarsity Christian Fellowship Prayer Meeting, Room 253
 12-2 p.m., HPE Majors Meeting, Room 239
 12-3 p.m., KCPB: Film "Space Odyssey", Room 236
 1-5 p.m., Cont. Education Allied Health Educ. Committee Directors, Room 216

2-7 p.m., Chess Assn. Matches, Room 253
 2:15-3:45 p.m., Foundations of Education Faculty Meeting, Room 238

4-6 p.m., African American Student Union Meeting, Room 239
 7-9 p.m., Afro-American Chorale Rehearsal, Room 236
 7:30-9:30 p.m., Student International Meditation Society Meeting, Room 141

8-11 p.m., Los Buenos Vecinos (Spanish Club) Meeting, Room 253
 9-11 p.m., KCPB: Film "Space Odyssey", Cafe
 9-11 p.m., Alpha Mu Meeting, Room 239
 9-11 p.m., Alpha Kappa Psi Meeting, Room 240

Beeghly Center

10a.m.-1p.m., Panhellenic Rush Sign Up, Lobby
 11-2 p.m., First Aid Club Blood Pressure Readings, Lobby

Ward Beecher

10a.m.-1 p.m., Panhellenic Rush Sign Up, Lobby

Jones Hall

8a.m.-11 p.m., Drama Dept. Construction & Rehearsal, Strouss Aud.
 6-11 p.m., Drama Dept. Movie: "In the Beginning", Strouss Aud.

Engr. & Science

10a.m.-1 p.m., Panhellenic Rush Sign Up, Lobby
 11-2 p.m., First Aid Club Blood Pressure Readings, Lobby

Dana

4-6 p.m., Dana School, Recital Hall
 7:30-11 p.m., Dana School Recital, Recital Hall

Friday, Oct. 3, 1975

Kilcawley Center

8-6 p.m., Placement Office: Firestone, Room 149
 9-6 p.m., The Alan Davie Art Show, Art Gallery
 10-1 p.m., Panhellenic Rush Sign Up, Arcade
 11-2 p.m., First Aid Club Blood Pressure Readings, Arcade
 12-2 p.m., Omicron Delta Epsilon Meeting, Room 253
 12-2 p.m., Intersarsity Christian Fellowship Meeting, Room 239
 12-2 p.m., Committee on Women Luncheon Meeting, Room 220
 12-3 p.m., KCPB: Film "Space Odyssey", Room 236
 3-4 p.m., YSU Comic Art Assoc. Meeting, Room 253
 3-6 p.m., Placement Interview Seminar, Room 236
 3-4 p.m., KCPB: Happu Hour, Pub
 7-9 p.m., Alpha Tau Gamma Meeting, Room 216
 9-1 a.m., Panhellenic Freshman Activity, Cafe

Beeghly Center

10-1 p.m., Panhellenic Rush Sign Up, Lobby
 10-2 p.m., Panhellenic Council Bakesale, Lobby
 11-2 p.m., First Aid Club Blood Pressure Readings, Lobby
 4-6 p.m., HPE Varsity Athletics, East Deck
 6-10 p.m., HPE Recreation & Intramurals, East Deck

Ward Beecher

10-1 p.m., Panhellenic Rush Sign Up, Lobby

Library

7:30-8:30 p.m., Engr. Tech. Dept. View Film Strip, A/V

Pollock

7-11 p.m., Les Bons Vivants Meeting, Social Room

Engr. & Science

10-1 p.m., Panhellenic Rush Sign Up, Lobby
 11-2 p.m., First Aid Club Blood Pressure Readings, Lobby

Dana

4-11 p.m., Dana Recital, Recital Hall

Ohio Bell open to university fight against rate hike

Attorney General William J. Brown has asked the Public Utilities Commission of Ohio (PUCO) to allow seven state universities to present opposition to a rate increase application filed by Ohio Bell Telephone Company.

The petition for leave to intervene in the hearing was filed for YSU as well as Central State, Cleveland State, Kent State, Ohio State, Wright State and Toledo Universities. Brown said the institutions have a total combined enrollment of more than 120,000 students and paid more than \$5 million for phone services in 1974.

Ohio Bell applied to the PUCO on November 7, 1974, for authority to increase and adjust its rates and charges and to change regulations and practices affecting its rates and charges. If approved, the rate increases would generate more than \$214 million in additional revenue for the company. A hearing on the application is set for October 21.

The petition to intervene claims that Ohio Bell's proposed rate increases and regulation changes are unreasonable and will greatly increase the cost of phone service to the universities. Brown also argues that the seven universities should be permitted to intervene in the rate hearing because their interests are not adequately represented by any other party.



GET \$22* TRADE UP for your ArtCarved College Ring! SPECIAL RING DAY

Tuesday September 30 9 a.m. - 4 p.m.

Kilcawley Center Main Concourse

YSU BOOKSTORE KILCAWLEY CENTER

Trade up your gold high school ring and get credit toward the purchase of your permanent college ring! See the ArtCarved College Ring Specialist for Details during these special ring ordering days.

*trade in varies with ring's gold content and current gold price.

ArtCarved College Rings by John Roberts

Now Army ROTC Scholarships come in 4 convenient sizes:

- 1 year.
- 2 years.
- 3 years.
- 4 years.

If you missed the 4-year Army ROTC scholarship and figured the issue was closed, you're only 25% correct. Because if you're a successful college student, you can still win a scholarship for the remaining years of your undergraduate work. Or, in some instances, even for your graduate work!

The Army ROTC scholarships pay tuition, books and lab fees. Plus \$100 per month for up to 10 months a year. And you earn an officer's commission. Scholarships are available for

both men and women. If that seems fair to you, write or phone us for details.

Army ROTC. Learn what it takes to lead.



PMS Youngstown State University 603 Wick Avenue Youngstown Ohio 44555 or call 746-1851 ext. 296/297

Sure, I'm interested in an Army ROTC scholarship. Tell me more - but there's no obligation on my part.

Name _____

Address _____

City _____ State _____ Zip _____

Currently enrolled: _____

I'm completing Freshmen Sophomore Junior

YSU poets to have workshop program for area schools

The YSU English Department is offering the services of several area poets to inaugurate a reading-workshop program in the surrounding area high schools for the 1975-76 school year.

The program is designed to foster an awareness of poetry as a continuing and vital contemporary art form and also to encourage high school students to indulge in their own language-oriented experiments.

Poets participating in the program are current YSU students and recent graduates who have concentrated in developing their own creative writing skills.

In order to make the pilot program as flexible as possible, a group of three or four poets will be available to meet with individual classes or assemblies. The poets can be contracted for single periods or for the entire day.

Program activities would include interpretive readings of original material supplemented with a sampling of traditional and contemporary poets, discussions on the material and additional aspects of the content and form of the poetry, and workshops to assist interested students in developing their own literary talent. Poets also will be available to assist students involved in publishing school literary magazines.

The program will begin the first part of November, and schools interested in participating are encouraged to schedule an appearance sometime during November and December. Starting in January poets will be available for additional visits to schools initially responding to the program.

Any school within a reasonable traveling distance of YSU is eligible to participate in the program. High schools participating are not required to contribute any fee but will be expected to coordinate the day's activities so that the poets' time is constructively engaged. The poets will appear under the sponsorship of the school administration or individual teachers.

Persons interested in involving their school in the program, or those interested in further information, should contact the YSU English department, ext. 261.

Golfers Stroked

Indiana University of Pennsylvania totaled 389 strokes to capture the first annual YSU Fall Golf Invitational last week at Avalon Lakes golf course.

Edinboro State was second with 396 strokes, while the host Penguins Red squad took third with a 405.

Floyd Switzer of YSU was runnerup with a 76 over the par-72 layout.

Scuba Tryouts

Tryouts for YSU's Spotlight Theatre's first production of its 1975-76 season, *Scuba Duba* by Bruce Jay Friedman, will be held at 8 p.m. Tuesday, Sept. 30 and Wednesday, Oct. 1 in Strouss Auditorium, Jones Hall.

'TM' is a simple, natural technique which expands awareness, develops clear thinking and perception, and provides deep rest—resulting in more dynamic activity and full expression of creative intelligence in daily life.

An Introductory Lecture on TRANSCENDENTAL MEDITATION

as taught by Maharishi Mahesh Yogi will be presented by the Students' International Meditation Society

The lecture is free and open to the public.

Tuesday Sept. 30-7:30 p.m. rm. 240 Kil.
Wednesday Oct. 1-12:00 noon

Classifieds

ELTON JOHN— I'll sing you happy birthday in my underwear if you sing Blue suede shoes in yours. Then we can have a party (and don't flubb up). Love, Lowellville. (IC02)

COLLEGE CAMPUS REPRESENTATIVE needed to sell Brand Name Stereo Components to students at lowest prices. Hi commission. No investment required. Serious inquiries ONLY! FAD COMPONENTS, INC. 20 Passaic Ave. Fairfield, New Jersey 07006. Jerry Diamond 201-227-6814. (1530ch)

Stereo and television repairs, all kinds. For quality work and reasonable rates, call Quality Electronics-783-0878 or 757-4025.

Classifieds

PRE-LAW and PRE-MED students, send for booklets of all medical or all law school containing average, minimum and recommended GPA, LSAT and MCAT scores for 1976-77 admittance. Send \$2.00 to Pre-professional Advisory, Bx 13872, Gainesville, Florida 32601. (1530CH)

MUST SELL 1973 MG Midget. 4-speed AM-FM Radio. Green Convertible. Phone Niles, 652-6957 (203C)

COMPANY—FOR E.J.'s birthday. We can have a "Ball Room Blitz." Ready, Jim?...huh!!! (1C02)

JOHN RICHARD— HOPE this quarter is purrrfect for you. Love, Vickie Wart (1c02)

Frank "the CRANK," Happy 23rd. Love, V.E. TANK. (1C02)

YSU
FRATERNITY & SORORITY SYSTEM
presents

A RUSH KICK - OFF
LET'S GET ACQUAINTED

PARTY
FRI. OCT. 3
9p.m. -1

KILCAWLEY CENTER CAFETERIA

2 GREAT BANDS:
"GREAT LAKES BAND"
"MAGNUM (formerly MAC RODENT)"

BEER \$0.05 a glass

YSU STUDENTS ONLY
Sponsored in conjunction
with YSU student government



YSU'S
FRATERNITY
AND
SORORITY
SYSTEM

Input

In the last school year YSU students received the right to have input in the spending of their money, the general fee. They were given safeguards that no material will go into their files without them first having the right to view it, and they made gains in the right to evaluate the faculty.

However, the student body also suffered some setbacks too. A progressive constitution for Student Government was browbeaten out of existence by Student Council's ruling powers. Students had a drop in the number of hours that a student may carry without paying more money and they lost the fight to abolish the foreign language requirement.

In light of these setbacks, I suggest that this year's student body and student leaders press on in the fight for student rights, capitalizing on what successes they've had. I hope they pursue goals that benefit the majority of the student body, not just a few.

Students can make more gains, all it takes is a concentrated effort. Perhaps we may begin to finally receive all the rights that students are entitled to.

F.W.K.

Comic books honored

(Cont. from page 1)

T. Hankey, YSU professor of English, will lecture at 7 p.m. Friday, on "Communication by Notation and Depiction in Comics." Dr. Jean Ketyl, English, will discuss "From Little Nell to Little Orphan Annie--the Triumph of Illiteracy," at 11:30 a.m. Sunday.

In conjunction with "Ohiocon," the Butler Institute of American Art will display their collection of 1930's original newspaper comic strip art. The Youngstown Comic Art Association also will present contemporary art of guest and local collectors in Kilcawley Center.

At 11:30 a.m. Saturday, an auction of comic art memorabilia will be held in Kilcawley Cafeteria. At 2 and 4 p.m., the YSU Planetarium will present "Entrance to Otherwhere," a science fiction chronicle of a strange journey into the mysteries of the universe.

During the convention, outstanding films will be shown in Kilcawley Center cafeteria and Room 236: Friday, "Satyricon" at 9 p.m.; Saturday, "Danger Diabolic" at 7 p.m.; "Barbarella" at 9 p.m.; "Freaks" at 11 p.m.; Sunday, "Neverwhere" at 12:30 p.m.; "Assassination Bureau" at 3 p.m.; and a collection of Max Fleischer, Popeye and Betty Boop cartoons at 1 p.m.

For further information on "Ohiocon" contact Youngstown Comic Art Association, 4472 Barrington Dr.

Feedback

Disagrees with fee increase

To the editor of *The Jambar*:

As a representative of the students and a concerned citizen of Youngstown, I would like to express my disagreement with the recent University decision to increase the tuition fee for full-time students by reducing the number of paid hours from 17 q.h. to 16 q.h.

I disagree with the University decision on the grounds that it acts as a strong deterrent against those students who wish to take 17 q.h. (indeed, the Bursars Office is flooded with add and drop slips from students who couldn't afford the extra \$18.) The decrease in the total number of hours a student takes in the University will in turn decrease the amount of money the University gets in State subsidies. According to a member of the University Budget committee, the

principal factor in determining how much money the University receives from the State is the total number of quarter hours that it teaches. Therefore, considering the implications of this recent University change it appears that the University will in effect deprive the citizens of Youngstown and surrounding area from their fair share of the Ohio tax benefits. In essence I feel that the University will be taking money from the students and losing it from the state.

On behalf of my constituents I would like the Budget Committee to carefully analyze the implications of its decision. If it finds itself standing on solid ground then let us know why. If on the other hand the original reasons for the decision become less clear, then I wish they would accept the fallibility of human nature and find more constructive

means of increasing University revenue.

The citizens of the community have paid hard-earned dollars in State taxes and they would like to collect every penny's worth of the services they deserve. It is my opinion that in handling taxpayers money the University should act with the utmost of care and that necessitates the answering of all pertinent opposing arguments raised by the people who are affected most: the students and the citizens of Youngstown and the surrounding communities.

George Kafantaris
Student Council Representative
Senior
A&S

Hours set for Beeghly recreational use

Effective now until December 6, recreational use of Beeghly for current students, faculty and staff will be as follows: (Note: University ID cards will be required for admittance into all facilities. The Natatorium is the only facility open to the immediate families of faculty, staff and married students.)

NATATORIUM

Monday thru Thursday from 12 noon to 1 p.m. Friday from 6 p.m. to 8 p.m.
Tuesday and Thursday from 6 p.m. to 10 p.m. Saturday from 12 noon to 3 p.m.
Friday from 12 noon to 2 p.m.

Faculty, staff and married students' immediate families may use the pool. All full service faculty, staff and married students must pay a \$3 per quarter fee at the Bursar's Office for each member of the immediate family desiring to use the pool. The receipt for this payment is to be taken to Room 210 in Beeghly for lock, towel and basket assignment. Loss of lock shall result in collection of a replacement fee of \$2 from the ID card owner. Loss of towel shall result in collection of a replacement fee of \$1 from the ID card owner. The family member must present the ID card at the pool each time they wish to swim. All children under the age of 12 or any non-swimmer must be accompanied by a responsible adult.

WEIGHT ROOM

Monday thru Friday from 2 p.m. to 6 p.m. Monday thru Friday from 8 a.m. to 10 p.m.
Tuesday and Thursday from 7 p.m. to 9 p.m. Saturday from 8 a.m. to 3 p.m.

HANDBALL AND SQUASH

GYMNASIUM

Wednesday from 6 p.m. to 10 p.m.
Friday from 6 p.m. to 10 p.m.
Saturday from 12 noon to 3 p.m.

The above times are with the exception of the following class times: Monday and Wednesday from 9 a.m. to 12 noon Tuesday and Thursday from 8 a.m. to 9 a.m.

SHORT DECK

Monday thru Friday from 6 p.m. to 10 p.m.

Saturday from 12 noon to 3 p.m.

LONG DECK

Friday from 6 p.m. to 10 p.m.

Saturday from 12 noon to 3 p.m.

Graduation Deadline
Students who wish to graduate at the end of fall quarter must sign up in the office of their college's dean by 11 a.m. Saturday, Oct. 4.

Davie exhibits at Kilcawley

An exhibition of 12 paintings by noted artist Alan Davie is being presented at YSU's Kilcawley Center Art Gallery now through Thursday, Oct. 2.

A native of Scotland, Davie has exhibited his works all over the world. A major contemporary painter, he is recognized for contributing to the changing forms of modern art.

On exhibit at YSU are: Seal Stopper Number Two; Setting for

the Magician Number Two; Pan's Castle Number Two; Toy for a Serpent Number Two; Mama Icol Number One; Pond Life; Moon Maiden Number Fifteen; Signs for Pink Tuesday; Meditation Castle Number Two; For the Bath of Queen 'B' Number Two; Italian Image; and Fox Watch Number Four.

Kilcawley Center Art Gallery is open Monday through Friday from 9 a.m. to 6 p.m.

THE JAMBAR

Published Tuesdays and Fridays during the regular school year by the students of Youngstown State University and under the authority of the Student Publications Committee. Editorial material and comments are the responsibility of the editors. Opinions expressed in the newspaper are not necessarily those of the staff, the student body or the YSU administration. Advertising rates on request at the *Jambar* office, 629 Bryson Street.

Ann Bryson—Editor-in-Chief
Mary Makatura—News Editor
Marilyn Markovich—Copy Editor
Daye Holan—Managing Editor

News Staff: Bill Boni, Mike Braun, Rick Conner, John Creer, Gina DiBlasio, Debbie Felger, Diane Figural, Janice Folmar, Steve Furgas, Greg Garland, Patty Kemerer, Fritz Kreiger, Chris McEvoy, Linda Porter, David Powers, Peg Takach, Ann Wishart, Neil Yutkin, Joe Zabel.

Darkroom: John Schlabaugh
Photographers: Mike Petrich, Greg Snead
Advertising: Kathy Salaka (Manager), Lynne Munroe (Sales), Becky Maguire

Compositors: Chris Habuda, Sandi Malkin

Secretary: Millie McDonough

Ervin opens series

(Cont. from page 1)

Brokaw.

All the programs are open to the public and most are free, with supporting funds coming from the Leonard T. Skeggs Foundation, YSU and Student Government.

Greer, an active emissary in the feminist movement will speak at 8 p.m. Wednesday, Oct. 29, in Stambaugh Auditorium. Recipient of a Ph.D. degree with a major in Shakespearean studies, Greer, who is Australian, is author of *The Female Eunuch*, considered a landmark publication in the field of human rights.

Also a Bicentennial program, "William Windom Plays Thurber" is scheduled for 8 p.m. Monday, Nov. 17, in Powers Auditorium. Best known for his Emmy Award-winning lead role in television's "My World and Welcome To It," Windom offers a look into author James Thurber's enchanted world.

Berlitz will discuss his best selling book, *The Bermuda Triangle*, at 2 p.m. Wednesday,

Jan. 14 at a location to be announced. An accomplished linguist, Berlitz will review bizarre disappearances connected with the Miami-San Juan-Bermuda triangle and propose theories of strange forces possibly present.

An early music ensemble, The Waverly Consort, performs at 8 p.m. Friday, Feb. 27, in Stambaugh Auditorium. The group will present concerts of medieval, renaissance and baroque music, performing with a large collection of colorful and authentic instruments.

Gould, who is scheduled to speak at 2 p.m. Wednesday, April 7, at a location to be announced, has been at home both on the Broadway stage and the motion picture set. He is best known for his starring roles in "M.A.S.H.," "Getting Straight" and "Bob & Carol & Ted & Alice."

Actress Fitzgerald will star in a one-woman show called "Street Songs," at 8 p.m. Tuesday, April 20, in Powers Auditorium. Fitzgerald blends music and drama for a program about people and songs they sing in the

streets of their native countries.

The second Skeggs lecturer, NBC News White House Correspondent Tom Brokaw, will speak at 8 p.m. Monday, May 3, in Stambaugh Auditorium. Brokaw, anchorman of the Saturday "NBC Nightly News," is a 20-year broadcasting veteran and recipient of the Golden Mike award from the Radio and TV News Association of Southern

California.

A series of Bicentennial American film classics also will be presented during the year in conjunction with the department of speech and dramatics.

Tickets, required only for the Thurber and Waverly Consort programs, may be purchased in advance of \$1 at YSU's Ticket Office, Beegly Center 201, or at the door of \$2 the evening of performance.

Skeggs lectures began in recognition of the role played by the late Leonard T. Skeggs, Sr., in the foundation of YSU. The semi-annual lecture series was

established in 1966 in his memory by the Skeggs Foundation.

According to Dr. Lewis S. Rosenthal, chairperson of the special events committee, which is responsible for the selection of the Artist Lecture Series speakers, lecturers are chosen from different fields on the basis of what they charge to speak and how much student and local interest they may draw.

Rosenthal stated that ideas for who should come to YSU to speak, come primarily from speaking engagement fliers that are sent to the committee.



Germaine Greer



William Windom



Charles Berlitz



Elliot Gould



Geraldine Fitzgerald



Tom Brokaw

Conductor Franz Bibo to open

Butler 'Meet the Artist' series

"Meet the Artist Series," six informal concert discussions with classical artists at 1 p.m., on Fridays, will open the 1975-76 season Oct. 3 with Franz Bibo, musical director of the Youngstown Symphony Orchestra.

The series, held at Butler Institute of American Art, features guest artists appearing with the Youngstown Symphony Orchestra.

Sessions, moderated by Maestro Bibo, are sponsored by YSU's Dana School of Music and office of continuing education

and public service.

Guest artists for 1975-76, in addition to Bibo on Oct. 3 and April 30, are: Vladimir Viardo, Oct. 31; Heidi Lehwalder, Nov. 28; Charles Treger, Jan. 30; and Ruth Laredo, April 2. Insights into the personalities of the guest artists and the works performed will be offered.

Season subscription for the "Meet the Artist Series" are \$12

Individual admission for the program is \$2.50. For further information call 746-1851, ext. 481.

Designed for both sexes...

Newman sponsors divorce classes

The Newman Center of YSU is sponsoring its second class for divorced persons and those planning to be divorced. The ten-week class begins at 10 a.m. each Saturday in the Newman Hall, 26 W. Rayen Avenue, and will continue through November 29.

Sue Roth, a second-year, master's candidate at Case-Western Reserve University, will direct the two-hour classes designed to help both men and women to adjust to being "suddenly single." Sue Roth emphasized socialization and human development of divorced persons. She led similar classes at the Newman Center last summer and at Kent State University, Trumbull Campus.

"When someone is divorced, he or she has many new experiences to cope with and to adjust to and this class is designed

to facilitate some of those adjustments," Mrs. Roth said. "Divorce is an area we have educationally done very little about," she added, "and the process and new roles of the divorced person need to be explored, understood, and

supported." To register or to obtain further information interested persons can call Father Jan Zina at the Newman Center, 747-9202. The classes, which are non-denominational, will be limited to 15 members.

Greeks launch membership rush with 'Get Acquainted' dance

YSU's 14 fraternities and five sororities will launch fall membership rush with an all-campus dance at 9 p.m. Friday, Oct. 3, in Kilcawley Center cafeteria.

The "Let's Get Acquainted" dance is jointly sponsored by inter-fraternity and Panhellenic Councils, in conjunction with YSU's Student Government.

Featured will be the "Great Lakes Band" and "Magnum"

(formerly "Mac Rodent"). The event is free and open to all YSU students with a current ID card.

Formal sorority rush began Sunday, Sept. 28, with "An Orientation to Sorority Life" in Kilcawley Center. Rush sign-up booths, open daily from 10 a.m.-1 p.m., will be located in the Engineering Science building, Beegly Center lobby and Kilcawley Center arcade. Sorority rush parties will begin at 2 p.m.

Dana opens concert season with faculty recital Oct. 6

YSU's Dana School of Music will begin this year's concert season with a faculty recital by

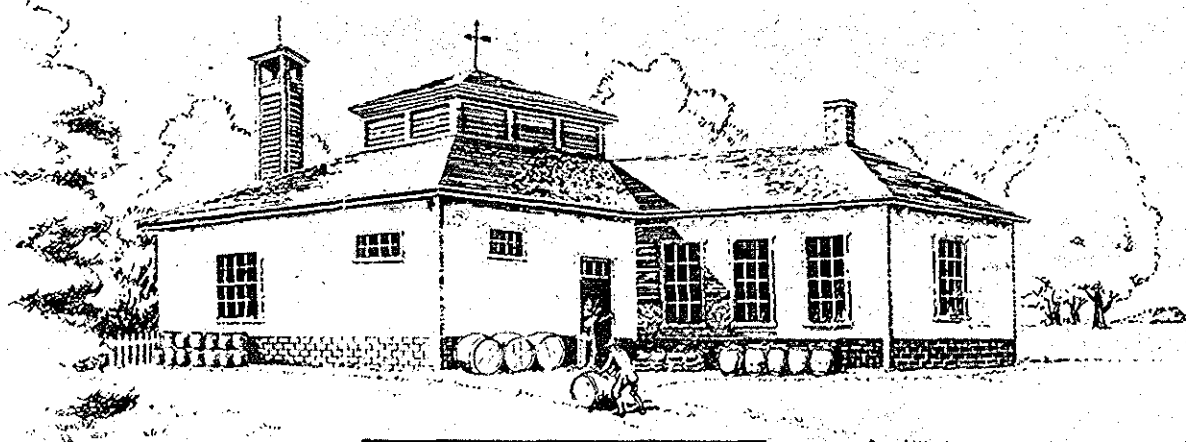
tenor Dr. Wade Raridon and soprano Rosemary Raridon at 8 p.m. Monday, Oct. 6, in Dana Recital Hall.

The program is free and open to the public.

Accompanying will be YSU faculty members Dolored Fitzer on piano and harpsichord, and Robert Fitzer, clarinet.

Featured works will include a chamber duet cantata by baroque composer Agostino Steffani, for which Dr. Raridon prepared the keyboard realization; Schubert's *Der Hirt auf dem Felsen*, Opus 129, for soprano, clarinet and piano; and two arias and a duet from Puccini's opera, *La Boheme*. Music of Purcell, Rachmaninoff, Fourdrain and Britten will also be performed.

For over 130 years we've been using the word "quality" in our advertising. Once again, we'd like to tell you what we mean by it.



Our brewery in 1844.

Blue Ribbon quality means the best tasting beer you can get. A quality achieved only by using the finest ingredients and by adhering to the most rigid of brewing standards.

In Milwaukee, the beer capital of the world, Pabst Blue Ribbon continues to be the overwhelming best seller year after year. Blue Ribbon outsells its nearest competitor nearly five to one. That's why we feel we've earned the right to challenge any beer.

So here's the Pabst challenge: Taste and compare the flavor of Blue Ribbon with the beer you're drinking and learn what Pabst quality in beer is all about. But don't take our word for it. Taste our word for it.

**Pabst. Since 1844.
The quality has always
come through.**



Veterans respond favorably to chance to change bonus

Vietnam era veterans have responded very favorably to the opportunity to change their choice of either a cash or an educational bonus, according to Randall W. Sweeney, director of the Ohio Vietnam Veterans Bonus Commission.

Sweeney said the Commission has received nearly 250 requests for changes since the new policy was announced. Most requests have been from cash bonuses to educational assistance.

"We are very gratified," Sweeney said, "because most of the veterans selected educational assistance. That indicates the decision to amend our policy was worthwhile."

Sweeney also pointed out that the Bonus Commission can approve funding for certain vocational training, which the Veterans Administration will not authorize, such as primary flight training.

"The VA will not pay for private pilot training under the GI Bill," he explained, "but will fund advance flying courses, after a person has a private pilot's license."

Sweeney cautioned veterans that a request for change can be made either, no later than 90

days after a bonus check has been cashed, or before Oct. 21, whichever is later.

Any veterans who have questions about their eligibility, should contact the Commission at (614) 466-7050.

Hardee's

(Cont. from page 1)

Friday.

Hirsch reported that many former Servomation employees were rehired and that Hardee's now employs about 45 students and Broughton about 10.

On-campus managers for the two new food services are Paul Crawford for Hardee's and Dave Richardson for Broughton. Crawford previously ran a Hardee's franchise in Iowa and Richardson managed a food service at a Missouri university.

Adventurers

The Outdoor Adventurers Club meeting will be held at 8 p.m. Wednesday, October 8, in Room 216 of Kilcawley Center.

Golf Tryouts

The Fall Varsity Golf Squad Trials for 1975-76 will be held at Avalon Lakes Golf Course beginning at 11:30 a.m. Tuesday, Sept. 30 and Wednesday, Oct. 1. For further information contact Mr. William B. Carson, golf squad coach, at the physical education department, ext. 344.

CLEVELAND SPORT PARACHUTING CENTER

RD 2 Box 215, Garrettsville, O. 44231
or Call 216-548-4511 for free brochure
1st jump \$45.00
SEE YOUR YELLOW PAGES
group rates available
Open Wed. - Sun. all year.

RESEARCH

Thousands of Topics
Send for your up-to-date, 160-page, mail order catalog. Enclose \$1.00 to cover postage and handling.
RESEARCH ASSISTANCE, INC.
11322 IDAHO AVE., # 206
LOS ANGELES, CALIF. 90025
(213) 477-8474
Our research papers are sold for research purposes only.

The Old German RESTAURANT

FEATURING THE FINEST IN GERMAN AND AMERICAN COOKING

TRY US FOR BREAKFAST, LUNCH, DINNER OR A LATE EVENING SNACK.

Our own *HOMEMADE* soups and desserts

WE CARRY A FULL LINE OF IMPORTED AND DOMESTIC BEERS AND WINES

OPEN 7 A.M. DAILY
50 Madison Avenue
phone 743-0328

YSU'S MAJOR EVENTS PRESENTS

A HOMECOMING CONCERT FEATURING

THE IMMORTAL MUSIC OF BLOOD SWEAT AND TEARS

AND

THE FAR-OUT COMEDY OF CHEECH AND CHONG

PLUS FORMER SPOOKY TOOTH KEYBOARD ARTIST GARY WRIGHT

SUNDAY, OCTOBER 19 AT 7:30PM

AT BEEGHLY CENTER ON THE YSU CAMPUS

TICKETS \$5.00-IN ADVANCE FOR YSU STUDENTS \$6.00 FOR GENERAL PUBLIC OR AT THE DOOR

TICKETS LOCATIONS: BEEGHLY TICKET OFFICE KILCAWLEY CENTER; FRONT DESK, OR THE BURSAR'S OFFICE ON CAMPUS. 363571

OFF CAMPUS TICKET LOCATIONS WHITE WING RECORDS IN NILES, CHESSKING IN THE SOUTHERN PARK, SCORPIO'S IN WARREN AND THE LIBERTY PLAZA AND THE MENAGERIE BOUTIQUE IN THE HICKORY PLAZA

TICKETS ON SALE THURSDAY OCTOBER 2

Lettermen

STAMBAUGH AUD
Fri., October 10-8:00 p.m.
Tickets \$6.00, \$5.00, \$4.00
All seats reserved. On sale
at Stambaugh Box Office
All National Record Marts
BELKIN PRODUCTIONS

Parking situation breeds havoc; most lots filled early in morning

The beginning of a new school year has brought back thousands of old familiar faces, as well as thousands of drivers returning to find that parking will be more frustrating this quarter than it has been in the past.

In order to help drivers avoid some of the frustration in finding a parking space in the morning, *The Jambar* has completed a conclusive survey on the parking situation:

The Parking Deck, from the entrance off Lincoln Avenue, has a parking capacity of 252 cars and is filled by approximately 8 a.m. The entrance to the deck off of Arlington Street is usually closed by 9:30 a.m. when the 1,000 spaces in that section are filled.

Student lot S-6, which holds

1,275 cars, is situated behind Beeghly Center and filled usually between 9:30 and 10 a.m.

The "Mud Lot" which is situated in front of Beeghly and which was supposed to be closed for construction, is open temporarily and holds approximately 1,000 cars. It is almost always filled by 8 a.m.

Student lot S-3, located on Wick Avenue, has 140 spaces and is filled by 7:30 a.m. Students should avoid trying to park at this lot after 8 a.m. since the line of traffic on Wick usually accomplishes nothing more than creating a traffic problem.

Student lots S-1, S-10 and S-11 located on Walnut, are relatively small lots, and students can probably find a space there until 10 a.m. Student lot S-12 is

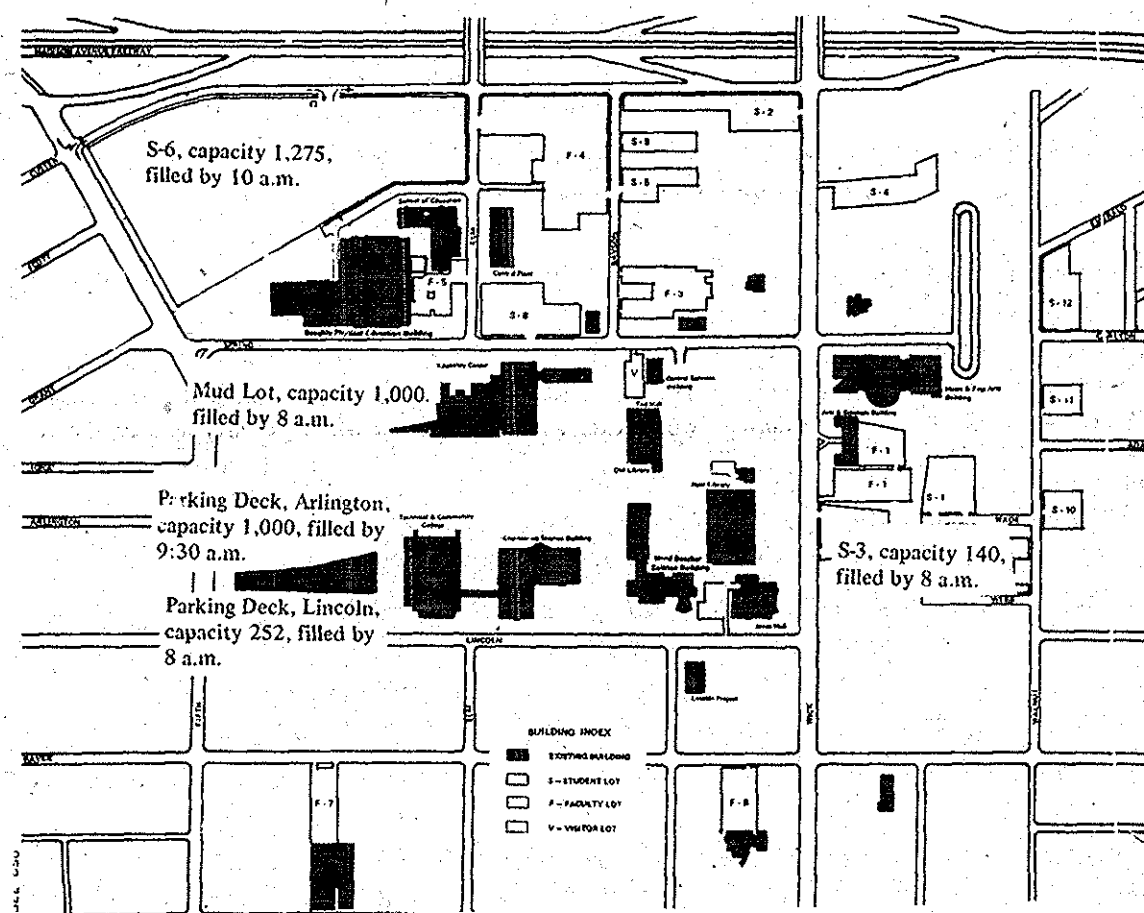
almost completely empty however, because students do not want to walk for five or ten minutes to get to class. Ambitious students looking for a parking space, can try S-12, which almost always has available spaces.

The remainder of the parking lots on campus are small and are filled early in the morning.

Parking lot attendants are asking for the co-operation of the students to help improve the parking situation. Attendants request that drivers park their cars closer together, to show a little courtesy for other drivers, who need a space.

Students also are reminded to shut off their lights in the morning and take their keys with them.

PARKING LOT MAP - 1975-76



Kilcawley Center Program Board Presents

Kink Relief Nite

with
Jack Ross & Woochie Bowls
on Wednesday Nite
9 - 1 A.M.
Kilcawley Pub

Friday Afternoon Happy Hour

with
Rainbow
3 - 6 p.m. in the Pub

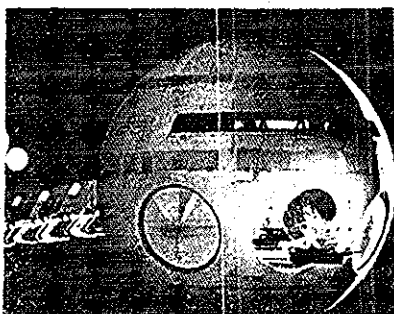
Art Gallery

presents
The Alan Davie Exhibition

Opened until October 2

Film Series 2001

SPACE ODESSEY



Thurs. and Friday

12:00 Noon Rm 236
9:00 P.M. Kil. Cafe

ADM. \$.75 STUDENTS
\$1.00 non-students

Oblio's

MONDAY NIGHT COFFEE HOUSE

with
Arnie Brav
8 - 11 P.M.
Kilcawley Pub

Buildings flood, workers strike, and fees increase during summer

YSU summer students saw both student wages and fees go up while a wall in Tod Hall went down during weekend flooding, and witnessed the start of a core landscaping project which forced rerouting of pedestrian traffic across campus and relocation of the tradition-bound painted rock outside the old cafeteria.

Here follows a chronicle, by month, of events as they happened during the summer of '75:

JUNE

Instructional fees for full-time students who are residents of Ohio went from \$180 to \$190, while tuition for non-resident full-time students was raised from \$190 to \$200 as a result of action by the Board of Trustees at its June meeting. Trustees also approved a \$6 hike in the general

fee for full-time students and a \$5 increase for part-time students. Part-time students, those enrolled for less than 12 quarter hours of credit, received no increase in instructional fee.

The Board also redefined course overload, those credit hours subject to additional instructional fees, as more than 16 hours; course overload had previously been set at hours above 17. Students now must pay \$18 for every credit hour above 16.

Student employee wages were raised to \$2 per hour, effective July 1, with an additional increase to \$2.20 per hour becoming effective January 1, 1976. Limited service faculty members received a wage increase of \$18 per quarter hour. University president Dr. John

Coffelt explained that a record operating budget for 1975-76 might enable the University to create as many as 40 new student positions in the fall.

Penguin defensive end Nazih Banna, four-year veteran, signed a \$17,000 contract with the Charlotte Hornets of the World Football League, joining former YSU assistant coach Jim Vecchiarella, who signed with the Hornets last spring in a coaching capacity. Banna will play linebacker with the Hornets.

At June commencement ceremonies, Distinguished Professor Awards were conferred upon Dr. James Ronda, history and Esotto Pellegrini, music.

JULY

More than 7,000 books and periodicals in the library were
(Cont. on page 9)

Illinois squeaks by YSU 20-19; Penguins face Michigan Saturday

Many coaches believe football is a game of inches, and Saturday's 20-19 YSU loss to Western Illinois helped prove the theory.

The Penguins, now 2-1, came one yard short of victory when they attempted a two-point conversion in the final sixteen seconds. Reserve quarterback Wayne Smith was stopped short of the goal line in the valiant attempt at victory.

This week the Penguins will conclude a three-week road trip, tangling with powerful Northern Michigan (4-0) at Marquette, Mich. The Wildcats, 0-10 last season, have installed the triple-option Veer offense this year and are averaging 351 yards and 33 points per game.

An interesting sidelight to the game is that in each of the past three seasons, the team to score first in YSU-Northern Michigan

rivalry has come out on the short end of the score.

Northern Michigan holds a 4-3 series advantage, while YSU won 24-10 last year in a come-from-behind effort.

"We didn't come this far for a tie," Coach Bill Narduzzi told reporters in his post-game review. "It was an easy decision to go for two points."

Smith, playing in place of (Cont. on page 11)

Update

(Cont. from page 8)

soaked during flooding which resulted from heavy weekend rains, and Central Services in the basement of Tod Hall was submerged in four feet of water, causing an estimated \$20,000 in damages to the building and supplies.

In addition to Central Services and library damages, a double brick-thick wall in Tod Hall collapsed under pressure of the downpour. Water, mud, and several tons of slag from a nearby construction site were dumped into the Tod basement by the rains, necessitating removal by 55-gallon drums and electric pumps.

Almost 5,000 of the damaged books and periodicals were saved from ruin when they were baked in Falcon Foundry core drying ovens, and sprayed with a fungicide to prevent mold and fungus from forming on the damp volumes.

The Lowellville foundry donated its services to the University free of charge.

Because they failed to register with the Student Activities Office by the June deadline date, 21 University clubs and organizations lost recognition and privileges for the 1975-76 year.

Among the groups which did not register on time were the College Republicans, the Campus Ecology Group, Committee Against Student Exploitation (CASE), the Future Secretaries Association, Pershing Rifles and the Student National Education Association.

Members of YSU's Board of Trustees compiled one of the poorest attendance records in the state during 1974-75, according to a report released by the Trustees' secretary, which showed that of 11 Board members, only five—William J. Brown, Dr. Bertie Burrowed, Attorney John M. Newman and chairperson Ann Isroff—had attended all meetings during the past year.

Edward J. DeBartolo, Jr., appointed last August by former Governor John J. Gilligan, had attended only two out of the last six meetings, the report indicated.

A \$55,700 grant from the

National Science Foundation was awarded to the University for use in developing instructional units and curricula in urban planning technology. YSU's Center for Urban Studies will direct the program, which will offer model educational programs for persons planning to enter urban planning service or other related government service.

Hardees Food Systems was awarded the contract for operation of Kilcawley Center snack bar and Broughton Food Services was given the contract for all other food concessions in the Center. Hardees agreed to provide the Center with 10 percent of its gross sales.

Spotlight Theatre presented its only summer production, "Bus Stop," the play by William Inge, during two weekends. The play was directed by Dr. Bill Hulsopple, and featured veteran Spotlight performer Eugene Moretti in the starring role.

Replacing three grid assistants who left the University, Bill Hart, Bruce Herdman and Andy Golubic were named assistant football coaches here for the upcoming season.

AUGUST

Due to a prolonged strike by members of area building trades unions, the Technical and Community College will not be ready for fall use as had been forecast last spring. Additional classroom space in Schwebel Auditorium, the Purnell Room in the library, Room 103 in Lincoln Project, Room 305 in Jones Hall and Room 11 in Rayen Hall will be used until the building can open.

Penguin quarter back Cliff Stoudt and cheerleader captain Linda Falk were married after a three-month courtship, which began when the couple met at a fraternity party in May.

A YSU security guard, William Comm, 41, of Leyton Avenue, died of a heart attack after chasing a vandal across the campus and arresting him. The vandal, Charles Fagan, 25, was later taken to the city jail and held on charges of criminal damage. Comm had been a member of the Boardman Police Department.

In the process of moving the painted rock across campus, layers of paint, two inches thick in some parts, was accidentally

scraped off, prompting Student Government President Bill Brown to remark the rock looked like "a piece of garbage."

The rock was moved from its original position outside the door of the Old Cafeteria to a site about 80 feet south of there, near the new part of Kilcawley Center, as a result of a core landscaping project begun by the University.

Student Activities director Mark Shanley, named last January to the part-time position, was reappointed director of the office after a job search of several applicants, and the position was given full-time status.

The use of concert promoters to bring musical groups to YSU was the recommendation of a report released by Student Affairs Dean, Charles McBriarty, and composed by Student Activities director Mark Shanley, after he and Student Government President Bill Brown conducted a study of six Universities in the area in order to find out their policies and experiences with promoters.

Summarizing their study, Shanley wrote that "...the schools sampled concluded that the use of concert promoters was the best, if not the only way, to continue to obtain performers of sufficient stature and appeal to be able to continue concert entertainment for their students..."

Kilcawley Center Director Phil Hirsch predicted the annual gross from snack bar sales will increase by \$150,000 over last year's total, due, he believes, to takeover by a new food service, Hardee's.

SEPTEMBER

Nearly 800 parents of YSU students attended a special convocation held Sept. 19. Dr. John Coffelt, YSU president gave opening remarks and Dr. Charles McBriarty, dean of student affairs, spoke on programs and services offered at YSU. After a media presentation of summer orientation and panel discussions, the program closed with an informal reception.

Long-time Board of Trustee member and father of a YSU faculty member, Albert Shipka, died after a year's illness. Shipka had been a prominent area labor leader and community servant. He was the father of philosophy professor Dr. Thomas Shipka.

A very special offer for a very special year



Collect them your way

Bicentennial Glasses

A bright, beautiful Collector's Series you'll use with pride. Get one glass per visit at our special low price when you make ANY food or drink purchase at participating Burger King® restaurants.



A different Bicentennial design will be available every 2 weeks. There are 4 in all and you may collect as many of each as you wish. Start your set now!

KILCAWLEY CENTER FALL WORKSHOPS

We would like to thank the instructors who taught our workshops Spring Quarter, 1975. We had such a good response that we are offering them again Fall Quarter.

These are some of the workshops we would like to offer, but we need instructors.

GOURMET COOKING

DOG CARE
 BASIC CROCHETING
 BIKEOLOGY
 MACRAME
 KARATE
 FIRST AID
 SEWING
 SURVIVAL COURSES
 WINE MAKING
 CHINESE COOKING
 SLIMNASTICS
 DRAMATIC EXPRESSION
 BATIKING
 AUTO MECHANICS
 BARTENDING
 AQUARIUM SCIENCE
 YOGA
 DASHIKI DESIGN
 HOLIDAY CARD DESIGN
 MODELING
 SILK SCREEN
 FIELD NATURAL HISTORY
 BRIDGE
 STEREO MAINTAINANCE & REPAIR
 ASTROLOGY
 THEATRE MAKEUP
 REFINISHING FURNITURE
 CARPENTRY
 WELDING
 FASHION COORDINATING
 COSMETOLOGY
 PHOTOGRAPHY
 GUITAR LESSONS
 MEDITATION

CAKE DECORATING

BASKET WEAVING
 WOOD CARVING
 DECOPAGE
 NATURE CRAFTS
 NEEDLEPOINTS
 CREWEL WORK
 KNITTING
 HAIR STYLING
 TOLE
 ETCHING
 WOOD BURNING
 PRINTMAKING
 PLANTS(INDOORS)
 GARDENING (OUTDOORS)
 EMBROIDERY
 JUDO
 ELECTRONICS
 STUDY HABITS
 CANDLE MAKING
 HOME ECONOMICS FOR MEN
 BARBERING
 REPELLING
 TYPING
 HEALTH FOODS
 HOW TO BUDGET
 HOW TO DO YOUR INCOME
 TAX RETURN
 QUILT MAKING
 FLORAL ARRANGEMENTS
 REUPHOLSTERING
 DIETING
 GLASS WORKING

Would you like to share your knowledge? If you are capable of teaching any of these workshops or any others that haven't been mentioned, please come to Kilcawley Center Staff Offices and ask for Michele Mousseau.

Deadline: October 3, 1975

After we have the instructors for the Workshops we will advertise the course titles and times to be offered. Registration for students will run from October 6-October 10, and classes will run from October 13-December 5.

Football

(Cont. from page 9)

quarterback Cliff Stoudt when the latter left the game with a broken nose and slight separation of the left shoulder, narrowed the score at 20-19 with sixteen seconds left on a 10-yard pass to fullback Dave Garden.

Smith's play was outstanding as he directed the number one offense to a pair of Garden touchdowns and a 20-yard field goal by frosh Paul Branchetti.

Statistically, Smith ran for 47 yards in 14 carries, including a 29-yard scamper to set up the final TD, and completed three of nine passes for 29 yards and a touchdown.

By vote of the media, Garden was chosen as YSU's top offensive player. He topped all rushers with 97 yards in 18 carries, including a two-yard scoring run.

A total of five Penguin runners gained at least 40 yards as senior Andy Kuchmaner totaled 74 yards in 13 carries, Stoudt made 56 yards in eight tries, Smith had 47 in 14 trips, and tailback John Kinch lugged the ball 41 yards in eight attempts.

Narduzzi said Sunday that offside penalties against the offense and poor first-half tackling by the defense hurt the Penguins. Both first-half Western Illinois scores came on broken tackles, as receiver Mike Holloway broke three arm tackles enroute to a 34-yard scoring reverse and tight end Scott Levenhagen scooted 71 yards with a pass after bouncing off a tackler.

YSU led 3-0 early in the first period on a 38-yard Branchetti field goal. Western went on top 14-3, before Garden's two-yard run near halftime, cut the gap to 14-10.

Branchetti's second field goal narrowed the margin to 14-13, but Western Illinois quarterback Paul Bowens put his team up 20-13 with a 21-yard pass to Levenhagen.

9 students named as cheerleaders

A total of nine cheerleaders, including four returnees, have been named for the 1975-76 sports year at YSU.

Joe Bodnar, junior, T&CC, heads the group as captain, having been a cheerleader for the past two seasons.

Other returnees include: Linda Stoudt, sophomore; Valerie McDuffie, sophomore; and Harry Dripps, junior.

Frosh were once again eligible for cheerleading tryouts last spring, and five incoming students were named to the squad.

The quintet includes: Sue Bruce, Janet Kolesar and Aileen Traikoff, Chris Parise, and Marty Reschner.

The group will cheer primarily for the varsity football and basketball squads.

Ticket sales are high
Football season ticket sales reached an all-time high of 1,606, campaign chairperson Frank Valicenti reported at Thursday's

THE BOAR'S HEAD
LUNCHEON CLUB
OCTOBER 8
and every Wednesday
11:30-1:30
BUFFET of CULINARY EXCELLENCE
CANDLE LIGHT and ENTERTAINMENT
ST. JOHN'S CHURCH GOTHIC DINING ROOM
\$1.50
students with YSU I.D.'s \$1.25
RESERVATIONS WILL BE APPRECIATED
743-3175

\$33,500,000
UNCLAIMED SCHOLARSHIPS
Over \$33,500,000 unclaimed scholarships, grants, aids, and fellowships ranging from \$50 to \$10,000. Current list of these sources researched and compiled as of September 5, 1975.
UNCLAIMED SCHOLARSHIPS
369 Allen Avenue, Portland, Maine 04103
 I am enclosing \$12.95 plus \$1.00 for postage and handling. (Check or money order — no cash, please.)
If you wish to use your charge card, please fill out appropriate boxes below:
 Master Charge **AMERICAN EXPRESS**
Expiration Date _____
Month/Year _____
Master Charge Interbank No. _____
Credit Card No. _____
Name _____
Address _____
City _____ State _____ Zip _____
Maine residents please add 5% sales tax.
PLEASE RUSH YOUR CURRENT LIST OF UNCLAIMED SCHOLARSHIPS SOURCES TO:

Army ROTC
gives you 2 years to
make up your mind.

Signing up for the Basic Course of Army ROTC is like most other college courses. You make no major commitment; there is no special obligation. You can ace it or flunk it. Or, you can drop it. That depends upon you.

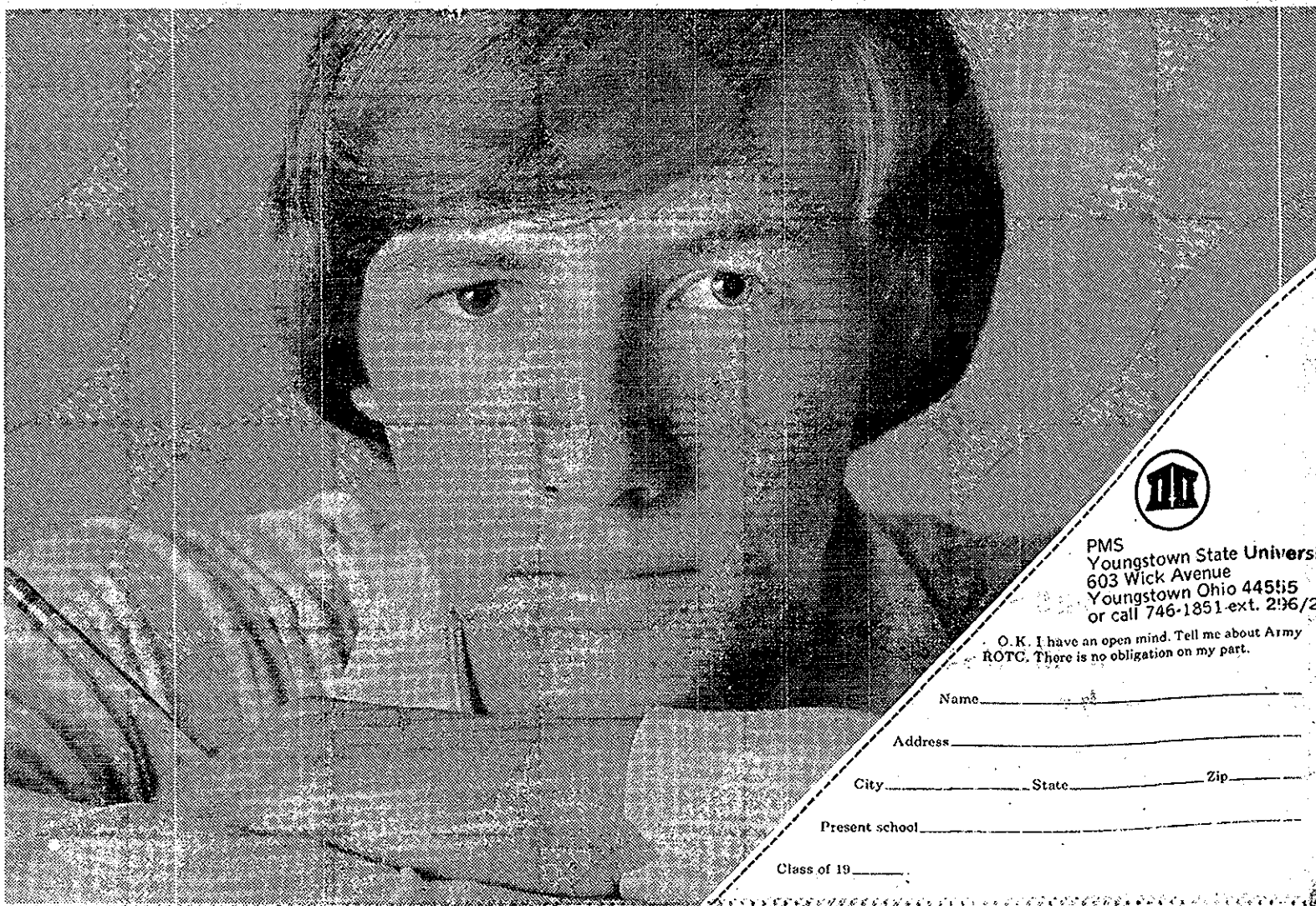
Try the Basic Course during your freshman and sophomore years. See what it's all about. It only takes a few hours a week.

By the end of your sophomore year, you'll know if it's for you. After all, nobody can really tell you about Army ROTC. You have to find out for yourself.

You'll then be eligible for the Advanced Course. This pays you \$100 a month for the last 2 years of school. You'll earn a commission at the same time you earn your degree. The leadership and management skills you acquire will put you ahead in either civilian or military careers.

The point is this: You'll never know what Army ROTC can do for you until you give it a fair trial. It's at least worth checking into. Fair enough?

Army ROTC. Learn what it takes to lead.



PMS
Youngstown State University
603 Wick Avenue
Youngstown Ohio 44515
or call 746-1851 ext. 296/29

O.K. I have an open mind. Tell me about Army ROTC. There is no obligation on my part.

Name _____

Address _____

City _____ State _____ Zip _____

Present school _____

Class of 19 _____

T&CC

(Cont. from page 1)
 other storage areas on campus.
 T&CC Building facilities when completed will house the offices of: business education & secretarial studies, business technology, continuing education, criminal justice, engineering technology, nursing, special studies, home economics, paramedical sciences, geography and math. The building will also contain a media center and a

television broadcasting station. It will have 54 classrooms.

This is the second time in the last 12 months that a YSU building under construction has been delayed because of extra repairs needed in the building process. In fall quarter 1974, construction on the music and fine arts building, Bliss Hall, was temporarily halted because of "structural problems."

Delay of T&CC opening made it necessary for new class bulletins to be issued because of the numerous class changes to

other buildings. Classes that were initially scheduled in T&CC will either be held in the same classrooms as they were last fall or in one of the additional spaces designated for classroom use.

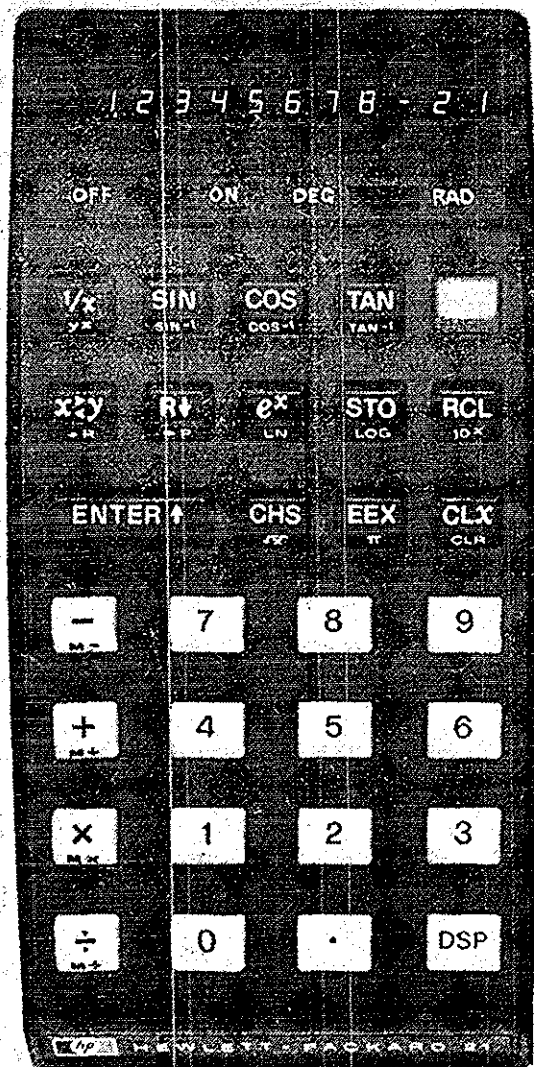
HELP WANTED
HARDEE'S SNACK BAR
KILCAWLEY CENTER
 Need students able to work 3 to 4 hours daily Monday thru Friday, between the hours of 7:00 a.m. and 3:00 p.m. Apply at snack bar.

**YOU TRIED THE REST,
 NOW TRY THE BEST!**
**KAPPA SIGMA
 RUSH PARTY**

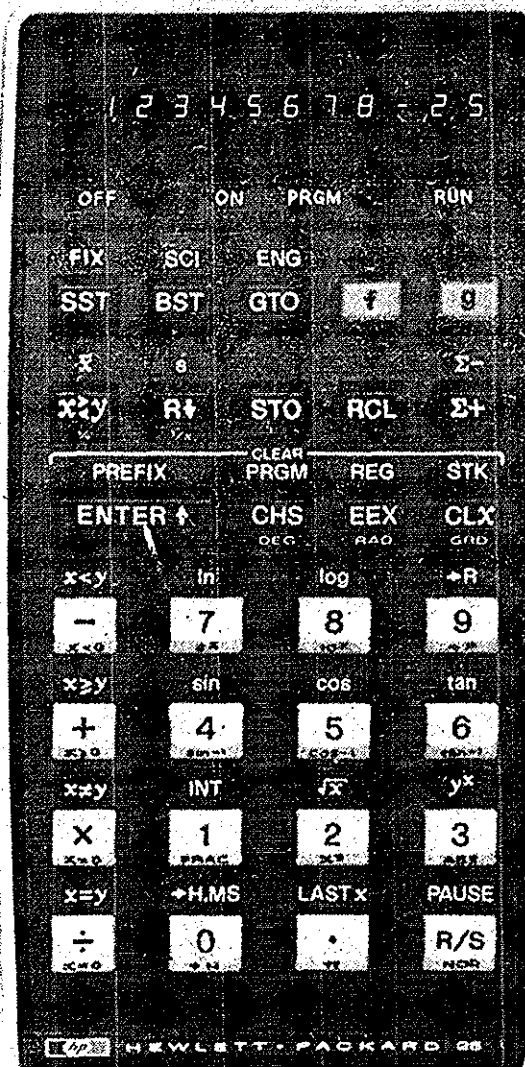
WED
OCT. 1 9:30 p.m.
1436 ELM STREET
FOR RIDE 746-8220

B
E
E
R
G
I
R
L
S
F
O
O
D

The uncompromising ones.



**The Hewlett-Packard
 HP-21 Scientific
 \$125.00***



**The Hewlett-Packard
 HP-25 Scientific Programmable
 \$195.00***

The calculations you face require no less.

Today, even so-called "non-technical" courses (psych, soc, bus ad, to name 3) require a variety of technical calculations—complicated calculations that become a whole lot easier when you have a powerful pocket calculator.

Not surprisingly, there are quite a few such calculators around, but ours stand apart, and ahead. We started it all when we introduced the world's first scientific pocket calculator back in 1972, and we've shown the way ever since.

The calculators you see here are our newest, the first of our second generation. Both offer you technology you probably won't find in competitive calculators for some time to come, if ever.

Our HP-21 performs all arithmetic, log and trig calculations, including rectangular/polar conversions and common antilog evaluations.

Its display is fully formatted, so you can choose between fixed decimal and scientific notation.

Our HP-25 does all that—and much, much more. It's programmable, which means it can solve automatically the countless repetitive problems every science and engineering student faces.

With an HP-25, you enter the keystrokes necessary to solve the problem only once. Thereafter, you just enter the variables and press the Run/Stop key for an almost instant answer accurate to 10 digits.

Before you invest in a lesser machine, by all means do two things: ask your instructors about the calculations their courses require; and see for yourself how effortlessly our calculators handle them.

Both the HP-21 and HP-25 are almost certainly on display at your bookstore. If not, call us, toll-free, at 800-538-7922 (in Calif. 800-662-9862) for the name of an HP dealer near you.

HEWLETT *hp* PACKARD

Sales and service from 172 offices in 65 countries.
 Dept. 6588, 19310 Pruneridge Avenue, Cupertino, CA 95014

615/78
 *Suggested retail price, excluding applicable state and local taxes—Continental U.S., Alaska & Hawaii.