

Numerous campus construction projects now underway

by Yvonne Stephan

The sight of construction workers and equipment has become quite familiar at YSU this summer as work continues on numerous campus construction projects.

The health, physical education and all-sports complex is expected to be completed in the fall of 1980, said Edmund Salata, dean of administrative affairs.

Major earthwork on the complex was completed in the fall of 1978. The foundation and underground utility work which began in the spring took longer than expected because of an iron workers' and plumbers' strike. Still, Salata hopes completion will be in late August.

Bids will be taken July 10 on the balance of the work. This will include the stadium building, syn-

thetic turf playing field, eight-lane, all-weather track and 10 regulation tennis courts, Salata explained.

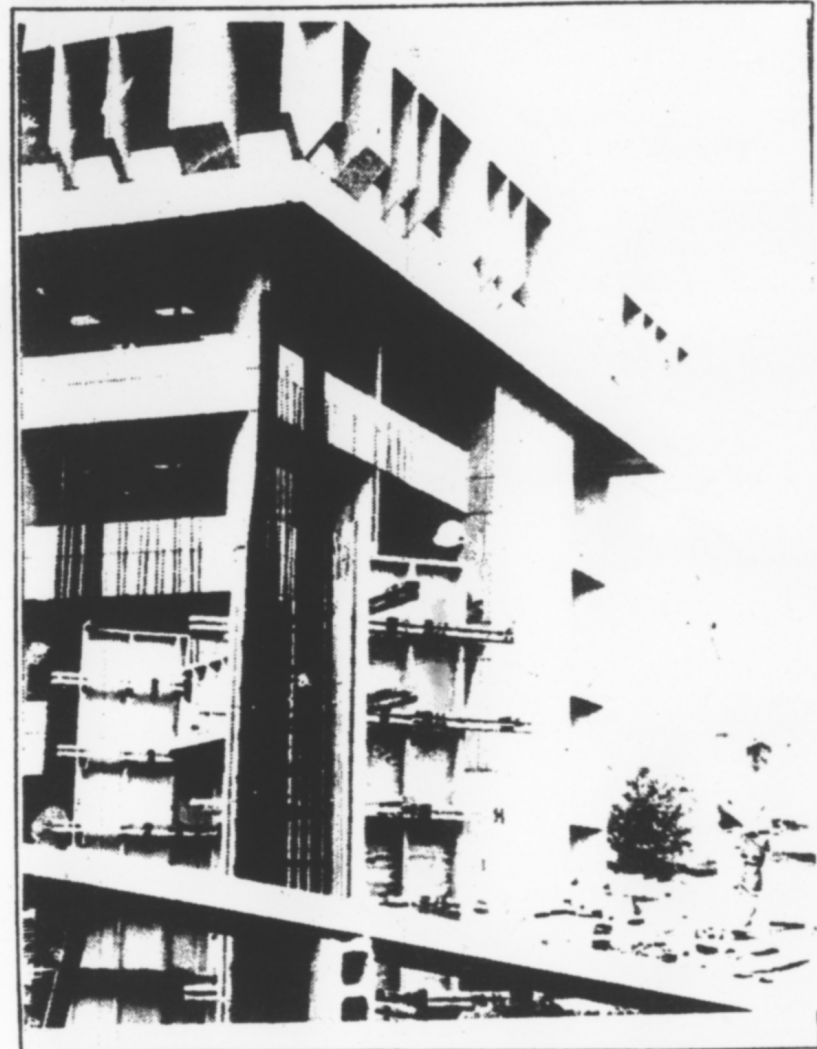
Although the actual, final cost of the all-sports complex is not definite, Salata reported that the community raised \$3 million for the stadium and all-weather synthetic field. The remaining funds will come from the state and YSU.

The Wick Avenue pedestrian bridge was to be completed in September, but truckers' and iron workers' strikes have delayed completion until November. The funds used in the project are from both YSU and the state.

The chemical storage building on the southwest corner of Ward Beecher will safely store chemicals and is due to be completed in late fall. Funding will come directly from the state, said Salata.

Traffic controls, sound sensing devices for security reasons, and landscaping will be completed in September to add the finishing touch to the 2,150-space parking deck on Wick Avenue, Salata added.

On campus, the vapor lights
(Cont. on pg. 4)



CONSTRUCTION ON THE pedestrian bridge between Maag library and the Wick Ave. deck is progressing quickly. (Photo by Chris Pruitt)

Construction

(Cont. from pg. 1)

were converted to high pressure sodium which gives sixty per cent more light and consumes less power by about \$2 a unit per day.

Later this summer, 80 to 100 light fixtures will be added to light up the dark areas on campus. In addition, accent lighting will be put around the trees to not

only improve lighting but allow the landscape to be enjoyed at night.

YSU is improving the underground wiring and control systems to make the lighting "more dependable and reliable" so there will be less circuit failure, Salata reported. Completion will be in the fall.

Additional fixtures, accent

lighting and underground wiring will cost about \$140,000, which will be funded by YSU fees, reported Salata.

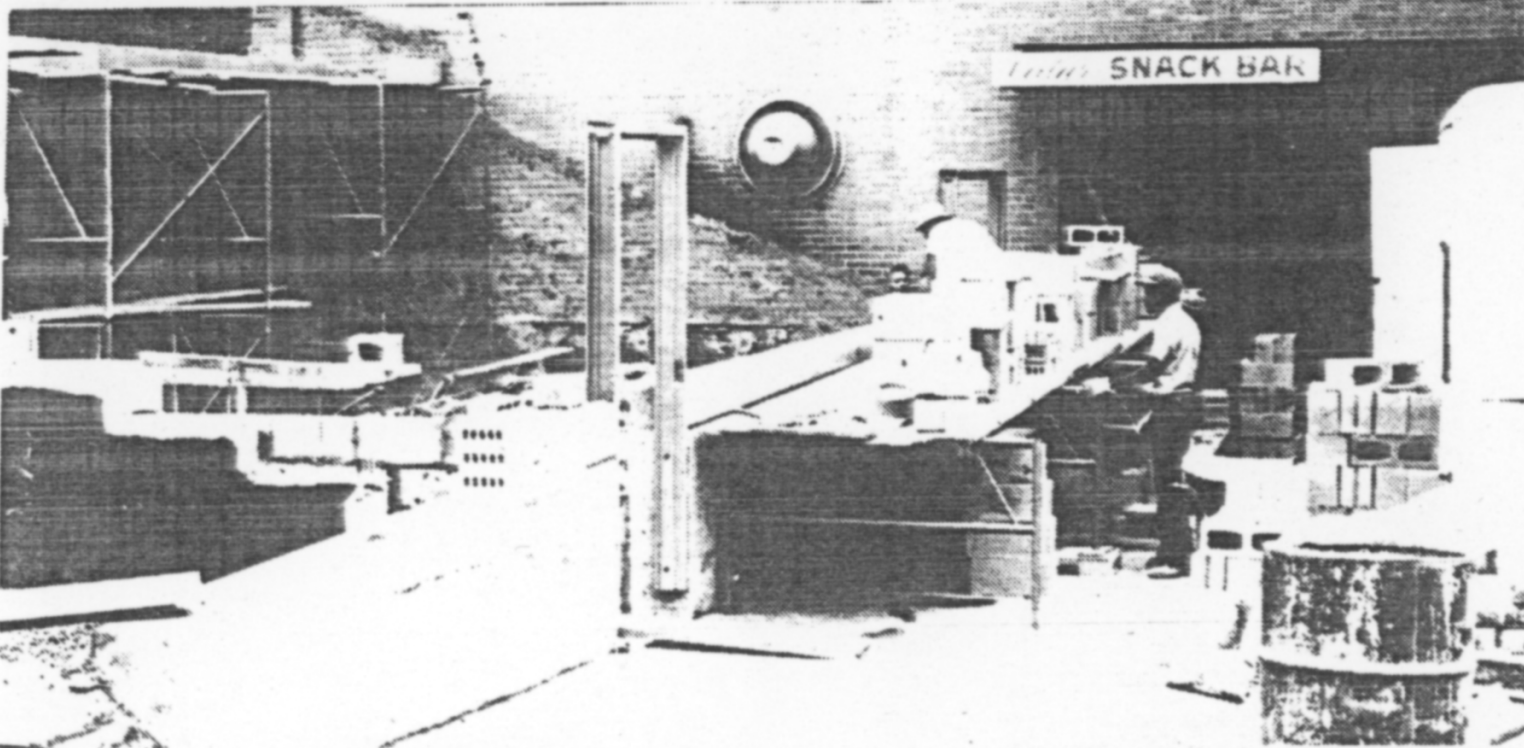
- Fire damaged Rayen Hall is being restored by the Rayen Trustees. When the building, which is leased by YSU, is restored, YSU and the Rayen Trustees will mutually cancel the lease which was to run through

the year 2015. According to Salata, YSU no longer needs Rayen Hall and the Board of Education is considering using the building.

The *Jambar* office which is now in Rayen Hall will move to Kilcawley Center the first part of September, said Salata.

Improvements and removal of architectural barriers to allow the handicapped better access to the buildings include constructing ramps; lowering elevator buttons and drinking fountains; and improving toilet facilities. Funding will come from the state.

The third phase of Kilcawley is being planned, including an additional 40,000 square feet for service facilities and quiet areas. The construction, which will begin sometime in 1982, is to be funded by student fees.



ADJACENT TO WARD BEECHER, a chemical storage building is being constructed on the Lincoln Avenue side. (Photo by Chris Pruitt)