

Campus Security relocates to Spring Street

By VICTORIA FIGUEROA
Jambar Staff Writer

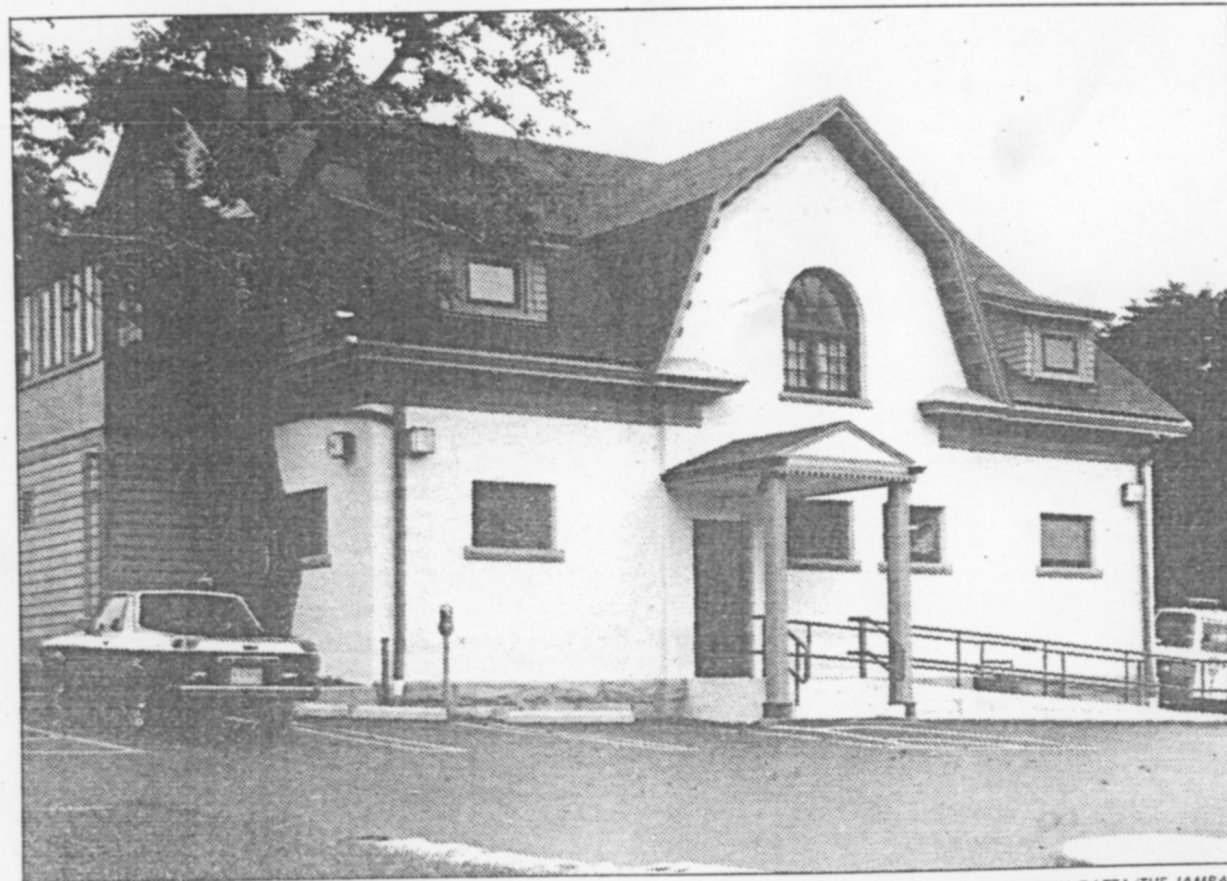
Have you been looking for Campus Security and have been unable to find it?

Perhaps it is because the security department has a new home on campus which is located at the east end of Spring St., behind the Alumni Association office.

Sgt. Jim Grey, campus security, said that arrangements for the actual relocation of the security office began about three-and-a-half years ago. He said the department saw an immediate need to move, and after an evaluation, there were three main details to be taken care of.

First, formal plans had to be set. Then, the approval of administration was needed, and last, bids from building contractors were sought for the renovation of the building. "Dr. Humphrey was very instrumental in the planning, and in the securing of any matter concerned with security," said Grey.

When the security office was located in Kilcawley Center, it was only part of a big building. Kilcawley also houses several offices, and due to this, lack of privacy, inadequate room space and inappropriate facilities were just a few of the inconveniences that faced the security department, said Grey.



JOHN GATTA/THE JAMBAR

The newly remodeled Campus Security Office is an informal and relaxed atmosphere for all of your security needs. All students are encouraged to stop in and become familiar with their facilities. The Campus Security Office can be reached by dialing 742-3527.

"Now, we are in a place we can identify with as the home of the YSU Security and we can better the YSU community as a whole," he said.

Security is often viewed by the University community as the "villians" and according to Grey, this is a big

misunderstanding. "The only occurrences of ours that seem to surface are apprehensions, which leave the good deeds unvoiced," he said.

For example, Grey said that students are notorious for losing things. This includes anything from a student I.D. to

a motor vehicle. Security has been successful in recovering most of what is lost, he said.

Security also handles many other functions on campus such as traffic control, student activities, games and wherever security deficiencies may be.

"Security is an operation which is on-going 24 hours daily, seven days weekly; we never close," he said.

Security is also in a constant learning process, said Grey. Currently, 18 officers from the security office are enrolled in a special Homicide Seminar offered by Continuing Education department, and three officers just attended a crime prevention study.

A special officer is designated to act as the special crime prevention officer and will be able to give tips to groups about crime prevention on campus and off, said Grey.

Four person just returned from the Kidde Corporation in Westlake, Ohio to learn about a "card-entry" system that the University plans to implement beginning Jan. 1, 1986. In order to enter certain buildings on campus, a person will need a special electronically sensed "card" to do so. The person will insert the card into a slot, and he or she will be able to enter.

Meanwhile, the time, building and point of entry, will appear on a computer printout sheet in the security radio room. Grey said that the radio room here on Campus is one of the most advanced in the county area.

The buildings which are targeted for the first of the year include Stambaugh sports facilities-rec 5, Kilcawley Dorm and Meshel Hall. The system will be installed into other buildings as the need arises, said Grey.

Currently, Campus Security has 27 full-time and 45 part-time sworn officers in their department.

"We are always looking for ways to make the campus safer for faculty, students and staff," said Grey.

"We want students to feel free to stop by our new facilities so that they can build a certain familiarity with one another. We know that if they do, they will become more comfortable coming to us when a situation may arise when they may need us."

For more information about Campus Security, call 742-3527. The emergency number on campus is ext. 3333. This number should be strictly utilized for emergencies only.