

The Nineteen Hundred Forty-six

Year

published by the

SENIOR CLASS

of

YOUNGSTOWN COLLEGE

Judith Megala—Editor

Daniel Rich—Business Manager

*This Neon is dedicated to
our boys and girls who are
"Back Home for Keeps."*



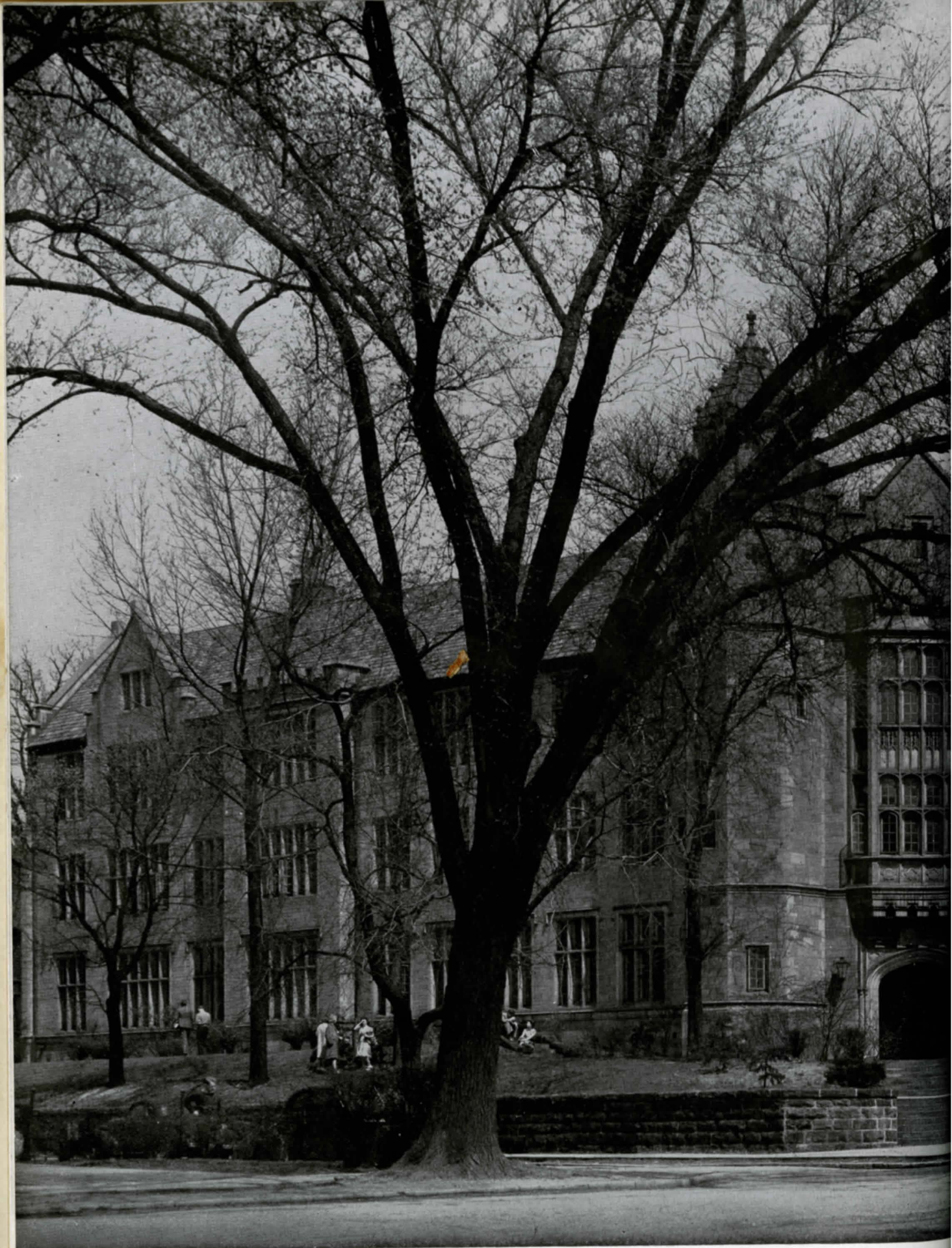
*Through
these
portals*



*Under a
blanket of
snow*

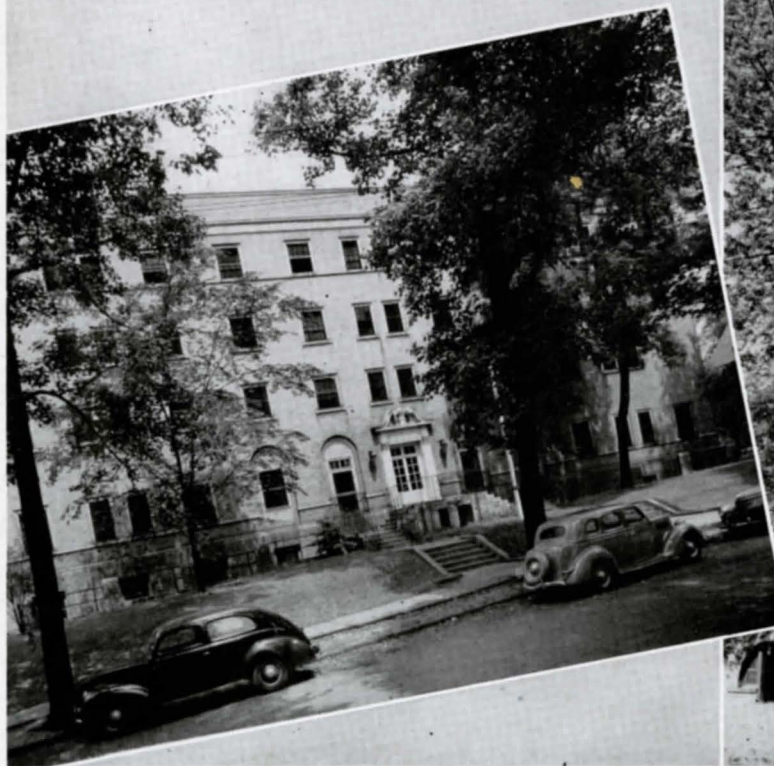
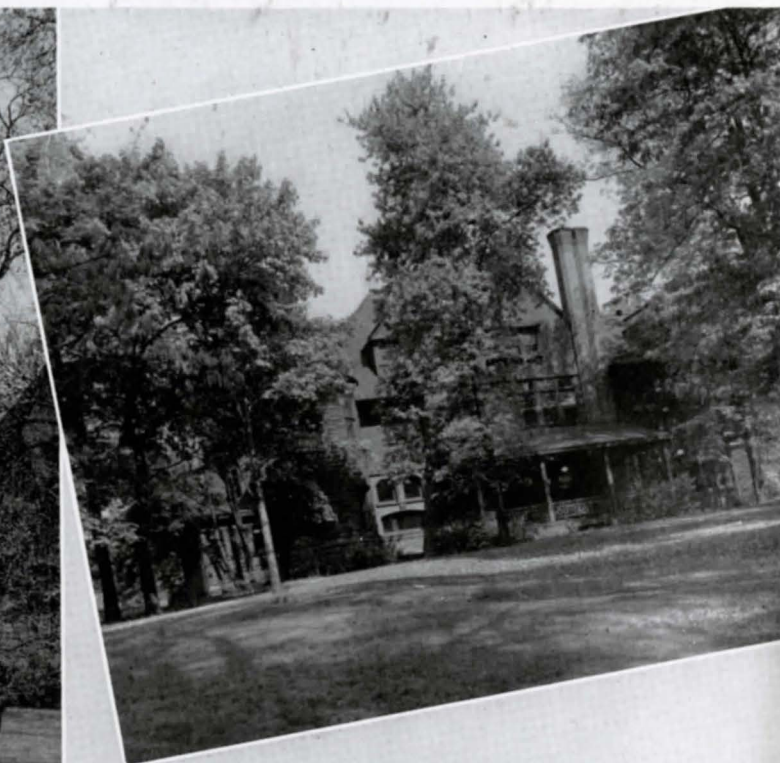


William Rayen School of Engineering of Youngstown College



Our Alma Mater





DANA MUSIC INSTITUTE
BUECHNER HALL

BUSINESS SCHOOL
OLD ENGINEERING SCHOOL



The North Campus



Administration





DR. HOWARD W. JONES
President of Youngstown College

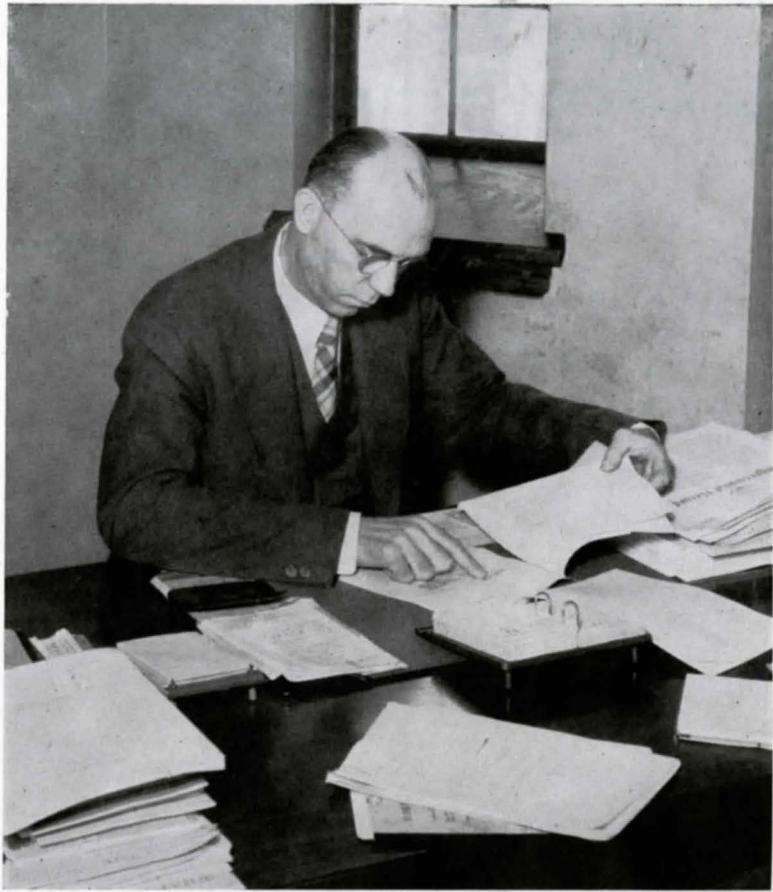
President's Message

It is only fitting that the 1946 Neon is gratefully dedicated to you men and women who have returned to Youngstown College from years in the services.

You have come to us enriched with the experience of having met successfully situations which were difficult and demanding beyond measure. The wisdom you will find in college is of another sort. I believe that you, in the deeper understanding gained from your war years, already expect to find here values beyond simple preparation for your chosen careers, standards of integrity on which to base the new structure of personal and national and international life which you must build.

I can think of no better wish for your college years than that you will learn to know and appreciate these high standards.

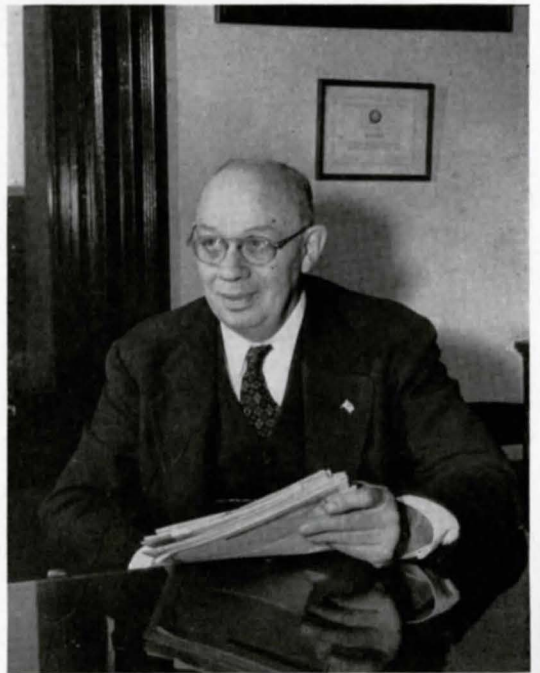
Deans



DR. GEORGE M. WILCOX, Dean of the College



DR. JOSEPH E. SMITH, Dean of Men



DR. LOUIS A. DEESZ, Dean of the School of Engineering

Heads of College Divisions



JOHN ALLISON, A. B.
Dean of School of Business Administration



ARNOLD HOFFMAN, A. M.
Dean of Dana School of Music



RAYMOND FALLS, LL. B.
Dean of Law School

Faculty



2nd Row—Henry V. Stearns, P. P. Buchanan, Clarence P. Gould, Karl W. Dykema, W. L. Webster,
P. C. Pickard, G. M. Wilcox.
1st Row—Virginia Fahringer, Betty Lippy, Mary B. Smith, Venita Davies, Helen W. Lyon, Anne
Monohan, Freda Flint, Marguerite Friedrich, Elizabeth B. Morgan



Back Row—C. Huey, O. L. Reid, William H. Taft, Joseph E. Smith, Paul C. Luginbill
Front Row—Clair Worley, Inga Worley, Catherine Bridgham, Ina Van Noppen, Fay Litvin, Laurys Fee,
Stella Cassano, Leonard T. Richardson

Music School Faculty



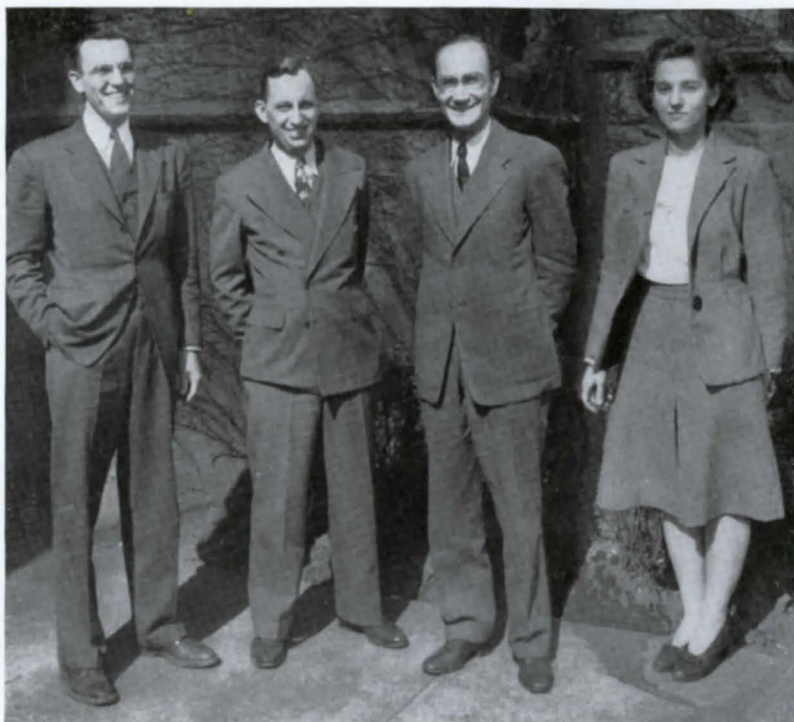
Left to right—Hollander, Dehnbostel, Dehnbostel, Cook, Schmitt

Business School Faculty



Mr. Williams, Mrs. Emery, Mrs. Hanna, Mrs. Gettman, Miss Otterman, Miss Jenkins, Mrs. Pilz

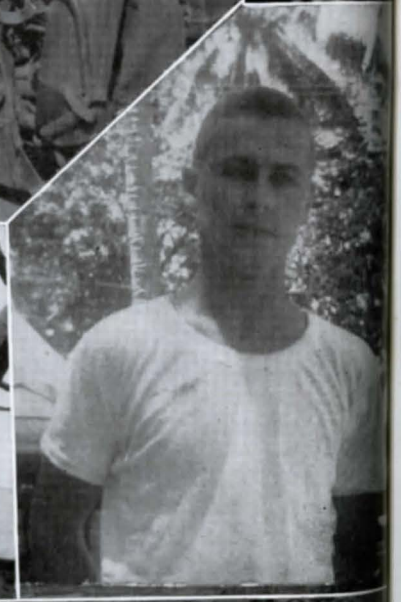
Engineering School Faculty



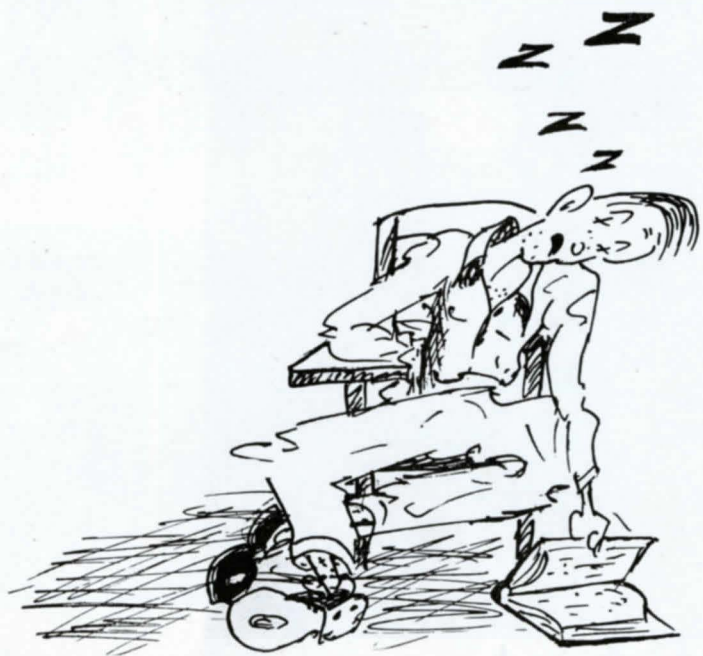
Koran, Oyen, Ellis, Potor

Officers of Administration

Howard W. Jones, A. M., D. Ped. President
John F. Allison, M.B.A. Director, Division of Business Administration
Ivis Boyer, A. B. Secretary to President
Maurine Brunner, A. M. Librarian
Philip P. Buchanan, M. Ed. Registrar
Stella Cassano, A. M. Secretary to Dean of the College
Lillian Cole Auditor
R. D. Craig Registrar of the Business School
Louis A. Deesz, E. E. Dean, William Rayen School of Engineering
Karl W. Dykema, A. M. Director, Division of Languages and Literature
Raymond L. Falls, LL. B. Director, School of Law
Freda R. Flint, A. B. Director of Public Relations
Marguerite Friedrich, A. B. Association Director of Public Relations
Arnold E. Hoffman, A. M. Director, The Dana Musical Institute
Margaret J. Humelbaugh, B. S. Associate Librarian
Elizabeth Morrison Land, B. P. S. M. Psychometrist
Betty Lipply Assistant to Business Manager
Helen Walker Lyon Cashier
P. Calvin Pickard, A. B. Business Manager
O. L. Reid, A. M. Director, Division of Social Sciences
Joseph Earl Smith, Ph. D. Dean of Students
Mary Boyer Smith, A. B. Ass'stant Registrar
Virginia Thomas Secretary to Registrar
Willard L. Webster Director of Athletics
George M. Wilcox, Ph. D. Dean of the College
J. B. Williams Director, Business School



Classes



Senior Class

Our last year in college. Attending college activities. Getting the Neon to press. May Day. May formal at Stambaugh's. June, editor of Jambar. Judy, Neon chief. Lois McCallister, awarded a scholarship to Western Reserve. Marge Thomas, Neon associate editor. Only class boasting three Jambar editors. Looking forward to careers. Pictures at Kenneth Klein's. Marcia, a member of the faculty. Memberships in Who's Who and Delta Epsilon. Host of senior functions. Responsibilities. Graduation!



Front Row—Gilbert, Thomas, Megala
Back Row—Mrs. Smith, Patrick

OFFICERS

President Judith Megala
Vice-President Marjorie Thomas
Secretary Elizabeth Patrick
Treasurer Mary Bell Gilbert
Advisor Mrs. Joseph Smith

ANTHONY S. AIELLO

**B. S. in Education
Education**

Football
Varsity Y Club



IRENE SIRBU AURILIO

**B. S. in Education
Elementary Education**

**FLORENCE MARIE
BAILEY**

**B. S. in Education
Elementary Education**

Elementary Teachers'
Professional Club
Excelsior-Secretary
Epsilon Theta Gamma



ADELE ELIZABETH BAIRD

**Bachelor of Arts
Mathematics**

International Relations Club
Religion in Life, Vice-president,
Secretary
Chapel Choir
Chorus
Alpha Theta Delta

**HELEN MARINELLI
BARILLAIRE**

**B. S. in Education
Elementary Education**



BEVERLY ANN BENJAMIN

**B. S. in Education
Elementary Education**

Religion in Life
Elementary Teachers'
Professional Club
Sophomore Class Vice-president
Junior Prom Queen
Snowflake Frolic Attendant
Gamma Sigma, Treasurer

**RUTH CHARLOTTE
BERGER**

**B. S. in Education
Elementary Education**

Religion in Life
Elementary Teachers'
Professional Club
Chorus
Gamma Sigma



**VIRGINIA LOUISE
BLACKMAN**

**Bachelor of Arts
Social Science**

International Relations Club
Religion in Life; Who's Who
W. A. A., Sec., Pres.
Young Women's Group Social,
President
Student Council, Treasurer
Jambar, Society Editor, Assistant
Circulation Manager
Pan-Hellenic Council
Chairman of Freshman Breakfast
Alpha Theta Delta, Vice-president

GEORGE C. W. BOWLES

Bachelor of Arts
English
Religion in Life



BETTY JO BOYTS

Bachelor of Arts
Art
Art Club
Women's Athletic Association
Young Women's Group Social

CHESTER L. BRISLEY

Bachelor of Science
Industrial Engineering



ROBERT FRANCIS BURKE

Bachelor of Arts
Art
Art Club, Executive Committee
Newman Club
Student Council
Neon, Art Editor
Turkey Hop, Co-Chairman
Sigma Tau Delta
Who's Who
Alpha Psi Omega, Pres., V. P.
Kappa Sigma Kappa, Secretary

WEALTHIE D. BUSH

B. S. in Education
Music Education
Religion in Life
Dana Music Forum
Chorus
Chapel Choir
Sigma Alpha Iota



JAMES P. COYLE

Bachelor of Arts
Social Science
Newman Club
Gessner Law Club

IRMA DIAMONDSTEIN

B. S. in Education
Elementary Education
Elementary Teachers'
Professional Club
Mimes
Speech Society
Neon
Chorus
Alpha Psi Omega
Phi Lambda Delta



**HOWARD GLENN
EDSALL**

B. S. in Education
Religion in Life, Sec., V. Pres.
Speech Society
Hi-Ed's
Student Council, Secretary
Jambar
Neon
Freshman Class President
Junior Class President
Pan-Hellenic Council
Snowflake Frolic, Chairman
Junior Prom, Chairman
Who's Who
Polio Drive, Chairman
Phi Sigma Epsilon

DOROTHY MARIE GARD

B. S. in Education
Music Education

Women's Athletic Association
Young Women's Group Social
Dana Music Forum, President
Neon, Staff
Chorus
Chapel Choir
Band
Orchestra
Sigma Alpha Iota
Delta Epsilon
Who's Who



MARY BELL GILBERT

B. S. in Education
Elementary Education

International Relations Club
Religion in Life
Elementary Teachers'
Professional Club,
Treasurer, Vice
President, President
Women's Athletic Association
Jambar, Staff
Neon, Senior Co-Editor
Women's Choir
Senior Treasurer



EVELYN JUNE GRIMSLEY

B. S. in Education
Elementary Education

Religion in Life; Art Club
Elementary Teachers, Sec.
Student Council, W.A.A.
Jambar, Editor, Assistant Editor
Neon, Photography, Art, Editor
Chapel Choir
Junior Class Treasurer
Pan-Hellenic Council
Junior Prom Attendant
Sigma Tau Delta
Alpha Theta Delta, Pres., Sec.
Y. C. Pin; Who's Who
May Queen; Delta Epsilon



CHRISTIAN G. LUCAS

Bachelor of Science
Industrial Engineering



WILMA ROSE GESSLER

B. S. in Education
Biology

Newman Club
Omicron Lambda
Gamma Sigma, Treasurer



JEANNE MARIE GILLESPIE

Bachelor of Arts
Languages

Newman Club



ROBERT ARTHUR HANSEN

Bachelor of Arts
Social Science

Art Club, Treasurer
Student Council, Treasurer
Phi Epsilon, Treasurer



HELENE MARIE LUKICH

B. S. in Education
Music Education

Religion in Life
Women's Athletic Association
Mimes
Speech Society
Dana Music Forum
Hi-Eds
Debate Club
Chorus
Chapel Choir
Band, Majorette
Alpha Theta Delta, Sec.
May Prom Attendant
Neon



LOIS JEAN McCALLISTER

**Bachelor of Arts
Social Science**

International Relations Club
Religion in Life
W.A.A., Secretary
Hi-Eds
Student Council
Jambar, Editor
Delta Epsilon
Sigma Tau Delta, President,
Secretary, Treasurer
Who's Who
Gamma Sigma
Y. C. Pin



**BISHOP RAMSEY
McDUFFIE**

**Bachelor of Arts
Biology**

Excelsor
Speech Society
Neon
Inter-racial Committee
Omicron Lambda
Kappa Alpha Psi, Polemarch

JUDITH L. MEGALA

**B. S. in Education
Elementary Education
Social Science**

International Relations Club
Elementary Teachers'; W.A.A.
Newman Club; Speech Society
Student Council; Jambar, Editor
Neon, Feature Editor, Editor
Chapel Choir
Senior Class President
Chairman of May Day
Delta Epsilon; Who's Who
Sigma Tau Delta, Vice-president,
Alpha Theta Delta; Y. C. Pin



**CLIFFORD W.
MOORE, JR.**

**Bachelor of Arts
Social Science**

Religion in Life
Delta Epsilon
Veterans Collegiate Society
Sigma Tau Delta
Who's Who

**HAROLD RAYMOND
MOREY**

**Bachelor of Arts
Biology**

Houghton College
President of Junior Class
Basketball
Football
Youngstown College
Omicron Lambda, Vice president



ANN VIRGINIA MORGAN

**B. S. in Education
Elementary Education**

Elementary Teachers'
Professional Club
Orchestra

**MARY CATHERINE
MURPHY**

**Bachelor of Science
Nursing**

Newman Club
Omicron Lambda
Eta Delta Sigma
Student Council
Pan-Hellenic, President,
Secretary



SOPHIE RUTH NATHAN

**B. S. in Education
Elementary Education**

**EDWARD MICHAEL
OSTROWSKI**

**Bachelor of Arts
Social Science**

Veteran's Collegiate Society,
Chaplain
Student Council
Pan-Hellenic
Jambar, Sports Editor
Phi Sigma Epsilon



**ANGELINA AGNESI
PAGANI**

**B. S. in Education
Elementary Education**

HARRY SAMUEL PAGANI

**B. S. in Education
Elementary Education**



**MARIAN M.
PAGLIASOTTI**

**Associate in Business
Administration**

Alpha Theta Delta
Mimes
Snow-flake Queen
May Day Pageant, Sleeping
Beauty
Newman Club, Secretary

**FRANCES MARIE
PALOTSEE**

**B. S. in Education
Elementary Education**

Art Club
Newman Club
Elementary Teachers'
Professional Club
Women's Athletic Association
Speech Society, Secretary
Jambar Staff
Phi Lambda Delta, Vice
President



**ELIZABETH GABRIELLE
PATRICK**

**B. S. in Education
Elementary Education**

Newman Club, Sec. of Ohio
Valley Province of Newman
Clubs
E. T. P. C., Pres. Treas.
W. A. A., Pres., V. Pres.
Jambar, Society Editor
Neon, Senior Editor
Secretary Senior Class
May Day Attendant
Delta Epsilon
Sigma Tau Delta
Who's Who
Alpha Theta Delta, Treasurer

**SULTANA THOMAS
PERRIS**

**Bachelor of Arts
Chemistry**

Omicron Lambda
Delta Epsilon
Sigma Tau Delta



**MARY MAGDALENE
PETRANSKY**

**Bachelor of Science
Nursing**

Omicron Lambda

MARY ANN POPE

Bachelor of Arts
English

Newman Club
Speech Society
Hi-Eds
Snowflake Attendant
Sigma Tau Delta
Phi Lambda Delta



MADELINE ANGELA PUCCI

Bachelor of Science
Music Education

International Relations Club
Newman Club; W. A. A.
Mimes; Who's Who
Speech Society; Student Council
Dana Music Forum
Jambar; Neon
Chorus; Chapel Choir
Junior Class Vice President
Band; Orchestra
Sigma Alpha Iota, President
Sigma Tau Delta

ELVERA BELLA ROSSI

B. S. in Education
Business Education

International Relations Club
Newman Club
Hi-Ed's, President
Pan-Hellenic Council
Delta Epsilon
Sigma Tau Delta
Who's Who
Tau Kappa Nu, President



MARY GERTRUDE ROTHERMUND

Bachelor of Arts
English

Religion in Life; Mimes
Speech Society; Hi-Eds
Debate Club; Jambar
Chorus; Who's Who
Pan-Hellenic Council
May Prom Attendant
Sigma Tau Delta
Alpha Psi Omega
Phi Lambda Delta, Treas., Pres.

MARJORIE GERMAINE THOMAS

Bachelor of Arts
Biology

Newman Club, Vice President
Mimes; W. A. A.
Jambar, Circulation Manager
Neon; Who's Who
Junior Class President
Senior Class Vice President
Pan-Hellenic Council, Sec., Treas.
Chairman, Junior Prom
Chairman, Interfraternity Dance
Junior Prom Attendant
May Prom Attendant
Gamma Sigma, President



MARCIA ANN WELSH

Newman Club V. Pres., Sec.
Women's Athletic Association
Mimes, Corresponding Secretary
Hi-Eds; Jambar
Student Council, Sec., V. Pres.
Neon, Photography Editor
Junior Class Vice President
Pan-Hellenic Council
Chairman of Freshman Reception
May Prom Attendant
Delta Epsilon
Sigma Tau Delta
Who's Who; Y. C. Pin
Alpha Theta Delta, V. Pres.

LUCILLE WEISEL

B. S. in Education
Music Education

Dana Music Forum
Chorus
Chapel Choir
Sigma Alpha Iota, Vice
President
Delta Epsilon
Sigma Tau Delta



JOHN D. WILLIAMS, JR.

Associate in Business
Administration
Accounting

MORRIS J. ABRAMOVITZ
Bachelor of Science in Education

RUTH BANFIELD
Bachelor of Science in Education

REED SPROUL BATTIN
Bachelor of Laws

DONALD RUSSELL BERNAT
Bachelor of Science

ROBERT M. BIRCH
Bachelor of Arts

PHYLLIS JANE BIVIANO
Title of Associate in Business Administration

MILDRED IRENE BRIGGS
Bachelor of Science in Education

VIRGINIA R. BRUGLER
Title of Associate in Business Administration

FREDERICK ALBERT COOPE
Bachelor of Laws

MARJORIE B. CURRY
Bachelor of Science in Education

AMELIA JANET CVENGROS
Title of Associate in Business Administration

EVA LOU DeARMENT
Bachelor of Science in Education

LEO E. DOWNEY
Bachelor of Laws

WILLIAM STALL DUSTMAN
Bachelor of Science

ANNA FAHRNEY
Bachelor of Science in Education

ROSE FEDYNA
Title of Associate in Business Administration

ALICE REAGAN FUNKHOUSER
Bachelor of Science in Education

EILEEN GWIN
Title of Associate in Business Administration

HAZEL M. HOOD
Bachelor of Science in Education

IDA BELLE HOOD
Bachelor of Science in Education

MARY LOUISE HURA
Title of Associate in Business Administration

LEOTTA LOUISE JAMES
Bachelor of Science in Education

FREDERICKA ELIZABETH KOCH
Bachelor of Science

GERTRUDE ANN KUSHNER
Title of Associate in Business Administration

FRED C. LANZ, JR.
Bachelor of Arts

EVANGELINE MAGOULAKIS
Title of Associate in Business Administration

LOUISE MAJIK
Bachelor of Science in Education

MARY ANN MATIS
Title of Associate in Business Administration

EDNA L. McBRIDE
Bachelor of Science in Education

MARY THERESA McGUCKIN
Bachelor of Science in Education

MAEBELLE McINTOSH
Bachelor of Science in Education

ROBERT H. McMURRY
Bachelor of Science in Education

RUTH ELIZABETH MEADOWS
Bachelor of Science in Education

REGINA J. MELODY
Bachelor of Science in Education

MINNIE GERTRUDE MIRKIN
Bachelor of Science in Education

JANE A. O'BRIEN
Bachelor of Arts

WILLIAM OMEIS
Bachelor of Science in Education

ELMER THOMAS PHILLIPS
Bachelor of Arts

LUCY JONES PUCK
Bachelor of Science in Education

JOHN RUFFALO, JR.
Bachelor of Laws

HENRY W. P. SCHMIDT
Title of Associate in Business Administration

JEAN K. SCOTT
Bachelor of Science in Education

HARRY SISEK
Bachelor of Arts

MARJORIE STORES
Title of Associate in Business Administration

ROBERT LOUIS TATMAN
Bachelor of Laws

DORIS MARIE TAYLOR
Title of Associate in Business Administration

SISTER M. BARBARA TURK
Bachelor of Science in Education

ROBERT LONG WALKER
Bachelor of Arts

HELEN JANE WHEELER
Bachelor of Science in Education

RICHARD OLIVER WILSON
Bachelor of Laws

JENNIE ZHUCK
Bachelor of Science

Juniors

Officers of various campus organizations. One year to go. Pan-Hell prexies Jerry Watt and Mike Kirwan. Welcoming scores of juniors back to school. Brains in Delta Epsilon. Cramming for exams. Greek presidents—Gene, Jean, Joe and Jerry. Bradshaw, president of R. I. L. Maryanna Tornich, president of Y. W. G. S. A promising senior class. The Junior Prom at Stambaugh's. Our beautiful queen. Listed in the honoraries. Prexy Howard Edsall an all-around man. Freshman prexy last year and graduating this August.



Front Row—Grice, Davies
Back Row—D'Isa, Edsall

OFFICERS

President Howard Edsall
Vice President Jeanne Grice
Secretary Virginia D'Isa
Treasurer Hal Davies



3rd row—Watt, Udell, Wilson, Woods, Nicewaner, Parmenter, Rose, Smith
 2nd row—Schettino, Rozich, Mastadonna, Owens, Rich, Tornich, Woloxsyn, Peppel, Steel, Naughton,
 Taylor
 1st row—Delfs, Poole, Mellinger, Sontich, Raptou, Pilz, Walker, Peyko



2nd Row—Lawthorn, Kurilla, Lutz, Kirwan, Charlebois, Cubbison, Fortunato, Gamercle, Butts,
 D'Isa, Kalivas, D'Orsi
 1st Row—Kosma, Edsall, Bradshaw, Jahn, Goodrich, Kostyk, Grice, Davies

Sophomore Class

Getting accustomed to college life. Renewing activities. Attending the dances. Active in organizations. Members on the Dean's List. Velker and Vesey aiding the Jambar and Neon. The halfway mark towards a degree. Phyllis and Marion, prom queens. The feeling of belongingness. Covelli and Blazina in Council. Schettino an able president. Class and club officers. Patrinos, Phi Sig prexy. Anticipating two more years of fun.



Front Row—Kristy
Back Row—Rich, Munz, Schettino

OFFICERS

President Robert Schettino
Vice President Daniel Rich
Secretary Isabel McLennon
Treasurer Charles Kristy



First row—P. Muehlbauer, J. Staaf, Mattis, L. Sisek, G. Kushner, M. Dyer, D. Taylor, J. McCormick,
 M. Mantle, M. Nagel, E. Simko
 Second row—Magalarus, Sumerland, M. Patterson, B. Nace, H. Mentzer,
 Third row—S. Merritt, D. Marlos, W. Munz
 Fourth Row—R. Muccio, C. Kazenski, Moore, Stores, Parker



2nd Row—Timko, Snyder, Skinner, Reed, Uray, Williams, Rodway, Allen, Pagliasotti, Ugran,
 Williams
 1st Row—Thomas, Sisley, Sankey, Setnyk, Anderson, Velker, Vesey



First row—A. Detesco, P. Ford, I. Aswad, L. Denkleberg, M. Higman, F. Anderson, A. Yewall, A. Carrino, DeConto

Second Row—P. Grein, V. Brugler, V. Folkwein, V. Antonovich, B. Arnold, R. Hum, H. Guy, R. Fish, A. Brennan, Amundson, M. Ferranti, F. Gutman, R. Backus, T. Malkoff, Cataland

Third Row—J. Creps, Morris, T. Thomson, O. Bulgo



Freshman Class

Coming to college. Millions of men. Getting acclimated. Welcoming the veterans. The hectic campaign for class elections. Alice Woodside a Pan-Hell attendant. Members on the Dean's List. Prexy Dave's sense of humor. Alice and Bob, Council representatives. The two freshman receptions. Stag line, too. More people than we've seen in a long time. The Freshman Tea for our mothers. Going Greek. The little green frosh caps. Building the foundation for a college career.



Left to right—Chop, McMahon, Lichenstein

OFFICERS

President Dave Lichenstein
Vice President Edward Chop
Secretary James McMahon
Treasurer Millard Biggs



First Row—Taylor, A. Woodside, Tesone, W. Wohmer, F. Wells, C. Yoho, G. Thomas, H. Wilhelm,
 H. Wymer, V. Tornich
 Second Row—G. Wood, J. Werden, Waters, P. Smaldino, J. Walsh, Uber
 Third row—E. Wilson, J. Ventresco, P. Shellhammer, Yelsanko, Yabalonski, R. Weyer, M. Weaver,
 A. Travnovich, T. Walsh, W. Wellington



3rd row—Gnagy, Geewas, De Pasqua, Daly, Feyock, Finn, C. Gardner, J. Gardner, Deramo, Dickson,
 Deeder, Green, Czap
 2nd row—Furney, Divelli, Cianciola, Duff, Forsythe, Demshuk, Dinger, Dornbrock, Donie, Forney,
 Gampetro, Favis, Gundry, Fortunato
 1st row—Delfs, Fowler, O'Brien, Findley, Davis, De Bias, O. De Lucia, J. De Lucia, Gemma, Glass,
 Garbett, Hayes, Greene



First row—Taub, Rowls, Shirrila, A. Phillips, J. Porter, E. Morgan, J. Stimmel, A. Skripac, Roberts, Sulenski
 Second row—G. Timer, W. Poremsky, A. O'Connor, Shing, D. Sostaric
 Third row—L. Tuhill, R. Rose, F. Smaldino, J. Quinn, J. Pope, Pyle, W. Rich, J. Phillips, Moanous
 Fourth row—D. Pepey, J. Pekarcik, P. Panak, R. Rachel, J. Small, R. Shreve
 Fifth row—T. Richardson, L. Pisani, Strahl, Shay, R. Oslakovich, E. Quirk, E. Deak, C. Sabino, Sprinkle, P. Sullivan



3rd row—Durda, Cook, Casey, Boyd, Cannon, Billet, Chrislip, Corvella, Costa, Boylan, Black, Baker, Chop, Crook, Berger
 2nd row—Cappy, Birney, Christos, Stathies, Catania, Boukas, Bascom, Altman, Jones, Bennett, Browley, Albright, Cramer, Carlisle, Corbin, Baker, Brewster, Collins
 1st row—Adamosky, Anthony, Bequeath, Booth, Cox, Bartsch, Barganier, W. Adams, Beck, Alexander, J. Adams, Coleman, Benford



3rd row—Maddocks, Mellinger, Liple, Lockwood, Maurice, Hoffel, McFarland, McMahon, Manning,
Mooney
2nd row—Jones, Jessup, Hammar, Hoyt, Keaggy, Miller, Moser, Mayhew, Lichenstein, Noufer, Hanley,
Melnich, Manche, Partridge
1st row—Goerf, King, Jahn, Lynch, Lesky, Joyce, Hasack, Highriver, Johnson, Knight, Lanz,
Moore, Machey



Activities



Student Council



Left to right—Welsh, Megala, Blackman, Grice, McCallister, Peyko, Watt, Covelli, Blazina, Shreve, Grimsley, Woodside



Left to right—Grice, Welsh, Blackman, Watt

OFFICERS

President Gerald Watt
 Vice President Marcia Welsh
 Secretary Jeanne Grice
 Treasurer Virginia Blackman
 Advisors Mrs. Karl Dykema
 Miss Ivis Boyer

MEMBERS

Senior Representatives

Lois McCallister
Virginia Blackman

Junior Representatives

Jeanne Grice
Gerald Watt

Sophomore Representatives

Larry Blazina
Frank Covelli

Freshman Representatives

Alice Woodside
Robert Shreve

Representatives at Large

Marcia Welsh
Joseph Peyko

Advisors

Mrs. Karl Dykema
Miss Ivis Boyer

Neon Editor

Judith Megala

Jambar Editor

June Grimsley

Governing body on campus. Regulating organizations' activities. Promoting harmony and friendship among groups. Able leadership of Jerry. The Freshman Reception. Largest we've had in years. Freshman Breakfast at Pioneer Pavilion. Waffles and syrup. Dead Turkey Hop. Climaxing Thanksgiving vacation. The Christmas Snow-flake Frolic. Marian Pagliosotti reigning as queen. Redecorating the lounge. New rules and regulations. Spring Fever Frolic at the Pick-Ohio. The Bare Brunch at Mill Creek. Plaid shirts and blue jeans. Sig Delt-Kappa Sig baseball game. The Junior Prom at Stambaugh's. May Day. First in five years. May Prom. Electing campus heads for next year. Ending a very successful school year.



The highlight of the Junior Prom. Crowning of the queen. The impressive processional—soft light—dreamy music. The coronation. Another Junior Prom queen—Margie Nicewaner. Smiles, congratulations—and happiness.



"Let's sit this one out." Taking a breathing spell during the Junior Prom. Beautiful long dresses with corsages to match. Edie Rodway pointing out something of interest. The rest looking on. Sounds like something interesting.

Neon



Judith Megala
Editor

The Neon edited by Judy, Jean and Marge assisting. Those extending deadlines. Prayers for sunshine for the pictures. That mad Sunday afternoon with Judy, Jean, Marge, Mary and Polly writing copy. Danny and Bill hounding the business men for advertisements. Our own yearbook. The "get the Neon-out-this semester" motto. Prof. Dykema our advisor.

Getting the year book to press. Bad weather holding up the pictures. Will the sun never shine? More groups of freshmen. Collecting informal snapshots. Identifying cuts. Are you sure he goes here? Nobody knows him. Another addition to our memories of college.



Business Manager—Daniel Rich and
Assistant Editors—Jean Mellinger, Marjorie Thomas

STAFF

Editor-in-Chief Judith Megala
Associate Editors Jean Mellinger, Marjorie Thomas
Business Manager Daniel Rich
Feature Editor Jeanne Grice
Photography Editor June Grimsley
Art Editors Anthony Mastadonna, Jacquelyn Smith
Advertising Manager William Parmenter
Circulation Manager Mason Dyer
Senior Editors Elizabeth Patrick, Mary Bell Gilbert
Organization Editor Jane O'Brien
Class Editors Mary Vesey, Polly Velker
Advisor Karl F. Dykema



Standing—Megala, Edsall, Dyer, Parmenter, Grimsley, Vesey
Seated—Patrick, Bradshaw, Schettino, Nicewaner, Mellinger, Thomas, Velker, Lawhorn, Davies, Grice

Jambar



June Grimsley
Editor

The Jambar staff under the editorship of June. Lotie her able assistant. Typing into the wee small hours. Deadlines to make. Hal handling the business end.

New Jambar office in Business School. Huge increases in staff at mid-semester. Circulation hits all time high. Big time at O. C. N. A. Convention at Toledo University. Prof. Reid our able advisor.



Assistant Editor—Lotus Koken and
Business Manager—Hal Davies

STAFF

Editor June Grimsley

Assistant Editor..... Lotus Koken

Business Manager Hal Davies, Willam Jones, William Reed, Jeanne Grice

Circulation Manager Marjorie Thomas, Debby Butts, Virginia Blackman

Society Editors Elizabeth Patrick, Dawn McClelland

Staff Writers Judy Megala, Mary Vesey, Virginia D'Isa, Elvera Hrecz,
Margaret Nicewaner, Kenneth Love, Olga Poiniski, Howard Edsall,
Bertha Arnold, Jannik Frotte, Alice Turner, Tom Manche, Jean
Mellinger, Polly Velker, Grett Rothermund, Alice Woodside, Rita
Donie, Lucille Guidos, Mary Bell Gilbert, Robert Hum, Louise Denkle-
berg, Betty O'Brien, J. Orlando Lawhorn, Ralph Goldich.

Faculty Advisor..... Prof. O. L. Reid



Left row—Megala, Blackman, Windish, Love, Partridge, Frotte
Center—Grimsley, Koken, Mellinger, Edsall, Grice, Davies, Nicewaner, Butts, Vesey
Right row—Thomas, Patrick, Lawhorn, Velker, Arnold, D'Isa, Hum

Pan-Hellenic Council



OFFICERS

First Semester

Chairman Gerald Watt
 Secretary-Treasurer ... Jean Mellinger

Second Semester

Chairman Michael Kirwan
 Secretary-Treasurer John Creps
 Advisor Prof. Karl Dykema

Left to right—Watt, Mellinger, Kirwan, Creps

Organization ruling activities of all Greeks. Two representatives from each sorority and fraternity. Promoting friendship among the Greeks. Welcoming Phi Gamma and Sigma Delta Beta as active fraternities. The Pan-Hellenic Sweetheart Formal at Stambaugh's. Crowning Lola Raptou Pan-Hell Sweetheart. Mellinger and Lanz trying to out-fox the Internal Revenue Department concerning tax for dance. Able refereeing by Jerry and Mike. Settling debates and arguments.

Standing—Kirwan, Creps, Rich, Watt

Seated—Grimsley, Blackman, Sontich, D'Isa, Mellinger, Planchak, Kalivas, Petrinis



Alpha Rho Tau



First row: J. Lawhorn, C. Christos, Hobbins, J. Schall, J. Milliken, B. Boyts, M. Andesson
 Second row: F. Smaldino, O. DeLucia, Gleeden, I. Bohner, Abbas
 Third row: T. Mastadonna, D. Rich, J. Novicky, S. Hardy
 Fourth row: R. Hansson

Fraternity for students carrying at least six hours of art courses. Stimulating interest in art appreciation. Tomorrow's Rembrandts. Greeting veteran art students. Round table discussions. Lectures. Trips to the art museum. Exhibitions. A year of art education.



OFFICERS

President Anothony Mastadonna
 Vice President Steve Bencetic
 Secretary Joyce Schall
 Treasurer Robert Hansen
 Advisor Miss Margaret Evans

J. Schall, T. Mastadonna, R. Hanssen, S. Bencetic

Mimes



OFFICERS

President Robert Hum
 Vice President Barbara Green
 Rec. Secretary Shirley Skinner
 Corres. Secretary Melvina Lanz
 Reporter Philip Crook

Crook, Lanz, Matune, Skinner, Green, Hum

A flair for the dramatic. "Oh Romeo, where art thou." The chorus line inspiring bond selling. Successful chapel programs. Welcoming new members. Sporting Mimes keys. Richard Gage, Playhouse director, coaching us in dramatics. Attending performances at the Playhouse. Learning by experience. Play production classes. Reading plays. Lunt and Fontaines of tomorrow!

3rd Row—Simko, Crook, Hum, Jones
 2nd Row—Schettino, Durso, Collins, Adams, Gram, Gnagy
 1st Row—Donnelly, Barganier, Garbett, McKean, Scripac, Delfs, Lanz, Richardson



Speech Club

OFFICERS

President Kay Kabealo
Vice President Elaine Carlisle
Secretary Betty Lou Reynolds
Treasurer William Bowie



Left to right—Carlyle, Mr. Elser, Kabealo

Open to all would-be orators. Developing talent. Speech conference at Notre Dame in January. Discussions. Student congress at Baldwin-Wallace. State tournament at Wooster. Winning half of the debates. Frank Beshara organizing a bill on military conscription. Social events. The Christmas party at Reynolds. Debate tournaments at Western Reserve. Annual spring party. Another successful year in activities and debates.

Front Row: K. Barganier, D. Moore, M. Lanz, K. Kabealo
Back Row: Mr. Elser, E. Carlyle, W. Jones



Newman Club



Front Row—Lynch, Welsh, Peyko
Back Row—Blazina, Pagliasotti

OFFICERS

President Larry Blazina
 Vice President Joseph Peyko
 Corres. Secretary Marcia Welsh
 Rec. Secretary Marian Pagliasotti
 Treasurer Mary Lou Farina
 Advisor Rev. Arthur B. DeCrane



First row—Baresti, Biviano, M. Lesky, P. Grein, R. Donie, P. Lynch
 Second row—DiChalko, J. DeLucia, Corbin, G. Goers, D. Kurilla, A. Carrino, Brownlee, C. Cianciola,
 L. Casey
 Third row—M. Sekela, F. Hoffer, J. Green, J. Battaforano, L. Costa, Davilli, A. Cafaro, E. Chops



First row—A. Garde, F. Palotsee
 Second row—J. Peyko, K. Naughton, D. Sostaric, A. O'Connor, J. Tesone, J. Reel, J. Megala, J. Porter,
 B. O'Brien, M. Pagliasotti, M. Welsh, W. Rich
 Circle—F. Smaldino, R. Rachel, P. Mooney, P. Organ, J. Finn, F. Manning, J. Walsh, A. Tauss, L. Blazina,
 D. Rich, R. Schettino, R. Muccio, Yablonkai

Open to all Catholic students of the college. Parties at the Catholic Action Center. Three-day convention in November. Greeting Newmanites from colleges in Michigan, Ohio, Indiana, and Kentucky. Annual Christmas party. Mardi Gras Formal at Stambaugh's. Buddy Rich and his orchestra. Phyllis Grein, the Mardi Gras Queen. Communion Breakfasts at St. Stephens and St. Brendan's. Intercollegiate Hop at the Elms. A steadily growing organization.



Reverend Arthur DeCrane

Religion in Life



3rd Row—Parmenter, Williams, Watt, Richards
 2nd Row—Nicewaner, Merritt, Mellinger, Moore, O'Brien, Morgan, Nace, Baker, Dr. Stearns
 1st Row—Rodway, Wymer, Taylor



Front Row—Bradshaw, Grice
 Back Row—Edsall, Dr. Stearns, Baird

OFFICERS

- | | |
|----------------------|--|
| President | June Bradshaw |
| Vice President | Howard Edsall |
| Secretary | Betty Baird |
| Treasurer | Jeanne Grice |
| Advisors | Dr. Henry V. Stearns
Dr. Harvey C. Holt |

Open to all Protestant students of the college. Participation in discussions. Fall Frolic at Bear's Den. Rainy weather. Crowded Cabin. Swimming party and dance at Y.M.C.A. Wet hair and buttermilk. Christmas party at Betty Baird's. Mistletoe and Sloppy Jo's. Gift exchange. The February hayride. Eating chili at June Bradshaw's. Annual dinner-dance. Dates and dancing. Picnic in May. Christmas Candle-light Service. Prominent speakers: Mrs. C. E. Bachstrom and Rev. Leon Sanborn. Luncheon for the officers. Membership drive.



3rd Row—Albright, Jones, Dyer
2nd Row—Edsall, Baird, Cox
1st Row—Bradshaw, Lanz, De Bias, Anthony

Elementary Teachers Professional Club



OFFICERS

President Rose Csiss
 Vice President Mary Bell Gilbert
 Secretary June Grimsley
 Treasurer Elizabeth Patrick
 Advisor Miss Frieda Chapman

Front Row—Raptou, Patrick, Gilbert
 Back Row—Grimsley, Miss Chapman

Grade-school teachers of tomorrow. The Hallowe'en Party welcoming new members. Listening to excellent talks by Father Bowman, former missionary to China. Serving Chinese cookies. Chinese decorations. Forming annual committees: social, Lola Raptou; notification, Rose Csiss; publicity, Judith Megala. Annual Christmas party. Christmas tree in Miss Chapman's room. Party with Hi-Eds. Christmas tea for the entire school. Selling tuberculosis seals. Guest speakers: Dr. J. Fred Essig, Katherine Jacobs. Party with alumni. Annual banquet at Women's City Club. Installation of new officers.

2nd Row—Donie, Tornich, Patrich, Felger, Knezovich, Bascom, Morgan, Corbin, Owens, De Bias
 Miss Chapman, Raptou, Johnson, Bailey, Gilbert
 1st Row—Whitworth, Berger, Stenyk, Chalebois, De Lucia, Nace, De Cunto, Carrino, Higman,
 Adavasio, Thomas, Sisley, Grimsley, Megala



Women's Athletic Association



2nd Row—Woodside, Moore, Mellinger, Uray, Duff, Stenyk, Charlebois
1st Row—Megala, Delfs, Blackman, Lukich, Palotsee

Greeting new members. The fun-loving, outdoor type. Bowling at Champion Bowling Alley. Christmas party with gift exchange. Hike in Mill Creek Park. Working up appetites. Cooking food over an open fire. Ping-pong tournament. More hikes. Boating on Lake Newport. Counting up points. Annual picnic. Presentation of letters and shields at last meeting of the year.

OFFICERS

President Dawn McClelland
Secretary Alice Woodside
Treasurer Jean Mellinger



Left to right—Woodside, McClelland, Mellinger

Hi-Eds



Back Row—Tornich, Poinski
Front Row—Bradshaw, Walker, Rossi

League of prospective high school teachers. Round table discussions. Joint meeting with E. T. P. C. Meeting at Buechner Hall. Speaker, Dr. Essig. First annual farewell banquet for graduating members. Members must maintain "B" average. The cream of tomorrow's high school teachers.

OFFICERS

President Elvira Rossi
Vice President Olga Poinski
Secretary Mary Alice Walker
Treasurer June Bradshaw
Historian Maryanna Tornich



3rd Row—Dean Wilcox, Trube, Schettino, Sambolic, Mastadonna, Rich
2nd Row—Walker, Wolosyn, Matune, Ugran
1st Row—Bradshaw, Tornich, O'Brien, Poinski, Rothermund, Rossi, Miss Cassano, Edsall

French Club



2nd Row—Lawhorn, Peppel, Denkelberg, Frotte, Durso, Glass, Richardson
 1st Row—Gemma, De Lucia, Ehrhart, Stefanick, Donnelly, Duff

"Parlez-vous Francais" Reactivated during the second semester. On French speaking terms. Learning French games. Bridge and bingo. Studying lives of French heroes. Discussions. Promoting foreign correspondence. Outings at Mill Creek Park. Getting reinstated as a college organization!

OFFICERS

- President Joseph O. Lawhorne
 Vice President John Lenhart
 Secretary Isabelle Durso
 Treasurer Thomas Richardson
 Advisors Dr. L. T. Richardson
 Mrs. Karl Dykema



Richardson, Durso, Lawhorn

Young Women's Group Social



OFFICERS

President Maryanna Tornich
 Vice Pres. and Sec. .. Evelyn Wolozsyn
 Treasurer Antoinette Carrino

Left to right—Wolozsyn, Tornich, Carrino

Young Women's Group Social. Open to all non-Greek women on campus. Freshmen teas held each semester. Welcoming new girls to YoCo. Packing Christmas baskets for the needy. With Christmas toys for children. Square dance. Swing your partner. The quiz program and spelling bee. Joint party with vets at American Legion Hall. Song fests.



2nd Row—Wining, Taylor, Miss Boyer, Morgan, Shing, Anatonovich, Merrit, Whitworth
 1st Row—Dinger, Miss Cassano, Bulgozdy, Gard, Carlisle, Carrino, Wolozsyn, Higman, Tornich, Reel

Dana Music Forum and Chorus



First row—D. Gard, J. Reel, Mrs. Dehnbostel, Weiding, Shing, Adams, DiCiccio, J. DeLucia, F. Wells,
L. Keck
Second row—Carter, Paxton, Dankovich, L. Ehrhart, W. Trube, G. Peppel, P. Shellhammer, Smith,
Streeter, Mionsen, Silenski, J. Lawhorn, Battista, T. Fortunato, Mr. Hollander



2nd Row—Ragozzine, Hamilton, Rachel, Hum, Lawhorn, Fox, Baker, Peppel, Gnagy
1st Row—Pearson, J. De Lucia, O. De Lucia, Gemma, Roberts, Sulenski, Taylor, Lanz, Shing,
Wells, Adams, Barganier, Dr. Stearns

Epsilon Theta Gamma



2nd Row—L. Howard, J. Howard, Greene, Townsend, Walton, Streeter, Wylie
1st Row—Barganier, Thompson, Stones, Johnson Parker, Starks

Sorority composed of the Negro girls of the college. Membership very selective. Encouraging leadership, scholarship, and character. Bowling parties. Splash parties—"come in, the water's fine." Steps towards becoming better Americans. Heaven and Hell party. Listening to book reviews. Opinions and discussions. Hikes in Mill Creek Park. Working up big appetites. Toasting weiners and marshmallows. The "big" event of the year—the May Prom. Formals and all. Building up a foundation for future years.



OFFICERS

President Eloise Barganier
Vice President Lillian Peques
Secretary Audrey Parker
Treasurer Bernice Starks
Advisor Dr. Bridgham

E. Barganier, Pres.; A. Parker, Sec.; B. Stark, Treas.

Honoraries



Delta Epsilon

Honorary scholastic fraternity. Juniors and Seniors with brains and perseverance. The Phi Beta Kappa at YoCo. Members must maintain two point scholastic averages. The membership carries with it privileges of voluntary class attendance. A step toward Y. C. pins.



Left to right—Pilz, Tornich, McCallister, Patrick, Rossi, Mellinger, Rozich, Zulick, Bradshaw, Walker, Welsh, Grimsley, Gard, Ferris, Thomas, Megala

Who's Who



3rd Row—Edsall, Rossi, Patrick, McCallister, Prof. Reid, Pres. Jones, Dean Wilcox, Watt, Blackman, Davies, Grice
 2nd Row—Rothermund, Gard, Thomas, Peppel, Bradshaw
 1st Row—Megala, Mellinger, D'Isa, Grimsley, Welsh

YoCo members of national organization. Appear in "Who's Who in American Colleges and Universities." Candidates are selected on their scholarship, leadership and potentiality for future usefulness in society and business. The most popular and outstanding members of the student body. Everyone knows them.

MEMBERS

Lois McCallister	Gladys Peppel	Robert Burke
Mary Elaine Malloy	Elvira Rossi	Hal Davies
Judith Megala	Grett Rothermund	Virginia D'Isa
Jack Mehler	Marjorie Thomas	Howard Edsall
Jean Mellinger	Gerald Watt	Dorothy Gard
Clifford Moore	Marcia Welsh	Jeanne Grice
Jane O'Brien	Virginia Blackman	June Grimsley
Elizabeth Patrick	June Bradshaw	

Sigma Tau Delta



OFFICERS

President Lois McCallister
 Vice President Judith Megala
 Secretary Lotus Koken
 Treasurer Maryanna Tornich
 Faculty Advisor Prof. O. L. Reid

Left to right—Koken, Megala, Tornich, McCallister

National Professional English honorary fraternity. Membership consisting of English majors and minors who have active and associate status respectively. Maintaining a "B" average in English. January banquet at Shadylawn tearoom. Formal candlelight installation service. Impressive fraternity colors: red and black worn by pledges. Outstanding speakers: George Madtes, Marion Resch, Elizabeth Miller, Lloyd Jones, and Mrs. Karl Dykema. Readings and dramatic presentations. Quotations in response to roll call. A Freshman Composition Award given to winner of essay contest. Another very successful year.

3rd Row—Prof. Reid, Schettino, Kristy, Pilz, Davies, Grice, Tornich, McCallister, Gnagy, Kostyk, Koken, Rossi, Grim, Baker, Grimsley, Rich, Hoyt
 2nd Row—Denkelberg, Morgan, Nicewaner, Wymmer, Vesey, Velker, Morgan, Welsh, Patrick, Melnick
 1st Row—Megala, De Bias, Owens, Arnold, Mellinger, Perris, Thomas, Bradshaw



Sigma Alpha Iota

OFFICERS

President Madeline Pucci
Vice President Lucille Weisel
Rec. Secretary Leona Erhart
Corres. Secretary Wealthie Bush
Treasurer Gladys Peppel
Chaplain Theresa Cassalini
Sergeant-at-Arms Marjorie Brimmer
Editor Elvira Hrecz



M. Pucci, L. Weisel, T. Cassalini, G. Peppel, W. Bush

National Professional Music Honorary Fraternity for women. Monthly musicals. Members in the Youngstown Symphony. Nineteen charter members. Benefit recital given by William Schroeder. Annual spring recital. Music week program. Fraternity chorus. Fraternity recital. Original compositions. Fraternity sing on campus.



Mrs. Dehnbestel, Pucci, Weisel, Taylor, Cassalini, Peppel, Bush, Gard, Miss Guarnieri

Omicron Lambda



Seated: Mrs. Bridgham, Rozich
Standing, Patterson, Steele, Dr. Worley

OFFICERS

President Rose Rozich
 Vice President Harold R. Morey
 Secretary Marilyn Patterson
 Treasurer Norma Steele
 Advisor Dr. Catherine B. Bridgham

Honorary biology fraternity. Membership by invitation, and scholastic qualification. Study and discussion of biological research and medicine. Six new members. Drs. Clair and Inga Worley as honorary members. Candle-light installation. Mrs. Mary Miles, medical illustrator, as guest speaker. Trip to Pittsburgh. Breakfast and hike in Mill Creek. Annual Banquet to highlight year's activities. "Doc" Worley as guest speaker. Watch for outstanding scientists.



Front row—Mrs. Bridgham, J. O'Brien, E. Zulich, N. Steele, M. Patterson, R. Rozich
 Back row—Dr. Worley, Bachus, Goodrich, J. Kostyk, Glass, E. Rodway, S. Phillips, R. Shreve

Gamma Iota Alpha



OFFICERS

President Ed Starron
 Vice President Mike Matune
 Secretary Frank Covelli
 Treasurer Ray Davis
 Exec. Committee Robert Hammar
 Raymond Quantrano, Ted Cook,
 Ted Snyder

2nd row—R. Quantrano, R. Hammar, R. Davis
 1st row—T. Snyder, F. Covelli, M. Matune, T. Cook

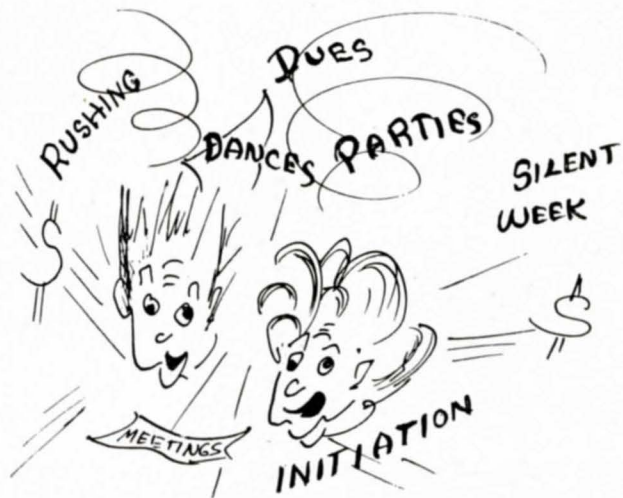
Fraternity composed entirely of veterans. Local Chapter of a national organization. Leaving sergeants and furloughs to take up college life. Becoming leaders in school activities. Joining fraternities. Members in Council. Trading fatigues for sharpie jackets. The constant filling out of papers. Getting absentee slips signed. Looking forward to life in college.



First row: Pesa, Hammar, Landau, Parsons
 Second row: Davis, Simko, Divanzo, Anzivino, Trevanovich, Walters, Fortunato
 Third row: Fabek, Harrison, Shay, Billet, Ross, Finn, Jamison, Williams, Chops, Luszc
 Fourth row: Ogrum, Rich, Botch, Patrinos, Weyer, Willmitch, Calvin, Matune, Snyder



With the Greeks



Alpha Theta Delta



2nd Row—Lukich, Blackman, Welsh, Flask, Patrick, Anderson, Grice, McCormick, M. Woodside, Sostaric, Shackelford, Knezovich, Yoho, Hayes, Brewster, Kostyk, Rozich, Tornich, Smith
 1st Row—Grimsley, Pagliasotti, Miss Humelbaugh, Nicewaner, Bradshaw, Green, Dornbrock, A. Woodside, Noufer, Mayhew, Bascom, Moser, Kosma, Kurilla, Megala



Front Row—Blackman, Grice, Patrick
 Back Row—Grimsley, Lukich

OFFICERS

President June Grimsley
 Vice President Virginia Blackman
 Corres. Secretary Helen Lukich
 Rec. Secretary Jeanne Grice
 Treasurer Elizabeth Patrick
 Advisor ... Miss Margaret Humelbaugh



Installation of new officers. Gala rush parties. Fiesta time. Coke party at Mill Creek. Singing by firelight. The hayride at Flo Anderson's. Welcoming Kathy Naughton back to school. Participation in Campus activities. June, Jambar chief. Six members in Council. Three Council officers. Judy, editor of Neon. Christmas party with the Phi Sigs. Carolling and the gift exchange. Attending the operas in Cleveland. Sleeping at Ginny's. Marion, a beautiful Snow-Flake Queen. Formal banquet at Poland Country Club. Group singing. Marcia on the College faculty. Initiating pledges. Traditional pledge bracelets. Phyllis, the Mardi Gras Queen. Eating pizza at the Victoria. Our new advisor, Miss Humelbough. Parties with the fraternities. Attending school functions. Annual formal dinner dance. Soft lights and sweet music. Looking forward to summer.

MEMBERS

1946

Virginia Blackman
June Grimsley
Helen Lukich
Judith Megala
Elizabeth Patrick

Margaret Nicewaner
Jacqueline Smith
Mary Woodside

1948

Florence Anderson
Marietta Anderson
Virginia Chill
Phyllis Grien
Florence Gutman
Frances Knezovich
Jeanne Mayhew

Jean McCormick
Cathleen Naughton
Marian Pagliasotti
Edith Rodway

1949

Mildred Bascom
Ilene Bohner
Georgia Brewster
Joanne Campbell
Rita Donie
Alice Dronbrock

Marjorie Flask
Barbara Green
Phyllis Hayes
Barbara Hengen
Dorothy Kurilla
Betty Moser
Mildred Noufer
Jacqueline Shackelford
Delores Sostaric
Violet Tornich
Alice Woodside



Playing peek-a-boo with the camera. Sunny days bringing out cameras—and smiling faces. Gathering on Campus—singing sorority songs. Wearing sorority pins. Going greek—and enjoying it with gusto.



Summer at Lake Geneva. Sun tans and bathing suits. Hand me that lotion. Midnight swims followed by hot dogs and potato chips. Eighteen girls in a cottage for eight. Summer time brings fun, fun, and more fun.

Gamma Sigma



4th Row—Koken, Moore, Lynch, Cramer, Guidos, Morgan, Wymer, Berger
 3rd Row—Thomas, Arnold, Porter, Folkwein, Uray, Jahn, Di Bias
 2nd Row—Mrs. Smith, Downie, Brugler, Owens, D'Isa, Jahn, Skinner
 1st Row—Mellinger, Velker, Vesey, Mantle, Owens



Front Row—Mellinger, D'Isa
 Back Row—Downie, Velker, Vesey

OFFICERS

President Jean Mellinger
 Vice President Jinny D'Isa
 Secretary Beverly Jackson
 Treasurer Polly Velker
 Historian Mary Vesey
 Social Chairman Peg Downie
 Advisor Mrs. Joseph Smith

Starting off with a bang. Big rushing season. Traditional hayride at Carrol's Cabin. Gay, Gay 90's party at Pick-Ohio. Grandma's clothes. Bustles and big hats. Formal dinner at Rose Room. Bids given out. Cute pledges with umbrellas and candlesticks. Able leadership by prexy, Jean. Spaghetti dinner at Carosella's. Gab sessions. Parties with frats. Christmas party at Peg's. Holly and mistletoe. Welcome brother Sig Delts. Betty Shutrump, former sister, most popular at Kent. Cookie, assistant editor of Jambar. Mary, chairman of Spring Fever Frolic. Marge Thomas and prexy assistant Neon editors. Party with Junior alumni. Polly, head of Bare Brunch. Rush party with Sig Delts at Mahoning Country Club. Pat, Mardi Gras attendant. Formal dinner-dance. White roses and sweet music. Mother-daughter banquet. Proud smiles. "Glad to meet you." Annual banquet to close sensational year. "Reign on, O Blue and White."

MEMBERS

1946

Virginia Brugler
Lois McCallister
Marjorie Thomas

1947

Virginia D'Isa
Peg Downie
Lotus Koken
Elinor Love
Jean Mellinger
Joan Owens
Elaine Woods

1948

Bea Arnold
Virginia Callahan
Virginia Folkwein



Marjorie Jahn
Beverly Jackson
Melva Mantle
Shirley Skinner
Marge Uray
Polly Velker
Mary Vesey

1949

Harriet Cramer
Lois DiBiase
Lucille Guidos
Martha Jahn
Marge Love
Patricia Lynch
Dorothy Moore
Eleanor Morgan
Jean Porter
Helen Wymer



The fun of initiation. High-heel shoes and ankle socks. Topped off with rag curlers. Bowing to activities. And then it's all over—and with it a feeling of belongingness.



Posing for the camera. Bright cheerful looks anticipating fun. Candid snaps today—memories of tomorrow.

Kappa Sigma Kappa



Front Row—McGovern
Back Row—Watt, Simko, Hornak

OFFICERS

President Gerald Watt
 Vice President John Hornak
 Secretary James McGovern
 Treasurer Edward Simko
 Advisors Prof. Willard Webster
 Prof. P. P. Buchanan
 Dr. Joseph Smith



First Row—R. Hammar, R. Wilcox, R. McCracken, W. Hermley G. Watt, J. Welsh, M. Yatsko, J. Hornak
 Second Row—W. Tarazewski, W. Slijka, E. Simko, R. Davis, E. Lindsay, F. Lanz, J. Staal, J. Cappy
 G. Osborne, T. Walsh, J. McGovern, K. Love, W. Westerman, Mr. Buchanan
 Third Row—H. Maurice, W. Maddocks, R. Van Fossan, M. Matune, J. Scofield, D. Gundry, N. Schiu,
 C. McDonald, P. Muehlbauer, R. Stewart, D. Rich, R. Sprinkle

Only national fraternity on the campus. Wearing fraternity sweaters in gold and blue. Sponsoring the annual Sadie Hawkin's Dance in November. Dogpatch comes to YoCo. Awarding prizes to Ken Love and Jeanne Grice. The evening smoker at the American Legion. Formal rush dinner at the Dinner Bell. Active on campus. Jerry, frat prexy and Student Council's head. Bob Burke, representative in Council. Danny Rich, business manager of Neon. Initiation at Bear's Den. Joint parties with the sororities. Giving a big welcome to old members back on campus: Jim McGovern, Ed Lindsay, Bob McCracken, Mike Yatsko, Bill Maddocks, Ralph Stewart, Jack Staaf, Paul Muehlbauer, Fred Lanz, Glen Osborne, and Joe Schofield. Formation of a basketball team. Game with the Phi Sigs. Lindsay getting married. Baseball game with Sig Delts at Bare Brunch. Stag parties. Annual spring formal dinner-dance.

MEMBERS

1946

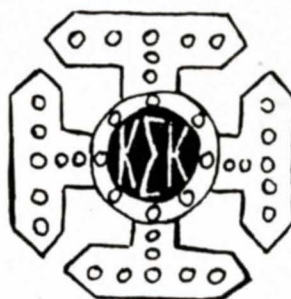
Fred Lanz
Michael Yatsko

Joseph Schofield
Edward Simko
Jack Staaf

Ray Davis
David Gundry
Robert Hammar
Charles McDonald
William Maddocks
Jack Parker
Nick Shue
William Slifka
Walter Terazewski
Ted Walsh
William Westerman
Robert Wilcox

1947

John Hornak
Michael Matune
Robert McCracken
Delbert McEwen
Glen Osborne
Daniel Rich
Ralph Stewart
Gerald Watt
Charles Wilson



1948

Edward Lindsay
Kenneth Love
James McGovern
Paul Muehlbauer

1949

William Bowie
Jack Cappy

1950

Walter Hermly
Howard Maurice
James McMahan
James Mellinger
Robert Sprinkle
Richard Van Fossen
Joe Welsh



Jerry sounding off the gun. To start another race for the annual Sadie Hawkins Day. Dressing Dogpatch. Big affair at night. Lil' Abner, Daisy Mae and kickapoo juice. Traditional Kappa Sig affair.



Between classes—stroll to the engineering building. Why didn't I do that math last night? Burdened down with books and papers and unfinished lessons.

Phi Gamma



Front Row—Kirwan
Back Row—Siersdorfer, Manning, Sontich

OFFICERS

President Joseph Sontich
 Vice President Michael Kirwan
 Secretary Fred Manning
 Treasurer Fred Siersdorfer
 Advisor Mr. Elser

MEMBERS

1947

Michael Kirwan
 Joseph Peyko
 Joseph Sontich

1948

Leo Casey
 Dick Kindler
 Fred Manning
 Paul Mooney
 Philip J. Organ
 Fred Siersdorfer

1949

Jack Albaugh
 Paul Burke
 Lewis Dickson
 Donald Finn
 Jack Finn
 Edward Forney

Charles Hanley
 Ray Martz
 Joseph Morris
 Albert Tauss
 John Walsh
 Melvin Weaver



Time out between innings at Bear Brunch baseball game. Big deal pitching by Kirwan. Surrounded, as usual, by we-always-stick-together Phi Gams.

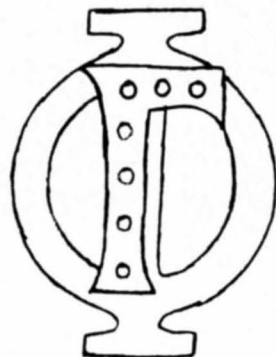


The Phi Gams smile. Hiding behind them the likeable personalities of brother fraternity men. The clannish type. Always together. Classes, dates and the like.



Back row—Martz, Dickson, Casey, Manning, Organ, Forney, Hanley, J. Finn, Mr. Elser, Morris
 Front Row—Siersdorfer, Walsh, Weaver, Sontich, Mooney, Peyko, Tauss, Kirwan

Greetings to another returning frat. Four active members. Plans to build to former strength. Letters to alumnae. Plans for rushing. Kirwan elected Pan-Hell chairman. Smoker at the Pick-Ohio. Final rush party at Mahoning Country Club. Sixteen pledges. More returning brothers dropping in. Chances on nylon hose. Publicity in Kent Stater for a certain pledge. Prexy Joe organizing brothers. Plans for annual barn dance. Junior Kirwan as big business man. All the boys playing the field. Quiet Fred Siersdorfer. Joint party with sister Phi Lambs. Manning's sharp clothes. Frequent bull sessions. Organization within the organization "Admirers of Paul Mooney." Spring formal. Favors and white carnations. A frat house, we hope. "Here's to you." The drinking song. A great past. A greater future.



Phi Lambda Delta



2nd Row—Poremsky, Altman, Hoover, Stathies, Aswald, Lippley, Lanz, Ford
1st Row—Raptou, Adavasio, Palotsee, Thomas, Medicus, Poinski, Nagel, Pope, Detesco



Front Row—Rothermund, Poinski
Back Row—Raptou, Thomas, Palotsee

OFFICERS

- President Grett Rothermund
- Vice President Frances Palotsee
- Secretary Lola Raptou
- Treasurer Polly Thomas
- Corres. Secretary Olga Poinski
- Advisors Mrs. P. Calvin Pickard
Mrs. P. P. Buchanan

MEMBERS

1946

Frances Palotsee
Mary-Ann Pope
Grett Rothermund

Janet Jones
June Medicus
Mary Nagel
Joyce Patterson

1947

Ida Adovasio
Olga Poiniski
Lola Raptou
Pauline Thomas

1949

Martha Altman
Florence Blana
Patricia Ford
Eleanor Harris
Mary Jane Hoover
Patricia Joyce
Melvina Lanz
Wanda Poremski
Joyce Schall
Florence Stathies



Welcoming Ida Aswad, June Medicus and Janie Thompson back to school. The fun of rushing. The sport dance in the fall. Traditional Russian party. Formal banquet at Pick-Ohio. Orchids. The costume Hallowe'en party. Welcoming brother Phi Gams back into the fold. Lola, a beautiful Pan-Hell Sweetheart. Joint parties with the fraternities. Installation at Stoneleigh. Successful Campus Nighter at Mill Creek Park. Initiating pledges. Mary Lou Volosin, former Phi Lamb, elected Burr Queen at Kent State. Mrs. Buchanan, our new advisor. Party at Buechner Hall. Style show. Parties at homes of members. Wearing sorority sweaters. Formal dinner-dance.



Exchanging secrets. Who's your date for the prom? The thrill of belonging to a sorority. Serving on committees and helping make parties a success.



The gathering of the sisters. Something big ahead. Suits and high-heeled shoes. Sharp change from standard skirts and sweaters. Mmmm. Just smell that spring air.

Phi Sigma Epsilon



2nd Row—Marlos, Ugran, Burns, Czesinki, Reed, Anzivino, Trube, Lichenstein, Hum, La Civita
 Reany, Furney, Hankins, Wilson, Richards, Melnick, Rachel, Ross, Avner, Lenhart
 1st Row—Kirsty, Dyer, Schettino, Edsall, Davies, Petrinis, Botch, Williams, Munz, Berger, Cafaro, Timko

MEMBERS

1946

Robert Burns
 Howard Edsall
 Edward Ostrowski

1947

Frank Covelli
 Hal Davies
 Robert Hum
 Emil LaCivita
 John Loney
 Anthony Mastadonna
 William Patrinis
 Mario Ross
 Harry Round
 Robert Schettino
 William Trube

1948

Fred Anzivino
 Andrew Cafaro
 John Creps
 Mason Dyer
 Sam Hankins
 John D. Jones
 Chester Kazenski
 Charles Kirsty
 Arthur Lenhardt

George Libertine
 David Lichenstein
 Daniel Marlos
 Willard Munz
 John Novicky
 Steve Phillips
 James Reany
 William Reed
 Nicholas Ross
 John Sambolic
 John Timko
 Victor Ugran
 Arthur Williams

1949

Ralph Anzivino
 Hirsh Avner
 Leroy Berger
 Robert Berger
 John Botch, Jr.
 James Brown
 Louis Costa
 Joseph Czap
 Frank Davelli, Jr.
 Harry Deskin
 Paul Feyock
 Robert Furney
 Martin Guadiose
 Andrew Geewax
 William Jessup
 David Keaggy
 William Jones, Jr.
 John Marlos
 Arseny Melnick
 James Miller
 Sam Monte
 John Phillips
 Robert Rachel
 William Rich
 Thomas Richardson
 Robert Rose
 James Ventresco
 Eugene Wilson
 Charles Wittenauer





Front Row—Kazenski, Schettino
Back Row—Dyer, Davies, Reed, Patrinos

OFFICERS

President William Patrinos
 Vice President Hal Davies
 Secretary Chester Kazenski
 Treasurer Robert Schettino
 Advisor Mr. Karl Benkner

Traditional rush breakfast at Bear's Den. Hot coffee with bacon and eggs. Week-end Polka Dot Dance at Lake Erie College. Fraternity ties. Blue with white letters. Annual Christmas party with Alpha Deltas. Christmas tree and green, green holly. Formal dance at the Poland Country Club. Outstanding members on campus. Loney, president of Ohio Valley Province of Newman Clubs. Hal, business manager of Jambar. Bob Schettino and Howard Edsall, class prexies. Largest fraternity on campus. Davies and Grice still holding hands. Rough house initiation. Hard life—this. Hearty handshakes for Phi Sigs home from the service. Wedding bells ringing for Ugran, Novicky, and Burns. Annual Founder's Day Banquet.

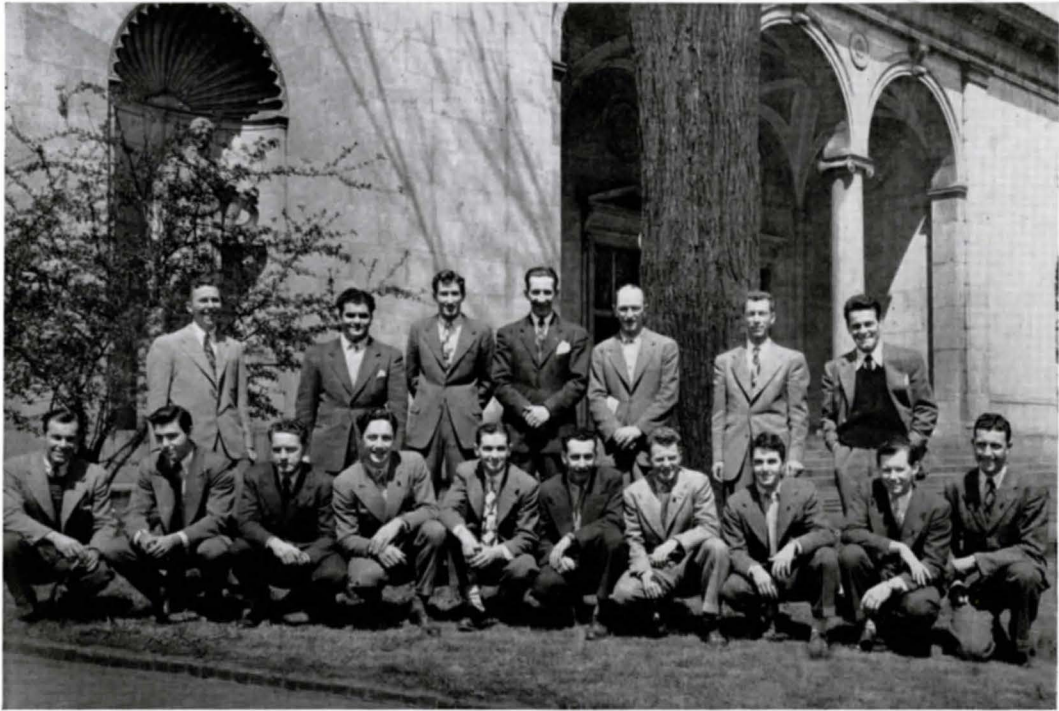


Bend over. 'Way 'way over. Getting initiated. Joining the brotherhood. Get the gleam in the Actives' eyes. Raw egg shampoo with molasses rinse. A semester of initiation—but it's really worth it.



Grins of the new members. Sporting "tee" shirts and happy faces. Happy brotherhood. Nine rahs for us—we're finally "in."

Sigma Delta Beta



2nd Row—Boyd, Ragozzine, Cubbison, Sheffield, Rose, Planchak, Kalivas
1st Row—Hardy, Ellis, Green, Allen, Thomas, Davanzo, Rodgers, Manche, Cannon, Wood

Welcome back to nine active members. Things start happening. Greetings to sister Gamma Sigs. Reorganization in full swing. First meeting at Pick-Ohio. Alumna showing up "en toto." Plans for rushing smoker at the Ohio. Joint rush party with Gamma Sigs at Mahoning Country Club. Final stag party at Cascades. Fifteen pledges added to group. Rebirth of "Sig Delt." Who is the Phantom? Unusual pledge pins. Prexy Gene ruling with iron hand in velvet glove. Golden voiced Raggozine. Exciting bowling games with other frats. Baseball games with Kappa Sigs. Weiner roast with Phi Lambs. That well-dressed Kalivas boy. Book drive in support of Youngstown College Library. "Pappy" Boyd playing farmer. Shoe-shines by pledges. Mad initiations. Ed Rose giving Byron Nelson competition. "The Prince of Wales has lost his hat." Friendly Jack Maikrantz. Big dance by the Sig Delt's at the Elms. Ted Cubbison editing "The Sig Delt." Annual spring formal. Sheffield dancing with his good looking wife. End of season with dinner dance. Big things in the past. Bigger things to come.

MEMBERS

1946

Bill Valentine
Hiram Walker

1947

Ted Cubbison
George Kalivas
William Palmer
Gene Planchak
Tony Ragozzine

1948

Ed Rose
Charles Slavin
Loring Sheffield

1949

Thomas Allen
James Battaforano
Robert Boyd
James Cannon
Tony Davanzo

Robert Ellis
Joe Greene
Sims Hardy
Bill Jacobs
Robert Kingston
Jack Maikrantz
Tom Manche
Duane Rodgers
Charles Sabino
Charles Thomas
George Woods



Front Row—Rose
Back Row—Ragozzine, Sheffield, Planchak

OFFICERS

President Gene Planchak
 Vice President Anthony Ragozzine
 Secretary Edward Rose
 Treasurer Loring Sheffield



Pledges shining actives' shoes. Shoe shine kit and polish. Era of initiation. Ed Rose and Loring Sheffield reveling in the glory of being actives.



The campus as a backdrop. Walking all over town for some film—And hoarding it for "big" events. Grins that please.

Symbolizing the Greek Honors



Phi Lambda Delta



Gamma Sigma



Phi Sigma Epsilon



Alpha Theta Delta



Sigma Delta Beta



Kappa Sigma Kappa



Phi Gamma



In Regal Splendor



Snowflake Frolic Queen



MARIAN PAGLIASOTTI
Alpha Theta Delta
Sophomore

"She walks in beauty. Starlight, starbright. Illustrations by Jon Whitcomb."

Pan-Hellenic Sweetheart



LOLA RAPTOU
Phi Lambda Delta
Junior

"From the pages of Mademoiselle. A spray of white orchids on Easter Morning. The rustle of silk."

Mardi Gras Queen



PHYLLIS GRIEM
Alpha Theta Delta
Sophomore

"Polka dots and moonbeams.
Cherry tarts with whipped
cream. The promise of spring."

Junior Prom Queen



MARGY NICEWANER
Alpha Theta Delta
Junior

"Miss Laughing - Eyes. Dependability. In the land of the sky blue waters."

May Queen



JUNE GRIMSLEY
Alpha Theta Delta
Senior

"There's magic in a smile.
Portrait of an American co-ed.
Symphony."

Business Organizations



Alpha Iota



2nd Row—Mrs. Pilz, Mrs. Hanna, Hainley, Cianciola, Baker, Brownlee, Hanna, Schall, Watson, Hays
1st Row—Davies, Guyer, Findley, Oakes, Werdon, Gwin, Taylor, Turner, O'Brien

White collar girls. Tomorrow's secretaries. Picnic at Firestone with Tau Kappa Nu. Skirt and sweater mix. The fun of rushing. Traditional corsages of white baby mums and red roses. Dinners at the Navy Club. Seeing "Claudia" at the Playhouse. Roller skating parties. Initiation. Crazy clothes and stunts. Formal dinner-dance at the Mahoning Country Club.



E. Davies, N. Hayes, P. Guyer

OFFICERS

- President Bonnie Griffiths
- Vice President Eleanor Davies
- Secretary Peggy Guyer
- Treasurer Nancy Hays
- Historian Alyce Turner
- Pledge Captain Betty O'Brien
- Marshall June Findley
- Chaplain Jeanne Werdon
- Advisors Mrs. Robert Hanna
Mrs. Dale Pilz

Tau Kappa Nu



Left to right—Goers, George, Rutkowski, Mrs. Gettman, Alexander, Aurlio, De Main, Gamarale, Rossi, Anthony, Kolesar, Buresti, Calderone, Novotny, Bradley, Biviano, Fedyna, Tirlea

More of tomorrow's secretaries. Initiation of new pledges. Gardenias. Banquet at Youngstown Grill. Christmas party with gift exchange. Trip to Cleveland to see Ice Follies. Valentine Sweetheart Dance. Rush party at the Dinner Bell. Dinner at Pick-Ohio. Trip to Pittsburgh. St. Patrick's Day party. Shamrocks for favors. Going-Places party. Miniature suit cases. May formal at the Mahoning Country Club.



OFFICERS

President Rose Fedyna
 Vice President Mary Lou Hura
 Secretary Helen DeMain
 Treasurer Julia Aurilio
 Advisor Mrs. Homer Gettman

Aurilio, Mrs. Gettman, De Main, Fedyna

Gessner Law Club



Starting from Ivis Boyer, reading clockwise Raymond Falls, Dean of Law School, Edward C. Greenamyre, Elton Wagner Luckhart, Robert L. Tatman, Henry Church, Assistant Professor, Pauline Church, Leo W. Daff, C. H. Nelson, Robert M. McCracken, Michael R. Yatsko, Robert A. Seidner, Robert W. McKay, Carl J. Rosapepe, Robert J. Thomas, John D. Hughes, Jack B. Jones, Robert S. Hartford, John C. Thorne, James P. Coyle.

Open to all members of the law school. Monthly meetings with attorneys as speakers: Robert B. Nevin, John Bauchnecht, G. L. Patterson, and Franklin B. Powers. Holding discussions. The annual banquet at the Pick-Ohio in December. Active interests in cases of law in the city.



OFFICERS

- President Robert L. Tatman
- Vice President Robert J. Thomas
- Secretary Ivis Boyer
- Treasurer Edward C. Greenamyre

Standing: President Robert Tatman
Treasurer: Edward Greenamyre

Seated: Robert Thomas, Vice President
Ivis Boyer, Secretary

Eta Delta Sigma



Social sorority for women in night school. Hallowe'en Party in Room 303. Christmas Party at Lincoln Hotel. Anniversary Dinner at Dinner Bell. Presenting Victory Bond to YoCo. Library Fund. Appointing Board Managers: Margaret Mahrer, C. Marie Fawcett, Golda Kilpatrick, and Mrs. Charles Gibson. Singing Irish songs at St. Patrick's Day party. Election of officers. Initiating new members. Annual picnic and corn roast. Making plans for summer activities.



Left to right—Dahlgren, Murphy

OFFICERS

President Mary C. Murphy
 1st Vice President Patricia Dahlgren
 2nd Vice President Matilda Menning
 Rec. Secretary Mary Ferguson
 Corres. Secretary .. Elizabeth Lawmiller
 Treasurer Winifred Bossert

Sigma Kappa Phi



First Row: D. Dilworth, A. Brown, C. Mikkelson, F. Schaffer, F. Fortunato, J. Lewis, J. Ritter
 Second Row: A. Keesecker, L. Seger, J. Warren, W. Weinman, J. Semon, J. Semon, J. Koczur, L. Hammond,
 H. Smith
 Third Row: D. Mirto, L. Damore, P. Berndt, D. Lloyd, A. Hunsinger, B. Pearce, A. Coder, R. Lowery,
 F. Dreher, J. Herrlich
 Fourth Row: A. Hennon, J. Cozza, G. Ault, W. Bossick, M. Yourga, A. Tielhet, J. Rudibaugh, E. Sonne,
 H. Bowmaster, J. Wampler, W. Bugbee, H. Schmidt, A. Barber, J. Monahan
 Fifth Row: R. Frew, D. Shook, E. Burgeson, R. Dillon, J. Jeren, L. Heacock, F. Hernan, S. Brown,
 J. MacIntosh, H. Kennedy, D. Stewart, A. Baldwin, P. Johnson, T. Higgins

Night school fraternity for men in business administration. Extending membership and activities. Robert Frew, representative of Board of Governors. Noted guests including Dr. Howard Jones, Attorney Franklin B. Powers, Judge Clifford Woodside, and Lindley Vickers, Mill Creek Park Naturalist. Touring the Continental Baking Company's plant. Picnic at Firestone Park. Hallowe'en party at the Dinner Bell. Honoring wives and sweethearts at a Sweetheart Dance. Annual dinner-dance.



OFFICERS

President Jack Ritter
 Vice President Albert Teilhet
 Secretary Fred Shaffer
 Treasurer Leonard Hammond

Seated: Tielhet, Ritter, Schaffer
 Standing: Frew, Hammond

Athletics

BACK AGAIN,
FOOTBALL!

DAY AFTER FIRST
PRACTICE



Football



Dwight "Dyke" Beede, Head Coach

Looking forward to another semester of football—after four long years. Football practice. Trying out for the team. Practicing to live up to a high previous record of wins, and more of the same.

Looking forward too, to another year of an all-around year of college athletics. Basketball, baseball, and tennis. Going back to a Youngstown College of lettermen—wearing their sweaters with well-earned letters. And wearing them proud.



Dominic Roselli



Ralph Wolfe



Willard Webster

1946 Football Schedule

*Thursday	Sept. 19	Geneva College at Youngstown
Saturday	Sept. 28	St. Bonaventure College at St. Bonaventure, N. Y.
*Friday	Oct. 4	Western Reserve at Youngstown
Saturday	Oct. 12	Open
Saturday	Oct. 19	St. Vincent College at Youngstown
Saturday	Oct. 26	Lebanon Valley College at Hershey, Penna.
Homecoming—Afternoon		
Saturday	Nov. 2	Scranton University at Youngstown
Saturday	Nov. 9	Morris Harvey at Youngstown
*Friday	Nov. 15	Waynesburg College at Youngstown

* Night games.

"And Then There Were None"

Autographs



Best of Success to the Class of "46"

RICHMOND MOTORS



Opposite Ohio Hotel

For that Special Date!

Flowers From

Crishal's Flowers

1388 Belmont Ave.

Phone 4-2914
7-4396

Boost your North Side

GLAROS HARDWARE

Be Civic Minded

1712 Belmont Ave.

Ph. 3-6144

Hardware Needs

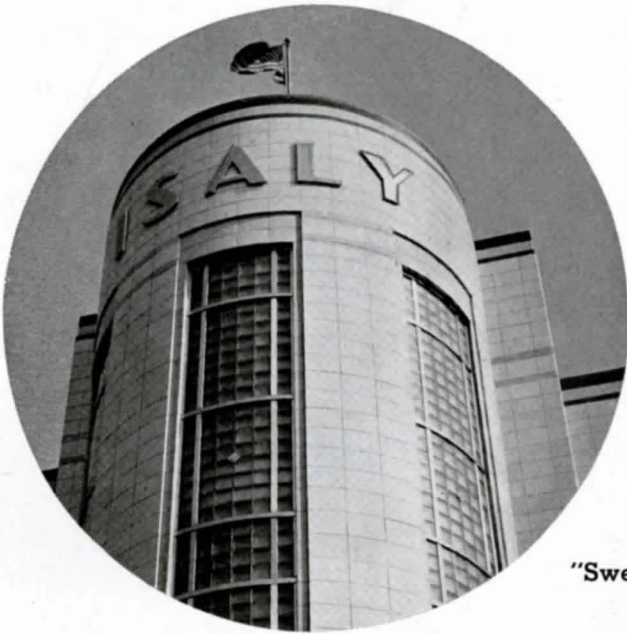
Sherwin-Williams Paints

Appliances — Pipe — Glass

Prompt Delivery

Our First Thought Is Quality

Our Second Thought Is to Please You



When you see
An Isaly sign
And for Ice Cream
Begin to pine
You'll want again
To spend a dime
For that one treat
That's just sublime
The treat that thrills
You every time.



"Sweeten Each Day the Isaly Way"

We Are Proud of the SEALTEST Name



Sealtest
ICE CREAM
AND
DAIRY PRODUCTS



When you buy Milk and Ice Cream, don't overlook the advantages of SEALTEST QUALITY CONTROLS—and our own scientific SEALTEST LABORATORY SUPERVISION. They safeguard the purity and delicious flavor of SEALTEST MILK AND ICE CREAM.

Telephone 3-2161

The Youngstown Sanitary Milk Company

715 Erie Street

Youngstown, Ohio

Compliments of

THE WILLIAM B. POLLOCK COMPANY

Steel Plate Construction - Engineers - Fabricators - Erectors

Youngstown, Ohio



“BILL DUNN”

Your Studebaker Dealer

2023 Market Street

Youngstown, Ohio

Compliments of



GEO. L. STOWE

Carburetor and Ignition Service

STROMBERG CARBURETORS

Sales and Service

Martin J. Allshouse

PENNZOIL STATION

1000 Wick Avenue

Youngstown, Ohio

JAMES E. MODARELLI

BUCKEYE TIME SERVICE

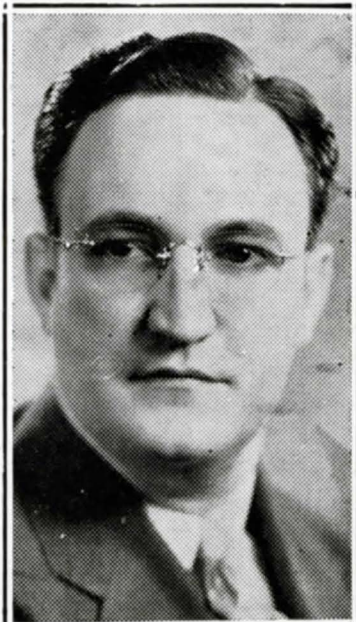
Watch & Clock Repair

Authorized Service Station for
Telechron & General Electric Clocks

504 Dollar Bank Bldg.

Phone 37147

Youngstown, Ohio



CHARLES SIMONS, Inc.

2220 Market St.
BPS Paint and Wallpaper

Compliments
of
MATTHEW'S
Men and Boys

2703 Market St.
Corner of Indianola

Always Tops In Style
Always Tops In Quality

Our Very Best Wishes
Go To
THE STUDENTS AND FACULTY
of
YOUNGSTOWN COLLEGE
Through the Years

Cooksey Coal Service Co.
"Your Friendly Coal Dealer"

Williamson Ave. Ext. Youngstown, O.

Compliments of
The Felix Pesa & Sons Co.
GENERAL CONTRACTORS

Youngstown, Ohio

Compliments of
La France
Dry Cleaners

Compliments

Road of Remembrance

Post No. 472

American Legion

649½ Market St.

Youngstown, Ohio

The Murray Studio

PICK-OHIO HOTEL

We Teach

Fox Trot, Jitterbug, Rumba

Waltz, Samba, Tango

PARAMOUNT GRILLE
LUNCHEONS DINNERS

OPEN EVERY DAY
Except Mondays
Serving

Daily Luncheons **40¢**
Evenings and Sundays CHICKEN DINNERS.. **65¢**

Try Our Home Made
Ice Cream to Take Out
1410 BELMONT AVE.
COR. FAIRGREEN



The DINNER BELL
South Side's Finest Restaurant - 2712 Market St.

Open at 6:30 A. M. for Breakfast

Complete Sunday Full Course Dinners

NOONDAY LUNCHEONS AND EVENING DINNERS

Upstairs Peacock Room available for private parties up to 200 people.

Phone 8-0057 for Reservations

PARTY at Our PEACOCK ROOM



Best Wishes to the Class of '46

BARTON HEATING COMPANY

Furnaces, Air Conditioning, Roofing, Spouting

488 Glenwood Avenue

Youngstown, Ohio

Phone 3-0894

EAT

AT

RAVERS

TAVERN

8 West Boardman St.

Best Wishes from

Youngstown

Steel Tank Co.

Congratulations to "The Class of '46"

THORNTON'S

QUALITY

LAUNDRY

DRY CLEANING

FURRIERS

Brave New World!

You're the lucky ones, you Class of '46. You graduate into a world in which the deadly chatter of machine guns has given way to the hopeful conversation of the peace tables. A brave new world has been born. Today it's an infant, blind, and helpless, but innately sturdy, lusty and courageous. Your generation must assume the responsibility for its growth and development. If you shoulder your international responsibilities intelligently, this infant will become a haven for mankind. If you shrug off your international responsibilities, it will become the scene of Man's destruction. It's up to you! Choose!

McKELVEY'S

1883-1946

Keep Your Eye on the Ball
(the Big Round World!)

This old planet of ours will stand a lot of watching and study. Naturally you're among those who will want to know what it is all about and who will do everything possible to make our "one world" a better world.

Best Wishes, Seniors of '46!

STROUSS-HIRSHBERG'S

EVERYTHING ELECTRICAL FOR THE HOME

Radios—Refrigerators—Sweepers—Washers—Etc.

For Your Auto—Gas, Oil, Lubrication and Complete Line of Accessories

YOUNGSTOWN APPLIANCE AND SUPPLY CO.

728 Wilson Ave.

Youngstown, Ohio

Phone 7-3316

Best Wishes to the
Class of "46"

A. F. BEIL ELECTRIC CO.

Youngstown, Ohio

THE WILKOFF CO.

1609 Wilson Ave.

STEEL

Hot and cold rolled strip and sheets
Plates and structural steel sheared to your specifications
Pickling facilities

Greetings and Congratulations to
The Youngstown College Class of 1946

THE OHIO LEATHER COMPANY

Girard, Ohio

Compliments of

**COMMERCIAL SHEARING & STAMPING
COMPANY**

Best Wishes to the

Class of "46"

**DIAMOND
STEEL CONSTRUCTION
COMPANY**

Youngstown, Ohio

Congratulations to the

Class of 1946

KENNETH KLEIN

PHOTOGRAPHER

1302 Market Street

Dial 3-5454

For CHEVROLET CARS and TRUCKS

For Late Model USED CARS and TRUCKS

For Complete Body and Fender Work

For Painting—Touch up or Complete Job

For Parts and Accessories

See us

Steel City Chevrolet Company

2519 Market Street

Youngstown, Ohio

JOHN WARD

The Home of
NUNN-BUSH SHOES

2710 Market Street

H U M E ' S

Youngstown's Two Dependable
Furniture Stores

252 W. Federal St.

2930 Market St.

Nature's Own Health Drink

**Wheeler's Mineral
Spring Water**

Also Manufacturers of
TAYSTE LUNCH POTATO CHIPS
and
OKE-DOKE (CHEEZ'D POPCORN)

Phone 3-6710

Address—107 N. Hine St.
Youngstown, Ohio

City Radio Co.

Prompt, Dependable Service

Home and Auto

SALES AND SERVICE

Wick and Broadway

Ph. 3-6123

FOR TOPS IN NEWS — SPORTS —
MUSIC AND ENTERTAINMENT



1450 ON YOUR DIAL

“Youngstown’s Radio Center”

Congratulations Graduates

**THE ELMS
BALLROOM**

529 Elm Street

Phone 7-8184

L. A. CAVALIER, JR., Manager

**Make this store your headquarters for
hardware, sports and household needs**

**The Stambaugh-
Thompson Co.**

114 W. Federal St.

2625 Market St.

1652 Mahoning Ave.

100th Anniversary in 1946

For the Finest Selection of
Classical and Popular Records

Visit the

RECORD DEPARTMENT

at

Ben's Modern Appliances

2664 Glenwood, cor. Indianola

Open Every Evening

Ph. 2-8195

Compliments to the Class of 1946

Triangle Music Co.

2624 Market St.

Youngstown, Ohio

Ph. 2-1012

Personal Attention Given

Flowers for All Occasions

Artistic Arrangements in Corsages

HARRY C. WALTHER

22 W. Wood
Youngstown, Ohio

Compliments

of

College Sunoco Service

405 Wick Ave. Youngstown, Ohio

KRUPKE'S

2734 Market St.

**Coats, Suits and Dresses
Blouses and Skirts**

Store Hrs. 9:30 A.M. to 9 P.M.

Ph. 2-6815

Phone 4-0714

Carosella's Grill

Famous for Fine Foods

1224 Market St. Youngstown, Ohio

FEET HURT?

We carry a complete line of Dr.
Scholl's Arches & Remedies

Scientifically Fitted

CARL N. BUCHMAN

FOOT COMFORT SHOP

9-11 Bus Arcade
Youngstown, Ohio

Schaefer Music Shoppe

Musical Instruments — Accessories

409-10-11-12 Keith-Albee Bldg.
Youngstown, Ohio

Phone 3-4605

Res. 7-7687

Guaranteed Instrument Repairing

C. J. Little and Son

Plumbing and Heating

236 North Phelps
Youngstown, Ohio

Best Wishes to the

Class of 1946

City Office and Art Co.

36 West Wood at Phelps

Youngstown, Ohio

Geo. F. Kolesar and Robert O. Lewis
Owners

DONNELL'S

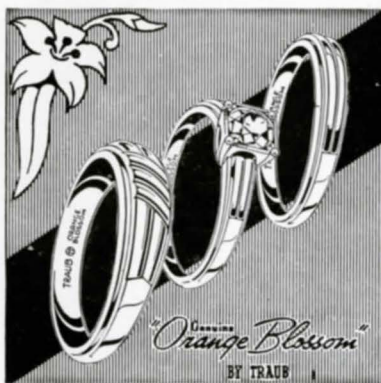


MERCURY

1811 Market St.

SET YOUR
STANDARDS HIGH

In all things, there is no substitute for quality and perfection. Before you choose a diamond drop in and let us explain how they differ in quality. There is no obligation.



RAYMOND BRENNER

JEWELER

W. Federal at Hazel

Headquarters for Youngstown College Rings

