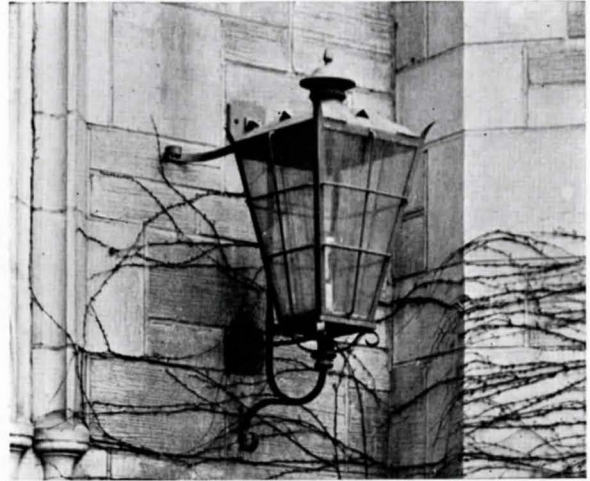


1 9 4 4

*As You  
Remember*



NEON

The real YoCo that was and is will never change. YoCo is a growing spirit, hazy and intangible as the morning mist.

It is sensed in the timelessness of the rock, in the peacefulness of the chapel. It is found in the corridors, in the social gatherings, in the class rooms. It is embodied in the figure of Prexy. We inherit this spirit, perpetual in its being AS YOU REMEMBER.

**EIGHTEENTH VOLUME**  
**Published by Senior Class**  
of  
**YOUNGSTOWN COLLEGE**

# **A Message From The President**

To those students who have chosen to strengthen the national cultures which are the soul of the people; and to those who are strengthening the international cultures which may some day be the soul of a decent world, as well as, to those who now wear the khaki and the blue in that heroic world struggle for a new order, we voice a word of appreciation.

**PRESIDENT HOWARD W. JONES, D. Ped.**



This, the Neon of 1944, is dedicated to the future of Youngstown College and to the spirit of which it is symbolic. May the post-war YoCo continue in its earnest striving toward that goal of true education.

# Youngstown College Service Men Who Were Killed or Died in Service

Dedicated to those once in our midst, who have given their lives so that others may wander down YoCo's Halls of Learning.



Robert Baugh  
Charles H. Brown  
William Richard Curl  
Robert C. Dupola  
Haven Grover

Harold H. Henderson  
John P. Hudack  
Ralph E. Johnston  
William J. Johnston  
Robert W. Landis  
Ray E. Ward

William F. Litvin  
Paul Lynne  
Andrew Melek  
Anthony Piccolo  
Victor L. Ramsey  
Robert F. Weber







"A thing of beauty is a joy forever"—Keats



"The sight of such a building is like a ceaseless changeless melody"—Ruskin.





"For wheresoe'er I looked, the while,  
Was Nature's everlasting smile." —Bryant.

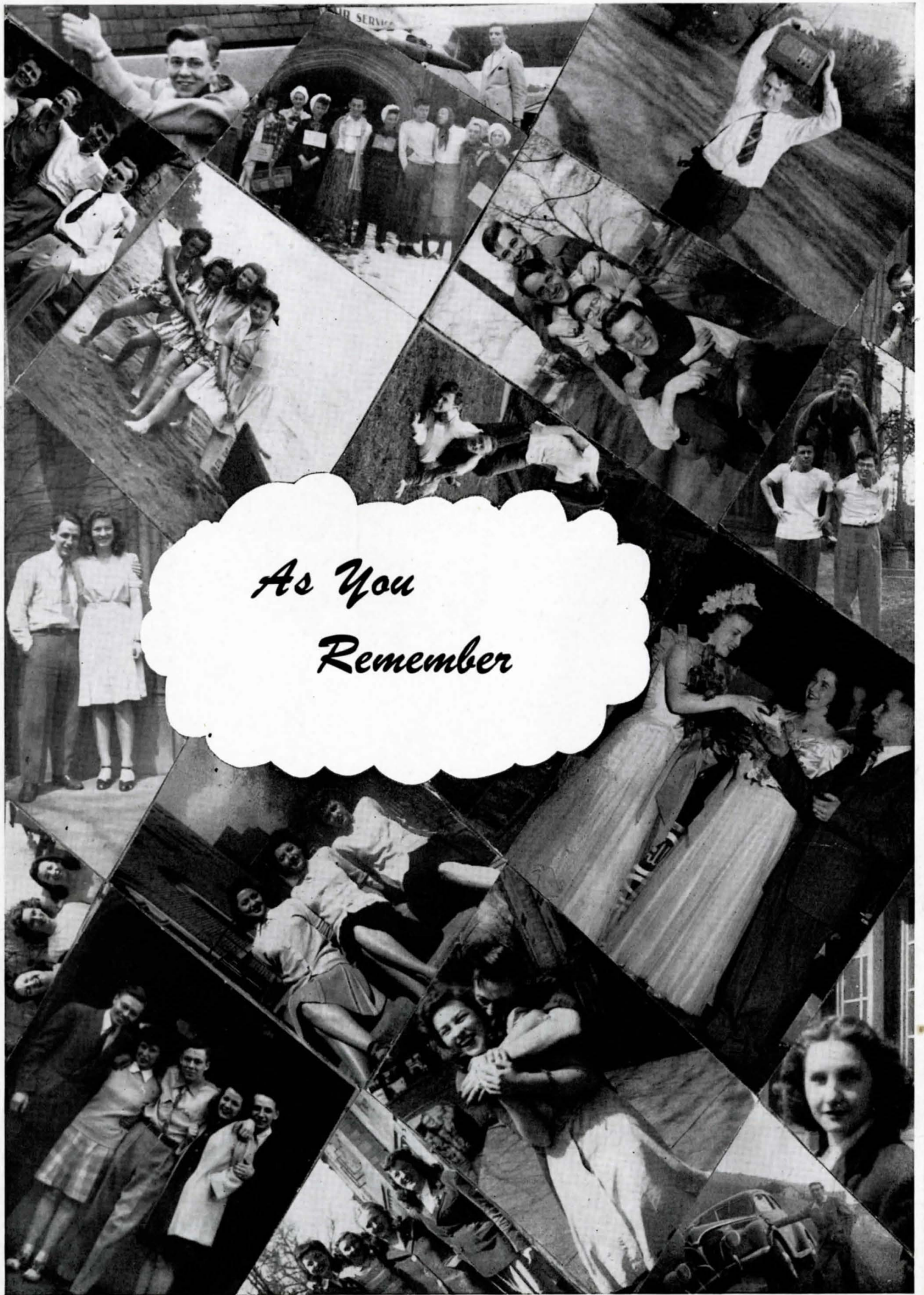
# The Faculty

- Howard W. Jones, D. Ped., President  
John F. Allison, M.B.A., Business Adm.  
Dwight L. Arnold, Ph.D., Education  
Theodore Baar, Piano, Violoncello, Double Bass  
John W. Bare, A.M., Psychology  
Walter Bartz, Photography  
John R. Bell, M.Ed., Accounting  
Karl H. Benkner, M.E. Engineering Drawing  
Catherine M. Bridgham, Ph.D., Chemistry  
Maurine Brunner, A.M., Library Science  
P. P. Buchanan, M.Ed., Sociology  
Russell G. Bunn, A.B., Speech  
William H. Bunn, M.D., F.A.C.P., Lecturer in Biology  
Harold N. Burt, B.D., Philosophy  
Stella Cassano, A.M., English  
Frieda F. Chapman, A.M., Elementary Ed.  
J. D. Cook, D.Mus., Clarinet  
Louis A. Deesz, E.E., Engineering  
Nellie G. Dehnhostel, M.Mus., Music Theory  
Christine Rhoades Dykema, A.B., French  
Karl W. Dykema, A.M., English  
Margaret Evans, B.S., Art  
David H. Everest, B.S. in Indus. Engr., Engineering Drawing  
Mary E. Fankhauser, A.M., Piano  
Roy R. Fellers, LL.B., Public Speaking  
Castle W. Foard, Ph.D., Math. and Physics  
Giuseppe Gentile, B.S. in C.E., Music  
John Gillespie, Advertising  
Clarence P. Gould, Ph.D., Social Science  
Kathryn T. Guarnieri, M.Mus., Voice  
Arnold Hoffman, A.M., Flute and Public School Music  
Donald W. Hurrelbrink, M.Mus., Brass Instruments  
E. W. Hykes, B.S., Accounting  
Norman W. Igo, B.S., Salesmanship  
Harley M. Littler, A.M., Physical Education  
Edith Johnson McKissock, A.M., Mathematics  
Raymond E. Meiners, B.S., Accounting  
D. Roy Mellon, B.S., Chem. and Bacteriology  
Herman E. Muller, Jr., B.S. in M.E., Physics  
Alvin Myerovich, B.S. in Ed., Violin  
F. John Naples, Ph.D., Chemistry  
Oscar W. Pannier, B.P.E., Physical Education  
Viola M. Paroz, A.M., Home Economics  
P. Calvin Pickard, A.B., Accounting  
Robert L. Piercy, A.B., M.D., Mathematics  
O. L. Reid, A.M., English  
Helen Rein, B.S., Nursing Education  
Leonard T. Richardson, Docteur de l'Universite, Languages  
Jay Rodkey, A.B.A., Accounting  
P. J. Ross, Jr., A.M. Political Science  
Jacob Schmitt, D.Mus., Piano  
Eugene Dodd Scudder, Ph.D., Chemistry  
Catherine Berg Semans, A.M., Psychology  
Joseph Earl Smith, Ph.D., Social Science  
Margaret E. Stage, B.S. in Ed., Physical Education  
Henry V. Stearns, D.Ped., Piano, Organ, Advanced Music Theory  
H. Ross Strohecker, B.S. in M.E., Plastics  
J. Trantin, Jr., B.S. in Chem. E., Applied Science  
R. A. Waldron, Ph.D., Science  
John Wampler, B. Ed., Accounting  
Jean Campbell Webb, B.S., Art  
Willard L. Webster, B.S., Biology  
H. C. Welch, B.S., Mathematics  
Ruth P. Whittington, B.S., Physical Education  
George M. Wilcox, Ph.D., Education  
A. L. Wilhoite, M.E., Engineering

# Administration

## OFFICERS OF ADMINISTRATION

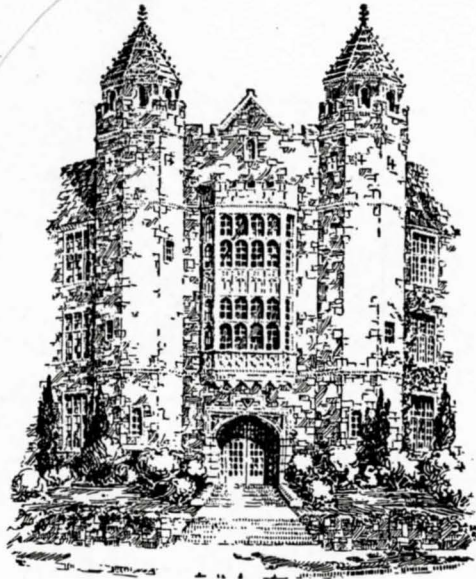
Howard W. Jones, D. Ped.	- - - - -	President
George M. Wilcox, Ph. D.	- - - - -	Dean of the College
Catherine Berg Semans, A. M.	- - - - -	Dean of Women
Joseph Earl Smith, Ph. D.	- - - - -	Dean of Men
Raymond L. Falls, LL. B.	- - - - -	Dean of Law
John F. Allison, M. B. A.	- - -	Dean of Business Administration
Louis A. Deesz, E. E.	- - - - -	Dean of Engineering
Arnold E. Hoffman, A. M.	- -	Director, The Dana Musical Institute
Philip P. Buchanan, M. Ed.	- - - - -	Registrar
P. Calvin Pickard, A. B.	- - - - -	Business Manager
Freda R. Flint, A. B.	- - - - -	Director of Public Relations
Maurine Brunner, A. M.	- - - - -	Librarian
Marjorie L. Campbell, B. S. in L. S.	- - - - -	Associate Librarian
Ruth Robison Gessner	- - - - -	Secretary to the President
Helen Walker Lyon	- - - - -	Cashier
Mary Boyer Smith, A. B.	- - - - -	Assistant Registrar
Marguerite Friedrich, A. B.	- -	Associate Director of Public Relations
Elizabeth Lipply	- - - - -	Secretary to the Business Manager
Margaret Boyer, A. B.	- - - - -	Office Secretary
Lillian Cole	- - - - -	Assistant Auditor



*As You  
Remember*

COLLEGE OF ARTS AND SCIENCES

*As You Remember*



**DEANS**

of

**THE COLLEGE OF ARTS AND SCIENCES**

DEAN OF THE COLLEGE  
George M. Wilcox, Ph. D.

DEAN OF MEN  
Joseph Earl Smith, Ph. D.

DEAN OF WOMEN  
Catherine Berg Semans, A. M.

DEAN OF BUSINESS ADMINISTRATION  
John Allison, M. B. A.

DEAN OF THE ENGINEERING SCHOOL  
Louis Deesz, E. E.

DEAN OF DANA MUSICAL INSTITUTE  
Arnold Hoffman, A. M.

COLLEGE OF ARTS AND SCIENCES

**Seniors**



K. Sullivan

H. De Cicco

S. Hull

M. Riddle

**OFFICERS**

- Kathryn Sullivan - - - - President
- Helen DeCicco - - - Vice President
- Sally Hull - - - - - Secretary
- Mary Riddle - - - - - Treasurer

Memories of our last year at college....Majority of our men in the service....Getting the Neon to press....Our own yearbook....Plans for graduation....Pictures at Chesshire's....Lists of senior activities....Members in Who's Who....Delta Epsilon....Honorary Fraternities....The May prom and May Day festivities....Our May Queen....President....Senior banquet at Raver's....Graduation....Finis to college days.

# COLLEGE OF ARTS AND SCIENCES

## Ensign Paul Atkinson

Bachelor of Science  
Chemistry

Phi Epsilon; Baldwin-Wal-  
lace Navy V-12.



## Anita Marie Carson

B. S. in Education  
Music

Sigma Alpha Iota; Choir;  
Chorus; Opera; Music; Co-  
Chairman of May Day



## Elizabeth Ausnehmer

Bachelor of Arts  
Mathematics

Band; Orchestra; W.A.A.;  
Religion in Life.



## Mary Vanusek Cifra

Bachelor of Science  
Nursing  
Eta Delta Sigma, Treasurer.



## Mary Bowser

B. S. in Education  
Music

Sigma Alpha Iota; Chorus;  
Choir; Religion in Life; Op-  
era.



## Ensign Joseph Costarella

B. S. in Education  
Music

Student Council, Treasurer;  
Alpha Psi Omega; Play Cast;  
Opera Cast; Religion in Life;  
Music Club; Orchestra; Band;  
Chorus; Choir; Mimes.



## Leonard P. Caccamo

Bachelor of Science  
Biology

Delta Epsilon; Who's Who;  
Omicron Lambda, Treasurer;  
Student Council; Circulation  
Manager, Neon; Biology As-  
sistantship; Newman Club;  
Band; F.E.E.C.; May Day  
Committee; Case Band.



## Dina De Blasio

Bachelor of Arts  
Modern Languages

Alpha Psi Omega; Sigma  
Tau Delta; Neon Publicity  
Director; Jambor Staff; War  
Finance Committee, Chair-  
man; Student Council; Snow  
Flake Frolic Attendant;  
Speech Society, Secretary and  
V. President; Chorus; Choir;  
Freshman Breakfast Chair-  
man; May Queen Candidate;  
May Day Committee; Play  
Cast.



# COLLEGE OF ARTS AND SCIENCES

## Helen DeCicco

Bachelor of Arts  
French

May Day Pageant; Chapel Choir; Opera Cast; Mimes; Homecoming Queen Attendant; Interfraternity Sweetheart; Junior Prom Attendant; Pan-Hellenic Council; Phi Lambda Delta, President, Secretary; Snow Flake Frolic Attendant; Senior Class, Vice President; Delta Epsilon; Play Cast; Co-Chairman of May Day.



## Katherine J. Gallagher

Bachelor of Science  
Nursing

Eta Delta Sigma.



## Marie L. De Molli

Bachelor of Arts  
Modern Languages

Who's Who; Delta Epsilon; Neon Co-editor; Sigma Tau Delta, Secretary, Treasurer; Alpha Theta Delta, Secretary; Jambor Circulation Manager; Homecoming Queen Candidate; Junior Prom Queen Candidate; Interfraternity Prom Attendant; Interfraternity Council; Sophomore Class Secretary; Newman Club; International Relations; May Day Committee; Junior Prom Committee.



## Leota Hunter Gibson

Bachelor of Arts  
English

Eta Delta Sigma, President; Neon Circulation Staff; Sigma Tau Delta; Delta Epsilon; International Relations; May Day Committee.



## Samuel L. Deutsch

Bachelor of Arts  
Chemistry

Phi Epsilon, Secretary-Treasurer.



## Blanche Mary Guinagh

Bachelor of Science  
Nursing

Eta Delta Sigma.



## Edward Louis DiCola

Bachelor of Arts  
Pre-Medical

Omicron Lambda; Phi Sigma Epsilon; Cheerleader; International Relations.



## John G. Guju

Bachelor of Arts  
Biology

Delta Epsilon; Who's Who; Omicron Lambda, President; Student Council; Neon Business Manager; Neon Advertising Manager; War Finance Committee, Financial Chairman; Jambor Staff; Biology Assistantship; Pre-Medical Club; F. E. E. C.; May Day Committee; Snow Flake Frolic Committee.





# COLLEGE OF ARTS AND SCIENCES

## Sarah Hagerty

Bachelor of Science  
Nursing

Registered Nurse; Omicron  
Lambda.



## Margit Hultman

B. S. in Education  
Elementary Education

E.T.P.C.; Mimes; Alpha Psi  
Omega; Play Cast; Jambar  
Staff;

## Donald Hart

Bachelor of Science  
Chemistry

Delta Epsilon; Phi Epsilon,  
Secretary; Newman Club; Phi  
Sigma Epsilon.



## Naomi V. Joerndt

B. S. in Education  
Physical Education

W.A.A.; Religion in Life;  
Omicron Lambda; Mimes;  
Homecoming Queen Candi-  
date; Junior Prom Queen  
Candidate; Junior Class Vice  
President; Eta Delta Sigma.

## Kathryn Hatch

B. S. in Education  
Music

Gamma Sigma; Band; Or-  
chestra; Chorus; Religion in  
Life; Opera; Music Club.



## Donna Jean Kuhlman

Bachelor of Arts  
Mathematics

Alpha Theta Delta, Corres-  
ponding Secretary; Chairman  
of Snow Flake Frolic; Junior  
Class Treasurer; Student  
Council, Vice President; Who's  
Who; Religion in Life; Con-  
trol Committee for Junior  
Prom.

## Sally Hull

B. S. in Education  
Elementary Education

Neon Co-editor; Class Edi-  
tor, Neon; Alpha Theta Delta;  
E.T.P.C., Secretary; Religion  
in Life, Secretary; Mimes,  
Secretary; Opera Cast; Choir;  
Chorus; International Rela-  
tions; Senior Class Secretary;  
Play Cast; F.E.E.C.; Student  
Council; Junior Prom Com-  
mittee; May Day Committee.



## Irene Liptak

B. S. in Education  
Elementary Education

E. T. P. C.

COLLEGE OF ARTS AND SCIENCES

**Sarah Lee Longo**

B. S. in Education  
Elementary Education  
E. T. P. C.



**Gerald Nummi**

B. S. in Education  
Music  
Delta Epsilon; Orchestra;  
Band; Religion in Life.

**Rina McKinney**

B. S. in Education  
Elementary Education  
E. T. P. C.



**Lucille H. Owens**

B. S. in Education  
Elementary Education

**Dorothy Meikle**

B. S. in Education  
Elementary Education

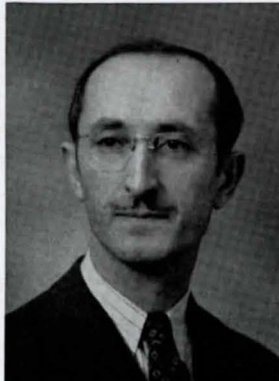


**Eli L. Pacetti**

B. S. in Education  
Music  
Band; Orchestra.

**Matilda Elvira Menning**

Bachelor of Arts  
Social Sciences  
Eta Delta Sigma



**James Peirlo**

B. S. in Education  
Romance Languages

COLLEGE OF ARTS AND SCIENCES

**Norma Poorman**

Bachelor of Music  
Piano

Sigma Alpha Iota, President; Band; Orchestra; Music Club; Religion in Life; Delta Epsilon.



**Marie Houndyshell Snyder**

B. S. in Education  
Education



**Mabel Prior**

B. S. in Education  
Elementary Education

Delta Epsilon; Alpha Psi Omega; E.T.P.C.; Mimes.



**Cornelia Anna Stoia**

B. S. in Education  
Elementary Education



**Mary Jane Quirk**

B. S. in Education  
Health Education

Eta Delta Sigma; Class Ring Committee.



**Kathryn Ann Sullivan**

B. S. in Education  
Elementary Education

Senior Class President; Newman Club; Phi Lambda Delta, Corresponding Secretary; Delta Epsilon; E.T.P.C., Vice President; Mimes, Vice President; Who's Who; Neon Staff; Jambar Staff; Student Council; Opera; Choir; Chorus; May Queen.



**Mary Riddle**

B. S. in Education  
Secretarial Studies

Miami University; Y. W. C. A.; W. A. A.; Zeta Tau Alpha, V. President; Youngstown College—Counsellor of Buechner Hall; Gamma Sigma; International Relations, V. President, Corresponding Secretary; Senior Class Treasurer; Photography Director of Neon; May Queen Candidate.



**Etheleda Szalma**

B. S. in Education  
Music

Sigma Alpha Iota; W.A.A.; Play Cast; Opera; Chorus; Choir.



COLLEGE OF ARTS AND SCIENCES

**Frank Anthony Tedde**

Bachelor of Science  
Chemistry  
May Day Committee.



**Joachim E. Vouros**

B. S. in Education  
Social Sciences  
Phi Sigma Epsilon; Inter-  
national Relations.



**Jeanne Kolmorgan Weitz**

B. S. in Education  
Art  
Alpha Psi Omega; Delta  
Epsilon; Phi Lambda Delta;  
Jambar Staff.

# COLLEGE OF ARTS AND SCIENCES

**Fred Arthur Bates**

Bachelor of Arts

**Olga Bayowiski**

Bachelor of Science in Education

**Ethel Bingham**

Bachelor of Science in Education

**Ethel Mae Burt**

Bachelor of Science in Education

**Elaine Hahn Dorrington**

Bachelor of Science in Education

**Hazel Viola Fair**

Bachelor of Science in Education

**Margaret Regina Fleps**

Bachelor of Science in Education

**Robert John Frech**

Bachelor of Science

**Pearl Edith Gates**

Bachelor of Science in Education

**Robert G. Hadley**

Bachelor of Science in Education

**Laurabelle Hauserman**

Bachelor of Science in Education

**Robert Henry**

Bachelor of Science in Education

**Margaret Hrecz**

Bachelor of Science in Education

**George Albert Job**

Bachelor of Science in Education

**Blanche Carrol Jones**

Bachelor of Science in Education

**Ruth Ada Kenney**

Bachelor of Science in Education

**Margie M. Klinger**

Bachelor of Science in Education

**Sarah R. Kodish**

Bachelor of Science in Education

**M. Annette Lapolla**

Bachelor of Science in Education

**Sarah E. Lowmiller**

Bachelor of Science in Education

**Georgia Ann Lucarell**

Bachelor of Science in Education

**Jane Louise Lyman**

Bachelor of Science in Education

**Margaret Reich Michael**

Bachelor of Arts

**Helen Minturn**

Bachelor of Science in Education

**Doris Gertrude Moore**

Bachelor of Science in Education

**Mary Jane Morgan**

Bachelor of Science in Education

**Anne H. Mylott**

Bachelor of Science in Education

**Marie Alexandrina Neag**

Bachelor of Arts

**Elizabeth Phillips**

Bachelor of Science in Education

**Margaret Porter**

Bachelor of Science in Education

**Joseph Henry Pritchard, Jr.**

Bachelor of Arts

**Evelyn R. Riddle**

Bachelor of Science in Education

**Helen Hall Russert**

Bachelor of Arts

**Philomena Russo**

Bachelor of Science in Education

**Anna Belle Sack**

Bachelor of Science in Education

**Helen Farrington Shilling**

Bachelor of Arts

**Dorothy Shaffer Smith**

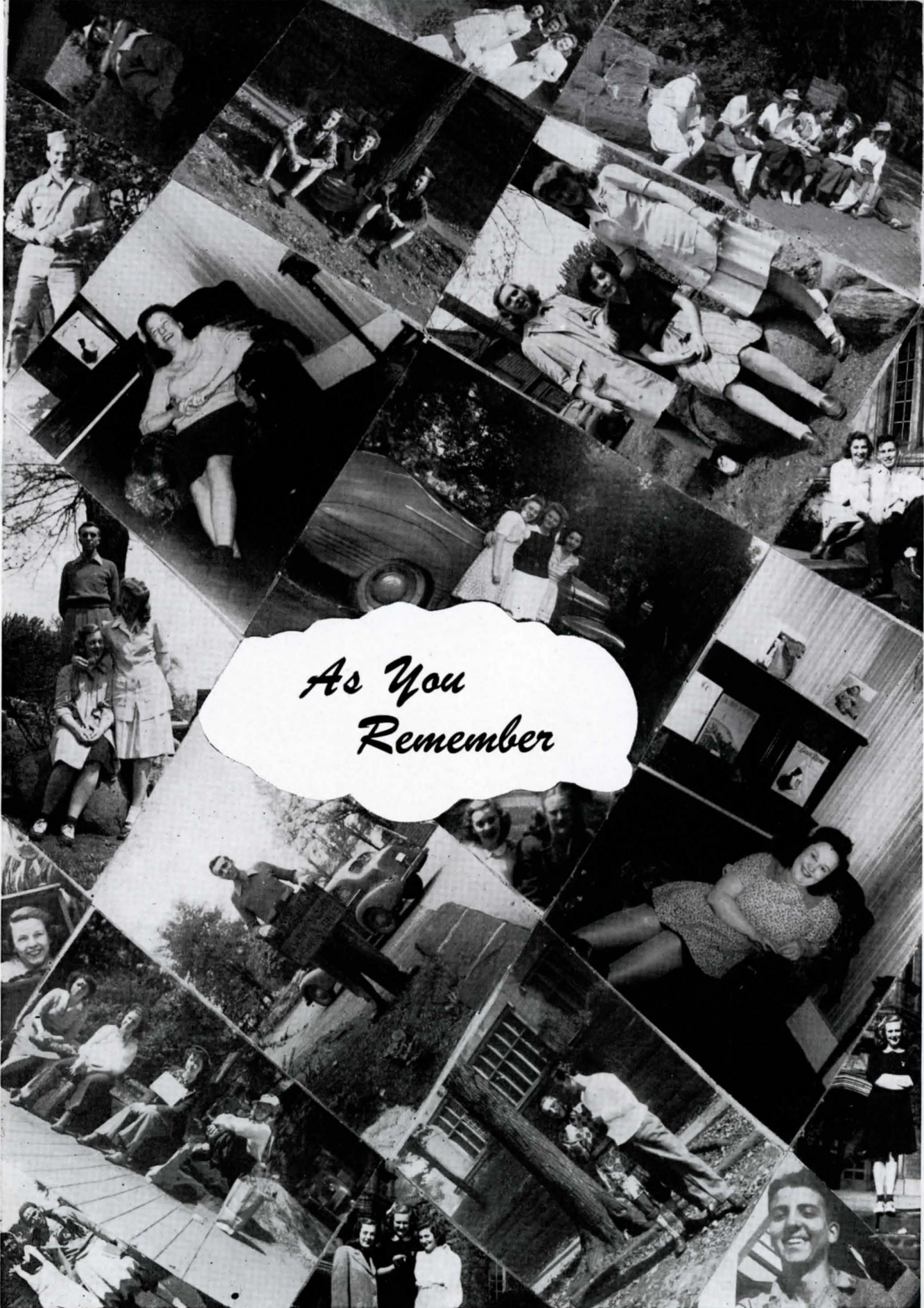
Bachelor of Science in Education

**Dorothy Bird Summers**

Bachelor of Science in Education

**Christine Webster Thomas**

Bachelor of Science in Education



*As You  
Remember*

COLLEGE OF ARTS AND SCIENCES

*As You Remember - -*



**CLASSES**

# COLLEGE OF ARTS AND SCIENCES

## Junior Class



### JUNIOR CLASS OFFICERS

Frank L. MacArtor	- - - -	President
Mary O'Neill	- - - -	Vice President
Dina DeBlasio	- - - - -	Secretary
Donna Kuhlman	- - - -	Treasurer

Dividing our time between the library and the lounge....Officers of various college organizations....Members in Who's Who and Delta Epsilon ....Junior Prom at Stambaugh's....Soft lights and sweet music....Bev reigned as queen of the ball....Attended by Connie and Tessie....Harboring "Nosy Ned"....Cramming for exams....One more year to go.



COLLEGE OF ARTS AND SCIENCES



First row, left to right: F. McArtor, W. Bush, P. Welsh, D. DeBlasio.  
 Second row, left to right: D. Kuhlman, M. O'Neill, B. Mittacos, V. Putt, M. Miller, M. Vieweg, D. Yeropoli.  
 Third row, left to right: L. Ayers, R. Mehit, J. Tims.



First row, left to right: C. Moore, A. Taylor, N. Emanuel, J. O'Brien.  
 Second row, left to right: M. Tavorario, G. Oros, D. Fisher, D. Otterman, B. Benjamin, J. Kemp, E. Whalen.  
 Third row, left to right: T. Pagliasotti, B. Roberts, J. Grimsley.

COLLEGE OF ARTS AND SCIENCES

**Sophomore Class**



**SOPHOMORE CLASS OFFICERS**

Frank Beshera - - - - - President  
Beverley Benjamin - - Vice President  
Barbara Hannon - - - - Secretary  
Jane Peppel - - - - - Treasurer

Our second year at college....Our own Angie as Snow Queen....At-  
tending the dances....Candidates for queen....Members on the Dean's List  
....Class and club officers....Boys in the armed services....Sorority and  
fraternity socials....Members in honorary fraternities....The President of  
Student Council, Ted....Baseball in the Spring....The Sophomore picnic  
at Bear's Den....More baseball....The halfway mark toward a degree.

# COLLEGE OF ARTS AND SCIENCES



First row, left to right: F. Beshera, J. Smith, A. De Crescentis, D. Gard, P. Gibson, B. Baird, M. Moskalik, E. Patrick, J. Mehler, G. Gillespie.  
 Second row, left to right: R. Burke, L. McAllister, S. Patrick, S. Thomas, A. Cosentino, M. Pucci, T. Casalini, L. Oles, F. Palotsee, M. Gilbert, A. Vagnozzi, L. Weisel, M. Vaporis.



First row, left to right: T. Hendrickson, R. Morris, R. Gillespie, L. Schrag, S. Dunker, R. Hanssen.  
 Second row: left to right: B. Benjamin, J. Peppel, H. Kish, B. Hannon, R. Berger, E. Berger, G. Zambelli.  
 Third row, left to right: R. Molher, M. Thomas, M. Welsh, V. Blackman, M. Tornich.

## Freshman Class



### FRESHMAN CLASS OFFICERS

Michael R. Kurilla	- - -	President
Virginia D'Isa	- - -	Vice President
Virginia Wilkos	- - - -	Secretary
Jack Loney	- - - - -	Treasurer

The Freshman receptions in the autumn and spring...Tea for freshman mothers...New faces...New books...Getting acclimatized... Election campaign...Banner and speeches...Hell week...Hazing... The Freshman Edict...The Frosh Assembly...Participating in school activities...Members on the Dean's List...The banquet at the Dinner Bell... The Frosh Breakfast and the bag rush...Invitations to rush parties...Bids ...Going Greek...The new semester with more new Freshmen...New Courses...Boys leaving for the service...College parties and dances... Examinations...Leaving school with a host of memories.

# COLLEGE OF ARTS AND SCIENCES



First row, left to right: N. Steele, R. Rozich, S. Pitcairn, D. McClelland, A. Stark, H. Shapiro, J. Kingsland, L. Kosma, J. Boccia, K. Van Such.  
 Second row, left to right: S. DiPiero, C. Ignazio, J. Bradshaw, J. Mellinger, P. Huebner, G. Peppel, M. Moskalick, A. Fercana, T. Mattnat, P. D'Orsi, J. Van Such.  
 Third row, left to right: E. Roth, F. Gialdini, M. Tanner, R. Duff, L. Koken, E. Hunckler, B. Brosko, A. Melnick, R. Schattino.



First row, left to right: A. Brennen, D. Howe, J. Smith, S. Hankins, A. Udall, M. Buckley, V. D'Isa, J. Loney, H. Edsall, J. Kostyk, E. Baxter, M. Salt.  
 Second row, left to right: C. Jordan, J. Medicus, F. Faucett, R. Lesky, V. Wilkos, K. Baron, S. Gordon, G. Rothermund, B. Stanley, C. Fercana, A. Lucich, G. Patterson, J. Watt, L. Berkhimer, W. Bush, A. Ortenzio, L. Cosentino, R. Dillon.  
 Third row, left to right: L. Schotenberg, M. Nicewaner, A. Melnick, J. Grice, R. Schattino, L. Baker, R. Csiss, R. Sliman, N. Macris, J. Hornick.



- Celestial Beauty -



Snow Flake Frolic Queen  
Angela Vagnozzi  
Phi Lambda Delta



May Day Queen  
Kay Ann Sullivan  
Phi Lambda Delta



Junior Prom Queen  
Beverley Benjamin  
Gamma Sigma

COLLEGE OF ARTS AND SCIENCES

*As You Remember - -*



# ACTIVITIES

# COLLEGE OF ARTS AND SCIENCES

## Neon



S. Hull

M. DeMolli

J. Guju

### STAFF

Co-Editors	- - - - -	Marie De Molli, Sally Hull
Business Manager	- - - - -	John Guju
Feature Editor	- Judith Megala; Loney, D'Isa, Schrag, Harnevious, Vagnozzi	
Class Editor	- - - - -	Frank L. McArtor
Photography Editor	- - - - -	Mary Riddle
Associate Art Directors	- - - - -	Mary K. Buckley, June Grimsley
Publicity Director	- - - - -	Dina De Blasio
Circulation Manager	- - - - -	Leonard Caccamo
	- M. Welsh, Mehler, Humphrey, Stroup, M. Thomas, L. Gibson, Vagnozzi	
Advertising Manager	- John Guju; Vagnozzi, Taylor, Vaporis, Hendrickson	
Head of Typing Staff	- - - - -	Rosalie Mehit
Chief Copy Reader	- - - - -	Jane O'Brien; P. Welsh
Faculty Advisor	- - - - -	Professor Karl Dykema



First row, left to right: L. Caccamo, J. Kemp, J. O'Brien, R. Mehit, D. DeBlasio, J. Mellinger, M. Thomas, M. Riddle, V. D'Isa.  
 Second row, left to right: J. Guju, F. McArtor, A. Vagnozzi, N. Welsh, P. Welsh, J. Grimsley, J. Megala, J. Loney, M. Buckley, W. Harnevious.



# COLLEGE OF ARTS AND SCIENCES

## Jambar



J. Megala

### STAFF HEADS

Editor-in-chief	-	-	-	-	-	Judith Megala
News Editor	-	-	-	-	-	June Grimsley
Feature Editors	-	Dina De Blasio, William Harnevious				
Society Editors	-	Virginia D'Isa, Barbara Hannon				
Circulation Manager	-	-	-	-	-	Marie De Molli
Business Manager	-	-	-	-	-	Alfred Taylor
Faculty Advisor	-	-	-	-	-	Professor O. L. Reid

### STAFF

Kay Ann Sullivan, Mary Ellen Malloy, Frances Palotsee, Connie Jordan, Grett Rothermund, Jerry Watt, Jane Riebe, Louise Grenga, Marcia Welsh, Esther Lou Berger, Lotus Koken, Mike Vaporis, Janet Kemp, Angela Vagnozzi, Lois McCallister, Ruth Lesky, John Guju, Marjorie Thomas, Gizella Oros, Jacqueline Smith, Anna Marie De Crescentis, Louise McKee, Marilyn Lyden, Madalyn Schontz, Jane O'Brien, Joseph Miklos, Sylvia Stroup.



First row, left to right: J. Watt, J. Miklos, J. Kemp, E. Berger, B. Hannon, D. O. Hevman.  
 Second row, left to right: F. Palotsee, J. O'Brien, R. Lesky, A. Vagnozzi, G. Rothermund, M. Thomas,  
 L. Koken, V. D'Isa, G. Oros, A. DeCrescentis.  
 Third row, left to right: J. Grimsley, M. Welsh, C. Jordan, W. Harnevious, M. Lyden, M. Schontz, L.  
 McKee, J. Riebe, L. McCallister, B. Mittacos, A. Taylor.  
 Fourth row, left to right: M. DeMolli, J. Mehler, J. Loney, M. Vaporis.

## Student Council



### OFFICERS

Tedford Hendrickson ..... President  
Donna Kuhlman ..... Vice President  
Marcia Welsh ..... Secretary  
Robert Hanssen ..... Treasurer  
Dean Catherine B. Semans, Faculty Adv.

Control body of campus affairs.... Their word is law.... Members elected by student body.... Sponsors Freshman Receptions.... Snowflake Frolic.... Spring Brunch.... Promoted successful clean-up campaign of college lounge.... Red Cross Dance.

### MEMBERS

Margy Nicewaner, Virginia D'Isa, Marcia Welsh, Sally Dunker, Dina De Blasio, Donna Jean Kuhlman, Leonard Caccamo, John Guju, Robert Hanssen, Tedford Hendrickson.



First row, left to right: V. D'Isa, S. Dunker, D. Kuhlman, M. Nicewaner, M. Welsh, J. Megala, D. De Blasio.  
Second row, left to right: T. Hendrickson, R. Hanssen, L. Caccamo, J. Guju.

# COLLEGE OF ARTS AND SCIENCES

## ORCHESTRA



First row, left to right: G. Rothermund, M. Vieweg, B. Mittacos, D. Gard, N. Emanuel, V. Brumbeau, B. Roberts, P. Huebner.  
 Second row, left to right: N. Poorman, T. Casalini, V. Putt, H. Stearns, M. Vaporis, G. Peppel, M. Miller, Director H. V. Stearns

## MIXED CHORUS



First row, left to right: E. LaCivita, M. Miller, K. VanSuch, L. Kosma, G. Oros, E. Baxter, S. Dunker, R. Csiss, B. Roberts, E. Robinson.  
 Second row, left to right: A. Fercana, M. Moskalik, L. Weisel, B. Baird, J. Grimsley, H. Humphrey, T. Pagliasotti, W. Bush, D. DeBlasio.  
 Third row, left to right: H. Williams, G. Rothermund, E. Emrich, P. Gibson, M. Vieweg, T. Casalini, M. Tavorario, J. Malin.  
 Fourth row, left to right: L. Cosentino, H. Stearns, V. Brumbeau, E. Hunckler, P. Huebner, G. Peppel, Director H. V. Stearns

## Delta Epsilon



First row, left to right: H. DeCicco, J. Megala, D. Otterman, M. Vieweg, B. Mittacos, D. Fisher.  
Second row, left to right: M. DeMolli, L. Gibson, F. McArtor, L. Caccamo, J. Guju, P. Welsh, V. Putt,  
N. Poorman, R. Mehit.

Honorary scholastic fraternity....Phi Beta Kappa at YoCo....Brains plus perseverance....High scholastic averages throughout their college work....The epitome of education....Membership carries with it the privilege of voluntary class attendance.

### MEMBERS

Josephine Antonelli, Lois Baehler, Leonard Caccamo, Sylvia Copich, Helen DeCicco, Marie De Molli, Dorothy Fisher, Leota Gibson, John Guju, Frank McArtor, Rosalie Mehit, Judith Megala, Beverly Mittacos, Shirley Myerovich, Marie Neag, Gerald Nummi, Dorothy Otterman, Norma Poorman, Virginia Putt, Dorothy S. Smith, Kathryn Sullivan, Mildred Vieweg.

## Sigma Tau Delta

National professional English Fraternity....Psi Gamma Chapter....  
Members are English majors or minors with high scholastic averages....  
Meetings held monthly....Discussions of modern, and classical literature  
....Book reports by special guests or members....The aim of the group is  
to encourage literary effort on the part of its members....Contributors to the  
Rectangle....Awarded the Freshman Composition pin to outstanding Fresh-  
man English student....Organization has prominence among its members.

### OFFICERS

Dorothy Fisher ..... President  
Marie De Molli .... Secretary-Treasurer  
Professor O. L. Reid .... Faculty Advisor

### MEMBERS

Jane O'Brien, Dorothy Otterman, Lorene Schrag, Leota Gibson, Patricia  
Welsh, Dina De Blasio, Judy Megala, Dorothy Fisher, Marie De Molli.



Left to right: L. Schrag, M. DeMolli, D. Fisher, D. DeBlasio, P. Welsh, L. Gibson, J. O'Brien, D. Otterman, J. Megala.

# COLLEGE OF ARTS AND SCIENCES

## Alpha Psi Omega

Eta Phi Chapter of Alpha Psi Omega...National honorary dramatic fraternity...Qualifications of members strict...Standards high...initiation, a rigid test for pure talent...Members active in portraying, directing, and producing plays...“The Great Big Doorstep”...Socials at Professor Bunn’s...With delicious home-made doughnuts...Picnics and baseball...Ambition and talent...Success and more of the same.

### OFFICERS

Agnes Uhrin ..... President  
Angela Vagnozzi ..... Secretary  
Paul Beight ..... Treasurer-Historian  
Professor Bunn ..... Faculty Advisor

### MEMBERS

Dina De Blasio, Rayma King, Gizella Oros, Agnes Uhrin, Angela Vagnozzi, Paul Beight, Robert Burke, Joseph Costarella.



First row, left to right: D. De Blasio, P. Beight, A. Uhrin, A. Vagnozzi.  
Second row, left to right: R. Burke, S. Cassano, H. Stearns, G. Oros, R. King, R. Bunn.

# COLLEGE OF ARTS AND SCIENCES

## Sigma Alpha Iota



First row, left to right: M. Miller, M. Pucci, A. Carson, B. Mittacos.  
Second row, left to right: W. Bush, E. Szalma, P. Gibson, N. Poorman, V. Putt.

National honorary music fraternity....Spring recital....Pajama party  
....Pledging of qualified students....Recipients of interesting and varied  
meetings....musical education....Socially adapted....Scholastic standard  
....Music appreciation....Participants in Chapel programs....Looking for-  
ward to a local chapter.

### OFFICERS

Norma Poorman ..... President  
Beverly Mittacos ..... Vice President  
Margaret Hrecz ..... Secretary  
Mary Bowser ..... Treasurer  
Prof. Nellie G. Dehnbostel .. Faculty Adv.

### MEMBERS

Anita Carson, Mary Angela Miller, Beverly Mittacos, Shirley Myerovich,  
Ann Morgan, Norma Poorman, Virginia Putt, Doris Welker, Olga Myerovich,  
Phyllis Gibson, Wealthie Bush, Sylvia Stroup, Madeline Pucci, Etheleda  
Szalma, Margaret Hrecz, Elizabeth Hrecz, Sarah Kodish, Mary Bowser, Jane  
Sanders.

# COLLEGE OF ARTS AND SCIENCES

## Omicron Lambda



First row, left to right: R. Caraway, R. Rozich, K. Van Such, L. Baker, C. B. Bridgham, M. O'Neill, S. Hagerty, S. Thomas, S. Dunker, R. Mohler.  
Second row, left to right: O. Porter, A. Taylor, L. Wollnick, L. Cosentino, L. Gasser, S. Pusateri, J. Guju, L. P. Caccamo.

Honorary biology fraternity designed to further interest in biological science....Members averaging "B" or above in biology....Weekly meetings ....Reports by members....Initiation of pledges....Picnic at the home of Professor Bridgham....Banquet at the Woman's City Club....A year of well rounded activities.

### OFFICERS

John Guju ..... President  
Donald Koontz ..... Vice President  
Ruth Mohler ..... Secretary  
Leonard P. Caccamo ..... Treasurer

### MEMBERS

Leonard Caccamo, Anna Marie De Crescentis, Sally Dunker, Wilma Gessler, Lois Goldblatt, Sarah Hagerty, John Guju, Donald Koontz, Ruth Mohler, Mary Pfeister, Mary O'Neill, Alfred Taylor, Sultana Thomas, Thomas Wescott, Laura Baker, Margaret Blott, Ruth Caraway, Louis Cosentino, Edward Mason, Olive Porter, Samuel Pusateri, Rose Rozich, Kathryn Van Such, Loraine Wollnick.



## Phi Epsilon

Honorary fraternity for chemistry majors....Membership is by invitation and scholastic qualification....Deeply absorbed in Chemical Sciences.... Chemical engineering....Agricultural chemistry....Physical chemistry.... Organic synthesis....Lab assistants....Spring trip to Cleveland....American Chemical Society convention....Plastics....Penicillin....Research.... The high standards to which this organization is subject have been kept despite the war....Intentions of going national in the coming years.... Sigma Xi, the goal....Active in campus activities....October Hay Ride....Annual picnic in May.

### OFFICERS

Frank L. McArtor ..... President  
Samuel L. Deutsch ..... Secretary  
Robert A. Hanssen ..... Treasurer  
Prof. E. D. Scudder .... Faculty Advisor

### MEMBERS

Samuel L. Deutsch, Robert A. Hanssen, Don M. Hart, Frank L. MacArtor, Frank Maron, Dominick Yeropoli.



Left to right: D. Yeropoli, F. MacArtor, S. Deutsch, E. Scudder, R. Hanssen.

## Pan-Hellenic Council



### OFFICERS

Helen Humphrey ..... Chairman  
Jane Peppel ..... Vice Chairman  
Theresa Pagliasotti .... Secretary-Treas.  
Prof. Karl Dykema .... Faculty Advisor

Governing body of the Greek social organizations on the campus.... Settling disputes and more of the same....Each organization is allowed to express its views and settle the differences that arise....Formed to foster friendly relationships between the Greeks....Sponsors of the annual Pan-Hellenic Ball and picnic....Size reduced this year to facilitate its work.... Each organization represented by its president and one elected representative.

### MEMBERS

Jack Mehler, Jack Loney, Helen DeCicco, Angela Vagnozzi, Tedford Hendrickson, Edward Whalen, Dorothy Otterman, Jane Peppel, Helen Humphrey, Theresa Pagliasotti.



Standing, left to right: E. Whalen, T. Hendrickson, K. Dykema, J. Loney, J. Mehler.  
Seated, left to right: A. Vagnozzi, H. DeCicco, D. Otterman, J. Peppel, T. Pagliasotti.

## Kappa Sigma Kappa

### OFFICERS

Edward Whalen ..... President  
Joseph Miklos ..... Pledge President  
Tedford Hendrickson ..... Sec.-Treas.  
Professor Buchanan, Professor Smith,  
Professor Webster .... Faculty Advisors



Kappa Sigs....Only national social fraternity on the campus....Iota Chapter....Great loss of members to the armed forces....Very successful season....Annual Spring Formal....Stag parties....Mixed parties....Informal dances....Intra-mural sports....Softball team....Champs for two consecutive years....Looking forward to the day when "Johnny comes marching home again."

### MEMBERS

Gale Patterson, Joseph Miklos, Jerry Watt, Steve Patrick, Albert Ortenzio, Edward Whalen, Tedford Hendrickson.



First row, left to right: E. Whalen, J. Miklos, G. Patterson, S. Patrick, J. Watt.  
Second row, left to right: W. Webster, P. Buchanan, A. Ortenzio, T. Hendrickson.

# Phi Lambda Delta



### OFFICERS

- Helen DeCicco ..... President
- Constance Taylor ..... Vice President
- Angela Vagnozzi ..... Secretary
- Lorene Schrag ..... Treasurer
- Mrs. P. Calvin Pickard,
- Mrs. John Allison ..... Advisors

A grand year...Characteristic of beauty, talent, and sincere friendliness...Costume Gypsy party...Kid party...Traditional orchids and lamb favors...Our Angie made a stunning Snowflake Queen...Ghost party...Parties with Kappa Sigs...Bought War Bond...Pleasures not to be forgotten.

### MEMBERS

Baron, Callan, Carter, DeCicco, Faucett, Gordon, Jones, Jordan, Hunter, Lesky, Medicus, Palotsee, Raptau, Schrag, Stoner, Taylor, Roberts, Vagnozzi, Wilkos.



First row, left to right: V. Wilkos, G. Rothermund, B. Hunter, B. Stoner, C. Taylor, L. Schrag, P. Carter, A. Vagnozzi, H. DeCicco.  
 Second row, left to right: I. Jones, F. Faucett, E. Gordon, R. Lesky, T. Callan, J. Medicus, T. Raptau, K. Baron, C. Jordan, F. Palotsee.

COLLEGE OF ARTS AND SCIENCES

Phi Sigma Epsilon

OFFICERS

- Jack Loney ..... President-Secretary
- Jack Mehler ..... Vice President
- William E. Harnevious ..... Treasurer
- Vinton Neely ..... Past President
- Prof. Carl Benkner .... Faculty Advisor



Stags and more stags highlighted the season...Stags honoring members leaving for the armed forces...Rush stags...And just stags. The Christmas Holidays ushered in the party with the Gamma Sigs...Joint party with the Alpha Deltas...Rush breakfast at Mill Creek Park...Welcomed the pledges...Party with the Phi Lambs...Published the Phi Sig News... Annual dinner-dance at Mahoning Country Club closed an active social season.

MEMBERS

Jack Mehler, William Harnevious, Leonard Fagnano, Joachim Vouros, Joseph O'Hara, Jack Loney, Edward McQuillan, Louis Berkheimer, Arseny Melnick, John Hammond, Harry Williams, James Quay, Frank McArtor, Albert Brennan.



First row, left to right: J. Quay, H. Williams, F. McArtor, J. Hannon, A. Melnick, L. Berkheimer, E. McQuillan. Second row, left to right: S. Hankins, H. Edsell, D. Hart, W. Harnevious, V. Neely, L. Fagnano, J. Loney, J. Mehler.

# COLLEGE OF ARTS AND SCIENCES

## Gamma Sigma



Dorothy Otterman ..... President  
Dorothy Fisher ..... Vice President  
Jane Peppel ..... Secretary  
Beverley Benjamin ..... Treasurer  
Mrs. Joseph Smith,  
Mrs. P. C. Pickard ..... Advisors

Gathered skirts....Jewelry....Root beer....Bowling....Spaghetti at Carosella's....Freshman tea at Shady Lawn Tea Room....Formal dinner at Pick-Ohio....College contributions....Joint parties with Kappa Sigs and Phi Sigs....Bottom, an abundance of wit....Bev a beautiful Junior Prom Queen.

### MEMBERS

Benjamin, Berger, Buckley, Cassidy, D'Isa, Fisher, Gessler, Haid, Hannon, Huebner, Kemp, Kennedy, Kish, Koken, Love, Malin, Malloy, Mellinger, Moriarity, Naples, Otterman, J. Peppel, Quinn, Riddle, Thomas, Padmore, Pitcairn, G. Peppel.



First row, left to right: M. Riddle, V. D'Isa, M. Thomas, E. Love, M. E. Malloy, B. Benjamin, H. Kish, D. Otterman.  
Second row, left to right: L. Koken, J. Kemp, J. Mellinger, M. K. Buckley, B. Hannon, M. Naples, R. Cassidy.  
Third row, left to right: J. Moriarty, M. L. Kennedy, E. Berger, D. Fisher, G. Peppel, M. Huebner.

## Alpha Theta Delta

### OFFICERS

Helen Humphrey ..... President  
 Theresa Pagliasotti ..... Vice President  
 June Grimsley ..... Recording Secretary  
 Donna Kuhlman ..... Corres. Secretary  
 Anna Marie De Crescentis .... Treasurer  
 Prof. E. McKissock ..... Faculty Advisor



Fall party with the Phi Sigs....Christmas carolling....Snow ball fights  
 ....Autumn hikes....New Year's Eve at Sal's....Judy, dynamo behind the  
 Jambar....Sal and Marie, capable heads of the Neon....Pud the Mayor's  
 daughter....our College activities of today....our memories of tomorrow.

### MEMBERS

Megala, M. Welsh, Hull, Patrick, Grimsley, Kosma, Baird, Bradshaw, Csiss,  
 Naughton, Van Such, Dingley, Dunker, Humphrey, De Crescentis, Nicewaner,  
 Pope, Smith, Jascke, Pagliasotti, Stroup, Morgan, Oros, O'Neill, Kuhlman, P.  
 Welsh, Grice, Burkett, Rozich, Kostyk, Foley, Mattnat.



First row, left to right: M. Burkett, B. Baird, J. Bradshaw, M. O'Neill, A. De Crescentis, J. Megala,  
 J. Grise, M. Nicewaner, D. Foley, R. Cisse, J. Kostyk, R. Rozich.  
 Second row, left to right: L. Kosma, T. Mattnat, K. Van Such, T. Pagliasotti, K. Naughton, E. Patrick,  
 G. Oros, S. Dunker, J. Grimsley, P. Welsh, M. DeMolli, M. Welsh, J. Smith, D. Kuhlman.

# COLLEGE OF ARTS AND SCIENCES

## Eta Delta Sigma



### OFFICERS

Leota Gibson ..... President  
Margaret Mahrer ..... Vice President  
Dolly Werner ..... Corres. Secretary  
Gail Dahlgren ..... Record. Secretary  
Mary Vanusek Cifra ..... Treasurer  
Mary Ferguson ..... Second Vice Pres.

### BOARD OF MANAGERS

Mary Murphy           Genevieve Prosetek  
Alice Faust            Leors Griffiths  
Prof. Frieda Chapman .. Faculty Advisor

Newest social sorority on the campus....Chartered February, 1943....  
Members are night school students....Annual picnic at Slippery Rock Pavilion....  
Christmas party at the home of Margaret Mahrer....An address by  
President Howard W. Jones....Social sorority with professional inclinations.

### MEMBERS

Bossert, Kilpatrick, Hutchinson, Menning, Perry, Pyle, Gordon, Dahlgren,  
Juggenheimer, Kabelle, Lewellyn, Deamor, Cummings, Joerndt, Bullock, Quirk,  
Meikle, Gallagher, Randall, Gibson, Mahrer, Werner, Dahlgren, Cifra, Fer-  
guson, Murphy, Faust, Prosetek, Griffiths.



Seated, left to right: Kay Kabelle, Alice Faust, Margaret Mahrer, Matilda Menning, Mary V. Cifra.  
Standing, left to right: Blanche Guinaugh, Mary Jane Quirk, Mary Katherine Murphy, Leota Hunter  
Gibson, Golda Kilpatrick, Winifred Bossert, Lillian Bullock.



# COLLEGE OF ARTS AND SCIENCES

## Religion in Life

Religion in Life...Organization significant of its name...Socially inclined with a religious outlook...High lights of the year...Christmas party at Buechner Hall...Social at Birch Hill Cabin...Joint picnic with Newman Club...Firestone Park...Get together at Baird's...Sunday afternoon meetings...First Presbyterian Church...Candle Light Services.

### OFFICERS

Helen Humphrey ..... President  
Betty Baird ..... Vice President  
Sally Dunker ..... Secretary-Treasurer  
Prof. H. V. Stearns, Dr. Garth .. Advisors

### MEMBERS

Jack Mehler, Mary Bell Gilbert, Lotus Koken, Virginia Blackman, Lois McCallister, June Bradshaw, Helen Humphrey, Sally Dunker, Elaine Adams, Betty Baird, Howard Edsall, Dorothy Delin, Jeanne Grise, Sally Hull, Beverly Benjamin, Harry Williams, Jane Riebe, June Grimsley, Jane O'Brien, Jerry Watt, James Hammond, Joseph Costarella, Ruth Mohler, James Malin, Dorothy Otterman, Frank McArtor, Alfred Taylor, Ruth Berger, Esther Berger.



First row, left to right: B. Baird, R. Berger, E. Berger, D. Otterman, B. Benjamin, J. Riebe, J. O'Brien, D. Deline, J. Bradshaw, J. Grise, L. McCallister.  
Second row, left to right: J. Grimsley, R. Mohler, S. Dunker, L. Koken, H. Edsall.  
Third row, left to right: V. Neeley, J. Mehler, F. McArtor, H. Williams, H. Stearns, J. Watt, T. Hendrickson, A. Taylor.

COLLEGE OF ARTS AND SCIENCES

Newman Club



First row, left to right: J. Loney, G. Gillespie, A. Brennen, A. Fercana, R. Needham.  
Second row, left to right: T. Pagliasotti, V. D'Isa, M. O'Neill, R. Ferry, T. Callan, R. Lesky, D. De Blasio,  
F. Palotsee, J. Megala, A. Uhrin, M. Miller, M. Moskalick, M. Buckley, L. Grenga.  
Third row, left to right: Father De Crane, P. Welsh, M. Welsh, M. Thomas, B. Hannon, K. Van Such,  
S. Pitcairn, C. Jordan, M. Naples, V. Wilkos, R. Csiss, T. Mattnat, J. Boccia, J. Gillespie, M. DeMolli.

OFFICERS

- Jack Loney ..... President
Mary O'Neill ..... Vice President
Mary Kay Buckley ..... Secretary
Theresa Pagliasotti ..... Treasurer
Rev. Arthur B. DeCrane ..... Advisor

Catholic organization at Youngstown College... Monthly meetings held at the rectory of St. Columba's... Speakers... Communion breakfasts... Christmas party at Pioneer Pavillion... Ice skating at the arena... Party at Louise Grenga's... Picnic with R. I. L. at Firestone Park... Our able advisor Reverend Arthur B. DeCrane... Pontifical Mass celebrated by Bishop James A. McFadden.

MEMBERS

Antonelli, Beshara, Blasius, Brennan, Buckley, Burke, Caccamo, Carano, Cellines, Chasko, Copich, A. Cosentino, L. Cosentino, Csiss, De Blasio, De Crescentis, DeMolli, Dingley, D'Isa, Emanuel, Fercana, Gessler, Gialdome, Grenga, Jackovina, Jordan, Hart, Hogan, Kelly, Klocek, Kurilla, Liptak, Loney, Lynch, McCann, McKinney, Maron, Mattnat, Megala, Miller, Molnar, Moriarity, Moskalik, Naples, Naughton, Needham, O'Hara, O'Neill, Oros, Ortenzio, Pacetti, Pagliasotti, Palotsee, Patrick, Phillips, Pitcairn, Prince, Pucci, Rozich, Silvasky, Squella, Steadman, Stoyan, Sullivan, Szalma, Tavolario, Tedde, Thomas, Uhrin, Weisel, M. Welsh, P. Welsh, Wilkos, Yaureck, Yash, Yeropoli, Haid, Van Such.

## Women's Athletic Association

Women's Athletic Association....Sports....Friendships..Fun....Swimming parties....Bowling contests....Hikes....Christmas party at the home of the president....Lots of games, food, and gifts....Picnics in the Spring.... Mill Creek Park....Members are well versed in all types of sports....A common bond.

### OFFICERS

Virginia Blackman ..... President  
Elizabeth Patrick ..... Vice President  
Maryanna Tornich ..... Treasurer  
Lois McCallister ..... Secretary  
Prof. Ruth Whittington .. Faculty Advisor

### MEMBERS

Magdalene Naples, Beverley Mittacos, Dolores Conkle, Maryanna Tornich, Sally Pitcairn, Dawn McClelland, Mary Bell Gilbert, Lois McCallister, Betty Boyts, Jacqueline Smith, Anna Marie DeCrescentis, Jennie Vrancich, Rosalie Mehit, Virginia Blackman, Elizabeth Patrick, Madaline Pucci, Dorothy Gard, June Grimsley, Frances Palotsee, Sylvia Copich, Marcia Welsh, Evelyn Blasius, June Kostyk, Louise Grenga.



First row, left to right: J. Smith, L. Grenga, J. Vrancich, D. Conkle, F. Palotsee, M. Pucci, V. Blackman, E. Patrick, M. Tornich, B. Mittacos.  
Second row, left to right: M. Naples, S. Pitcairn, S. Copich, M. Gilbert, B. Boyts, L. McCallister, R. Mehit, M. Welsh, D. Gard, E. Blasius, J. Grimsley.

# COLLEGE OF ARTS AND SCIENCES

## Elementary Teachers' Professional Club

Professional organization for teachers in the elementary education field  
....Assembly programs....Discussions of current problems in the educational  
world....Guest speakers....Installation of pledged members....Annual  
May Banquet....

### OFFICERS

Theresa Pagliasotti ..... President  
Jennie Vrancich ..... Vice President  
Helen Humphrey ..... Secretary  
Rosalie Mehit ..... Treasurer  
Prof. Frieda Chapman... Faculty Advisor

### MEMBERS

Louise Grenga, Esther Lou Berger, Ruth Berger, Josephine Boccia, Florence  
Bailey, Rose Csiss, Levie Kosma, Theresa Rose Mattnat, Betty Jane Standley,  
Agnes Uhrin, Mary Bell Gilbert, Victoria Brumbea, Judy Megala, Jennie  
Vrancich, Frances Palotsee, Kay Ann Sullivan, Sally Hull, Helen Humphrey,  
Theresa Pagliasotti, Rosalie Mehit, Beverley Benjamin, Sylvia Copich, Eliz-  
abeth Patrick, June Grimsley, Gertrude Rothermund, Theresa Callan, Maureen  
Shoor, Sally Sedoruk, Marietta Thomas, Carmel Ignazio, Constance Jordan,  
Mary Alice Robinson.



First row, left to right: J. Boccia, T. Mattnat, J. Smith, L. Kosma, J. Megala, F. Palotsee, J. Vrancich,  
E. Berger, R. Berger, T. Pagliasotti.  
Second row, left to right: B. Benjamin, E. Patrick, L. Grenga, S. Copich, A. Uhrin, H. Shapiro.  
Third row, left to right: F. Chapman, H. Humphrey, R. Mehit, V. Brumbea, F. Bailey, M. Gilbert, R. Csiss,  
J. Grimsley.

# COLLEGE OF ARTS AND SCIENCES

## Speech Society



First row, left to right: C. Gould, F. Beshara, B. Roberts, J. Van Such, C. Jordan, R. Bunn, F. Palotsee, A. Vagnozzi.  
Second row, left to right: M. Vaporis, A. Ortenzio, D. DeBlasio, J. Megala, A. Melnick.

Two years old....Promoting oral wits in advanced collegiate forensics  
....Inter-collegiate competition....Very active year....Inter-collegiate legis-  
lative assembly at Baldwin-Wallace College....Presenting a talent review  
to boost the 4th War Loan Drive....Sponsored Raindrop Shuffle....Picnic  
and parties....Resulting in both social and academic training.

### OFFICERS

Angela Vagnozzi ..... President  
Dina De Blasio ..... Vice President  
Frances Palotsee ..... Secretary  
Michael Vaporis ..... Treasurer  
Prof Bunn, Prof. Gould..Faculty Advisors

### MEMBERS

Frances Babcock, Frank Beshara, Constance Jordan, Raymond Kurilla,  
Judith Megala, Arseny Melnick, Albert Ortenzio, Frances Palotsee, Barbara  
Roberts, Agnes Uhrin, Angela Vagnozzi, Walter Vangeloff, Michael Vaporis,  
John Van Such.

## International Relations



First row, left to right: L. McCallister, D. Fisher, P. Gibson, A. Taylor, C. Gould.  
Second row, left to right: M. Gilbert, L. Koken, L. Gibson, J. Mellinger, H. Kish, D. Otterman, D. Gard.

Studying international problems via the round table discussion...Our peacemakers of tomorrow...Discussing books about foreign affairs and current events...Represented at a district convention at Muskingum College...Members of faculty as guest speakers...Professor O. L. Reid...Professor Karl Dykema...Dean G. M. Wilcox...Termination of a very successful and worthwhile year.

### OFFICERS

Alfred Taylor ..... President  
Mary Riddle ..... Vice President  
Mildred Vieweg .... Secretary-Treasurer  
Prof. Clarence Gould ... Faculty Advisor

### MEMBERS

Dorothy Fisher, Dorothy Otterman, Helen Kish, June Mellinger, Leota Gibson, Alfred Taylor, Mary Riddle, Ruth Duff, Mike Vaporis, Mary Bell Gilbert, Lois McCallister, Phyllis Gibson, Mildred Vieweg, Dorothy Card, Lotus Koken.

C O L L E G E O F B U S I N E S S

*As You Remember - -*



**BUSINESS COLLEGE FACULTY**

J. B. Williams, Principal

R. D. Craig, Registrar

Stella Cassano

Frances Crider

Helen Emery

Grace Geiger

Hilda Hanna

Vera Jenkins

Arline Larson

## Graduates

Martha Jane Consider	Margaret Therese Miklos
Josephine Corvino	Sophia Millich
Desdemona DeCapita	Evelyn Noble
Dorothy Louise Delin	Melania Opritza
Virginia DeMarsh	Adeline V. Paris
Rose Ferry	Evelyn G. Park
Esther Faith Gallatin	Jane Frances Parker
Irene J. Gora	Margaret Paul
Wilma Josephine Gordon	Jane Riebe
Carmel Guerriero	Mary Ellen Rist
Elvera Guerrio	Elvera Bella Rossi
Fifi Hazimanolis	Marjorie Helen Schreier
Helen Horvath	Marion E. Speerbrecher
Esther E. Korchmaros	Virginia Marie Thomas
Mildred A. Leko	Helen Elizabeth Tiefel
Mary Luscre	Helen M. Valon
Anita Marie Marinelli	Steve J. Volar
Mary Louise McKee	Jane Wood

Irene Zelinsky



## Alpha Iota

White collar gals....The theater party....Swooning over Frankie....  
The party with the Phi Sigs....More parties....Roller skating at the Rayen-  
wood rink....Hikes....Food at the Dinner Bell....The joint picnic with Tau  
Kappa Nu....Initiation of pledges....The wedding of Lillian Woolman to  
Gene Brown....Orange blossoms and white satin.

### OFFICERS

Madelyn Schontz ..... President  
Mary Edie ..... Vice President  
Marjorie Schreier ..... Secretary  
Jane Riebe ..... Treasurer  
Josephine Smith ..... Pledge Captain  
Mrs. Helen Emery ..... Faculty Advisor

### MEMBERS

Marilyn Lyden, Jane Riebe, Madelyn Schontz, Louise McKee, Josephine  
Smith, Mary Edie, Marjorie Schreier, Catherine Buehler, Martha Consider,  
Esther Gallatin, Wilma Gordon, Jessel Guy, Jean Russell, Lillian Woolman,  
Betty Betts, Dorothy Devite, Janet Haddow, Lois Hogue, Jane Troxil.



Standing, left to right: J. Russell, M. Schrier, J. Riebe, M. Edie, M. Schontz, B. Betz.  
Seated, first row, left to right: J. Traxell, D. Devite, L. Hogue, W. Gordon, M. Consider, C. Gallatin.  
Seated, second row, left to right: J. Haddow, M. Lyden, L. McKee, J. Smith.

## Tau Kappa Nu

More white collar gals....Business efficiency....Sorority parties....The weekend to Cleveland to see the Ice Follies....Fun at the Hollenden Hotel.... The dinner party at Lucciano's....Birthday celebrations....Rushees.... Pledge initiation....The breakfast at Crandall Park....Waffles and pork sausage....Baseball....Pledge installation at Trinity Church....Gardenias ....Spring picnic with Alpha Iota.

### OFFICERS

Elvera Rossi ..... President  
 Aurora Fortunata ..... Treasurer  
 Angela Gamberale ..... Secretary  
 Sophie Millich ..... Vice President  
 Miss Grace Geiger .... Faculty Advisor

### MEMBERS

Desdemonia DeCapita, Marge Furey, Aurora Fortunata, Angela Gamberale, Anita Marinelli, Sophia Millich, Mary Ellen Rist, Elvera Rossi, Marion Speerbrecher, Doris Matlos, Nancy Crish, Rose Ferry, Carmel Guerriero, Jean Whitstone, Irene Zelinsky.



First row, left to right: A. Fortunata, A. Marinelli, I. Betts, I. Zelinsky, E. Rossi, S. Millich.  
 Second row, left to right: M. Speerbrecher, M. Rist, J. Whitstone, A. Gamberale, D. DeCapita, M. Furey, R. Ferry.

*As You Remember - -*



Dean of the Law College—Raymond L. Falls, A. B., LL.B.

**FACULTY**

Henry C. Church, LL.B.  
C. Kenneth Clark, LL.B.  
Raymond L. Falls, A.B., LL.B.  
Ross E. Diser, A.B., LL.B.  
Theodore Macejko, LL.B.  
Erskine Maiden, Jr., A.B.,  
Ralph Turner, LL.B.  
Richard Wills, A.B., LL.B.  
Knowles Wyatt, B.S., LL.B.

## Graduates



**Frederick M. Booth**

LL. B.  
Gessner Law Club.



**Eleanor D. Chirelli**

LL. B.  
Phi Lambda Delta; Gessner  
Law Club.



**George Steele**

LL. B.  
Sigma Kappa Phi, Presi-  
dent; Gessner Law Club,  
President.

**Frank Golasky**

LL. B.  
Gessner Law Club.

## Gessner Law Club

Inaugurated as an organization for instructors and students of law... Recently reorganized... Monthly meetings... Guest speakers... Current law topics... Appellate Procedure... State Taxation... Probate Court.

### OFFICERS

Leo Downey ..... President  
Pauline Church ..... Vice President  
Maurine Brunner ..... Secretary  
Raymond Tatman ..... Treasurer

### MEMBERS

William M. Acker, Fred Booth, Pauline Botty, Maurine Brunner, Eleanor Chirelli, Pauline Church, Howard Cole, Rue Alice Cope, Johanna M. D'Amico, John De Pietro, Saxon Diser, Jerome Dougherty, Leo Downey, Paul Freeman, Frank Golasky, John Hall, Elton W. Luckhart, George Steele, Robert Stevenson, Robert Tatman, Robert Thomas, Richard Wilson.



Standing, left to right: J. DePietro, P. Botty, R. Thomas, R. Falls, H. Church, L. Downey, G. Steele, H. Cole, F. Golasky, F. Booth.  
Seated, left to right: S. Diser, E. Chirelli, J. D'Amico, R. Stevenson, M. Brunner, P. Church, R. Tatman, J. Dougherty, E. Luckhart.

The Best Pictures That  
Appear Every Week in the  
Illustrated News Magazines  
Are Printed FIRST in The

# YOUNGSTOWN VINDICATOR

Compliments of

THE

Youngstown  
Alloy Casting  
Corp.

Youngstown, Ohio

Congratulations Graduates



BUY MORE  
WAR BONDS



Thornton  
Laundry and Dry Cleaning  
Company



**McKELVEY'S**  
and  
**CHESSHIRE STUDIO**  
(Photographers for the Class of '44)

**EXTEND CONGRATULATIONS AND  
BEST WISHES FOR THE FUTURE**

You graduate in a fateful year in world history. Many of the boys will go into the service of their country. Many of the girls will take home front jobs to further the war effort. Whatever you do, wherever you go, remember the democratic, educational background you have received, the foundation you have been given for your future responsibilities of citizenship in a great free country. It is to your generation that the task will be given to maintain the Four Freedoms for which the brave young men of the Allied nations are now so valiantly fighting. This is a great and grave responsibility. Never forget it.

**CONGRATULATIONS, GRADUATES!**

**Compliments**

**of**

**ALEX DeBLASIO**

**GENERAL CONTRACTOR**

Youngstown, Ohio

Our congratulations and best wishes  
for future success and happiness to  
the class of . . . . . '44

**The Diamond Steel  
Construction Co.**

**C. R. SMITH**

Compliments of

**THE WILKOFF CO.**

Wilson Avenue

**IRON & STEEL SCRAP**

**New and Second Hand Steel Plates and Sheets**

Compliments of

**METAL CARBIDES CORPORATION**

Youngstown, Ohio

**MANUFACTURERS OF POWDERED METAL APPLICATIONS**

**Tools - Dies - Machine Tool Parts - Diamond Articles**

Compliments of

**THE WILLIAM B. POLLOCK CO.**

Compliments of

**THE  
YOUNGSTOWN PRINTING  
COMPANY**

---

**YOUR ANNUAL PRINTERS**

---

**787 WICK AVENUE**

**YOUNGSTOWN, OHIO**



## **What Post-War Plan Are You Making For Yourself?**

Set a goal for yourself and head toward it, come what may!  
There'll be more opportunities than were ever dreamed of . . . for  
the young man or young woman who is ready for them! Good  
luck, Seniors!

**STROUSS-HIRSHBERG'S**

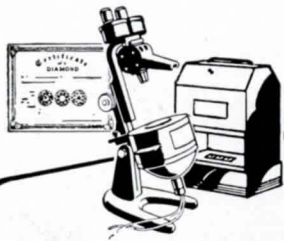
**Known for Dependability for Over 69 Years.**

Congratulations Graduates

**BERT'S BARBER SHOP**

YOUNGSTOWN HOTEL

311 W. Boardman Street



*A word to the Wise*

Scientific diamond grading assures you a beautiful diamond of better value.

We, as a Registered Jeweler with international recognition of business integrity and proven knowledge give you the added certainty of a scientifically graded diamond.

**RAYMOND BRENNER**

JEWELER

Federal at Hazel

Registered Jeweler, American Gem Society

Congratulations  
and Best Wishes

**I. VAGNOZZI  
INSURANCE AGENCY**

19 E. Boardman Street  
Youngstown, Ohio

Compliments

of

**THE ASTATIC CORP.**


Youngstown, Ohio

**H U M E ' S**  
**Two Dependable  
Furniture Stores**

•  
252 West Federal St.

•  
2930 Market Street

•  
**"Where Youngstown Shops  
With Confidence"**



*Engravers to  
Your Annual*

**THE YOUNGSTOWN ARC ENGRAVING CO.**  
Phone 32109      YOUNGSTOWN, OHIO      Phone 32100

Photographers • Artists • Photo-Engravers • Electrotypers

---

## Autographs





