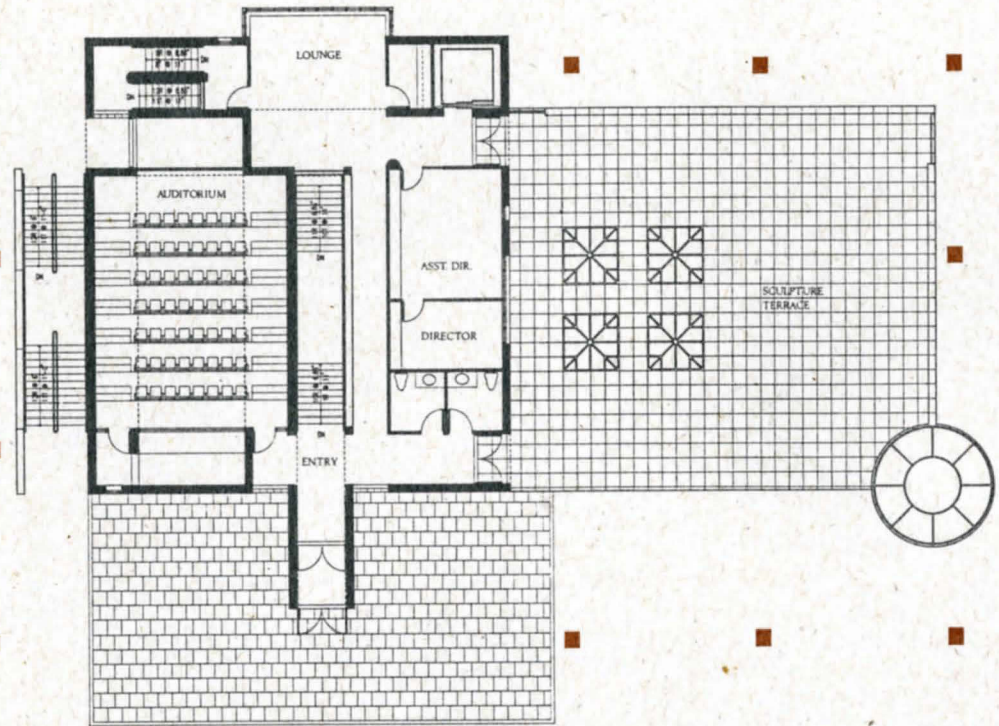




**THE MC DONOUGH
MUSEUM OF ART**

YOUNGSTOWN STATE UNIVERSITY



DEDICATION

**THE MC DONOUGH MUSEUM OF ART
YOUNGSTOWN STATE UNIVERSITY**

26 October 1991

PROGRAM

*Presiding....Neil D. Humphrey
President, Youngstown State University*

*Invocation....Most Reverend Benedict C. Franzetta
Auxiliary Bishop, Diocese of Youngstown*

*Presentation of Building....Paul Ricciuti
Buchanan, Ricciuti and Balog, Architects
Gwathmey Siegel and Associates, Design Consultants*

*Presentation of Key....Edward A. Flask
Chair, Building and Property Committee
Board of Trustees*

*Acceptance of Building....John F. Geletka
Chair, Board of Trustees*

Musical Selections....Dana Chorale, Dana School of Music

Response....John J. McDonough, M.D.

*Special Presentation....David Sweetkind, Dean
College of Fine and Performing Arts*

In 1978, when John J. McDonough sold his collection of American paintings, Sotheby's, the auction house that handled the sale, called it a "landmark auction." At the time, it was the largest sale of American art by a single collector and became national news. The 63 works McDonough had carefully selected over the previous twelve years formed, according to Thomas Norton, "an almost comprehensive cross-section of the principal artists, themes and periods of representational American art." Indeed, the collection was exhibited at major museums across the country before it was dispersed.

Within months of the sale, Dr. McDonough began to form an even finer collection of American art, this time focusing his attention on the fifty-year period between 1875 and 1925. This current collection, numbering about 100 paintings, has earned McDonough the designation "the quintessentially focused collector" by John L. Marion, who conducted the Sotheby auction. McDonough is thoroughly familiar with the period and has selected carefully and knowledgeably, making his collection a jewel of the art world.

Despite the fact that many of his paintings increase in value over time, Dr. McDonough says that he does not collect art as a financial investment. "I think paintings should be loved and enjoyed," he says, "and I don't think they should be bought for sale and profit, really. You should go into the stock market for that."

It all started with McDonough's frequent visits to the Toledo Museum of Art as a young boy. He credits his mother's love of culture for encouraging his appreciation of fine art. Later, as a medical student in Chicago, McDonough spent long hours in the Art Institute, enjoying its large Impressionist collection.

Dr. McDonough received his undergraduate education at St. John's College in Toledo, Ohio and his M.D. from Loyola University Medical School in Chicago. He opened his private practice in obstetrics and gynecology in Youngstown in 1942 and, in the course of the next 43 years, published numerous articles in the field. He is a member of the American Board of Obstetrics and Gynecology and a Fellow of the American College of Surgery. Dr. McDonough has been active in various civic and professional organizations including the Youngstown Area Chamber of Commerce, the Mahoning County Medical Society, and Project HOPE.

Dr. McDonough served on the Board of Trustees of The Butler Institute of American Art during the late 1960s and again in the late 1970s, representing The Butler Institute at the conference on the American Association of Museums Committee in 1977. In that same year, he served on the R.J. Wean Lectureship Program Committee at Youngstown State University.



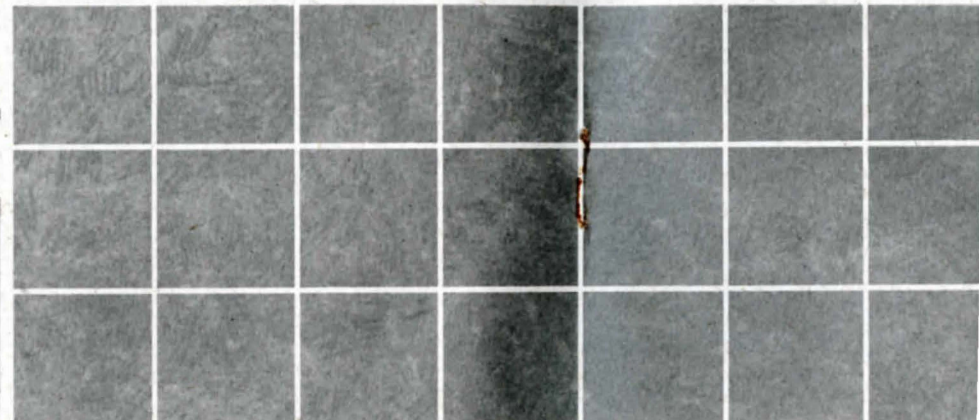
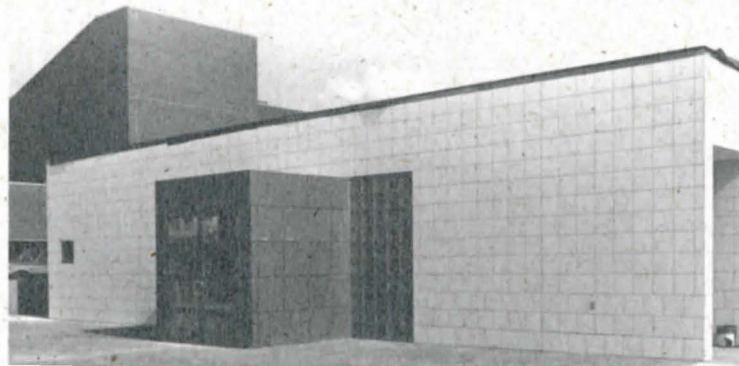
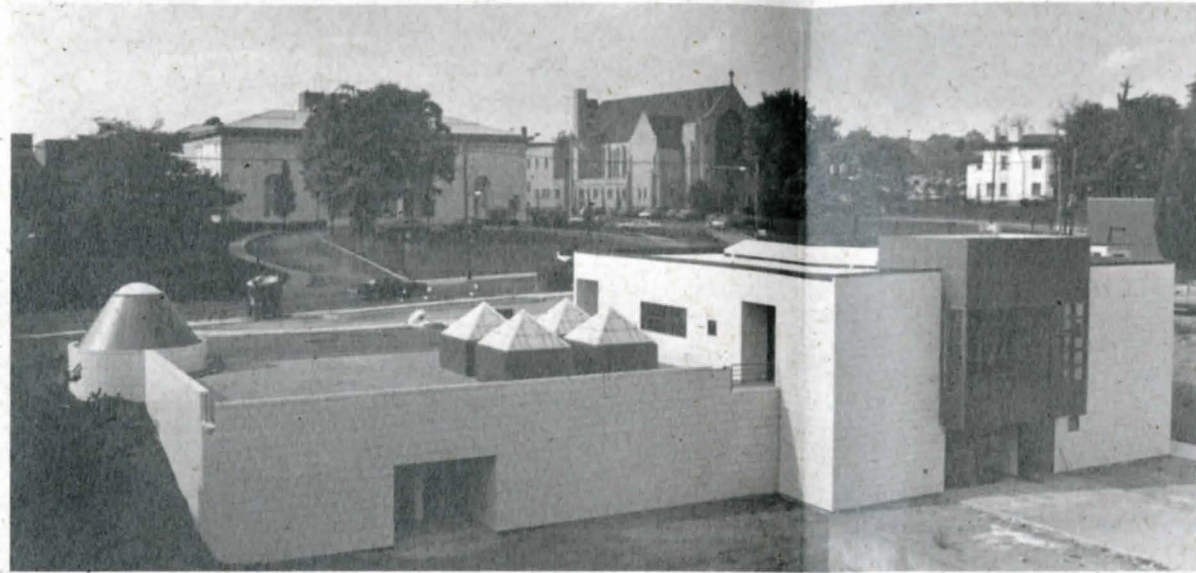
My house is full of paintings. I enjoy them every day. Sometimes, I take a day off and go through the entire collection, and I always seem to be happy with them. They never wear out.

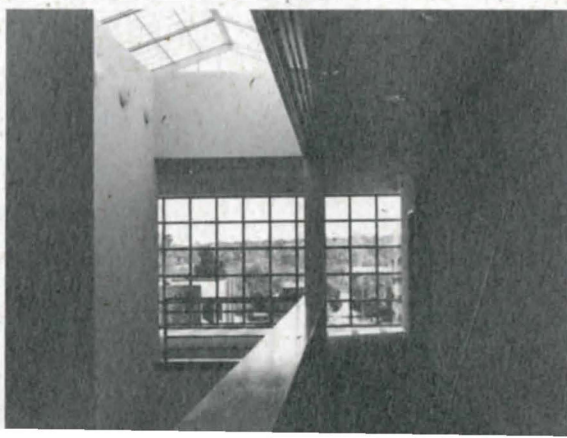
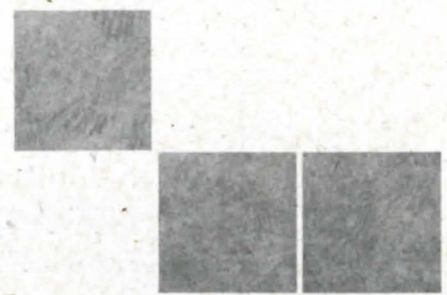
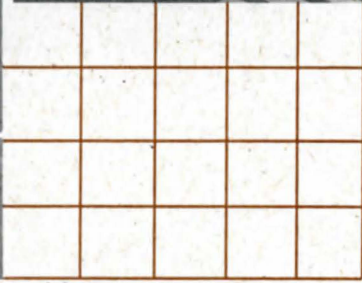
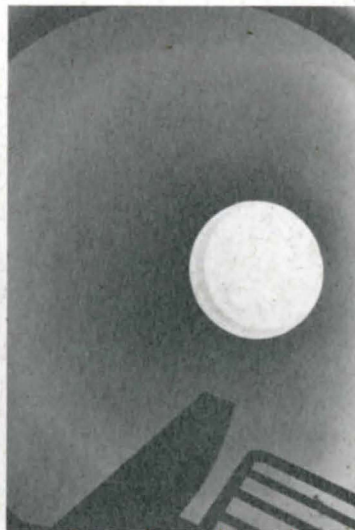
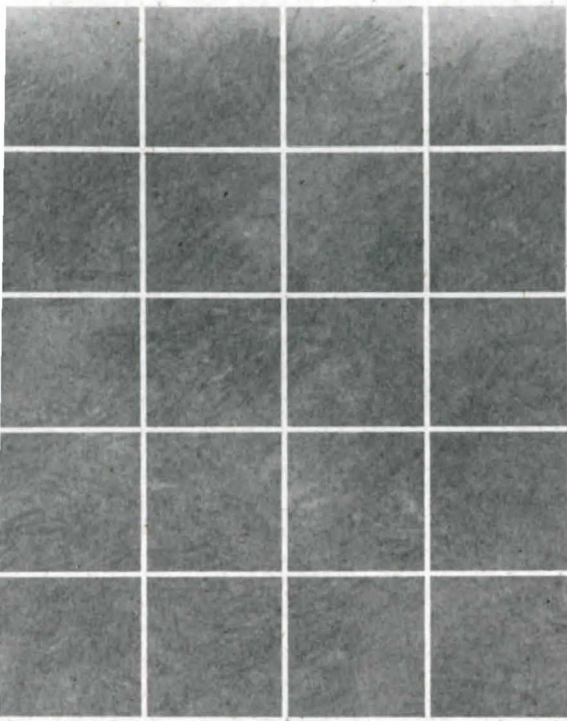
— Dr. John J. McDonough

Origins of the Museum

Over the years, various exhibition spaces have been devised at Youngstown State University for the display of student and faculty artwork. None of them has met well the pressing need for gallery space, which, for the visual arts, is analogous to a recital hall for music or a theatre for drama. A departmental gallery is essential to the goals of the YSU Art Department, serving as it does to measure the dynamic quality of faculty and student work. Such a facility not only enables the University to maintain its high standards of instruction; it also acts as a laboratory space for a future curriculum in museology and provides a context for direct community interaction and cooperation.

In response to the University's need for an artspace, Dr. John J. McDonough, a Youngstown physician and avid art collector, offered the proceeds of the sale of his painting *Gloucester Harbor* by Childe Hassam to help fund construction of a new building. With additional monies from the State of Ohio, the McDonough Museum of Art was begun in the fall of 1990.





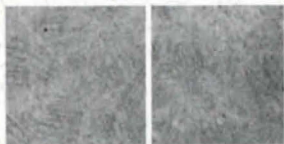
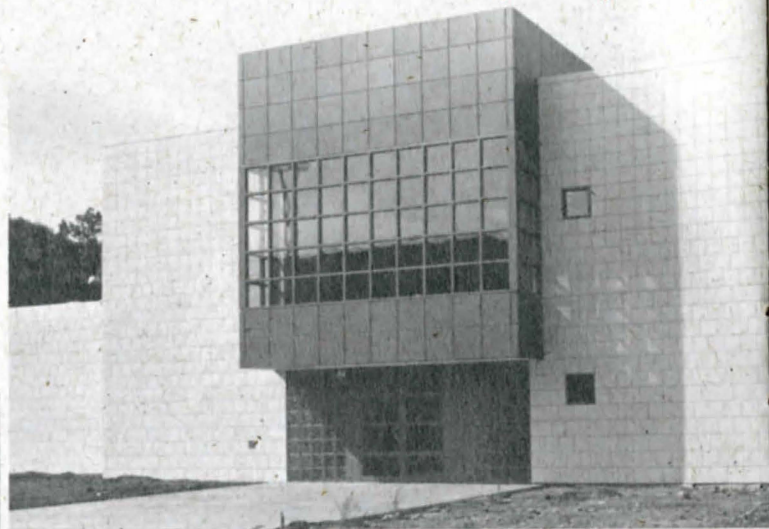
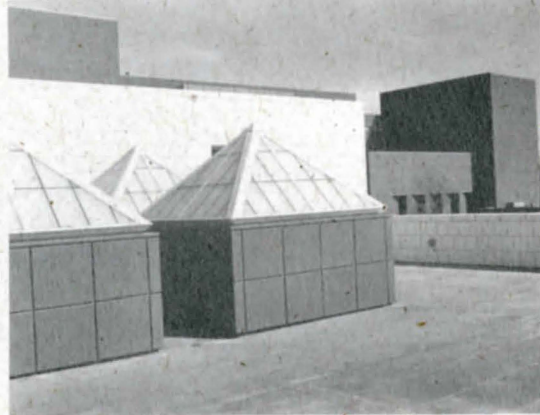
Design is the final transformation of choice to art...Design is including or excluding--not as accommodation but as meaning. It is about understanding a problem, analyzing the constraints, selecting options, and creating the object that provokes an aesthetic response and engenders an idea.

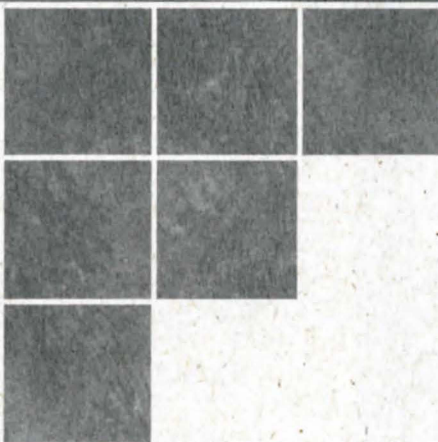
~ Charles Gwathmey
& Robert Siegel

The structure that is being dedicated today reflects innovative responses to the diverse uses to which the museum will be put. The New York design firm of Gwathmey Siegel and Associates and Youngstown's Buchanan, Ricciuti and Balog Architects worked jointly to develop the concept and structure of the building.

The primary determinant of the museum's design is the sloping site and its juxtaposition to surrounding large-scale structures. The museum is situated slightly to the south of the axis of The Butler Institute of American Art, opening an eastward sightline through to the East Side of the city. The white ceramic tile exterior is an accented counterpoint to the brick and concrete of Bliss and Meshel halls; this and the simplicity of the design provide a distinct identity for the museum. Numerous trees will create a grove effect on the museum grounds, softening the intrusive effects of the street.

The two main entrances, one on the upper ground/street level, the other on the lower ground/parking garage level, are connected by an open skylit stair gallery. This stair carries out the sweeping gesture of the building down the hillside, opening on the lower main entrance. To the north of the stair is a 48-seat lecture hall featuring state-of-the-art sound and projection equipment to be used for art history classes.





The middle level of the McDonough Museum contains two traditional galleries with finished plaster walls and carpeting. On the lower level are two installation galleries, one large two-story space and another single-story gallery adjacent to it. Both are finished in plywood with bare concrete floors to accommodate various types of art, such as works in progress, installation pieces and experimental pieces. The scale of these rooms and their more primitive surfaces allow for the display of more innovative works.

The south end of the museum features a spiral stair topped with a conical skylight which, from outside the building, creates an echo of the inside space. The conical skylight and four pyramidal skylights above the large installation gallery form permanent features of the street-level sculpture garden.

The museum will show current work by students and faculty, as well as exhibits of other colleges and universities, shows by community and regional artists, and innovative cross-disciplinary exhibits. Students interested in museum practice will have available hands-on experience in preparing, setting up and curating exhibits. In the longer term, the McDonough Museum will aid in the potential development of a University graduate program in museology.

A full-time coordinator and part-time office staff member will oversee daily operations of the museum. The museum's overall management and direction will come from the Department of Art and the dean of the College of Fine and Performing Arts.

OHIO BOARD OF REGENTS

Alva T. Bonda, *Chair*
Lloyd O. Brown, *Secretary*
Anita S. Ward, *Vice Chair*
Paul M. Dutton
Ralph K. Frasier
Elaine H. Hairston, *Chancellor*
William F. Boyle
Elizabeth K. Lanier
Jesse Philips

YSU BOARD OF TRUSTEES

John F. Geletka, *Chair*
Michael I. Monus, *Vice Chair*
Y:T. Chiu
Elizabeth C. DeLuca
James R. Dull, Jr., *Student*
Edward A. Flask
Mark E. Lyden
Richard P. McLaughlin
Martin J. O'Connell
Earnest Perry
Scott P. Smith, *Student*
Franklin S. Bennett, Jr., *Secretary*

Stephen A. Perry
*Director, Ohio Department
of Administrative Services*

Fred W. Forbes, *AIA, NSPE*
*Deputy Director, Ohio Department
of Administrative Services*

Joseph F. Busch
State Architect

SPECIAL RECOGNITION

■ ■ ■ **Mr. & Mrs. John H. Surovek, John H. Surovek Gallery, Palm Beach, Florida, for publication of the dedicatory *Selections from the John J. McDonough Collection of American Art***

■ ■ ■ **Mr. & Mrs. C. Gilbert James for the bronze sculpture "A Gathering of Emperors" by Andre Harvey**

■ ■ ■ **The Board of Directors and officers of the Mahoning National Bank for their contribution towards underwriting the costs of the reception**

ARCHITECTS

Buchanan, Ricciuti and Balog Architects
Gwathmey Siegel and Associates
New York, *Design Consultants*

GENERAL CONTRACTOR

Mike Coates Construction, Inc.

ELECTRICAL

Geller Electric, Inc.

FIRE PROTECTION

Fire Foe Corporation

HVAC

Associates Heating & Cooling, Inc.

PLUMBING

Charniga Plumbing & Heating Co.

TEMPERATURE CONTROL

Johnson Controls, Inc.

