

New dining hall is not just another place to eat

By JENNIFER T. KOLLAR
News Editor

Hungry? For the ultimate dining experience, the campus community should check out the Christman Dining Commons, the University's newest dining facility on Custer Street between Elm Street and Fifth Avenue.

The dining facility, which opened for breakfast today, "is going to be the showplace," said Charles Blackwell, Christman Dining Commons food service director.

"Among other college dining services this is the nicest facility. It's people-pleasing and offers a little bit of everything. If you can't find something to eat then you aren't hungry," Blackwell said laughing.

According to Phil Hirsch, director of student activities/auxilliary services in Kilcawley Center, the dining hall cost approximately \$1.7 million.

"It's a beautiful facility," he said. "It is well-designed. I think the residents will be really pleased with it." For a price tag like that, Blackwell said he believes students are getting a class act.

The Christman Dining Hall is open to all residence-hall students who buy a quarterly meal ticket. "But, anybody who wants to eat there can pay for meals in cash," Hirsch added.

According to Hirsch, the new dining hall has 286 seats and can feed up to 600 people.

"As the YSU residence hall population

grows, there is enough land next to the dining facility to build another residence hall. The Christman Dining Commons was built with that in mind," Hirsch said.

The new Dining Commons comes complete with trays that have the YSU logo printed on them. It offers a little something for everyone.

"We have a wide selection for everybody. No student can leave saying that they are hungry," said Henry Clacko, Christman Dining Commons' executive chef.

There are different food-specialty stations within the dining hall. Clacko said that Grills-N-Frills offers hamburgers and grilled sandwiches. Hometown Cafe is where students get their main dinner entrees.

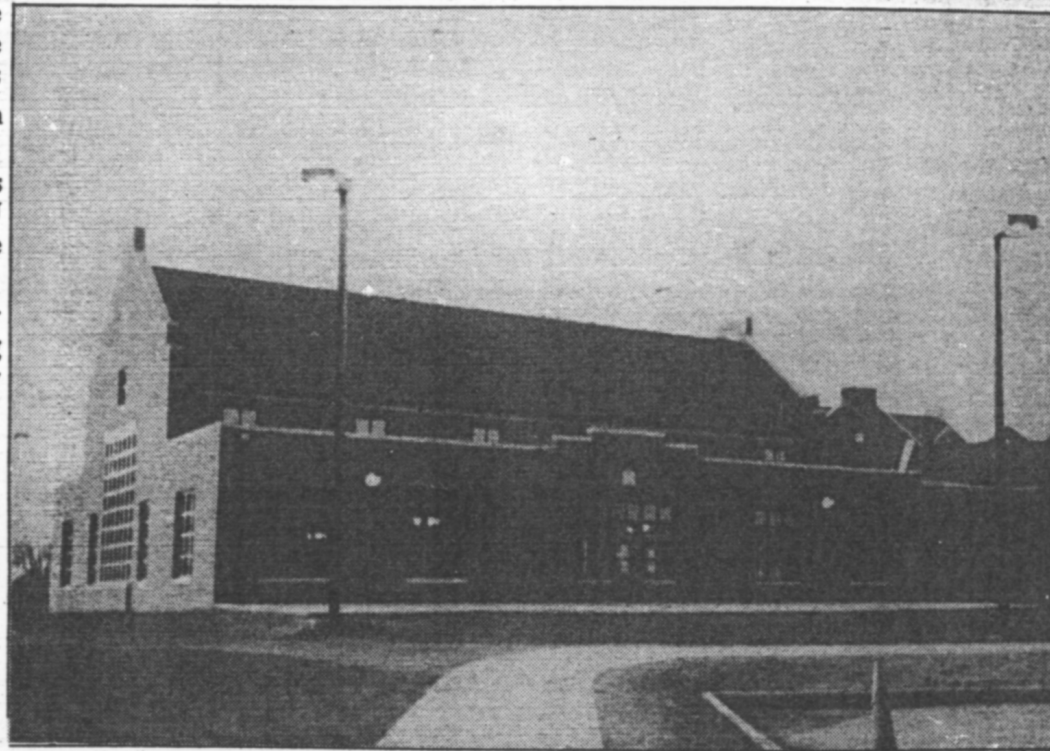
"If you don't feel like having a full meal then there are two soups all the time, breads, a salad bar, and you can make your own sundaes and ice cream cones," he said.

Pete's Arena, the deli area, offers a variety of cold sandwiches and pizza. Sweet Treats is the dessert counter. Students also can choose from a wide array of beverages. Water, sodas, coffee, tea, hot chocolate, milk and cereals are available.

John Cummins, Christman Dining Commons manager, said he believes that the dining hall is one of the finest.

"It is state of the art," said Cummins.

The hall was built with atmosphere in mind. "The windows make the hall light



JENNIFER T. KOLLAR/THE JAMBAR

New YSU dining hall: The new Christman Dining Commons, located on Custer Street between Elm Street and Fifth Avenue, is the new place to eat on campus. The dining facility opens today for breakfast. The spacious, 286-seat hall offers a wide selection of foods that allows for a pleasurable dining experience.

and airy which brings the outside in. The windows allow for a full campus view," Blackwell said.

Hirsch explained that resident-hall students can purchase quarterly meal plans. They can choose between four different plans. Students can buy a 19-meal ticket [19 meals per week] for \$595, 15

meals for \$505, 10 meals for \$395 and 5 meals for \$205. Anyone just wanting to stop in the Christman Dining Commons for a bite to eat can buy breakfast for \$3, continental breakfast for \$1.85, brunch for \$3.75, lunch for \$3.90 and dinner for \$4.40. Breakfast is served 8:30 a.m.-10:30 a.m., lunch 10:30 a.m.-3 p.m. and dinner 4 p.m.-6:45 p.m.