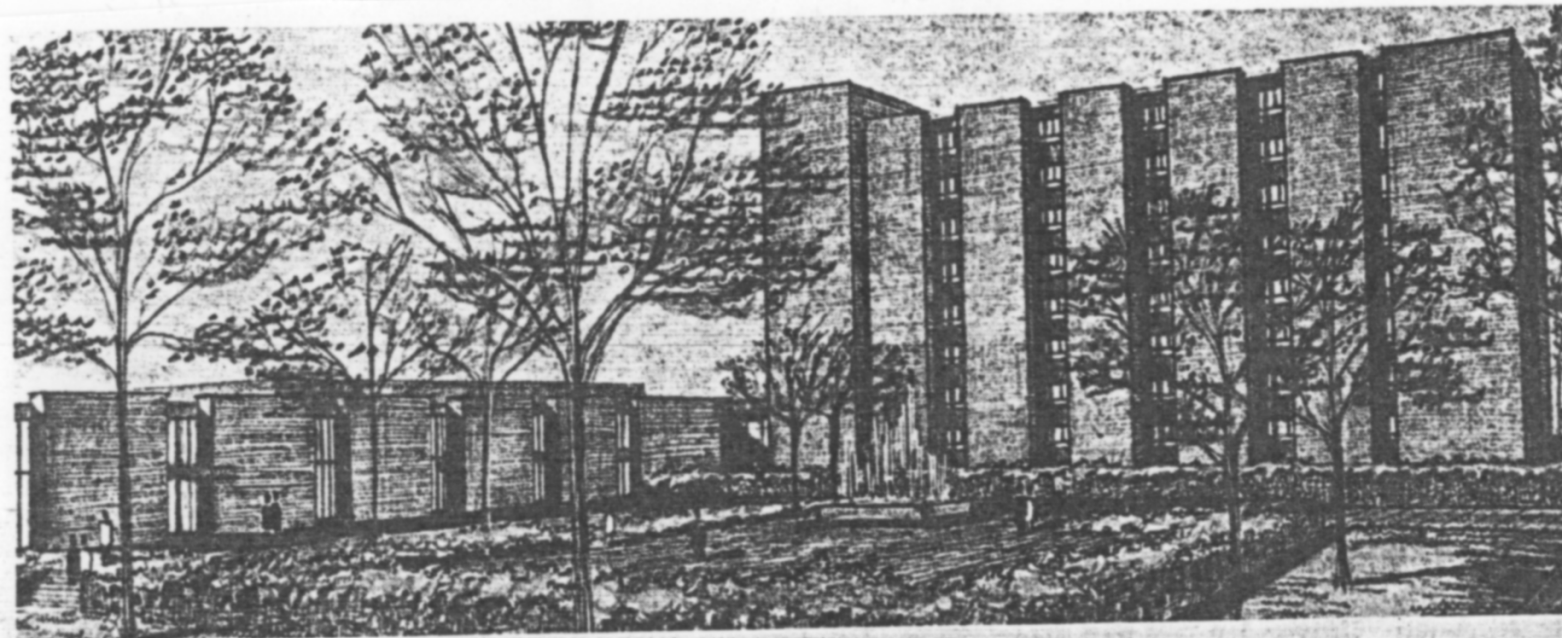


## Kilcawley Center To be Dedicated

The Planning Committee of Kilcawley Student Center has announced that the center will be dedicated on Wednesday, April 20, 1966 at 6:30 P.M.

All student organizations are invited to send two representatives and all trustees, faculty and staff are invited to attend the dedication. The cost is \$3.00, which includes a dinner. Reservations can be made at the

Cashier's Office before April 20th. Jerry Knight, Executive Secretary of the Citizens Planning Council, will be the guest speaker and music will be furnished by the Dana String Quartet.



The new cafeteria in Kilcawley Student Center is now open for student use.