

APPENDIX **C**

Basic Institutional Data

**North Central Association of Colleges and Schools
Commission on Institutions of Higher Education**

30 North LaSalle Street, Suite 2400, Chicago, IL 60602-2504
(800) 621-7440; (312) 263-0456; Fax: (312) 263-7462

Basic Institutional Data Forms

Table of Contents

Data Form A - Enrollment Trends	3-6
Part 1 - Full-time Enrollment	4
Part 2 - Part-time Enrollment	5
Part 3 - Full-time Equivalent Enrollment	6
Part 4 - Other Significant Institutional Enrollments	6
Data Form B - Student Admissions, Ability and Performance Measures and Financial Aid	7-10
Part 1 - Student Admissions	7-8
Part 2 - Ability Measures of Freshman	9
Part 3 - Ability Measures of Entering Graduate Students	9
Part 4 - Undergraduate Student Financial Aid	10
Part 5 - Graduate Student Financial Aid	10
Data Form C - Instructional Staff and Faculty	11-14
Part 1 - Full-Time Instructional Staff and Faculty Information	11-12
Part 2 - Salaries of Full-Time Instructional Staff and Faculty	12
Part 3 - Part-Time Instructional Staff and Faculty Information	13-14
Part 4 - Salaries of Part-Time Instructional Staff and Faculty	14
Data Form D - Library/Learning Resource Center	15-17
Data Form E - Computer Services	18-20
Data Form F - Certificate, Diploma and Degree Programs	21
Data Form G - Intercollegiate Athletics	22

**North Central Association of Colleges and Schools
Commission on Institutions of Higher Education**

30 North LaSalle Street, Suite 2400, Chicago, IL 60602-2504
(800) 621-7440; (312) 263-0456; Fax: (312) 263-7462

Basic Institutional Data Form A

ENROLLMENT TRENDS

DEFINITIONS

- I. Undergraduate.** This classification includes students enrolled in:
- A. Bachelor's degree programs.
 - B. Associate degree programs.
 - C. Programs leading to one-, two- or three-year certificates or diplomas.
 - D. Clearly numbered undergraduate courses taken without a specific credential as the goal.
- II. Graduate.** This classification includes those students who have attained bachelor's degrees or first professional degrees (in dentistry, law, medicine, theology, or veterinary medicine, etc.) and are enrolled in a master's, specialist, or doctoral degree program.
- III. Professional.** This classification includes students who have enrolled in a professional school or program which requires at least two or more academic years of previous college work for entrance and which requires a total of at least six academic years of college work for a degree; for example, students enrolled for a professional degree in one of the following fields: Dentistry (D.D.S.), Law (LL.B. or J.D.), Medicine (M.D.), Theology (M.Div.), Veterinary Medicine (D.V.M.) Chiropody or Podiatry (D.S.C. or D.P.), Chiropractic (D.C.), Optometry (O.D.) or Osteopathy (D.O.). All students in programs that require only four or five academic years of work (i.e., only four or five years beyond high school) for completion of the requirements for the degree should be reported as undergraduate. All students enrolled in work leading to a master's degree are to be reported as graduate even though the master's degree is required in some fields, such as Library Science and Social Work, for employment at the professional level.
- IV. Full-Time.** Use the measure the institution commonly uses to define full time student count. Provide that formula on the top of the page.
- V. Part-Time.** Use the measure the institution commonly uses to define part time student count. Provide that formula on the top of the page.
- IF THE INSTITUTION DOES NOT DISTINGUISH BETWEEN FULL-TIME AND PART-TIME STUDENTS, USE PAGE 4 INSTEAD OF PART 3 FOR REPORTING OF FULL-TIME EQUIVALENT STUDENT COUNT. PROVIDE THE FORMULA USED TO DETERMINE THAT COUNT.
- VI. Other.** Students who cannot be classified by level, including students enrolled in courses that do not lead to degrees.

**North Central Association of Colleges and Schools
Commission on Institutions of Higher Education**

30 North LaSalle Street, Suite 2400, Chicago, IL 60602-2504
(800) 621-7440; (312) 263-0456; Fax: (312) 263-7462

Basic Institutional Data Form A

PART 1 - FULL-TIME ENROLLMENT (HEADCOUNT)

Opening Fall Enrollment for Current Academic Year and Previous Two Years

Name of institution/campus reported: Youngstown State University

		Fall 95	Fall 96	Fall 97
		Two Years Prior	One Year Prior	Current Year
UNDERGRADUATE		19 <u>95</u> - <u>96</u>	19 <u>96</u> - <u>97</u>	19 <u>97</u> - <u>98</u>
Freshman	Degree oriented (Definition I-A & B)	3554	3383	3334
	Occupationally oriented (Definition I-C)			
	Undeclared (Definition I-D)			
Sophomore	Degree oriented (Definition I-A & B)	1827	1775	1807
	Occupationally oriented (Definition I-C)			
	Undeclared (Definition I-D)			
Junior		1660	1602	1490
Senior		1898	1848	1816
TOTAL UNDERGRADUATE		8939	8608	8447
GRADUATE				
Master's		306	292	310
Specialist				
Doctoral		2	2	1
TOTAL GRADUATE		308	294	311
PROFESSIONAL (by degree)				
TOTAL PROFESSIONAL				
TOTAL ALL LEVELS		9247	8902	8758
OTHER				

**North Central Association of Colleges and Schools
Commission on Institutions of Higher Education**

30 North LaSalle Street, Suite 2400, Chicago, IL 60602-2504
(800) 621-7440; (312) 263-0456; Fax: (312) 263-7462

Basic Institutional Data Form A

PART 2 - PART-TIME ENROLLMENT (HEADCOUNT)

Opening Fall Headcount for Current Academic Year and Previous Two Years

Name of institution/campus reported: Youngstown State University

		Fall 95		Fall 96		Fall 97	
		Two Years Prior		One Year Prior		Current Year	
		19 95 - 96		19 96 - 97		19 97 - 98	
UNDERGRADUATE		Resident	Extension	Resident	Extension	Resident	Extension
Freshman	Degree oriented (Definition I, A & B)	856		794		717	
	Occupationally oriented (Definition I, C)						
	Undeclared (Definition I-D)						
Sophomore	Degree oriented (Definition I, A & B)	619		493		519	
	Occupationally oriented (Definition I, C)						
	Undeclared (Definition I-D)						
Junior		547		573		450	
Senior		1141		1086		1013	
TOTAL UNDERGRADUATE		3163		2946		2699	
GRADUATE							
Master's		838		926		827	
Specialist							
Doctoral		25		27		40	
TOTAL GRADUATE		863		953		867	
PROFESSIONAL (by degree)							
TOTAL PROFESSIONAL							
OTHER		4026		3899		3566	
TOTAL ALL LEVELS							

**North Central Association of Colleges and Schools
Commission on Institutions of Higher Education**

30 North LaSalle Street, Suite 2400, Chicago, IL 60602-2504
(800) 621-7440; (312) 263-0456; Fax: (312) 263-7462

Basic Institutional Data Form A

PART 3 - FULL-TIME EQUIVALENT ENROLLMENT

Opening Fall FTE Enrollment for Current Year and Previous Two Years

Name of institution/campus reported: Youngstown State University
 Total Student Credit Hours - Audited Course Credit Hours: 15
 FORMULA USED BY INSTITUTION TO COMPUTE FTE: _____

	Fall 95	Fall 96	Fall 97
	Two Years Prior	One Year Prior	Current Year
	19 <u>95</u> - <u>96</u>	19 <u>96</u> - <u>97</u>	19 <u>97</u> - <u>98</u>
UNDERGRADUATE (See definitions I.A thru D)	9525.67	9264.27	9029.60
GRADUATE (See definition II)	417.33	438.93	426.13
PROFESSIONAL (See definition III)			
UNCLASSIFIED (See definition VI)			
TOTAL	9943.00	9703.20	9455.73

Basic Institutional Data Form A

PART 4 - OTHER SIGNIFICANT INSTITUTIONAL ENROLLMENTS

(e.g., non-credit, summer session, other)

Most Recent Sessions and Previous Two Years

Identify types of enrollment reported: Summer terms only

		Summer 95	Summer 96	Summer 97
		Two Years Prior	One Year Prior	Current Year
		19 <u>95</u> - <u>96</u>	19 <u>96</u> - <u>97</u>	19 <u>97</u> - <u>98</u>
TOTAL UNDERGRADUATE	14th day	4091	3700	3315
TOTAL GRADUATE	14th day	1092	1018	1079
TOTAL PROFESSIONAL				
TOTAL NON-CREDIT CONTINUING EDUCATION ENROLLMENTS (headcount)		4798	3624	3120*
TOTAL NON-CREDIT REMEDIAL AND DEVELOPMENTAL ENROLLMENTS (FTE)				
TOTAL OTHER				
TOTAL				

*estimated

**North Central Association of Colleges and Schools
Commission on Institutions of Higher Education**

30 North LaSalle Street, Suite 2400, Chicago, IL 60602-2504
(800) 621-7440; (312) 263-0456; Fax: (312) 263-7462

Basic Institutional Data Form B

PART 1 - STUDENT ADMISSIONS

Opening Fall Enrollment for Current Academic Year and Previous Two Years

Name of institution/campus reported: Youngstown State University

Provide as much of the following information as is available about applicants for admission in the current and previous two academic years. If exact figures cannot be supplied, careful estimates may be given. Students enrolled in a previous year should not be included as applicants in a subsequent year.

Check if appropriate: Open Admissions Institution

	Fall 1995	Fall 1996	Fall 1997
Source: LR030 Application Summary	Two Years Prior	One Year Prior	Current Year
FRESHMAN Source: LR030 Application Summary Enrollment Summary 14th Day Student Enrollment	19 ____ - ____	19 ____ - ____	19 ____ - ____
Number of applicants with complete credentials for admission to the freshman class	3,361	3,092	3,159
Number of applicants accepted	2,805	2,424	2,360
Number of freshmen applicants actually enrolled	2,045	1,858	1,915
TRANSFER Source: LR030 Application Summary Transfer Statistics Report			
Number of applicants with complete credentials for admission with advanced standing (transfer)	970	922	832
Number of advanced-standing undergraduate applicants accepted	771	747	682
Number of advanced-standing undergraduate applicants actually enrolled	549	541	534
MASTER'S Source: Graduate School			
Number of applicants with complete credentials for admission to master's programs	365	438	365
Number of applicants accepted for master's programs	314	398	328
Number of applicants actually enrolled in master's programs	231	305	262
SPECIALIST			
Number of applicants with complete credentials for admission to specialist programs			
Number of applicants accepted for specialist programs			
Number of applicants actually enrolled in specialist programs			

**North Central Association of Colleges and Schools
Commission on Institutions of Higher Education**

30 North LaSalle Street, Suite 2400, Chicago, IL 60602-2504
(800) 621-7440; (312) 263-0456; Fax: (312) 263-7462

Basic Institutional Data Form B - Part 1 Continued

Name of institution/campus reported: Youngstown State University

DOCTORAL Source: Graduate School	Fall 1995	Fall 1996	Fall 1997
	Two Years Prior	One Year Prior	Current Year
	19 ____ - ____	19 ____ - ____	19 ____ - ____
Number of applicants with complete credentials for admission to doctoral programs	3	11	10
Number of applicants accepted for doctoral programs	3	10	10
Number of applicants actually enrolled in doctoral programs	3	10	9

PROFESSIONAL	Report by degrees	Two Years Prior	One Year Prior	Current Year
		19 ____ - ____	19 ____ - ____	19 ____ - ____
Number of applicants with complete credentials for admission to professional programs				
Number of applicants accepted for professional programs				
Number of applicants actually enrolled in professional programs				

**North Central Association of Colleges and Schools
Commission on Institutions of Higher Education**

30 North LaSalle Street, Suite 2400, Chicago, IL 60602-2504
(800) 621-7440; (312) 263-0456; Fax: (312) 263-7462

Basic Institutional Data Form B

PART 2 - ABILITY MEASURES OF FRESHMEN

Name of institution/campus reported: Youngstown State University

Specify quarter/semester reported: Fall 1997

Check if appropriate: No scores used or routinely collected

A. Class ranking of entering freshmen	
Percent in top 10% of high school class	12.95%
Percent in top 25% of high school class	32.83%
Percent in top 50% of high school class	61.60%
Percent in top 75% of high school class	85.04%

C. Mean ACT scores for entering freshmen	
Composite	20.5
Mathematics	19.9
English	19.7
Natural Sciences	21.0
Social Studies	20.7

B. SAT scores for entering freshmen		
	Verbal	Math
Class average SAT score	473.4	463.9
Percent scoring above 500	50.16%	55.02%
Percent scoring above 600	21.36%	17.48%
Percent scoring above 700	3.56%	3.88%

D. Other tests used for admission or placement	
Test name	
Mean or composite	
Range	

Basic Institutional Data Form B

PART 3 - ABILITY MEASURES OF ENTERING GRADUATE STUDENTS

(Report for last full academic year)

A. Graduate Record Examination *	Range
(for total Graduate School excluding professional schools)	<input type="text"/> High <input type="text"/> Low
B. Miller Analogies Test *	Range
(for total Graduate School excluding professional schools)	<input type="text"/> High <input type="text"/> Low
C. On a separate sheet, indicate other test data used for admission to professional programs.	

***See Attached Note**

North Central Association of Colleges and Schools
Commission on Institutions of Higher Education

Basic Institutional Data Form B

Part 2 – Ability Measures of Freshmen

D. Other tests used for admission or placement

Youngstown State University uses the Test of English as a Foreign Language (TOEFL) and the Michigan English Language Assessment Battery (MELAB) for students who do not have English as their native language and have been a permanent resident, refugee, or political asylee less than one year. These test scores are not stored in our computer files facilitating reporting of the mean composite or range.

Part 3 – Ability Measures of Entering Graduate Students

A. Graduate Record Examination (GRE)

B. Miller Analogies Test (MAT)

In lieu of required acceptable undergraduate grade point averages, some of Youngstown State University's graduate departments require GRE and/or MAT scores. However, these test scores are not stored in our computer files. Therefore, the Range information requested is not readily available.

**North Central Association of Colleges and Schools
Commission on Institutions of Higher Education**

30 North LaSalle Street, Suite 2400, Chicago, IL 60602-2504
(800) 621-7440; (312) 263-0456; Fax: (312) 263-7462

Basic Institutional Data Form B

PART 4 - UNDERGRADUATE STUDENT FINANCIAL AID

(Report for last full fiscal year)

Name of institution/campus reported: Youngstown State University

SOURCE OF FUNDING		TOTAL \$ AMOUNT	NO. OF STUDENTS AIDED
FEDERAL includes * institutional match	Grants and Scholarships	5,415,278.00	3881
	Loans undergraduate	18,481,494.00	4760
	Loans graduate		
	Employment	571,311.00	351
STATE	Grants and Scholarships	3,393,512.00	3500
	Loans		
INSTITUTIONAL	Grants and Scholarships	4,497,665.00	1793
	Loans	1,396,013.00	1435
	Employment	2,331,794.00	1828
FROM OTHER SOURCES	Grants and Scholarships	4,573,563.00	2968
	Loans		
Unduplicated number of undergraduate students aided		undergraduates and graduates	10,022
Number of students receiving institutional athletic assistance			334
Percentage of institutional aid for athletic assistance			17%

PART 5 - GRADUATE AND PROFESSIONAL STUDENT FINANCIAL AID

(Report for last full fiscal year)

SOURCE OF FUNDING		TOTAL \$ AMOUNT	NO. OF STUDENTS AIDED
FEDERAL	Grants and Fellowships		
	Loans	see above	
	Employment		
STATE	Grants and Fellowships	1,166.00	1
	Loans		
INSTITUTIONAL	Grants, Fellowships, Asst.	394,717.00	178
	Loans		
	Employment		
FROM OTHER SOURCES	Grants, Fellowships, Asst.	230,193.00	255
	Loans		
Unduplicated number of graduate students aided			see above

**North Central Association of Colleges and Schools
Commission on Institutions of Higher Education**

30 North LaSalle Street, Suite 2400, Chicago, IL 60602-2504
(800) 621-7440; (312) 263-0456; Fax: (312) 263-7462

Basic Institutional Data Form C

PART 1 - FULL-TIME INSTRUCTIONAL STAFF AND FACULTY INFORMATION

Name of institution/campus reported: Youngstown State University

Specify quarter/semester reported: Fall 1997

Include only personnel with professional status who are primarily assigned to **resident instruction and departmental or organized research**. Exclude all nonprofessional personnel and those professional personnel whose primary function is not resident instruction, departmental research or organized research.

	Distribution by Sex		Distribution by Race						Distribution by Age Range			
	Male	Female	White	Black	Hispanic	Asian	Native Am.	Other	20-35	35-50	50-65	65-over
Professor	142	32	156	3	0	14	1	-	0	38	128	8
Associate Professor	76	45	108	5	5	3	0	-	4	82	34	1
Assistant Professor	62	49	98	7	1	5	0	-	24	74	11	2
Instructor	8	10	16	1	0	1	0	-	4	8	5	1
Teaching Assistants & other teaching personnel												
Research staff & Research Assistants												
Undesignated rank												
Number of instructional staff added for current academic year	11	5	13	1	1	1	0	-	4	10	2	0
Number of instructional staff employed in previous academic year, but not reemployed for current academic year	9	9	16	0	1	1	0	-	3	10	3	2

**North Central Association of Colleges and Schools
Commission on Institutions of Higher Education**

30 North LaSalle Street, Suite 2400, Chicago, IL 60602-2504
(800) 621-7440; (312) 263-0456; Fax: (312) 263-7462

Basic Institutional Data Form C

PART 1 continued - FULL-TIME INSTRUCTIONAL STAFF AND FACULTY INFORMATION

Name of institution/campus reported: Youngstown State University

Specify quarter/semester reported: _____

Include only personnel with professional status who are primarily assigned to **resident instruction and departmental or organized research**. Exclude all nonprofessional personnel and those professional personnel whose primary function is not resident instruction, departmental research or organized research.

	HIGHEST DEGREE EARNED					Prof. Degree	
	Diploma, Certificate, or None	Associate	Bachelor's	Master's	MD/GD Specialist	Doctoral	
Professor				20	2	152	
Associate Professor			1	24	1	95	
Assistant Professor				27	1	83	
Instructor				17	0	1	
Teaching Assists. & other teaching peers							
Research staff & Research Assists.							
Undesignated rank							
Number of instructional staff added for current academic year				9		7	
Number of instructional staff employed in previous academic year, but not reemployed for current academic year				6		12	

PART 2 - SALARIES OF FULL-TIME INSTRUCTIONAL STAFF AND FACULTY

	MEAN	RANGE	
		High	Low
Professor	64,430	83,972	48,000
Associate Professor	49,034	72,056	40,354
Assistant Professor	39,847	57,000	32,000
Instructor	33,787	41,000	26,000
Teaching Assists. & other teaching pers.			
Research staff and Research Assistants			
Undesignated rank			

**North Central Association of Colleges and Schools
Commission on Institutions of Higher Education**

30 North LaSalle Street, Suite 2400, Chicago, IL 60602-2504
(800) 621-7440; (312) 263-0456; Fax: (312) 263-7462

Basic Institutional Data Form C

PART 3 - PART-TIME INSTRUCTIONAL STAFF AND FACULTY INFORMATION

Name of institution/campus reported: Youngstown State University

Specify quarter/semester reported: _____

Include only personnel with professional status who are primarily assigned to **resident instruction and departmental or organized research**. Exclude all nonprofessional personnel and those professional personnel whose primary function is not resident instruction, departmental research or organized research.

	Distribution by Sex		Distribution by Race						* Distribution by Age Range			
	Male	Female	White	Black	Hispanic	Asian	Native Am.	Other	20-35	35-50	50-65	65-over
Professor												
Associate Professor												
Assistant Professor												
Instructor Limited Service	178	184	348	9	3	1	1	-	63	177	104	18
Teaching Assistants & other teaching personnel	23	24	43	2	1	1	0	-	42	4	1	0
Research staff & Research Assistants	39	51	88	1	1	0	0	-	68	21	1	0
Undesignated rank	0	1	1	0	0	0	0	-	0	0	0	1
Number of instructional staff added for current academic year limited service only	54	56	107	2	1	0	0	-	24	53	29	4
Number of instructional staff employed in previous academic year, but not reemployed for current academic year	60	46	99	2	3	2	0	-	22	52	22	10

* Age as of 10/1

**North Central Association of Colleges and Schools
Commission on Institutions of Higher Education**

30 North LaSalle Street, Suite 2400, Chicago, IL 60602-2504
(800) 621-7440; (312) 263-0456; Fax: (312) 263-7462

Basic Institutional Data Form C

PART 3 continued - PART-TIME INSTRUCTIONAL STAFF AND FACULTY INFORMATION

Name of institution/campus reported: Youngstown State University

Specify quarter/semester reported: _____

Include only personnel with professional status who are primarily assigned to **resident instruction and departmental or organized research**. Exclude all nonprofessional personnel and those professional personnel whose primary function is not resident instruction, departmental research or organized research.

	HIGHEST DEGREE EARNED					Prof. Degree	
	Diploma, Certificate, or None	Associate	Bachelor's	Master's	MD/JD Specialist	Doctoral	
Professor							
Associate Professor							
Assistant Professor							
Instructor limited service			62	225	19	56	
Teaching Assists. & other teaching pers			46	1			
Research staff & Research Assists.			86	4			
Undesignated rank				1			
Number of instructional staff added for current academic year limited service			17	70	5	18	
Number of instructional staff employed in previous academic year, but not reemployed for current academic year	1	1	20	68	3	13	

PART 4 - SALARIES OF PART-TIME INSTRUCTIONAL STAFF AND FACULTY

	MEAN	RANGE	
		High	Low
Professor			
Assoc. Professor			
Assist. Professor			
Instructor limited service	2,607	6,300	85
* Teaching Assists. & other teaching pers.		2,500	2,000
* Research staff and Research Assists.		2,750	2,000
Undesignated rank ETS			

* Graduate Assistant Quarterly Stipend

Prepare separate reports for each campus. Please add attachments and additional sheets wherever necessary.

DEFINITIONS

Full-Time Instructional Staff and Faculty Information

"Number of instructional staff added for current academic year" – Full service faculty holding full-time instructional appointments as of the Fall 1997 term that did not have full-time appointments for the Fall 1996 term.

"Number of instructional staff employed in previous academic year, but not reemployed for current academic year" – Full service faculty that held full-time instructional appointments for the Fall 1996 term, but do not have full-time appointments for the Fall 1997 term.

Part-Time Instructional Staff and Faculty Information

"Instructor" – *Limited Service* Faculty Member: Individual under a Fall 1997 term contract to teach a specified load that is less than the normal teaching load for a full-service faculty member. Such appointments are renewable for other quarters not to exceed eight workload hours in a given quarter, and no more than twenty workload hours in a given academic year without special approval.

"Teaching Assistants & other teaching pers" – Students that have a Graduate Assistant/Doctoral Fellow appointment as of the Fall 1997 term that are listed as the instructor for a Fall 1997 course.

"Research staff & Research Assists" – Students that have a Graduate Assistant/Doctoral Fellow appointment as of the Fall 1997 term, but are not listed as an instructor for any Fall 1997 courses.

"Undesignated rank" – Retired full-service faculty member who receives an Extended Teaching Service appointment as per Article 16.5, 16.6, 16.7, 16.8, 16.9 of the YSU/OEA Agreement. An ETS faculty member can teach up to 13 workload hours in an individual quarter or spread out over an academic year.

"Number of instructional staff added for current academic year" – Limited service faculty holding instructional appointments for the Fall 1997 term that did not have appointments for the Fall 1996 term.

"Number of instructional staff employed in previous academic year, but not reemployed for current academic year" – Limited service faculty that held instructional appointments for the Fall 1996 term, but do not have appointments for the Fall 1997 term.

Salaries of Part-Time Instructional Staff and Faculty

Limited Service faculty are paid according to the level of highest degree attained:

Baccalaureate degree or lower	\$425 per WH
Master's degree	\$525 per WH
Doctoral degree	\$700 per WH
MD/JD	\$700/\$525 per WH

ETS faculty are paid an amount equal to the number of workload hours taught times 1/40 of the 9-month salary that the individual would have received had he/she remained in the bargaining unit and not assumed ETS. Payment is monthly in appropriate increments.

**North Central Association of Colleges and Schools
Commission on Institutions of Higher Education**

30 North LaSalle Street, Suite 2400, Chicago, IL 60602-2504
(800) 621-7440; (312) 263-0456; Fax: (312) 263-7462

Basic Institutional Data Form D

LIBRARY / LEARNING RESOURCE CENTER

Report for current year and previous two years • Estimate if necessary (identify estimates)

Name of institution/site reported: Youngstown State University

Check here if you have specialized libraries not included in this data. If you do, please identify these specialized libraries or collections on a separate page.

	Two Years Prior	One Year Prior	Current Year
	19 <u>94</u> - <u>95</u>	19 <u>95</u> - <u>96</u>	19 <u>96</u> - <u>97</u>
A. USE AND SERVICE			
Total use of the collection (number of books or other materials circulated annually)	119,098	117,301	169,158
Total circulation to students	95,011	94,893	135,562
Per capita student use (circulation to students divided by number of enrolled students)	6.79	7.15	10.59
Total circulation to faculty	10,785	11,587	17,965
Per capita faculty use (circulation to faculty divided by number of FTE faculty)	18.96	21.65	34.69
Total circulation to Community Users	13,302	10,821	15,631
Number of items borrowed from other libraries via interlibrary loan	12,245	16,238	17,119
Number of items lent to other libraries via interlibrary loan	15,994	20,594	21,489
Hours open per week	83	84.5	84.5
On-line electronic database searches (usually mediated by library staff)	14	5	0
Total Library staff presentations to groups/classes	172	185	196
Tours and one-time presentations	172	165	151
Hands-on instruction for using electronic databases	0	20	45
Hands-on instruction for Internet searching	0	20	45
Semester-length bibliographical instruction	0	0	0
B. COLLECTIONS			
Total number of different titles in collection	1,148,574	1,177,650	1,202,580
Books and other printed materials	434,735	445,477	457,190
Print serials/periodicals	3,234	3,363	3,397
Electronic serials/periodicals	0	5	4
Other electronic materials (except serials/periodicals)	0	0	0
Microforms	588,490	601,906	612,020

**North Central Association of Colleges and Schools
Commission on Institutions of Higher Education**

30 North LaSalle Street, Suite 2400, Chicago, IL 60602-2504
(800) 621-7440; (312) 263-0456; Fax: (312) 263-7462

Basic Institutional Data Form D

LIBRARY / LEARNING RESOURCE CENTER (continued)

Name of institution/campus reported: Youngstown State University

B. COLLECTIONS (Continued)	Two Years Prior 19 94 - 95	One Year Prior 19 95 - 96	Current Year 19 96 - 97
Non-print materials (e.g. films, tapes, CDs)	9,125	10,570	11,239
Government documents not reported elsewhere	113,115	116,239	118,409
Computer software	61	95	325
Number of subscribed/purchased electronic on-line databases	35*	50*	57
Number of CD-ROM databases available for searches by students	28*	30	34
Number of subscriptions to scholarly journals	1,630*	1,625*	1,619*
C. STAFF (1 FTE Staff=35-40 hours per week)			
Number of FTE professional staff	15.75	15.75	16.75
Number of FTE non-professional staff	25.00	25.00	25.00
Number of FTE student staff	14.00	18.00	18.00
Number of other FTE staff (please explain on back)	0	0	0
D. FACILITIES			
Seating ratio (number of seats divided by student headcount enrollment)	.172	.181	.187
Number of publicly accessible computers	40	40	40
Estimated linear shelving space remaining for expansion	1,496*	1,396*	1,296*
Estimated linear feet of materials stored off-site	2,785	5,187	6,981
E. EXPENDITURES			
For staff (exclude fringe benefits):	1,373,668	1,379,269	1,442,865
Total professional staff salaries	543,103	555,561	587,051
Total non-professional staff salaries	667,940	661,053	683,809
Total student staff salaries	159,100	162,655	168,480
For collection			
Books /other printed materials	480,000	520,000	565,000
Print serials/periodicals	720,000	770,000	815,000
Microforms	50,000	50,000	50,000
Non-print materials (e.g., films, tapes, CDs)	See Line 1	See Line 1	See Line 1
Government documents not reported elsewhere	0	0	0
Computer software	See Line 1	See Line 1	See Line 1

**North Central Association of Colleges and Schools
Commission on Institutions of Higher Education**

30 North LaSalle Street, Suite 2400, Chicago, IL 60602-2504
(800) 621-7440; (312) 263-0456; Fax: (312) 263-7462

Basic Institutional Data Form D

LIBRARY / LEARNING RESOURCE CENTER (continued)

Name of institution/campus reported: Youngstown State University

E. EXPENDITURES (Continued)	Two Years Prior 19 94 - 95	One Year Prior 19 95 - 96	Current Year 19 96 - 97
Access and other services	44,838	45,420	45,228
Interlibrary loan	8,944	11,900	11,130
On-line database searches	See "other"	See "other"	See "other"
Network membership	60,300	60,583	63,000
Binding, preservation, and restoration	50,000	60,000	70,000
Production of materials (on- or off-site)	0	0	0
Other equipment and furniture purchase/replacement	14,535	49,512	97,000
Other operating expenses (excluding capital outlay)	448,342	513,086	473,166
Total library expenses	3,250,627	3,459,770	3,632,389
F. OTHER			
	YES		NO
Output measures:			
Does the library attempt to measure/record patron visits to the library?	x		
Does the library attempt to measure/record reference questions answered?	x		
Does the library attempt to measure/record user satisfaction?	x		
Does the library attempt to measure/record in-library use of other resources?	x		
Agreements and policies:			
Are there formal, written agreements to share library resources with other institutions?	x		
Are there formal, written consortorial agreements for statewide or regional use of library materials?	x		
Are there formal, written agreements allowing the institution's students to use other institutions' libraries?	x		

**North Central Association of Colleges and Schools
Commission on Institutions of Higher Education**

30 North LaSalle Street, Suite 2400, Chicago, IL 60602-2504
(800) 621-7440; (312) 263-0456; Fax: (312) 263-7462

**Basic Institutional Data Form E
INSTITUTIONAL COMPUTING RESOURCES**

Report for Current Academic Year

Name of the institution/campus reported: Youngstown State University

WorldWideWeb (WWW) URL address: www.yzu.edu

(see notes by number)

**A. ORGANIZATION, PLANNING, and POLICIES
(Please attach an organizational chart. Include names)**

- Designated administrator(s) for institutional computing?
- Designated administrator(s) for Administrative computing?
- Designated administrator(s) for Academic computing?
- Centralized computing services?
- Formal, written, and approved technology plan?
- Technology plan linked to institutional mission and purposes?
- Computing resources included in institutional strategic plan?
- Policies on the purchase, replacement, and repair of hardware?
- Policies on the purchase and updating of software?
- Institutional computing responsible/ethical use policy?
- Institutional policies that include institutional computer issues?
- Institutional policies that include administrative computing issues?
- Institutional policies that include academic computing issues?

YES	NO
(1)	
x	
(2)	
x	
(3)	
x	
x	
(4)	
(4)	
	(5)
	x
	x
	x

B. FACILITIES

- Institutional network backbone?
- Computer labs networked?
- Classrooms functionally networked?
- Multi-media computers in labs?
- Administrative offices networked?
- Academic offices networked?
- Residence halls wired?

YES	NO
(6)	
(6)	
(6)	
(6)	
(6)	
(6)	
x	

Number of non-networked computer labs 10

Total number of stations 214

Number of networked labs 30

Total number of stations 749

Type of access?

X Wired through network

 Wired ports

 Remote dial-up access

X Personal computers

X Internet

 Slip/ppp connection to WWW

**North Central Association of Colleges and Schools
Commission on Institutions of Higher Education**

30 North LaSalle Street, Suite 2400, Chicago, IL 60602-2504
(800) 621-7440; (312) 263-0456; Fax: (312) 263-7462

Basic Institutional Data Form E - Continued

C. FUNCTIONS: ADMINISTRATIVE (Place checks where appropriate) (see notes by number)

	Access Available To					Via	
	Students	Faculty	Staff	Administrators	Public	Direct Access	Remote Access (Modem) WWW
College Activity Calendar	x	x	x	x		x	x
College Catalog							
Class Schedule	x	x	x	x		x	x
Financial Aid			x	x		x	x
On-line registration	x	x	x	x		x	x
Student Academic Record	x	x	x	x		x	x

E-mail: Intra-institution? x Yes No Inter-institution? x Yes No

D. FUNCTIONS: ACADEMIC

- Computers in all full-time faculty offices?
- Computers in full-time faculty offices networked?
- All part-time faculty have access to computers?
- All divisional / departmental offices networked?
- All students required to have computers?
- Internet access available from all faculty offices
- Library access available from all faculty offices?
 - If YES, is access available to
 - the institution's library(ies)?
 - the state-wide or region-wide library system?
 - other libraries?
- Library access available from all classrooms?
- Computers integrated into instruction?
- Off-campus access?
 - If YES, is off-campus access available by
 - the institutional network?
 - the academic network?
 - the Internet?
 - If NO, plans to provide off-campus access within three years?
- Courses on Internet?
- Interactive courses in real-time (i.e., 2-way video and voice?)

YES	NO
x	
(6)	
	x
(6)	
	x
(6)	
(6)	
x	
x	
x	
(6)	
x	
x	
x	x
x	
(7)	
	(8)

E-mail:
Intra-institution? x Yes No Inter-institution? x Yes No

**North Central Association of Colleges and Schools
Commission on Institutions of Higher Education**

30 North LaSalle Street, Suite 2400, Chicago, IL 60602-2504
(800) 621-7440; (312) 263-0456; Fax: (312) 263-7462

Basic Institutional Data Form E - Continued
(see notes by number)

E. SUPPORT and TRAINING (Centralized Computing & Administrative Computing)

Number of FTE technical staff? 31.5 Number of programmers: 7.5
 Number of FTE training staff? 1 Integrated with Human Resources unit (Y/N) (9)
 Name and Title of the designated educational specialist? Donna Wainio - Coordinator
for Computer Training (10)
 Academic Computing - 4.5

F. FINANCES/BUDGET for COMPUTING (Current Fiscal Year)

Total Annual Academic Outlay, Operating Funds:	<u>900,000 (11)</u>
Total Annual Administrative Outlay, Operating Funds:	<u>\$1,159,556</u>
Capital funds available: Academic } combined	<u>4,350,000</u>
Capital funds available: Administrative }	
Amount of grants/restricted purpose funds available:	<u>1,367,986</u>
Technology fee assessed? <u>(Y/N)</u>	<u>609,110 (12)</u>
If YES, amount per academic year?	<u>(13)</u>

G. EVALUATION

Formal system of evaluation by students of academic computing?
 Formal system of evaluation by students of administrative computing?
 Formal system of evaluation by faculty of academic computing?
 Formal system of evaluation by faculty of administrative computing?
 Systems of evaluation linked to plan to evaluate overall
 institutional effectiveness?
 Results of evaluation linked to institutional planning and
 budgeting processes?

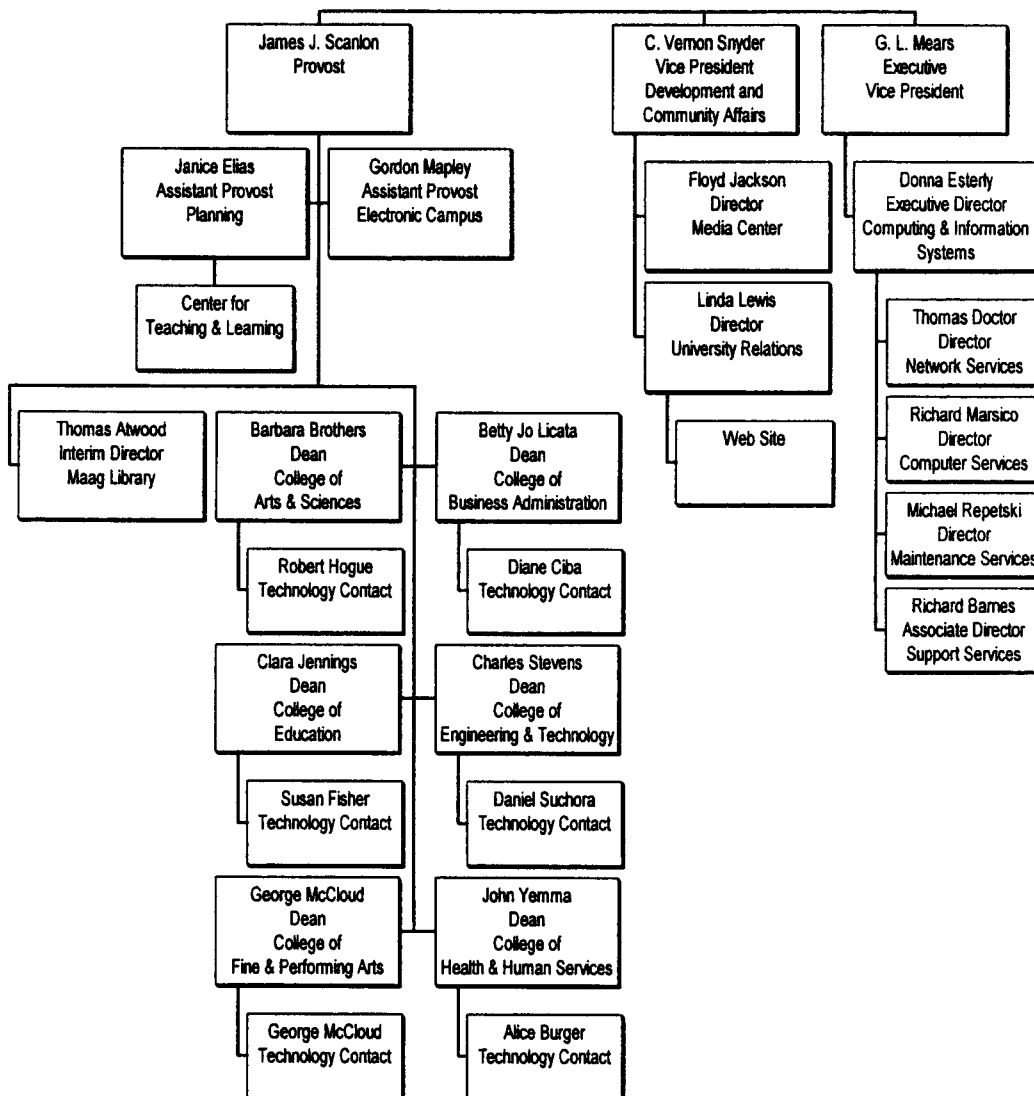
YES	NO
	x
	x
	x
	x
(14)	
(14)	

Institutional Computing Resources

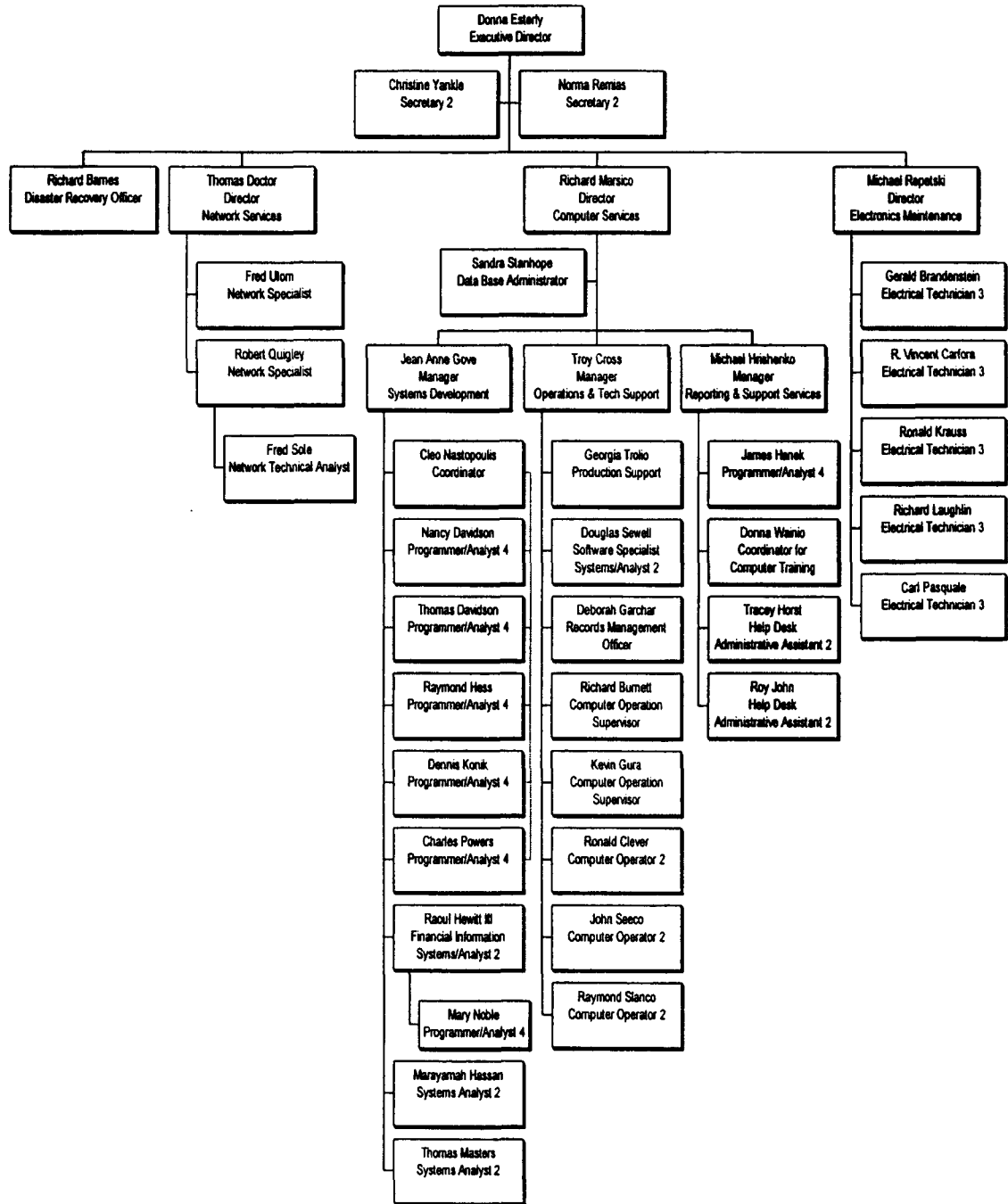
Notes

1. Gordon Mapley - Electronic Campus
Donna Esterly - Executive Director, Computing & Information Services
2. Gordon Mapley - Division of Academic Affairs
College Deans
3. College Technology Plans
4. Decisions about purchasing are decentralized to the unit. However, centralized support services, e.g. Electronic Maintenance, Help Desk, Network Services, only support select platforms and software packages.
5. A policy is under development.
6. Networking will be completed by September 1998.
7. Some faculty supplement course instruction via the Internet but courses are not offered solely over the Internet.
8. Courses are under development to be offered when facilities are available next year.
9. Human Resources Training and Development and The Center for Teaching and Learning work with the Coordinator for Computer Training to offer computer classes for faculty and staff.
10. In addition, there are individuals within colleges that serve as educational specialists.
11. This includes the funds from technology fees listed below.
12. Fees of \$25 and \$35 are attached to certain classes that use computers. The addition of a \$15 access fee for all students will add approximately \$550,000 to this amount next year.
13. See next page "Investment of Funds on Electronic Campus Projects from July 1994 through September 1998."
14. See Chapter 4 and Chapter 6 of the Institutional Self-Study Report. Planning and evaluation for institutional computing are integrated into overall planning and assessment processes of the divisions.

Computing and Technology



Computing and Information Systems



Investment of Funds on Electronic Campus Projects from July 1994 through September 1998

<u>Item</u>	<u>Investment</u>	<u>Source</u>	<u>Description</u>
Phase 1 Networking	\$1,800,000	State of Ohio - Electronic Campus Project	Network Backbone
Phase 2 Networking	\$2,500,000	State of Ohio - Electronic Campus Project	Intra-building networking
Phase 3 Networking	\$2,500,000	State of Ohio - Capital Projects Budget	Network Electronics
FY99-00 Equipment	\$1,200,000	State of Ohio - Capital Projects Budget	Desktop Computer-Related Equipment
FY99-00 Equipment	\$500,000 est	State of Ohio - Instructional Equipment	Desktop Computer-Related Equipment
FY97-98 Equipment	\$600,000 est	State of Ohio - Instructional Equipment	Desktop Computer-Related Equipment
FY95-96 Equipment	\$600,000 est	State of Ohio - Instructional Equipment	Desktop Computer-Related Equipment
Remodeling	\$100,000 est	Capital Projects - Remodeling Funds	Remodeling for DeBartolo Labs & Enterprise Server
COE Multimedia	\$200,000 est	Capital Projects - Building Funds	Auditorium and other Multimedia Rooms
Schwebel + 222 original	\$200,000 est	Capital Projects - Building Funds	Original Installation of Multimedia Equipment
State Funds Total =	\$10,200,000	Percent of Total Electronic Campus Investment =	61.49%
Enterprise Server	\$2,500,000	Capital Campaign - YSU Foundation	Heart of the Electronic Campus
Art Match	\$396,870	Beecher Funds - Capital Campaign (see notes)	From \$600,000 for Equipment in Beecher Project
Beecher Project	\$203,130	Beecher Funds - Capital Campaign	Remainder of Beecher Funds for Technology in Project
Schwebel + 222 upgrade	\$50,000	Capital Campaign	Upgrade Schwebel and ESB 222 Multimedia equipment
ESB Classroom Future	\$250,000	Capital Campaign	State-of-the-Art Multimedia Facility
ESB Computers	\$120,000	Capital Campaign	Pentiums for Engineering
COE Multimedia	\$30,000	Capital Campaign	Supplement State Funding for Auditorium Multimedia Equipment
Campaign Funds Total =	\$3,550,000	Percent of Total Electronic Campus Investment =	21.40%
NSF-ILI Chemistry	\$78,375	National Science Foundation	Integrating Computing in Chemistry
NSF-ILI Engineering	\$44,000	National Science Foundation	Integrating Computing in Engineering
NSF-ILI Physics	\$44,112	National Science Foundation	Integrating Computing in Physics
NSF Math	\$82,240	National Science Foundation	Integrating Computing in Math
OBOR English	\$232,424	State of Ohio - Technology Grants	Integrating Computing in Composition
OBOR Chemistry	\$93,095	State of Ohio - Technology Grants	Integrating Computing in Chemistry
OBOR Art	\$396,870	State of Ohio - Technology Grants	Applying Computer Technology in the Arts
Total of Grants =	\$971,116	Percent of Total Electronic Campus Investment =	5.85%
Start-up XT-386	\$130,000	Internal Reallocation	Converted XT's to 386's in Labs
DesktopPCs	\$120,000 est	Internal Reallocation	New PC's for Faculty
Schwebel + 222 upgrade	\$50,000	Internal Reallocation	Upgrade Schwebel and ESB 222 Multimedia equipment
Reallocations Total =	\$300,000	Percent of Total Electronic Campus Investment =	1.81%
College Labs	\$1,566,333	Computer Fees	Equipment & Staff to Support Courses
Computer Fee Total =	\$1,566,333	Percent of Total Electronic Campus Investment =	9.44%
GRAND TOTAL	\$16,587,449		

COE estimate is minimum

ESB estimate does not include construction expenses for conduit for network wiring, only the actual wiring

Remodeling of DeBartolo (for new labs) and Computer Center (for Enterprise Server) is a conservative estimate

Desktop PC estimate is very conservative Over half of each biennial allocation of IEF dollars has been spent on computers

**North Central Association of Colleges and Schools
Commission on Institutions of Higher Education**

30 North LaSalle Street, Suite 2400, Chicago, IL 60602-2504
(800) 621-7440; (312) 263-0456; Fax: (312) 263-7462

Basic Institutional Data Form F

CERTIFICATE, DIPLOMA AND DEGREE PROGRAMS

Previous Three Years

Name of institution/campus reported: Youngstown State University

Certificates, diplomas and degrees offered by the institution; curricula or areas of concentration leading to each certificate, diploma and/or degree; number of students graduates in the past three years. Include all fields or subjects in which a curriculum is offered. If degree programs were not in effect during one or more of the years, please so indicate. The report form may be copied if additional space is needed.

CERTIFICATE, DIPLOMA OR DEGREE	CURRICULUM OR MAJOR	GRADUATES IN PROGRAM		
		19 94 - 95	19 95 - 96	19 96 - 97
E.g., Bachelor of Arts	History	35	31	37
	See Attached			

North Central Association

Certificate, Diploma and Degree Programs

Certificate, Diploma or Degree	Curriculum or Major	1994-1995	1995-1996	1996-1997
Certificate (Awards of at least 1 year)	Emergency Medical Technology (Paramedic)	19	1	12
Certificate (Awards of at least 1 year)	Public Security & Public Safety	3	3	0
	TOTAL	22	4	12
Associate in Applied Business	Accounting Technology	8	5	2
Associate in Applied Business	Business Management Technology	10	3	5
Associate in Applied Business	Marketing Management Technology	16	5	3
Associate in Applied Business	Office Services & Administration	1	0	0
Associate in Applied Science	Civil Engineering Technology A	10	16	4
Associate in Applied Science	Computer Information Systems A	21	15	8
Associate in Applied Science	Court/Conference Reporting	1	2	3
Associate in Applied Science	Criminal Justice A	0	2	7
Associate in Applied Science	Dental Hygiene	21	26	16
Associate in Applied Science	Dietetic Technology	18	23	22
Associate in Applied Science	Drafting - Design Technology	6	3	4
Associate in Applied Science	Electrical Engineering Technology A	19	21	12
Associate in Applied Science	Emergency Medical Technology A	3	7	3
Associate in Applied Science	Hospitality Management A	16	7	10
Associate in Applied Science	Individualized Curriculum Program	2	3	1
Associate in Applied Science	Mechanical Engineering Technology A	13	16	8
Associate in Applied Science	Medical Assisting Technology	18	19	12
Associate in Applied Science	Medical Laboratory Technology	12	17	12
Associate in Applied Science	Medical Laboratory Technology - Histotechnology	0	3	3
Associate in Applied Science	Office Information Systems	16	18	10
Associate in Applied Science	Office Services & Administration	1	0	0
Associate in Applied Science	Police Science Technology	14	10	5
Associate in Applied Science	Prekindergarten Associate	31	31	25
Associate in Applied Science	Respiratory Care	17	13	0
Associate in Applied Science	Social Services Technology	3	3	3
Associate in Arts	Associate in Arts	12	10	12
Associate in Arts	Associate in Arts Business Administration Accounting	2	2	7
Associate in Arts	Associate in Arts Business Administration Finance	0	0	1
Associate in Arts	Associate in Arts Business Administration Management	0	1	9
Associate in Arts	Associate in Arts Business Administration Marketing	0	1	1
Associate in Labor Studies	Labor Studies Technology	4	3	2
	TOTAL	295	285	210
Bachelor of Arts	American Studies	0	0	1
Bachelor of Arts	Anthropology	5	7	5
Bachelor of Arts	Art History	3	1	1
Bachelor of Arts	Biology	1	3	3
Bachelor of Arts	Chemistry	1	1	1
Bachelor of Arts	Economics	11	8	10
Bachelor of Arts	English	21	22	24
Bachelor of Arts	French	0	2	0
Bachelor of Arts	Geography	5	8	5
Bachelor of Arts	Geology	0	0	2
Bachelor of Arts	German	0	0	2
Bachelor of Arts	Health Science	5	3	12
Bachelor of Arts	History	22	22	21
Bachelor of Arts	Human Performance & Exercise Science	3	0	0
Bachelor of Arts	Individualized Curriculum Program	4	5	3
Bachelor of Arts	Italian	1	0	0
Bachelor of Arts	Labor Relations	2	2	3
Bachelor of Arts	Latin	1	0	0
Bachelor of Arts	Mathematics	1	3	1
Bachelor of Arts	Music - Performance	4	2	0
Bachelor of Arts	Music - Theory	0	0	1
Bachelor of Arts	Music History & Literature	1	0	0
Bachelor of Arts	Nursing Home Administration	0	0	1
Bachelor of Arts	Philosophy	4	5	3
Bachelor of Arts	Physical Education	0	3	3
Bachelor of Arts	Political Science	16	23	21
Bachelor of Arts	Professional Writing & Editing	10	8	11
Bachelor of Arts	Psychology	63	62	60
Bachelor of Arts	Religious Study	1	5	3

Certificate, Diploma or Degree	Curriculum or Major	1994-1995	1995-1996	1996-1997
Bachelor of Arts	Russian	0	1	1
Bachelor of Arts	Social Studies	8	3	1
Bachelor of Arts	Social Work	49	43	52
Bachelor of Arts	Sociology	12	14	11
Bachelor of Arts	Spanish	4	3	1
Bachelor of Arts	Speech Communication	18	20	26
Bachelor of Arts	Telecommunication Studies	29	32	27
Bachelor of Engineering	Chemical Engineering	11	9	24
Bachelor of Engineering	Civil Engineering	27	30	21
Bachelor of Engineering	Electrical Engineering	23	24	21
Bachelor of Engineering	Individualized Curriculum Program	1	0	0
Bachelor of Engineering	Industrial & Systems Engineering	4	9	6
Bachelor of Engineering	Materials Engineering	2	5	1
Bachelor of Engineering	Mechanical Engineering	21	18	23
Bachelor of Fine Arts	Art - Studio	39	32	44
Bachelor of Fine Arts	Individualized Curriculum Program	3	3	2
Bachelor of Fine Arts	Theatre	0	0	1
Bachelor of Music	Music - Performance	6	8	9
Bachelor of Music	Music - Theory & Composition	0	0	1
Bachelor of Music	Music Education	15	13	17
Bachelor of Science	Biology	28	28	38
Bachelor of Science	Biology - Pre Med	5	10	0
Bachelor of Science	Chemistry	5	10	7
Bachelor of Science	Combined Science B	23	26	27
Bachelor of Science	Combined Science C	46	53	45
Bachelor of Science	Combined Science G	1	2	1
Bachelor of Science	Computer Science	17	14	9
Bachelor of Science	Environmental Studies	0	3	14
Bachelor of Science	Geology	8	9	9
Bachelor of Science	Individualized Curriculum Program	1	2	2
Bachelor of Science	Mathematics	9	4	10
Bachelor of Science	Physics	2	0	1
Bachelor of Science	Psychology	5	3	7
Bachelor of Science in Applied Science	Allied Health	16	20	17
Bachelor of Science in Applied Science	Applied Music	1	0	0
Bachelor of Science in Applied Science	Civil Engineering Technology B	14	14	4
Bachelor of Science in Applied Science	Computer Information Systems B	36	27	29
Bachelor of Science in Applied Science	Corrections	0	1	0
Bachelor of Science in Applied Science	Criminal Justice	1	0	0
Bachelor of Science in Applied Science	Criminal Justice B	102	118	103
Bachelor of Science in Applied Science	Electrical Engineering Technology B	20	12	20
Bachelor of Science in Applied Science	Exercise Science	1	3	17
Bachelor of Science in Applied Science	Food & Nutrition (Dietetics)	28	30	28
Bachelor of Science in Applied Science	Hospitality Management	0	2	3
Bachelor of Science in Applied Science	Human Ecology	1	1	0
Bachelor of Science in Applied Science	Individualized Curriculum Program	31	25	16
Bachelor of Science in Applied Science	Mechanical Engineering Technology B	15	13	22
Bachelor of Science in Applied Science	Medical Technology	11	13	11
Bachelor of Science in Applied Science	Merchandising Fashion/Interior Design	14	10	2
Bachelor of Science in Applied Science	Pre-Kindergarten Education	0	0	8
Bachelor of Science in Business Administration	Accounting	75	81	76
Bachelor of Science in Business Administration	Advertising & Public Relations	18	11	17
Bachelor of Science in Business Administration	Advertising Art	11	4	3
Bachelor of Science in Business Administration	Fashion Retailing	1	1	0
Bachelor of Science in Business Administration	Finance	54	43	57
Bachelor of Science in Business Administration	General Administration	7	14	17
Bachelor of Science in Business Administration	Individualized Curriculum Program	0	0	1
Bachelor of Science in Business Administration	Industrial Management	6	2	2
Bachelor of Science in Business Administration	Industrial Marketing	1	5	4
Bachelor of Science in Business Administration	Mall Management	3	2	4
Bachelor of Science in Business Administration	Management	54	53	40
Bachelor of Science in Business Administration	Marketing Management	67	63	49
Bachelor of Science in Business Administration	Public Administration	1	1	0
Bachelor of Science in Business Administration	Retail Marketing	5	4	5
Bachelor of Science in Business Administration	Transportation Management	0	0	1

Certificate, Diploma or Degree	Curriculum or Major	1994-1995	1995-1996	1996-1997
Bachelor of Science in Education	Elementary Education	126	115	108
Bachelor of Science in Education	Elementary Education - Kindergarten	8	6	4
Bachelor of Science in Education	Secondary Education - Art - Special - Certificate	3	4	1
Bachelor of Science in Education	Secondary Education - Biology	0	1	1
Bachelor of Science in Education	Secondary Education - Bookkeeping/Basic Business	0	0	1
Bachelor of Science in Education	Secondary Education - Business Education Comprehensive	2	1	2
Bachelor of Science in Education	Secondary Education - Comprehensive Communications	4	3	1
Bachelor of Science in Education	Secondary Education - Computer Science Special Certificate	0	0	1
Bachelor of Science in Education	Secondary Education - Drama/Theatre	0	1	0
Bachelor of Science in Education	Secondary Education - Earth Science	1	0	1
Bachelor of Science in Education	Secondary Education - English	10	16	17
Bachelor of Science in Education	Secondary Education - French Special Certificate	0	2	0
Bachelor of Science in Education	Secondary Education - Health Special Certificate	0	1	1
Bachelor of Science in Education	Secondary Education - History	2	1	1
Bachelor of Science in Education	Secondary Education - Mathematics	14	9	8
Bachelor of Science in Education	Secondary Education - Physical Education - Special - Certificate	8	15	5
Bachelor of Science in Education	Secondary Education - Physics	1	1	0
Bachelor of Science in Education	Secondary Education - Science Comprehensive	8	7	8
Bachelor of Science in Education	Secondary Education - Social Studies Comprehensive	31	16	25
Bachelor of Science in Education	Secondary Education - Vocational Home Economics	3	3	1
Bachelor of Science in Education	Special Education	22	34	28
Bachelor of Science in Education	Special Education - Elementary Education	0	0	1
Bachelor of Science in Nursing	Nursing - BSN	67	56	79
TOTAL		1511	1491	1506
Post Baccalaureate Certificate	English Technical & Business Writing	8	5	4
Post Baccalaureate Certificate	Philosophy & Religion	Not Offered	Not Offered	6
TOTAL		8	5	10
Master of Arts	Economics	2	4	1
Master of Arts	English	19	17	22
Master of Arts	History	8	8	9
Master of Business Administration	Executive MBA	11	0	12
Master of Business Administration	Finance	8	11	8
Master of Business Administration	General	29	19	20
Master of Business Administration	Management	8	11	12
Master of Business Administration	Marketing	8	6	3
Master of Music	Music - Education	6	2	5
Master of Music	Music Theory \ Composition	0	0	3
Master of Music	Performance	2	6	1
Master of Science	Biology	7	3	10
Master of Science	Chemistry	7	8	7
Master of Science	Criminal Justice	14	9	7
Master of Science	Mathematics	8	9	9
Master of Science in Education	Counseling	33	33	37
Master of Science in Education	Education Administration	16	16	22
Master of Science in Education	Master Teacher Elementary Curriculum	5	11	6
Master of Science in Education	Master Teacher Elementary Early Child Education	10	20	10
Master of Science in Education	Master Teacher Elementary Middle Grades	13	11	9
Master of Science in Education	Master Teacher Elementary Reading Specialist	2	10	11
Master of Science in Education	Master Teacher Gifted & Talented Education Specialist	3	5	5
Master of Science in Education	Master Teacher Secondary Art	0	2	4
Master of Science in Education	Master Teacher Secondary Biology	0	1	1
Master of Science in Education	Master Teacher Secondary Business Education	2	0	0
Master of Science in Education	Master Teacher Secondary Curriculum	8	16	13
Master of Science in Education	Master Teacher Secondary English	1	1	2
Master of Science in Education	Master Teacher Secondary French	1	0	0
Master of Science in Education	Master Teacher Secondary Health & Physical Education	1	2	2
Master of Science in Education	Master Teacher Secondary History	0	2	1
Master of Science in Education	Master Teacher Secondary Home Economics	1	2	3
Master of Science in Education	Master Teacher Secondary Mathematics	0	0	2
Master of Science in Education	Master Teacher Secondary Music	0	1	0
Master of Science in Education	Master Teacher Secondary Reading	3	3	0
Master of Science in Education	Master Teacher Special Education Early Childhood	3	5	6
Master of Science in Education	Special Education	9	11	11
Master of Science in Engineering	Civil Engineering	5	8	9
Master of Science in Engineering	Electrical Engineering	7	7	5

North Central Association

Certificate, Diploma and Degree Programs

Certificate, Diploma or Degree	Curriculum or Major	1994- 1995	1995- 1996	1996- 1997
Master of Science in Engineering	Material Science	1	2	3
Master of Science in Engineering	Mechanical Engineering	6	8	7
	TOTAL	287	290	298
Doctor of Education	Educational Leadership	0	2	1

North Central Association of Colleges and Schools Commission on Institutions of Higher Education

30 North LaSalle Street, Suite 2400, Chicago, IL 60602-2504
(800) 621-7440; (312) 263-0456; Fax: (312) 263-7462

Basic Institutional Data Form G

INTERCOLLEGIATE ATHLETICS

Name of institution/campus reported: Youngstown State University

Intercollegiate athletic programs (as opposed to intramural and/or physical education programs) involve: a) formal agreements (association, league) to compete with other institutions; b) student athletes identified as members of a particular team; and c) professional staff.

Provide the name(s) of the intercollegiate athletic associations in which the institution holds membership and the level of membership: NCAA, DI-AA, Mid-Continent Conference, Gateway Conference

FOR MOST RECENT ACADEMIC YEAR											OPERATING BUDGET FOR INTERCOLLEGIATE ATHLETIC PROGRAMS (list current year last)		
NAME OF SPORT	● OF STUDENTS PARTICIPATING IN INTERCOLLEGIATE ATHLETIC PROGRAMS		NUMBER OF ATHLETIC SCHOLARSHIPS		MEAN AMOUNT OF SCHOLARSHIP		NUMBER OF SCHOLARSHIP STUDENTS COMPLETING DEGREES		NUMBER OF STAFF (Use FTE)		1994-95	1995-96	1996-97
	Men	Women	Men	Women	Men	Women	Men	Women	Men	Women			
Basketball	20	15	13	15	in-state 7,886	out-state 11,522	1	2	3.5	3	485,708	561,068	615,603
Baseball	39		7.2				5		1.5				
CC/Track	54	28	8.82	12.8			2	4	2	2			
Football	116		63				14		8.5				
Golf	10	10	4.0	3			2	NA	.5	.5			
Soccer		25		5.5				NA		1.5			
Softball		22		8.8	↓	↓		3		1.5			
Swimming		15		5				NA		1.5			
Tennis	12	7	4.0	5.5					.5	.5			
Volleyball		15		10.8				2		1.5			
					64% for men	36% for women							