

12th Note

Published for Friends of WYSU-FM

88.5 MHz, 90.1 MHz, 97.5 MHz

Issued 12 times per year

• October 1999 •

Volume 28 Issue 10

"A bold
trio—
timbrally
ravishing."

—the Philadelphia
Inquirer

"Impeccably
stylish and
enormously
appealing."

—Reading Times

"An eminent
ensemble...
a rare
treat."

—De Stem, The
Netherlands

EAKEN TRIO TO JOIN IN *Anniversary Celebration*



The Eaken Piano Trio will be performing on Friday, October 8 at 8:00 pm in the Bliss Recital Hall.

WYSU-FM celebrates 30 years of broadcasting this October, and part of the celebration will include an appearance by the highly acclaimed Eaken Piano Trio, sponsored by WYSU-FM and YSU's Dana School of Music. The Eaken Piano Trio is a professional ensemble committed to the performance and enrichment of chamber music through concert appearances, recordings and educational programs for students of all ages. They have performed extensively across the United States, Europe and Canada, and they also maintain a busy recording schedule as well. In 1996 the ensemble's holiday radio program, *Home for the Holidays*, was heard on more than 150 stations nationwide, and that successful reception prompted its release on compact disc. That album is one of the group's eight CDs, all of which are currently available.

A self-managed ensemble, the group has been awarded distinctions from numerous organizations, including the Chamber Music America and Pennsylvania Council for the Arts. They have been featured on NPR's *All Things Considered* and *Performance Today*, and they make regular biennial engagements at Carnegie Hall.

The Eaken Piano Trio includes violinist John Eaken, cellist Nancy Baun and pianist Gloria Whitney. Their performance takes place in the Bliss Recital Hall on Friday evening, October 8 at 8:00 pm. The concert begins with Beethoven's *Trio in E-flat Major, Opus 1*, an astonishingly mature work for such an early period on his life. The second work, *Trio No. 2 in B Minor* by Spanish composer Joaquin Turina, is Turina's second work for violin, cello and piano. The luscious sonorities depict Turina's years in Paris and the influence of Cesar Franck. Fresh from their appearance at Carnegie Hall last year, the Trio continues to celebrate the Gershwin Centennial with captivating arrangements of some of Gershwin's most beloved melodies. Concluding the program is a masterpiece of the piano trio repertoire, Mendelssohn's *Trio in C Minor*, ripe with drama, brilliance, and the special lyricism innate to Mendelssohn.

The program is free and open to the public. The Eaken Piano Trio will also be performing the convocation concert at Dana School of Music earlier that day at 11:00 am. We're honored and excited to have these vibrant and talented musicians as part of our landmark commemoration this year, and hope you'll make it a point to mark your calendars for a very special evening.

Program Listings for the Month of October

	MON	TUES	WED	THURS	FRI	SAT	SUN	
Mid.						Jazz Explorations with David Evans	Jazz Explorations with Doug Butchy	
1:00								
2:00								
3:00						Jazz on WYSU	Jazz on WYSU	
4:00								
5:00								
6:00						Hearts of Space	Musings	
7:00								
8:00	Morning Edition					New Dimensions	Weekly Edition	
9:00						Weekend Edition	Weekend Edition	
10:00								
11:00	Classical Music with Barbara Krauss					Car Talk	Classical Music with Eve Fisher	
Noon						Whad 'Ya Know?		
1:00						Says You!	Pittsburgh Symphony	
2:00								
3:00	Classical Music with Michael Cervone					NPR World of Opera	Car Talk	
4:00							Living on Earth	
5:00							This American Life	
6:00	All Things Considered					Weekend ATC		
7:00						Hearts of Space	E-Town	
8:00	Classical Music	Focus	This American Live	Commentary Cate	Jazzscapes with Rick Popovich	Jazzscapes with Rick Popovich	Thistle and Shamrock	
9:00	Performance Today							Folk Festival with Charles Darling
10:00								Cinema Sounds
11:00	Classical Music Overnight					Piano Jazz	Now's the Time with Martin Berger	Classical Music Overnight
Mid.								



Sylvia Poggioli,
NPR correspondent,
based in Italy.
Photo credit: Piero
Benetazzo.

Jazz on the Weekend

Jazzscapes, with Rick Popovich Friday and Saturday, 7:00 pm

10/1 New Releases. Javon Jackson's latest Blue Note release, *Pleasant Valley*, is tonight's feature.

10/2 Kevin Hays. This young, gifted, and innovative pianist is in high demand.

10/8 Standard Transmission. Withstanding the test of time is the only, yet difficult, qualification for the tunes featured in this installment.

10/9 Grant Green. Another fine guitarist who came to prominence in the 1960s.

10/15 Listener Support I. Tonight is the beginning of WYSU's 30th-anniversary membership campaign. Please turn your listenership to jazz programming into membership. (330) 742-1481.

10/16 Listener Support II. Another evening, another chance to support the jazz programs on WYSU.

10/22 Highways and Byways. From Green Dolphin Street to Highway One, our thoroughfares have served as inspiration for songs and tunes.

10/23 Dave Holland. This multifaceted and still forward-reaching veteran bassist is featured.

10/29 Pick of the Month. Don Grolnick's 1989 Blue Note release, *A Weaver of Dreams*.

10/30 Billy Drummond. A sampling of the work of this much sought-after, 30-something drummer is featured.

Marian McPartland's Piano Jazz Friday, 11:00 pm

10/1 Charles Brown. The world lost one of its greatest blues performers when Charles Brown passed away this year. His style influenced many other blues singers, and understandably so, as he demonstrates on this *Piano Jazz* from 1995.

10/8 Teri Thornton. Vocalist and pianist Teri Thornton is celebrating the most dynamic comeback of the late 1990s. After years of obscurity and a battle with cancer, she has re-emerged on the jazz scene to perform even stronger and more surely than ever.

10/15 Listener Support for Jazz. Marian McPartland does her best to convince listeners to become members of WYSU-FM tonight. Please help as you can. (330) 742-1481.

10/22 Mel Torme. *Piano Jazz* remembers the great Mel Torme. One of the most inventive and gifted artists around, Torme wrote first-rate music and lyrics and was greatly admired by other singers, songwriters, and musicians. He shared his wit, savvy, and trademark velvet tones with Marian in this encore broadcast.

10/29 Rachel Z. Pianist and composer Rachel Z was a member of the popular jazz fusion band Steps Ahead for over a decade. On her own, she has celebrated the artistic contributions of women and ventured into the forays of smooth jazz.

Jazz Explorations, with David Evans, Friday, Midnight and Doug Butchy, Saturday, Midnight

Join David Evans on Friday night and Doug Butchy on Saturday night for *Jazz Explorations*. Each week David and Doug take you on a musical exploration into the entire realm of jazz. Sit back, relax, and enjoy two hours of some of the finest jazz music available. *Jazz Explorations*, Friday and Saturday nights at midnight, only on Classical 88.5, WYSU-FM.

Now's the Time, with Martin Berger Saturday, 10:00 pm

10/2 Dexter Gordon. "Long Tall" Dexter, among the most influential saxophonists in modern jazz.

10/9 Zoot Sims. Lively, ever-swinging tenor saxophonist in the post-Lester Young idiom.

10/16 Charles Mingus. Including the early release, "The Clown."

10/23 Johnny Griffin. The Little Giant, now an elder statesman of modern-jazz tenor but still fierce.

10/30 Joe Lovano. The tenor saxophone tradition, in good hands.

WYSU-FM Chronology

PART I 1969-1985

1969-1985

1967 Don Elser, Steve Greevich, and YSU president Albert Pugsley propose a fine arts radio station for Youngstown State University and the Mahoning Valley community

1969 At 10:00 am on October 23, WYSU-FM signs on the air at 88.5 MHz as a charter member of National Public Radio, broadcasting 12 hours daily from its studios in room 310 of the former Lake View Motel on Wick Avenue. Original staff members were:

Steve Greevich, director of telecommunications
 Bill Foster, announcer/record librarian
 Polly Golden, secretary
 Lew Moler, chief engineer
 Richard Stevens, program director

- ❖ **All Things Considered** begins in-depth news coverage for public radio
- ❖ First broadcast of **Now's The Time** with Martin Berger
- ❖ First broadcast of **Folk Festival** with Charles Darling

1971 ❖ Part of the first radio network to use satellite delivery of programs

1972 ❖ Barbara Krauss hired as student announcer/producer
 ❖ Tower height increased to 256 feet above average terrain

1973 ❖ Robert W. Peterson hired as news and public affairs director

1974 ❖ First 18-hour broadcast day

1976 ❖ Studios move from old motel to newly built Cushwa Hall

1979 ❖ Ann Cliness hired as student announcer/producer
 ❖ Tenth Anniversary celebration features live presentation by Karl Haas

1980 ❖ First 24-hour broadcast day
 ❖ First on-air fundraiser

1984 ❖ Conversion from albums to compact discs begins

1985 ❖ William Panko hired as student engineer
 ❖ Membership level system of support initiated
 ❖ **Morning Edition** added as first morning news program

WYSU Asks Listeners to Set the Pace for 30th-anniversary DRIVE

October is pledge month for public radio, and WYSU's on-air campaign will begin Friday, October 15. Once again, listeners are being asked to determine when it ends. To help cover significant increases in program costs for both NPR (up 11%) and PRI (up 23%), WYSU has set an ambitious goal of \$66,000.00. Upon meeting that goal, the drive will end. Gary Sexton, associate director, noted, "These dramatic cost increases, combined with relatively stagnant federal funding, force us to rely more each year on member support."

"Last fall, our listeners demonstrated their commitment and generosity by ending the drive a full two days ahead of schedule. We hope that, in the spirit of our 30th anniversary, our audience will respond just as enthusiastically in 1999," said Catherine Cala, development associate. Fall renewal members have received letters urging them to respond early, thus allowing their gifts to be included in the on-air total. "Every mail-in pledge allows us to spend less time on the live campaign," added Cala. The on-air campaign will also target first-time members and will feature many new premium incentives. The celebration will begin soon, so be sure to tune in!

Wysu's FOLK FESTIVAL Concert In November

Reserve Friday, November 5 at 7:30 pm for our annual **Folk Festival** concert, hosted by Charles Darling. It will again be held in Peaberry's of YSU in the Kilcawley Center. Featured this year will be Dennis Cheplick, a singer/songwriter and 12-string guitarist; Armor & Sturtevant, a contemporary folk duo based in Erie; and One Way Rider, a bluegrass band.

FOLK FESTIVAL

Cinema Sounds, with Jim Metzendorf Sunday, 9:30 pm

10/3 Star Trek: The Original Series. Each week, the voyages of Captain Kirk and Mr. Spock were accompanied by music just as bold and daring as their adventures. Alexander Courage, Gerald Fried, and Fred Steiner are some of the composers who contributed to this enduring legacy.

10/10 Joel Goldsmith. Son of the legendary Jerry Goldsmith, Joel has matured into a formidable composer in his own right. We'll devote the entire show to some of his finest work, including his music from *Kull: The Conqueror*.

10/17 New Releases. Spend an evening with **Cinema Sounds** as we listen to some of the best new soundtrack recordings.

10/24 Classic M-G-M Film Scores. This venerable film studio has produced some of the world's most memorable movies. Tune in for timeless scores from films like *Mutiny on the Bounty*, *Invitation*, and *Cimarron*.

10/31 Monster Movie Spectacular. You're certain to feel a chill in the air when we commemorate Halloween with some of the spookiest film music ever written.

WYSU-FM STAFF

Robert W. Peterson—Director of WYSU-FM
Gary Sexton—Associate Director
April Antell-Tarantine—Announcer/
Producer
Catherine Cala—Development
Associate
Michael Cervone—Announcer/
Producer
Barbara Krauss—Announcer/Producer
William C. Panko—Broadcast Engineer
Rick Popovich—Announcer/Producer
Tom Zocolo—Assistant Broadcast
Engineer

*All programs are subject to change
without notice.*

Sunday Night Folk

E-Town with Nick Forster Sunday, 6:00 pm

E-Town features live music by some of today's finest singers, songwriters, and musicians along with informative interviews and conversations revolving around today's social and environmental issues.

The Thistle and Shamrock with Fiona Ritchie Sunday, 7:00 pm

10/3 Back to Brittany. More great music from the French Celtic Fringe, including legendary names from Breton Music: Alan Stivell, Soig Siberil, Bagad Kemper, and Dan Ar Bras.

10/10 Beginning a New Song. Although Scotland's democratic traditions date back to ancient times, July 1, 1999, saw the opening of its first Parliament in almost 300 years. This historic occasion is commemorated in music, with Simon Thumire's *Music for a New Scottish Parliament*, and Sheena Wellington, who sang a Robert Burns's song at the opening ceremony.

10/17 30th-Anniversary Pledge Drive. We will be working hard tonight asking our folk audience to participate in our anniversary pledge drive. Please help out. (330) 742-1481.

10/24 New Tradition. We'll review some recent deliveries of fresh takes of traditional tunes this week.

10/31 Celtic Folklore. Songs and tunes from the Celtic lands have often been the bearers of strange myths and eerie tales. Fiona Ritchie presents a few this week. Don't listen alone!

Folk Festival, with Charles Darling, Sunday, 8:00 pm

10/3 Country Blues Masters, Part II. Raw, vital, compelling—country blues by: Blind Blake, Tampa Red, Taj Mahal, Willie McTell, Leadbelly, Cephas & Wiggins, Beale St. Sheiks.

10/10 Folk Sampler, Part LIX. Mixes folk sounds from the 1960s with more recent artists, including Glenn Yarbrough, Niamh Parsons, Knots and Crosses.

10/17 Support Your Local Folk Show. Charles Darling will be in the studio waiting for your phone call. Support folk music on WYSU-FM by calling (330) 742-1481 with your pledge. \$40 brings the long-awaited *Folk Festival Sampler*, but whatever the amount, please call!

10/24 Regional Folk. Ohio and western Pennsylvania artists are showcased; including those performing at Peaberry's on the YSU campus, Friday, November 5 at 7:30 pm: Dennis Cheplick, Armour and Sturtevant, and One Way Rider.

10/31 Celebration 31. Join the host as he begins his 31st season on WYSU-FM with a potpourri of music.

PROGRAMHOSTS

Martin Berger—Now's the Time
Bill Binning—Commentary Cafe
Charles Darling—Folk Festival
Bob Fitzer—Commentary Cafe
Dale Harrison—Focus
Jim Metzendorf—Cinema Sounds

STUDENT STAFF

Douglas Butchy—Operator
David Evans—Operator
Eve Fisher—Classical Host
Mark Fisher—Office Assistant
Erik Hendel—Operator
Teresa Haraburda—Production
Assistant
Ian Jones—Office Assistant
Geoffrey Mears—Intern
Molly McGovern—Operator
Tonya Payne—Development Assistant
Richard Sberna—Operator

New Dimensions Saturday, 7:00 am

10/2 Money Wisdom, with Suze Orman. Money can't make you happy, but *not* having it can cause problems. Subjects discussed include how to combine your self-worth with your net worth, how much should you give away, and ways you may be sabotaging your own success.

10/9 Noble Thoughts/Noble Life, with Satish Kumar. The story of a man who renounced the world at the age of nine, joined a wandering brotherhood of Jain monks, and set off on an 8,000 mile pilgrimage to the four nuclear capitals of the world to protest Bertrand Russell's incarceration and promote world peace.

10/16 Money Wisdom II. This is one of our biannual appeals for listener support of programs such as **New Dimensions**. We would appreciate your support. (330) 742-1481.

10/23 The Great Questions: Mind, Consciousness, and Meaning, with Jean-Francois Revel and Mattieu Ricard. In 1996, internationally-renowned philosopher Jean-Francois Revel and his son Matthieu Ricard, a Buddhist monk, spent ten days in the mountains overlooking Kathmandu discussing the most fundamental questions of human existence. The resulting book, *The Monk and the Philosopher*, is the basis of this discussion.

10/30 Living the Wild Life, with Jane Goodall.

NPR World of Opera Saturday, 1:30 pm

10/2 BERLIOZ: *Benvenuto Cellini*. Amsterdam Concertgebouw; Valery Gergiev, conductor. Cast: TBA.

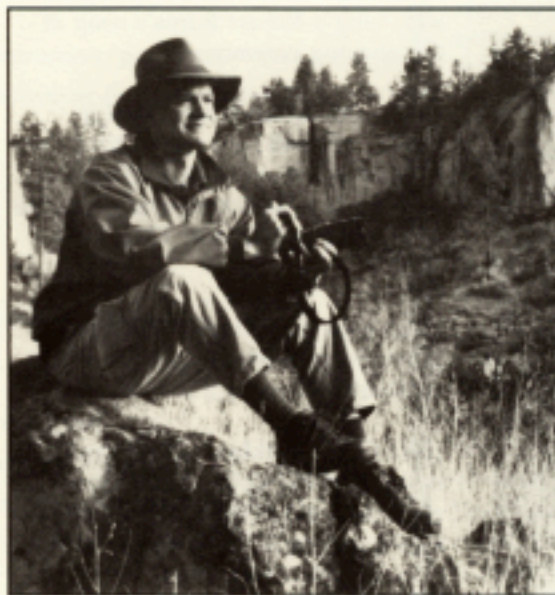
10/9 HAYDN: *Armida*. Schetzinger Festival; Thomas Hengelbrock, conductor. Cast: Iano Tamar, Thorsten Karl, Kornelia Eng. You've heard the story from Gluck and from

Handel, and now here it is courtesy of Franz Joseph Haydn. It's the tale of ultimate *femme fatale*, a politically-minded sorceress who falls in love with a man she has seduced, then chooses vengeance over love when he abandons her.

10/16 STRAUSS: *Arabella*. Houston Grand Opera; Christoph Eschenbach, conductor. Cast: Renee Fleming, Katherine Ciesinski, Jozsef Gregor, Christine Schafer. This lushly romantic drama has echoes of *Der Rosenkavalier*. The plot trades on jealousies, intrigues and mistaken identities, but love—naturally—proves the most valuable commodity of all.

10/23 VERDI: *Macbeth*. Houston Grand Opera; Simone Young, conductor. Cast: Sergei Leiferkus, Catherine Malfitano, Daniel Sumegi, Rafael Rojas. Verdi's *Macbeth* displays his unique ability to pare Shakespeare's words down to operatic scale, while through his music retaining all of the original's emotional impact, and then some.

10/30 WAGNER: *The Flying Dutchman*. Houston Grand Opera; Dietfried Bernet, conductor. Cast: Franz Grundheber, Sue Patchell, Gabor Andrasy, Patrick Denniston. Perhaps Wagner's most tautly constructed drama, the *Dutchman* may also be Wagner's ultimate paean to his favorite theme, redemption.



James Westwater has created a new art form, photo-choreography, through the innovative integration of live symphonic music and multi-image projected photography. He is the guest of the Youngstown Symphony Orchestra on Saturday, October 2 for a program entitled *The Vanishing Forest*, which includes panoramic photography of tropical rainforests choreographed to the live performance of Ralph Vaughan Williams' *The Lark Ascending*. Later in the month, on the 16th, Isaiah Jackson leads the YSO in a Mostly Mozart concert, featuring Mozart's *Symphony No. 41* and the *Serenade in D major*.

You Art, Music And Theater

THEATER 10/7-10/9 *Wit*, by Margaret Edson, Spotlight Arena Theater, 8:00 pm (matinee on 10/10 at 3:00 pm)

MUSIC 10/8 Eaken Piano Trio, WYSU-FM 30th-Anniversary Celebration, Bliss Recital Hall, 8:00 pm

MUSIC 10/17 Ronald Gould, organ, St. John's Episcopal Church, 4:00 pm

THEATER 10/20 Alvin Alley Repertory Ensemble, Powers Auditorium, 8:00 pm

ART Through 10/23 Saints and Haints: Illuminated Lives — Artists Books by Kathleen Holmes, McDonough Museum of Art

ART Through 10/23 Degrees of Presence: Paintings by Gerald Vandevier, McDonough Museum of Art

ART Through 10/23 Annual Faculty Show, McDonough Museum of Art

MUSIC 10/25 Dana Faculty Showcase Concert, Bliss Recital Hall, 8:00 pm

MUSIC 10/28 Blase Scarnati, tuba, Bliss Recital Hall, 8:00 pm

MUSIC 10/31 Youngstown Musica Sacra, St. John's Episcopal Church, 10:30 am

MUSIC 10/31 Dana Chamber Orchestra, Bliss Recital Hall, 4:00 pm

For information: 742-3624

WYSU Underwriters

SECOND NATIONAL BANK

The best ideas in banking. Yours.

A Natural Grocery Store



HUMILITY OF MARY
Health Partners



The Westminster
Scottish Festival

smith & co.
JEWELERS



UPMC Horizon

A hospital of UPMC Health System

DRUM DE SAINTS LTD.
Presents
THE EMPORIUM

#1 Donnell Ford



TIME WARNER CABLE

ROAD RUNNER
HIGH SPEED ONLINE™



MARC DANN & ASSOCIATES
Attorneys at Law



Chalet Premier
BEER WINE LOTTERY



eye care
associates, inc.

NEOTEC
Northeast Ohio Trade and
Economic Consortium

Kids on
Children's Pharmacy

M. Maurine Fogarty,
M.S., C.C.C.
Speech Therapist



Niles Iron & Metal Company, Inc.

Super PHARMOR

TSL Tri-State Laboratories, Inc.
Forensic & Environmental Services



Commercial Intertech

TIAA-CREF

HEALTH CHOICES NETWORK
Supporters of
New Dimensions



THE ASSUMPTION VILLAGE
Bel-Park Anesthesia Associates, Inc.

STRUTHERS BEER AND WINE CENTER

BELMONTEYE CLINIC, INC.

ALTEL®

Peace Action Council of Youngstown
Hersh Exterminating Service, Inc.

ADAMAS Jewelry & Gifts

Youngstown State University
WYSU-FM
Youngstown, Ohio 44555-3363

Non-profit Org.
U.S. Postage
PAID
Permit 264
Youngstown, Ohio

USEFUL NUMBERS

Car Talk

Box 3500, Harvard Square
Cambridge, MA 02228
Show: (888) CAR-TALK
Stuff: (888) CAR-JUNK

Classical 24

mail@mpr.org

Focus

Comments & Program
Suggestions
focus@cc.yzu.edu

Hearts of Space, Inc.

Info Line (415) 242-8899
info@hos.com
www.hos.com

Jazz After Hours

www.kuow.org/jazz
jwilke@u.washington.edu

Living on Earth Comment Line

(800) 218-9988
loe@npr.org

Morning Edition

Listener Comment Line
(202) 842-5044

National Public Radio

(202) 414-2000
Fax (202) 414-3329
www.npr.org
atc@npr.org
watc@npr.org
wesat@npr.org
wesun@npr.org

NPR Transcripts & Tapes

(877) NPR-TEXT
www.npr.org/inside/transcripts

New Dimensions

P.O. Box 569
Ukiah, CA 95482
Cassettes (800) 935-TAPE

Performance Today Comment Line

(202) 842-3522
perftoday@npr.org

Piano Jazz

For recordings:
(800) 551-5299

Public Radio International

(612) 338-5000

Public Radio Music Source

www.75music.org

StarDate

(800) STARDATE

Whad'Ya Know?

whadyaknow@vilas.uwex.edu

The Writer's Almanac

www.almanac.mpr.org

WYSU-FM

Youngstown State University
Youngstown, OH 44555
(330) 742-3363
www.wysu.org
sexton@wysu.org

