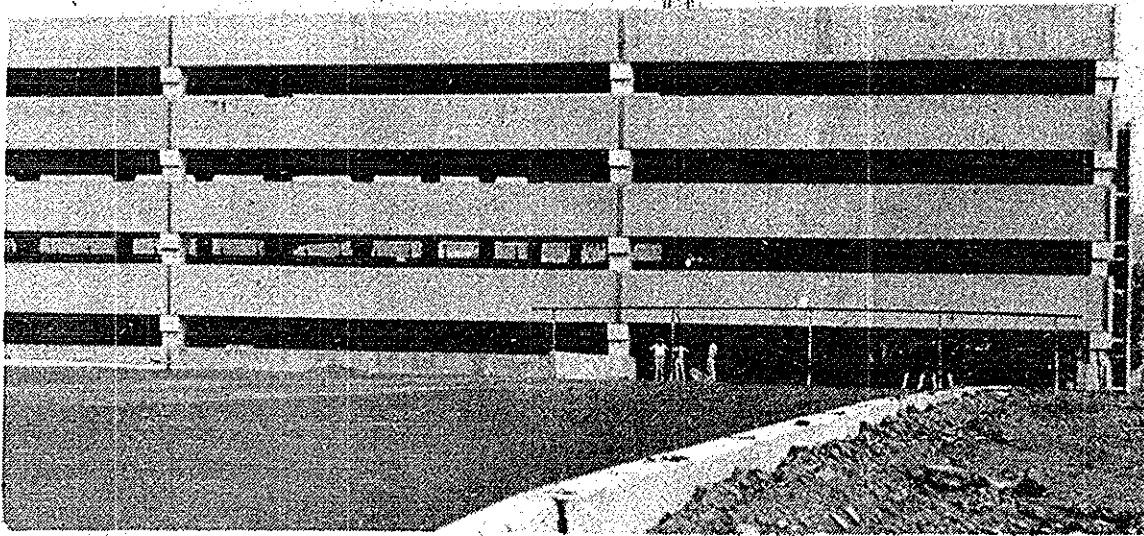


# the jambar

Youngstown State University

Tuesday, September 26, 1978

Vol. 59 - No. 1



Bob Camp

ALMOST - - - The new parking deck on Wick has partially opened, and can accommodate nearly 1000 cars. The deck has compensated a loss of about 700 spaces behind Beeghly where the new sports complex will be located. When complete the parking deck will provide approximately 1100 parking spaces for students and faculty. The estimated time of opening is mid February.

## 5125 parking spaces open for student and faculty use

by Barbara Janesh

Approximately 5125 parking spaces and some new parking regulations are greeting students and faculty as they return to school this week.

The first section of the new parking deck (located between Wick Avenue and Walnut, just south of the old Arts and Sciences Office Building) now provides nearly 1000 parking spaces, said Donald M. Minnis, director of auxiliary services.

The old deck (corner of Lincoln and Fifth Avenues) can accommodate 1250 cars, and the lot behind Beeghly Center has room for over 800 autos.

"We figure we need roughly 5000 parking spaces for faculty, staff and students," said Minnis. He estimates that of the 5125 available, 2340 are designated for student use only, 485 for faculty and staff, and 2200 for all three.

Minnis stated that although an average of 8000 students purchase parking stickers each fall quarter, there is no shortage of available parking spaces.

To support this claim Minnis cited a study made last fall. During every hour of a normal two-week period when school was in session, a count of the number of cars parked in each University lot was taken. There was no time when all of the available spaces were in use.

In addition to the 5125 spaces provided for faculty and students in the University lots, 2000 are available in the Republic Steel lot on Market Street, south of downtown Youngstown.

Parking in the Republic Steel lot and bus transportation to and from the University are free upon presentation of a YSU student ID. The bus leaves the lot at 7:40 a.m. and every half hour

after that until the lot closes at 6 p.m. It stops on W. Commerce Street across from Higbee's, on Lincoln Avenue in front of Ward Beecher and at Cushwa Hall, and on Spring Street at Kilcawley Center and Central Services.

In addition, as part of the changes in parking regulations, the 485 spaces designated for faculty and staff use only, will be available for student use after 3 p.m. Previously, students were permitted to park in these lots only after 5:30 p.m.

Other parking regulation changes have resulted in the designation of three University parking lots as "mixed," to accommodate students, faculty, and staff. These areas are: the new parking deck, the parking lot behind Beeghly Center, and the parking lot on Wick Avenue across from Ursuline High School.

The price of parking permits is now \$20. Those students who wish to purchase one may do so at the Bursar's Office, first floor, Jones Hall.

Non-permit holders wanting to park in University lots will be charged \$1.50 per day. Between 9 a.m. and 3 p.m. these people will be admitted only to the Wick Avenue lot across from Ursuline High School. After 3 p.m., non-permit holders must use the parking deck at Lincoln and Fifth Avenues.

Minnis stated that this change was not made to coerce students into purchasing a parking permit, but rather to "make it as convenient for permit holders as possible." He explained that students paying for parking on a daily basis slow down the flow of traffic into the lots, often delaying students with parking permits.

## New students may find help

If you are a new student going through the rigors of your first day at YSU, this newspaper may become one of your closest allies. It will help to tell you what is going on on campus, who is making news and what the future holds.

The reading of *The Jambar* will also be your first exposure to the wide world of the YSU media. When one thinks of the world media, you would immediately think of television, radio and the print media. The University has examples of all three.

Representing the print media, there is the *Jambar*, the campus newspaper which is published bi-weekly; *The Neon*, the YSU yearbook which is published once a year; *The Polyglot* the YSU foreign language newspaper which is published once a quarter; and the *Penguin Review*, the YSU literary magazine.

The campus also has its own radio station and is a member of

a consortium with two other Universities in the production of television programs for UHF channels 45 and 49.

WYSU-FM radio facilities are housed in the basement of Cushwa Hall, as the facilities for the YSU TV-Center. A commercial fine arts broadcasting station, WYSU-FM employs a staff of students to assist in operations. The station employs students with the capabilities to take part in a broadcast environment.

The YSU TV-Center also employs a staff of students, which mainly, come from a seminar sponsored by the department of speech communication held during spring quarter. The center serves as a production house for programs which are aired over UHF channels 45 and 49.

Of the print media *The Jambar* is the most familiar. The student

is entirely run by students and a campus advisor. A paid staff of editors head each of the individual departments with students used to fill the staff, writers and photographers. *The Jambar* is always looking for additional people to help fill the staff to assist in the make-up and writing the paper. The paper is published two days

a week, Friday and Tuesday, with the make-up of the paper occurring on Mondays and Thursday nights.

Another form of the print media is the YSU yearbook, the *Neon*. The *Neon* had a staff of between eight and ten students with editor in charge of the operations. They are currently looking for both photographers and staff members for the coming year. Both the *Neon* and the *Jambar* are currently housed in Rayen Hall.

Another form of the print media is the *Penguin Review* the

## OCSEA majority rules

### Strike averted by YSU's classified employees

YSU's classified employees, at a meeting scheduled by the OCSEA (Ohio Civil Service Employees Association) bargaining unit for the employees, voted to extend a strike deadline to Wednesday, October 4. The extension was approved by an overwhelming majority of the members present in order to give the rank and file a chance to read the proposed settlement.

The settlement, which negotiators for the OCSEA expect to reach today, includes a

grievance procedures, study leaves, a seniority sign-up system for vacations, provision for a safety officer, greater access to and control of personnel files by employees, and one fee remission for those workers who attend YSU.

The items yet to be settled are minor language problems said Dr. William Swan, YSU education professor and negotiator for the employees. Swan told the assembly the sides were only a few hours away

from agreement.

The meeting was marked by emotional outbursts by both the pro-strike and anti-strike factions within the membership. The meeting ended with many of those favoring a strike already absent from the auditorium.

Negotiations have been continuing since February, when the Court of Appeal ruled that the OCSEA was an acceptable agent for University Classified personnel. This will be the

first contract for these employees, who include both full and part time personnel (excluding faculty), administration, supervisors, confidential employees, management level employees, members of the security force and intermittent employees.

Special  
fire photos  
page 4

Welcome to  
fall quarter  
on the inside

## Committee to appoint candidates to vie for Homecoming 78 throne

To highlight the upcoming Homecoming weekend, which will be held on Oct. 18-21, the 1978 Homecoming Committee brings back to YSU the traditional Homecoming King/Queen Competition.

The King/Queen Competition at the YSU Homecoming has been re-established in an effort to provide university recognition to Junior and Senior YSU students who have been active in university and community affairs and who have excelled academically. The selection process will focus on student contributions to the university and community, and will not focus exclusively on appearance.

The selection process for the King/Queen will begin on Mon., Oct. 2 when applications will be distributed from the Student Activities offices located on the second floor of Kilcawley Center. Candidates must be nominated by a full time student and must fill out and return an application form along with a petition containing the signatures of 60 YSU students. The completed applications and petitions must be returned to the Student Activities office no later than 3 p.m. Wed., Oct. 4. Late applications will not

be considered.

All applications will then be thoroughly checked, screened and scored by a point system which was derived by the King/Queen Committee. Points will be based on extra-curricular activities, scholarship, community involvement, and university recognition awards. The top 6 scoring King and Queen applications will then be selected as Semi-Finalists.

A private interview session on Tues., Oct. 10 at 7 p.m. will bring the 12 Semi-Finalists in front of 5 judges. The judges will be members of the YSU Board of Trustees, Administrators, and Alumni. Each candidate will be questioned by the judges. From their ability to respond effectively to these questions, along with their demonstrated poise, the judges will then select the final 3 King and 3 Queen candidates for the 1978 Homecoming Court.

Voting for King and Queen candidates will take place on Tues., Oct. 17 and Wed., Oct. 18 in the Kilcawley Arcade from 9 a.m.-4 p.m. and 5 p.m.-8 p.m. Voting will be open to all YSU students.

The King and Queen Court will be present at a series of public appearances that will

begin on Fri., Oct. 20 at the Friday Night Dance. On Sat., Oct. 21, the Court will participate in the Homecoming Parade, which begins at 10:30 a.m., and the Car Caravan which will follow the YSU Football team to the Fitch Stadium, where YSU will face Akron University. The 1978 Homecoming King and Queen will both be crowned at the game's half time. Later that evening, the King, Queen and their court will be honored again at the Alumni-Collegiate Dance held at the Mahoning Country Club, at 9:30 p.m.

Every applicant must be available for all of the dates for the Homecoming festivities. Each student is urged to take a part in the voting for their favorite King and Queen candidate.

With Youngstown College marking its first football season in the fall of 1938 with a 4 game win, so did it also mark Youngstown's first Homecoming. Margaret Wylie was honored by Youngstown College by being selected as its first Homecoming Queen with Marie Barrett and Rachel Brown attending Miss Wylie as the Queen's Court. The year 1951 brought to Youngstown University its first Homecoming King, Mark Markos.

### Summer Round-up

- June 15 YSU and Mid-Continent Athletic Conference rejected in bid to be reclassified in NCAA Division I-AA. Conference members remain in Division II pending appeal
- June 17 Spring quarter commencement ceremonies held? 965 awarded degrees.
- June 17 Board of Trustees approves increases in general fee, Parking permit fee, fines, late registration, schedule changes and residence hall fees. General Fee goes to \$55? parking fee is \$25? late registration increased to \$30.
- June 29 Athletic Director Paul Amodio quashes rumors about possible acceptance of same post at University of Louisville? assures *Jambar* he has no intention of leaving YSU.
- July 5 Common Pleas Judge Charles Bannon rules that expenditures questioned by State Auditor Fred Rich are indeed justifiable and legal. Action taken in reply to declaratory judgement sought by Board of Trustees after auditor Rich questions \$6000 in various expenditures made by President Coffelt.
- August 2 Robert L. Pegues, former Superintendent of Schools in Youngstown, appointed YSU liaison with Youngstown Public Schools.
- August 8 Groundbreaking ceremonies held for YSU All-Sports Complex; Governor Rhodes, Mayor Richley attend.
- August 9 North Central Association of Colleges and schools continues accreditation of YSU's academic program for next ten years.
- August 26 Summer quarter commencement ceremonies held. 620 awarded degrees.

### Dental hygiene clinic services offer low cost treatment for all students

A dental hygiene clinic located on campus has services to offer both the off-campus community as well as student and faculty.

The services include an oral examination, x-rays, which are forwarded to the patient's regular dentist if an address is provided, cleaning and polishing teeth and fluoride treatment. In addition, the patient gets a tooth brush kit, all for the nominal fee of \$3 to cover costs.

The dental hygiene clinic is open to the general public as well as the campus community, and often caters to nursing home residents and public and parochial school children. An appointment may be made by calling 742-3327.

The clinic is operated as part of the Allied Health Program in the College of Applied Science and Technology.

Two classes of 32 girls each operate the 16-cubicle clinic each quarter as part of a two-year program resulting in an Associate in Applied Science degree.

One dentist and one registered dental hygienist are on duty at all times. Each girl's work on each patient is checked by one of these people. This may result in a slightly longer appointment, but the average visit is only about an hour, de-

pending on the patient's regular dental hygiene.

About the training program, Donna Sullivan, one of the registered hygienists, said, "Right now, we have 100% placement."

"I would place them (Dental Hygienists) on an (income) level with registered nurses," added Sullivan. She added that the department of Allied Health maintains an active file of dentists looking for trained hygienists.

Glenda McElhaney, who will be a member of the first class to graduate from the program this June, says that she was originally in education, but switched to dental hygiene because of the poor job market for female elementary teachers.

She thinks it is now easier to get into the program than when she entered it two years ago, judging from the flood of applications then.

While every girl is getting placed now, employment opportunities will gradually slow down as openings are filled, says Sullivan.

The program, however, covers the tri-county area including Western Pennsylvania. The nearest program is in Cleveland, she added.

The clinic is open five days a week, 8 a.m. to 5 p.m., but closed during the summer.

**Welcome Freshmen**

**SPECIAL BACK TO SCHOOL PROMOTION**



**YSU**

**T-SHIRTS**

**\$ 2.98 EA.**

**Get your supply for the school year**

**Assortment of Colors:**

- White
- Powder Blue
- Green
- Navy Blue
- Maroon

**YSU BOOKSTORE**

**KILCAWLEY CENTER**

### New electors encouraged in voter registration drive

There will be a voter registration drive coinciding with the student organization fair in Kilcawley Center Arcade on Wednesday from 9:30 a.m. to 2:30 p.m.

Secretary of State Ted W. Brown today urged continued diligence in meeting the goal of 200,000 new voter registrations by the close of registration Oct. 7.

"We have had a tremendous effort put forth by many divergent groups with the goal of maximum voter registration in mind," Brown said. "But efforts must be redoubled in these last two weeks in order to ensure that every eligible Ohioan has the opportunity to vote Nov. 7."

Brown said that citizens

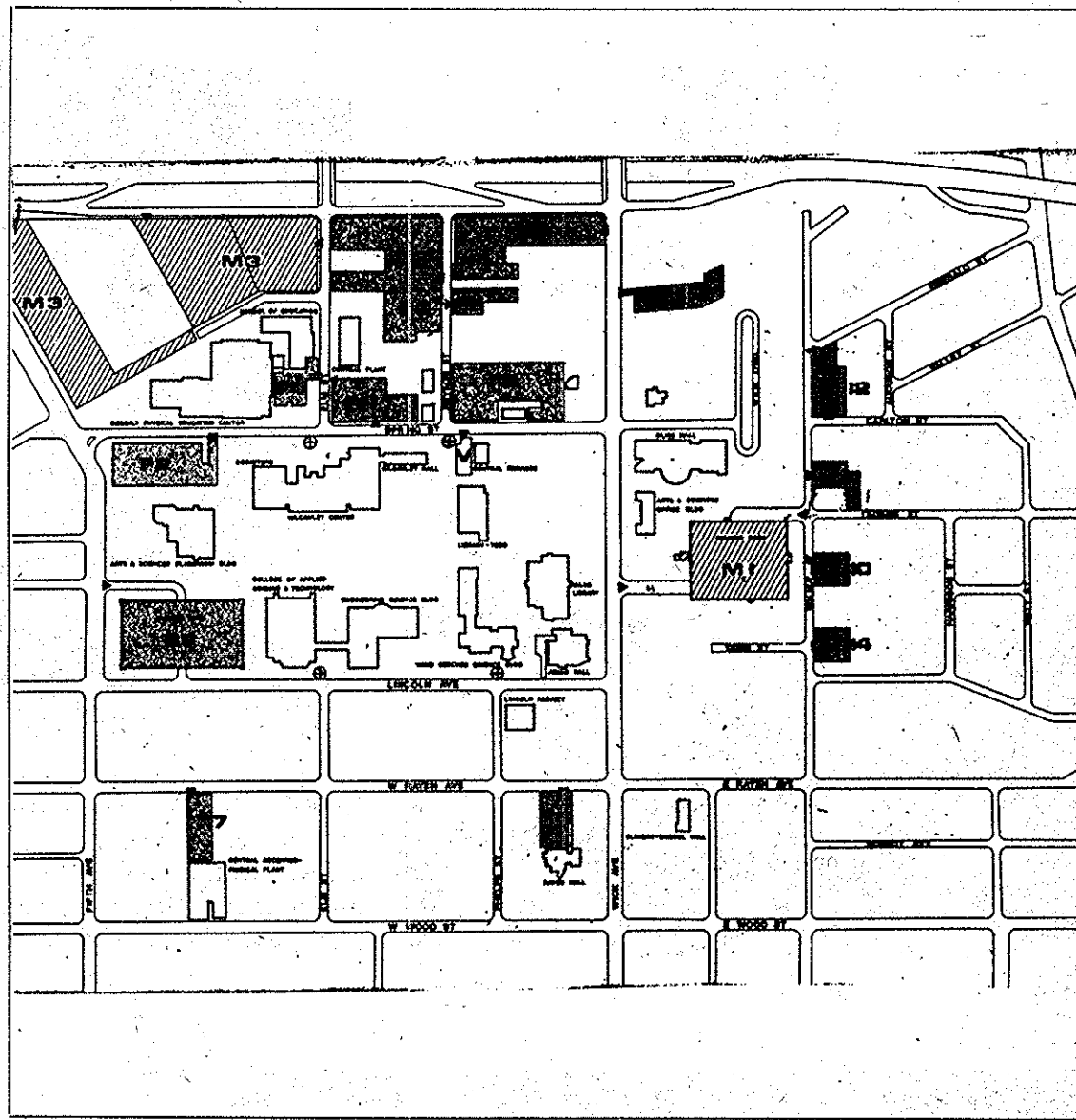
who are not now registered to vote need only call or write their county boards of elections and voter registration materials would be sent to them.

"I would urge all those persons who are not registered to vote to call their boards of elections today," Ted Brown said. "But, voters should remember that the completed registration forms must be received at their county boards of elections by Oct. 7 in order to be valid for the Nov. 7 election."

Brown added registration forms received after the cutoff date would be valid for all elections held 30 or more days following the boards' receipt of the registrations.

Those students who are planning to participate in on-campus job interviews this year are strongly urged to attend one of the interview seminars listed below. No appointment is necessary, and the seminars are identical, so students are advised to attend whichever is most compatible with their schedule. All seminars will be held in Jones Hall, Room 308.

- Wednesday, Sept. 27 7:30-8:30 p.m.
- Thursday, Sept. 28 12 noon-1:00 p.m.
- Thursday, Sept. 28 6:30-7:30 p.m.
- Monday, Oct. 2 2:00-3:00 p.m.
- Thursday, Oct. 5 12 noon-1:00 p.m.



This box shows available parking areas on Youngstown's campus. Striped areas are mixed student/faculty lots, F3, F2, F8, and F9 are faculty lots. All others are student lots. Student lots not shown are S9 (Republic Steel lot) and M2 (on Wick Ave.).

**The YSU Athletic Department welcomes you to a new school year!**

**For the thrills and excitement of college football, don't miss**

**the nationally-ranked**

**PENGUIN'S HOME OPENER**

**Sat., Sept. 30, 7:30, pm, Fitch Stadium**



\*\*\*\*\*  
**YSU**

**VS**

**SAGINAW VALLEY**  
\*\*\*\*\*

**Your student I.D. is your ticket to every home game !**

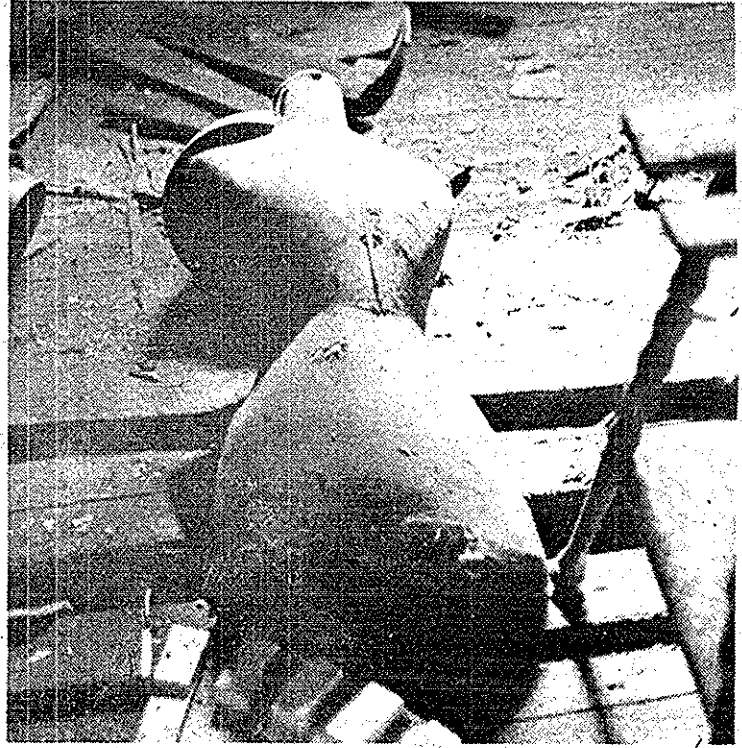
**Remaining Home Games:**

- Oct. 7 Eastern Illinois 1 pm
- Oct. 21 Akron (Homecoming) 1 pm
- Oct. 28 Villanova 7:30 pm
- Nov. 4 Northern Michigan 7:30 pm

\* Cage-ball competition between YSU fraternities and sororities at halftime of the Saginaw Valley game.

\* All home games played at Austintown Fitch Stadium.

# FIRE



Bob Camp

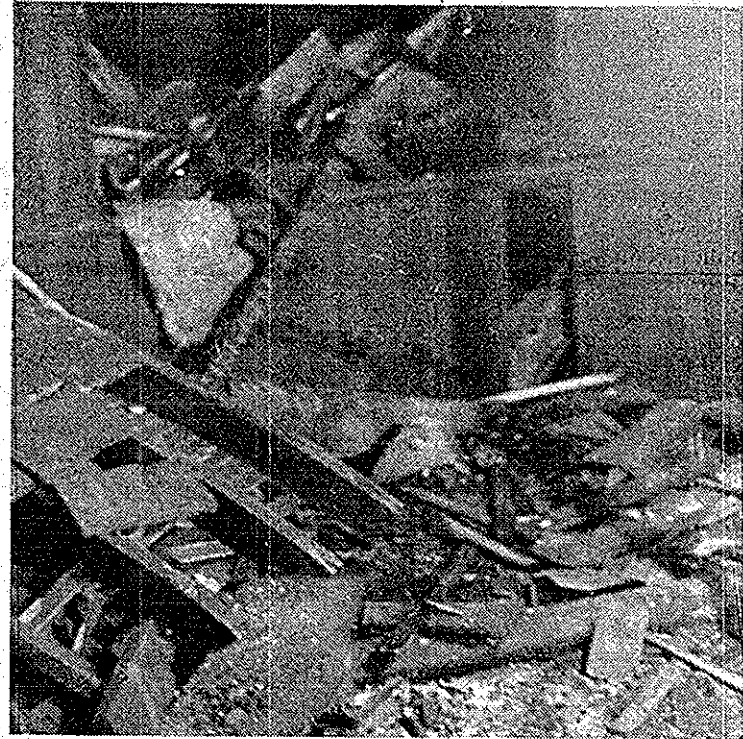


Dan Pressley

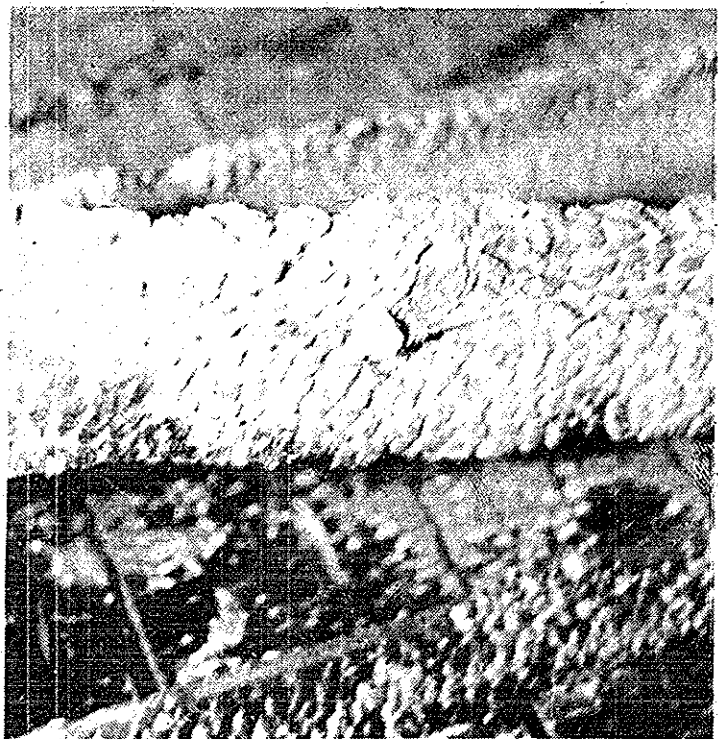
HOME - - - Fire swept Rayen Hall, home of the *Jambar* offices, on Friday. Although the *Jambar* was undamaged, Rayen Hall suffered an as of yet, undetermined amount of damage as shown in these pictures. Clockwise from left: the attic with the fire's only "victim"; unidentified official runs from building with non-working fire extinguishers; portions of the ceiling above the second floor; lightbulbs, stored in the attic, survive the inferno.



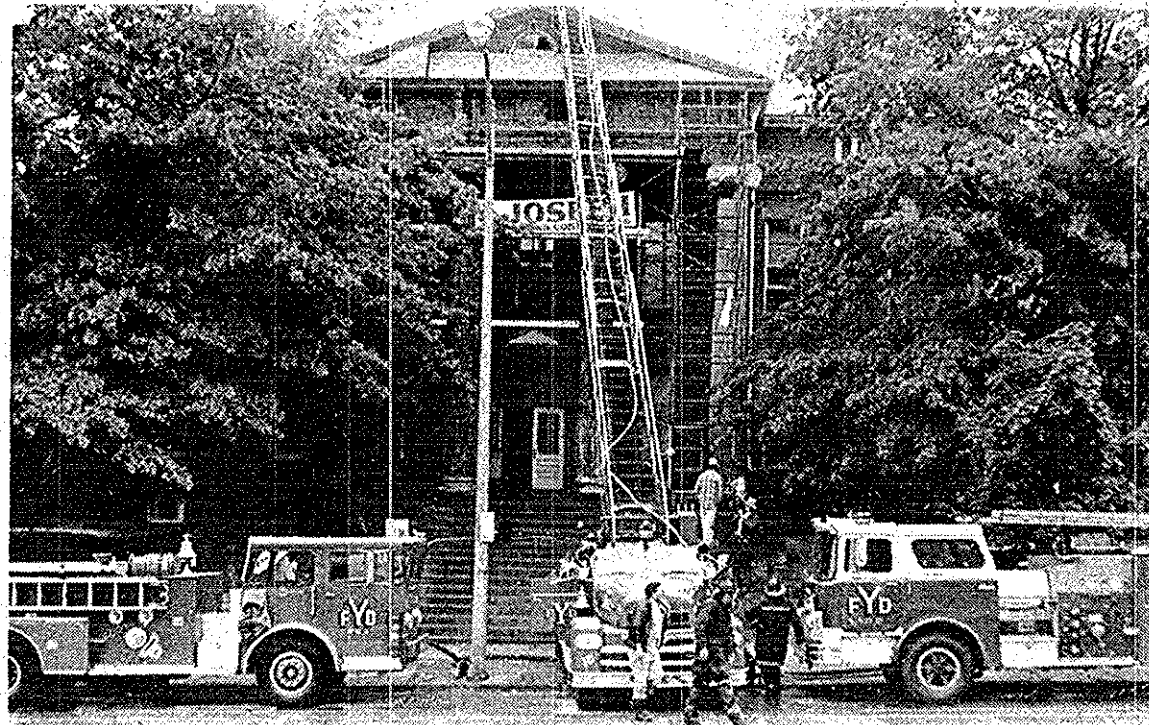
Bob Camp



Bob Camp



Bob Camp



Dan Pressley

The fire was touched off when a contractor's torch ignited a bird's nest at the top of the building (above) Left: a scorched attic beam.

## Parking woes

by Jeff Sheban

Trying to find a parking space on campus is similar to staking a claim for land during the California Gold Rush, especially this first week of classes. More often than not, YSU students are welcomed to campus by LOT FULL signs and enormous traffic jams.

According to Mr. Rick Eplawy, Manager of Auxiliary Services, the first couple days of any quarter are always hectic, but the confusion usually tapers off by the end of the week.

"Drivers should allow themselves one half hour to be on campus," said Mr. Eplawy, which still may not be enough time if students are unfamiliar with the campus.

In addition to the problems caused by the new drivers and large numbers of cars; another reason for the early morning congestion is that the new parking deck is not completed.

"By today the deck should accommodate approximately 800 cars," said Mr. Eplawy, "and will eventually hold 2100 cars in Feb. or March," he continued.

Mr. Eplawy suggests that students park in the Republic Steel lot, which can hold a virtually unlimited number of cars.

Students may park in any designated lot (other than faculty lots) during the first week of school, with or without a permit, but after this week violations will be given.

To speed the flow of traffic, one lot (M-2) has been converted to a cash lot, and is located across the street from Ursuline High School. After 3 p.m., the Lincoln Ave. Parking Garage will be used as the cash lot.

"The new parking deck and cash lot should keep traffic flowing pretty smoothly," Mr. Eplawy added.

For the next several weeks, Youngstown city police will be on campus in congested areas. And while YSU will not issue parking violations this week, Youngstown city police will. Therefore, students parked illegally on city streets run the risk of a \$5 parking fine.

Mr. Eplawy has mixed emotions about parking tickets, but feels that cars parked illegally obstruct people on campus, thus making a parking fine justifiable.

Eplawy concluded by saying that parking problems should begin to die down by next week.

## Fishman to give talk on terrorism

Professor William J. Fishman, of Queen Mary College, University of London (England) will lecture on the topic "Roots of Terrorism: The Russian Perspective" on Wednesday, Sept. 27 at 11 a.m. in the Ohio Room of Kilcawley Center.

Dr. Fishman is a social historian, author of *The Insurrectionists* and of *Jewish Radicals From Czarist Stettin to London Ghetto*. He is an expert on the life of the poor who inhabited East London and frequently conducts walking tours for visitors through this neighborhood. Professor Fishman has just completed a third book dealing with the history of this section of London and the immigrant experience that it embodies.

The lecture is being sponsored by the departments of History and of Sociology/Anthropology. The university community is invited to attend and to participate in the discussion which will follow Dr. Fishman's presentation.

Fishman last appeared on the YSU campus in Oct. 1971 when he discussed turn of the century anarchists.

## New students' fair

New students: it's time to find your place.

This week is New Students' Week. Sponsored by Student Activities, the week is designed to expose the new students to various activities and programs available to them in Kilcawley Center.

Highlighting the program is the Student Organization Fair, to be held Wednesday. The Fair showcases most of the student organizations with representatives on hand to answer questions relating to membership as well as supplying general information. The Fair will be located in the Kilcawley Center Arcade area, and will run Wednesday from 10 a.m. until 2 p.m.

Today features Al Markasky entertaining in the Pub at 11 a.m. The Art Gallery opens "A Toronto Sensibility," an exhibit featuring Canadian art, also today at 4 p.m.

Other high points include a Craft Center Open House Tuesday, the Locomotion Circus on Wednesday, and the opening of the KCPB film series on Thursday with "The Goodbye Girl." Admission is \$.75 with a YSU I.D.

The week closes with a Fall Quarter Kick-Off Dance Friday night at the Chestnut Room in the Center, and the football game with Saginaw Valley Saturday night. All events are free, with the exception of Thursday's film.

University teacher wants girl to take over her daughter's job of tending the animals. Board and room, horseback riding, plus gas money. Beautiful estate 25 minutes from campus. Experience not necessary but must love animals and supply references. Call (412) 658-1638 between 9-4.

## We are looking for local talent

Youngstown State University's Kilcawley Center Program Board will be holding auditions for persons interested in playing at our Happy Hours and Coffee houses. Auditions will be held on Sept. 30, 1978 from 10 a.m. until 4 p.m. in our Pub, which has a seating capacity of 90 and a 9x12 stage. Please call 742-3575 to make an appointment and for further details.

## OPEN HOUSE



KILCAWLEY CRAFTS CENTER

WELCOMES YOU...

TO STOP BY THE WEEK OF SEPT. 25th TO SEE A

DISPLAY OF CRAFTS WHICH CAN BE MADE in the CRAFTS CENTER

The Crafts Center's hours are:

Monday - Thursday 10 a.m. - 8 p.m.  
and Friday 10 a.m. - 6 p.m.

## WANT TO GET INVOLVED IN A MAJOR CAMPUS ACTIVITY?

## THE MAJOR EVENTS COMMITTEE

is now accepting applications for concert workforce positions

The committee is interested in dedicated, enthusiastic people who are willing to work and to accept responsibility

Applications are available at the student activities office, second floor, Kilcawley Center. Application Deadline: Wednesday, Sept. 27 at 4 pm

### Departmental Office Relocations for Jones Hall and Tod Administration Buildings

Department	From	To
Bursar	Central Services	Jones Hall
Cashier & Student Area	1st Floor	Jones 109
Business Offices		Jones 204
Student Registration	Ward Beecher Bsmt.	Jones 101
Registrar & Records	Disciple House	Jones 129
Admissions	Dana Main, 1st floor	Jones 213
Financial Aids	University Bkst. Bsmt.	Jones 226
Dean of Admissions	Disciple House	Jones 223
Graduate School	Bus. Adm. Bldg. 409	Jones 303
Counseling & Testing Center	Counseling Center	Jones 334
Career Planning & Placement	Univ. Bookstore Bsmt.	Jones 325
<b>Tod Administration Building</b>		
Computer Center	Engr. Science, 2nd floor	Tod B101
Telephone Switchboard	Jones Hall, 1st floor	Tod Adm. 113
Affirmative Action Office	Eng. Science, 213	Tod Adm. 114
University Relations	Univ. Bookstore Bsmt.	Tod Adm. 119
Campus Development	North Annex, 2nd floor	Tod Adm. 123
Purchasing Department	Dana Main, 2nd. floor	Tod Adm. 127
Trustees Meeting Room		Tod Adm. 105
President's Office		Tod Adm. 215
V.P. Academic Affairs		*Tod Adm. 212
V.P. Personnel		*Tod Adm. 212
Dean Administrative Affairs		*Tod Adm. 212
Assoc. V.P. Public Relations		*Tod Adm. 212
V. P. Finance		*Tod Adm. 212
Budget Office		Tod Adm. 209
Dean of Student Affairs	Kilcawley Hall 117	Tod Adm. 203
Faculty Personnel		Tod Adm. 223
Audits & Systems	Bus. Adm. Bldg, 206	Tod Adm. 309
Controllor	Engr. Sci. Bldg. 314	Tod Adm. 304
Accounting	Engr. Sci. Bldg. 322	Tod Adm. 312
Accounts Payable	Engr. Sci. Bldg. 315	Tod Adm. 304
Grants & Contracts	Engr. Sci. Bldg. 412	Tod Adm. 312
Payroll Department	Dana Recital Hall	Tod Adm. 301
Personnel (Classified)	Dana Recital Hall	Tod Adm. 314

\*Tod Administration Building, 2nd floor-Room 212-General Office Area  
\*Please Note: The International Student Program Office is still located at 629 Bryson Street, second floor.

**YSU MAJOR EVENTS PRESENTS**

# **DAVE MASON**

IN CONCERT  
**YSU BEEGLY CENTER**

**TICKETS**  
\$6.50 YSU STUDENTS, ADVANCE  
ONLY AVAILABLE ONLY UNTIL 5PM  
FRIDAY, SEPT. 29 AT KILCAWLEY  
CENTER CANDY COUNTER.

\$7.50 GENERAL PUBLIC / DAY OF  
SHOW AT ALL NATIONAL RECORD  
MARTS, OASIS RECORDS, AND  
TICKETRON OUTLETS.



**SUNDAY, OCTOBER 1**  
**8:00 PM**

Boast many sports

# YSU athletes equal success

The word "athletics" at YSU could easily be equated with the word success. A streak of successes have encompassed the entire athletic program from last year and, more importantly, the trend seems to be continuing this year.

When one talks of sports in group discussions or person to person, the topics which always seem to come up revolve around only the most common sports such as football, baseball and basketball. Seldom discussed are the many other types of sport which exist, especially on this campus. Each has written their own story of growth and success.

YSU has a total of 16 types of athletics which are part of intercollegiate varsity competition. In addition to the three major sports previously mentioned, there is wrestling, soccer, riflery, swimming, women's field hockey, women's basketball, women's softball, golf, women's volleyball and tennis. If you think you need an athletic scholarship or previous varsity

competition to try out for the teams, forget it. The coaches will be the first to tell you that this is not an essential ingredient for success.

I have mentioned that word success quite a few times, but have failed to illustrate that idea for you. Let me give you a few examples of what I mean by success. YSU football currently ranked fourth in the nation in Division II and was picked to be the first winner of the new Mid-Continent Conference's first championship. Men's Basketball boasts a Division II player of the year in Jeff Covington. Men's baseball has finished with over twenty victories a season for nine out of the last ten years. Women's softball is this year's defending state champions. Men's swimming boasts a Division II champion in Tom Bosse. Men's wrestling has sent five wrestlers to national competition; and there are many more too numerous to name.

A further illustration of success is YSU athletic facilities.

A stadium complex is now under construction, a modern complex which will add to an already modern physical education center, Beeghly Center, providing YSU athletes with the most modern facilities possible. Although the teams at YSU have become first-class, it is sad to say that their facilities have not kept up with the athletic teams. This is now in the process of being changed with the addition of the stadium complex.

But the teams cannot do it alone. The players will be the first to admit that the support of their student body is essential for a successful season. Make it a point to attend the games and matches of the individual teams and show your support. These men and women are giving their time to help promote the name of YSU and to make it a successful name. Your support will help them to reach this goal. Look for the times, dates, and places, as well as the results, in *The Jambar* each week.

# Guz explains fine points of college to little sister and all freshmen

by Guz Scullin

Hello, so much for the emotional hook.

'Tis the start of yet another school year, and that spells excitement. Those of us who are seasoned vets (and I don't mean animal doctors who roll around in barbecue sauce), we know the ropes of college life. We've been around, and we know where the happening people are, and we know where the happening places are. But, there are many newcomers to this carnivorous campus, yes. I am speaking of the poor (some of them middle class) freshmen and freshmen. A lot of the upperclassmen and upperclasswomen look at these people in knickers scurrying to and fro, searching for Room 112 on the sixth floor of Lincoln, and the upperclass folk let out hearty bursts of laughing air. Shame on you bullies! We all started as freshmen, I can still remember my first year at YSU. I went to Strouss' looking for my Biology class. I didn't find it, but I did find some raccoonskin coats, and I bought one because I thought everyone in college wore them. When I finally did find my class, I strutted in wearing my "spiffy" coat. People laughed at me. When I talked to a classmate and said "neato," or "this is the cat's pajamas," they gave me strange looks. How was I to know that Ronald Reagan wasn't attending classes at YSU with a chimp named Bonzo?

My kid sis, a red-haired lass named Mari, started her first year of college. I feel like I've known her all my life, and I was concerned when she walked around starry-eyed the day before school started.

"Sis," I said, "what's wrong?" "Tomorrow is the first day of college life for me, and I'm scared. What is it like? Where are the classes? How much is lunch, how many detentions do they give you before they call your parents?"

"Sit down kid, and I'll tell you about college life," said I. She slowly began to sit down, twenty minutes later, she was seated.

"It's not that bad," I began. "Is it like high school?" she asked as she tied her shoelace.

"Oh no, nothing like high school," I said as I picked up the paper I had just finished for one of my English classes. The paper was entitled "What I Did Over The Warm Summer."

"Then what's it like?" she said as she produced a 44 magnum and handed me a piece of paper that listed her demands. I concluded that she meant business.

"The main thing," I said, "is that you must abbreviate. Now listen, you don't take a Biology class, you take a "Bio" class. It's not a psychology class, it's a "Psych" class. Social Science is 'Sosch.' Physical Education is 'Phys. Ed.' Understand?"

"Then Accounting is 'Accounting'?"

"Right."

"I think I got it now, when are the pep rallies, Friday?"

"Uh, there aren't any pep rallies," I said. I wanted to avoid the subject of sports at YSU, since most people find it easy to avoid. "Remember that your best friend is the coffee machine," I said. "Once you find out where they are, you got college licked."

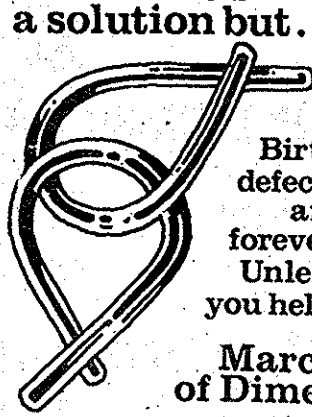
"All right," my sis said, "one last question. You said to abbreviate, well I'm taking this English class titled 'Creative Reading and Presentation' - what is the abbreviation for that?"

"That's easy," said I confidently, "just take the first letter of each word, and put them together."

"Crap!" she exclaimed.

"Right," I said. I think my sis is going to make it at YSU.

**There's a solution but...**



Birth defects are forever. Unless you help.

**March of Dimes**

**Enjoy fun, food, and fellowship?**  
Then come to Inter-Varsity's Christian Fellowship's Open House  
**Friday Sept. 29 12:00-1:00**  
at Kilcawley rm. 239  
**Come and get involved!**

"The Goodbye Girl" is a joyous comedy — just what the doctor ordered. Neil Simon makes feeling good legal..."

**the GOODBYE GIRL**

RICHARD DREYFUSS · MARSHA MASON  
and introducing QUINN CUMMINGS as Lucy

**Thursday, Sept. 28**  
12 noon, 4 and 8 pm in Chestnut Room  
75¢—YSU I.D. \$1.00—gen. admission

Sponsored by Film Committee of Kilcawley Center Program Board

**Hardee's Says**

**Rally around the Penguins**

with your team scarf  
for only 25¢

Purchase one when you buy  
a new Big Roast Beef at Hardee's.

**ART gallery**

Sept. 25—Oct. 13

**"A Toronto Sensibility"**  
Recent Paintings  
by Canadian Artists

Sponsored by Art Gallery Committee of Kilcawley Center Program Board

## Library questions answered; Maag offers more than books

by Stacey Savka

**TRUE** or **FALSE**. The only service that Maag Library offers to students is the lending of books.

**FALSE**. And if you are one of those that didn't know that Maag Library is more than a lending institution - read on! The other services that it offers to students and faculty members will surprise and perhaps be of some help to you.

**TRUE**. Maag Library is a book lender. In fact, it has 400,695 books and periodicals to lend, said Carol Wall, assistant librarian.

But Maag also offers other valuable services such as group study rooms. There are 15 group study rooms throughout the library that can be used by three or more persons at anytime. The rooms are partitioned off from the other areas of the library and allow group members to freely discuss their studies.

Students can also request individual study rooms located throughout the library, according to Wall, a \$10 deposit is required.

"When the key (to the study room) is returned, the deposit is also returned," added Wall.

A special facility available on the third floor of Maag is a Braille and Tape Resource Center for the visually handicapped. A Visualek magnifies print of any type, even a person's own writings, stated Wall.

The Braille and Tape Resource Center also contains a 72 volume braille dictionary and other reference books, continued Wall.

Because of the value of the equipment, the Braille and Tape Resource Center is locked. However, the key is available at the circulation desk.

Another facility of the library is the Microform Collection located on the first floor of Maag. This collection includes microfiche, microfilm, microfiche and micro-opaque.

This facility is truly a "space saver," said Wall. "We wouldn't be able to have the large amount of microform materials. And we would never be able to afford to buy them in any other form," explained Wall.

Wall added that microforms are a way to preserve old works that would otherwise never hold up through handling and aging, such as newspapers.

Maag Library also offers special services including the Northeast Ohio Network of Major Academic Libraries (NEOMAL) and the Ohio College Library Center (OCLC).

The NEOMAL is a borrowing system that allows students and faculty members to borrow any book at any library of the system. The system includes Kent State, Akron University, Cleveland State, Case Western Reserve and Wooster College Libraries. Any member of the university community may borrow from any of these libraries with a valid ID.

OCLC is a computer system located near the card catalogs on the second floor.

"Eighty percent of the collection of books of the library is in the data base of the computer," said Wall.

By consulting the OCLC manual which is located at the side of the computer, persons can locate any edition of a particular book. If Maag does not have the book in its collection, the computer will show

which libraries of the NEOMAL do have the wanted edition, explained Wall.

"You probably will still do alot better by checking the card catalog," continued Wall.

Maag also has a Rare Book Room which is located on the fifth floor.

"We don't have a special collection of books. We don't go out of our way to actively buy books for the Rare Book Room. We'd rather have books that students want for their regular classes," said Wall.

On the first floor of Maag, another collection, that of the Annual Reports of Major Corporations is accessible to the university community.

"Business students benefit here," commented Wall.

Still another collection, the Government Document Collection, is located on the third floor of Maag.

"All the government publications are on file. The government just automatically sends the official documents in all the different areas," said Wall.

According to Wall, the Government Document Collection contains 64,537 U.S. and Ohio documents.

Other services offered by Maag are the accessibility of typewriters and copiers to members of the university community.

Typewriters are located throughout the library and copiers can be found on the first floor.

**TRUE** or **FALSE**. You can benefit from the extensive services offered by Maag.

**TRUE**. So take advantage of the services that the library offers. As you can see it does more than merely lend books.

### CAMPUS CALENDAR

#### Tuesday, Sept. 26

KCPB "Francis the Talking Mule" Pub Film Series, 11 a.m. and 1 p.m., Pub  
KCPB Video Awareness Week 11 a.m.-3 p.m., Kilcawley Center Arcade  
KCPB Oblio's Coffehouse Mike Troiano, 8 p.m.-11 p.m., Pub

Orientation Leaders Information Table 9 a.m.-1 p.m., Kilcawley Center Arcade.

Panhellenic Council Rush Sign-up 10 a.m.-3 p.m., Kilcawley Center Arcade.  
Major Events Dave Mason Concert Ticket Sales, \$6.50 with YSU I.D., 8 a.m.-10 p.m., Candy Desk.

Craft Center Open House 10 a.m.-8 p.m., Craft Center, Kilcawley

ROTC Clinic 9 a.m.-4 p.m., Rifle Range, Beeghly

ROTC Rappelling 9 a.m.-4 p.m., Parking Deck, Lincoln Ave.

Guidance and Counseling Help Hotline Interviews 9 a.m.-1 p.m., Room 150, Kilcawley

Dollar Bank New Student Accounts 8 a.m.-6 p.m., Kilcawley Center Arcade.

#### Wednesday, Sept. 27

Student Activities Student Organizations Fair 10 a.m.-2 p.m., Kilcawley Center Arcade

KCPB Locomotion Circus Noon, Outside. In case of rain - Chestnut Room Kilcawley

KCPB Video Awareness Week 11 a.m.-3 p.m., Kilcawley Center Arcade

Panhellenic Council Rush Sign-Up 10 a.m.-3 p.m., Kilcawley Center Arcade

Major Events Dave Mason Concert Ticket Sales, \$6.50 with YSU I.D., 8 a.m.-10 p.m., Candy Desk, Kilcawley

ROTC Clinic 9 a.m.-4 p.m., Rifle Range, Beeghly

ROTC Rappelling 9 a.m.-4 p.m., Parking Deck, Lincoln Ave.

Guidance and Counseling Help Hotline Interviews 9 a.m.-1 p.m., Room 150, Kilcawley

Dollar Bank New Student Accounts 8 a.m.-6 p.m., Kilcawley Center Arcade

#### Thursday, Sept. 28

KCPB Video Awareness Week 11 a.m.-3 p.m., Kilcawley Center Arcade

KCPB "The Goodbye Girl" Film Series, \$0.75 with I.D., Noon, 4 p.m. and 8 p.m., Chestnut Room, Kilcawley

Panhellenic Council Rush Sign-Up 10 a.m.-3 p.m., Kilcawley Center Arcade

Major Events Dave Mason Concert Ticket Sales, \$6.50 with YSU I.D., 8 a.m.-10 p.m., Candy Desk, Kilcawley

Crafts Center Open House 10 a.m.-8 p.m., Craft Center, Kilcawley

ROTC Clinic 9 a.m.-4 p.m., Rifle Range, Beeghly

ROTC Rappelling 9 a.m.-4 p.m., Parking Deck, Lincoln Ave.

Spotlight Theatre Films "The Great Primitives" "The Saga of William S. Hart" "Trip To The Moon" "Porter/Edison Program No. 11" 7 p.m.-10 p.m., Ford Theater, Bliss

History Club Luncheon-Discussion Noon-1 p.m., Room 238, Kilcawley

History and Sociology Dept. Dr. William Fishman 11 a.m.-12:30 p.m., Room 236, Kilcawley

Dollar Bank New Student Accounts 8 a.m.-6 p.m., Kilcawley Center Arcade

#### Friday, Sept. 29

KCPB Video Awareness Week, 11 a.m.-3 p.m., Kilcawley Center Arcade

KCPB Happy Hours Guy Perneti, 1 p.m.-4 p.m., Pub, Kilcawley

IFC/Panhel Fall Quarter Kick-Off Dance "Great Lakes Band" 9 p.m.-1 a.m., Chestnut Room, Kilcawley

Panhellenic Council Rush Sign-Up 10 a.m.-3 p.m., Kilcawley Center Arcade

Black United Students Orientation 10 a.m.-Noon, Room 236, Kilcawley

Black United Students Dance Admission Charge, 9 p.m.-1 a.m., Room 236, Kilcawley

Major Events Dave Mason Concert Ticket Sales, \$6.50 with YSU I.D., Last day for student prices, 8 a.m.-10 p.m., Candy Desk

ROTC Clinic 9 a.m.-4 p.m., Rifle Range, Beeghly

ROTC Rappelling 9 a.m.-4 p.m., Parking Deck, Lincoln Ave.

Dollar Bank New Student Accounts 8 a.m.-6 p.m., Kilcawley Center Arcade

Intramural Dept. Football Coed, Entries due Sept. 29, Noon. Play begins Oct. 7. Captains meeting Oct. 4, 7 p.m., Room 236, Kilcawley. Officials meeting Oct. 4, 8 p.m., Room 236, Kilcawley

Intramural Dept. Tennis Doubles Entries due Sept. 29, Noon. Play begins the following week.

## Council represents YSU student body

YSU's student body is represented by the Student Government, which operates under constitutional powers granted by the University. The legislative branch of Student Government, Student Council, is composed of representatives from six undergraduate units, the College of Arts and Sciences, the School of Business Administration, the School of Education, the School of Engineering, the College of Fine and Performing Arts, and the College of Applied Science and Technology. The number of representatives is proportional to the enrollment in each school.

Elections to these seats takes place twice a year, in the fall and in the spring. Election of

Cont. on pg. 11



INTERESTED IN PHOTOGRAPHY?

THE

**NEON**

IS LOOKING FOR PHOTOGRAPHERS

TO WORK ON THE 1978-79 YEARBOOK

ORGANIZATIONAL MEETING WILL BE HELD

Monday Oct. 2 7:30 pm 102 Rayen Hall



### CCM provides services through on-going program

"The Cooperative Campus Ministry (CCM), exists to nurture religious ideals and actions at YSU through worship, study, fellowship, and service," explained Reverend Diane Kenney, protestant advisor to CCM.

CCM and the Newman Center, the Roman Catholic religious representative on campus, offer various programs and services to students and faculty throughout the year.

CCM is the local branch of the United Ministries in Higher Education (UMHE). The UMHE represents seven major denominations on state university campuses.

These denominations are: the Christian Church, the United Methodist Church, the United Church of Christ, the United Presbyterian Church, the American Baptist Church, the Church of the Brethren, and the Episcopal Church.

As part of their on-going program, CCM operates the Free Clinic, and sponsors the Boar's Head Luncheon, and A Place.

The Free Clinic is open on Wednesdays from 7 p.m. until 10 p.m. and is located in the basement of the First Christian Church (corner of Wick Avenue and Spring Street). The Clinic provides "physicals, consultations, lab work, referrals, and conversation," explained Kenney.

The Boar's Head Luncheon takes place every Wednesday during the academic quarter from 11:30 a.m. to 1 p.m. on the third floor of St. John Episcopal Church (Wick Avenue at Lincoln). For two dollars, one receives a "well prepared and presented meal" with accompanying entertainment, said Kenney.

A Place provides "a space to meet others, a place studying can be done, some share-able resources, and special programs," for "non-traditional" students said Kenney. She described these students as "those who are older or may be returning (to school) after an extended time out."

A Place and the CCM office are both located in the First Christian Church. A Place is

open for study on Monday, Tuesday, and Thursday from 9 a.m. until noon. On Wednesdays from 6:30 p.m. to 8:30 p.m. and on Thursdays from 4:30 p.m. until 7:30 p.m. it is open for socializing.

The Newman Center is located at 26 West Rayen Avenue and is under the direction of

Reverend Joseph Witmer and Deacon Joseph Rudjak.

Throughout the year, Newman offers Bible studies, sponsors the Newman Student Organization and provides religious programs for the YSU community.

On Sunday, Oct. 1, at 10 a.m., Newman will have a special "Welcome in, Welcome Back" liturgy and brunch at the Newman Church (corner of Wick and Rayen Avenues). This is for those who are "new to campus, or just spreading their wings," explained Father Witmer.

Newman will also co-sponsor a series of free programs this fall entitled "Our Changing Spiritualities." The series consists of six sessions of lectures and discussions.

Scheduled guest speakers include Dr. Sidney Ahlstrom, professor of American studies at Yale University; Dr. Eugene Borowitz, professor of education and Jewish religious thought, Hebrew Union College-Jewish Institute of Religion, New York City; the Rev. Lev Puhalo, editor of *Synaxis*, SS. Cyril and Methodius Society; and Dr. Matthew Fox, professor of spiritual theology and director of the Institute of Creation-Centered Spirituality, Mundelein College, Chicago.

Other speakers will be Dr. Mark Talbot, director of Yokefellow Academy and Dr. Morton Kelsey, professor in graduate studies in education, Notre Dame University.

The programs will study the American culture, the Judaic, Orthodox, Roman Catholic and Protestant traditions.

For more information on program dates and locations contact the Newman Center at 747-9202.

# SOUND MUSICAL ADVICE

## Youngstown Symphony Orchestra

### Franz Bibo

MUSICAL DIRECTOR AND CONDUCTOR

**Y.S.U. Students Save 75%**

All available seats offered to students at 75% off regular season ticket price  
Six-concert series runs from Sept. 30 - April 28  
Validated I.D. secures a \$33.00 season ticket for only \$8.25; a \$24.00 season ticket for just \$6.00!

**ACT NOW**

To make your reservation for a season ticket to the Youngstown Symphony, see the office of the Dean of Student Affairs, Tod Administration, Room 203.  
Please, a limit of two tickets per validated I.D.  
FUNDED BY STUDENT GOVERNMENT

JAMBAR  
RAYEN HALL, ROOM 117  
YSU CAMPUS  
PHONE 742-3004, 4095, 3094

Editor-in-Chief: Greg Garramone  
Managing Editor: Elody Fee  
News Editor: Lyndie Votaw  
Copy Editor: Nate Leslie  
Sports Editor: Bill Snier  
Entertainment Editor: Liz Lane  
Special Edition Editor: Barbara Janesh  
Photo Editor: Bob Camp  
Staff: Leslie Pearce, Randy Abraham, Mary Jane Klempay, Diane Cicchilo, Bob McKimmy, Stacey Savka, Bill Rowan, John Creer, Ed Shanks  
Advertising: Rick Huhn, manager, Stan Massey, Rocco Pochiro  
Compositors: Carol Pechalk, Christy Phillips

Verityper: Russel Hack  
Advisor: Mrs. Martindale  
Secretary: Millie McDonough

The *Jambor* is published Tuesdays and Fridays during the regular school year by the students of Youngstown State University and under the authority of the Student Publication Committee. Editorial material and comments are the responsibility of the editors. Opinions expressed in the newspaper are not necessarily those of the staff, the student body, or the YSU administration. Advertising rates on request at the *Jambor* office. Subscription rates: \$8 for three quarters; \$9 for year.

# YSU'S

## Fraternities and Sororities

Present

### FALL KICKOFF DANCE

Featuring

### GREAT LAKES BAND

Friday, Sept. 29                      9 pm - 1 am

Kilcawley Center Chestnut Room

**Admission FREE**

Open to ALL YSU students

Sponsored in Conjunction with

### Student Government

## Wanna be a jock? Athletes needed for intramurals

by Ed Shanks

Are you an ardent fan, as well as a mediocre player of a certain sport or two? Do you dream of playing your favorite sport, but the varsity coach had

to be carried away laughing when you went out for the team?

There, there, you can find consolation at the Intramurals office, where either whole teams

or individuals can enroll for practically any sport under the sun.

Tim Miller, head of Intramurals, is anticipating another year of activities, and has introduced several new sports into the Intramural agenda. This agenda includes men's tennis doubles, men's arm wrestling, and coed softball.

Miller said that there will be a new rule in effect this year, whereby if an Intramural team is not represented at the captains' meeting held before the start of a sport season, the team will lose 25% of its participation points for that sport.

Stressing the importance of the captain's meetings, Miller said, "It is important for team captains to get together, because this is a time of rule changes, and teams not represented will have no way to find out about

(Cont. on page 11)

### Upcoming Intramurals

Men's Activities	
*Tennis Doubles	Sept. 29, 1978
Touch Football	Sept. 29, 1978
Punt, Pass, Kick	To be announced
Soccer	Oct. 6, 1978
Badminton Doubles	Oct. 20, 1978
Handball Singles	Oct. 20, 1978
Racketball Singles	Oct. 27, 1978
Turkey Trot	Nov. 21, 1978
Basketball	Dec. 8, 1978
Volleyball	Jan. 12, 1979
Racketball Doubles	Jan. 12, 1979
Bowling	Jan. 12, 1979
One on One	Jan. 26, 1979
Free Throw	Jan. 26, 1979
Squash	Jan. 26, 1979
*Arm Wrestling	To be announced (winter)
Wrestling	Feb. 2, 1979
Table Tennis Singles	Feb. 9, 1979
Swim Meet	March 9, 1979
Softball	March 16, 1979
Water Polo	March 30, 1979
Tennis Singles	April 6, 1979
Riflery	April 13, 1979
Pool	April 13, 1979
Badminton Singles	April 20, 1979
Table Tennis Doubles	April 27, 1979
Track	May 4, 1979
Golf	May 11, 1979
Faculty-Staff-Students Activities	
Run for Fun	Anytime
*Swim for Fun	Anytime
Exercise and Conditioning	To be announced
Camping	To be announced
Backpacking	To be announced
Women's Activities	
Tennis Doubles	Sept. 29, 1978
Flag Football	Sept. 29, 1978
Punt, Pass, Kick	To be announced
Badminton Doubles	Oct. 20, 1978
Racketball Singles	Oct. 27, 1978
Turkey Trot	Nov. 21, 1978
Basketball	Dec. 8, 1978
Volleyball	Jan. 12, 1979
Racketball Doubles	Jan. 12, 1979
Bowling	Jan. 12, 1979
Free Throw	Jan. 26, 1979
Table Tennis Singles	Feb. 9, 1979
Swim Meet	March 9, 1979
Softball	March 16, 1979
Water Polo	March 30, 1979
Tennis Singles	April 6, 1979
Riflery	April 13, 1979
Pool	April 13, 1979
Badminton Singles	April 20, 1979
Table Tennis Doubles	April 27, 1979
Track	May 4, 1979
Golf	May 11, 1979
Co-ed Activities	
Tennis Doubles	Sept. 29, 1978
Water Polo	Oct. 13, 1978
Table Tennis Doubles	Nov. 3, 1978
Badminton Doubles	Jan. 19, 1979
*Softball	March 16, 1979
Bowling	April 6, 1979
Volleyball	April 6, 1979
Racketball Doubles	April 13, 1979
*new activity	

### Classifieds

Come to Inter-Varsity Christian Fellowship's Open House Friday 12:00-1:00 in Kilcawley Room 239 (2529CH)

Kensington Ave. 3 bedroom apts. \$135 month includes electricity. Benita Ave. Duplex 2 bedroom apt. \$100 month pay own utilities. Call after 7:00 p.m. 542-2542 (50CH)

DIPLOMA TOILET PAPER! Great fund-raiser for fraternities, sororities, clubs; profit-maker for bookstores or enterprising individuals. Only one exclusive per campus so write today! Enthusiastic Enterprises, 612 South Fourth, Mankato, MN 56001 (1526CH)

DIAMOND ENGAGEMENT & WEDDING RINGS: Up to 50% discount to students, faculty and staff. Example, 1/2 ct. \$150, 1/2 ct. \$350, 1 ct. \$995, by buying direct from leading diamond cutter. For color catalog send \$1 to SMA Diamond Importers, Inc., Box 42, Fanwood, N.J. 07023 (indicate name of school) or call (212) 682-3390 for location of showroom nearest you. (100CH)

IMPROVE YOUR GRADES! Send \$1.00 for your 256-page, mail order catalog of Collegiate Research, 10,250 topics listed. Prompt delivery. Box 25907-B, Los Angeles, Calif. 90025. (213) 477-8226 (100CH)

### Classifieds

CONTACT LENS WEARERS. Save on brand name hard or soft lens supplies. Send for free illustrated catalog. Contact Lens Supplies, Box 7453, Phoenix, Arizona 85011 (1526CH)

Early Birds! Coffee or tea is only 10 cents (20 cents large) when you buy 2 freshly made donuts at The Creamery in Kilcawley Center from 7:30 a.m.-10:30 a.m. (1526)

Try THE CREAMERY! We make our own delicious ice cream and feature 8 flavors daily plus 2 flavors of frozen yogurt. We're located in Kilcawley Center and are open 7:30 a.m.-9:00 p.m. (1526)

Yes! THE CREAMERY is making donuts every morning. We open at 7:30 a.m. and are located on the first floor of Kilcawley Center. (1526)

Apartments for rent - 1 block from university solar. Realty 747-9211 220 W. Rayen (11NC)

For Sale: Motorized bicycle \$350 call 652-0113 (1526C)

Rooms for rent. Room mates needed to occupy 2 rooms of spacious 3 bedroom apartment on Northside. 1 room furnished, 1 not furnished. Call 747-9839 (2529C)

## THE CREAMERY

Kilcawley Center

### Welcome Back Special

This week only with any purchase receive a coupon good for a free 12 oz. Coca Cola redeemable on your next visit!

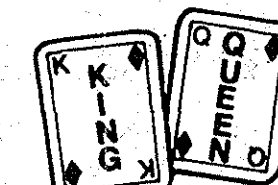


Limit 1 per customer.

## HOMECOMING '78

# STILL CRAZY AFTER ALL THESE YEARS

OCT. 18 - 21



COMPETITION

## NOMINATE A KING OR QUEEN CANDIDATE

The 1978 Homecoming committee is reintroducing a traditional competition to recognize the contributions of Junior and Senior YSU students as

# HOMECOMING KING AND QUEEN

Applications available at the student activities office on Monday, Oct. 2

Candidates must fill out the application completely, acquire 60 signatures on a petition and return both the application and petition to the Student Activities office no later than 3 p.m. Wednesday, Oct. 4. Open to all full time Junior and Senior YSU Students. Sponsored in conjunction with Student Government

## Kilcawley Center offers wide range of services

"In terms of the overall design of the campus, the Kilcawley Student Center is the center of the University. But this also holds true for the variety of experiences, services, and even types of employment the center has to offer the student at YSU."

These words, spoken by Phil Hirsch, Director of Kilcawley Student Center, indeed reflect the active role the center plays in University life, since it's opening in 1974. From candy to crafts, music to munchies, and beer to books, Kilcawley offers the students a wide range of services and activities, as well as simply providing a place for people to meet after class.

For an after or between class snack or treat, the Candy Desk, located on the first floor, offers a variety of candy, nuts,

cigarettes and gum. Newspapers are also available. The Desk is open from 8 a.m. to 10 p.m. Monday through Friday, and from 9 a.m. to 6 p.m. Saturday.

The Craft Center, located on the second floor by the bookstore offers crafts and craft workshops in quilting, weaving, stained glass, leathercraft, and silkscreening. The Craft Center Supervisor is Janet Sofranec, and its hours are 10 a.m. to 8 p.m. Monday through Thursday, and 10 a.m. to 6 p.m. on Friday.

If you need to hear that great or special tune or group, or even if you're just looking for a place to close your eyes and relax by yourself, the music room is the place to be. Located on the second floor, across from the north entrance of the Center, two adjacent music listening rooms have on hand, at the

desk, an amazing selection of rock albums and tapes, as well as some classical, jazz, and movie soundtrack music. A card file listing this collection is available at the desk.

Upon presentation of a validated student ID, headphones may be obtained, and plugged into the jacks in the music rooms and the Reading Lounge. Also available is radio, a cassette deck, and two eight track decks. The rooms are open from 8 a.m. to 10 p.m. Monday through Friday.

A wide range of food is available in the Center. The Snack Bar and the Brief Eater, open at 7 a.m.; serve breakfast and offer a full food service throughout the day. Hardees, primarily a fast-food outlet, also has breakfast, as well as a full variety of hamburgers, sandwiches, and beverages. The Wicker Basket, located on the second floor, is a classy place, with table service menu items and a relaxed atmosphere. The Creamery, on the first floor across from Hardee's, offers all types of ice cream and yogurt. Finally, next to the Wicker Basket are

the dining facilities for students living in Kilcawley Men's Residence Hall.

As for alcohol and entertainment there's beer, although 3.2, available at the Pub. Located on the first floor, the Pub features dimmed lighting, terraced seating, a six-foot TV screen, and a minstrel for live entertainment. Hours are as follows: Monday-Thursday, 10 a.m.-11 p.m.; Friday, 11 a.m.-1 a.m.; and Saturday, noon to 1 a.m.

The bookstore is on the second floor, and offers school books, leisure books, shirts, jackets, magazines, cards, art supplies and various items too numerous to mention. Check it out yourself Monday and Tuesday from 8 a.m. to 8 p.m., Wednesday to Friday 8 a.m. to 5 p.m., Saturday 9 a.m. to noon.

The Art Gallery, across from the music room, has art shows on exhibit throughout the year. The Recreation Room, on the first floor has available for student use billiards, ping-pong, foosball, for a slight fee, the shuffleboard table is free, how-

ever. The TV room is across from the Rec Room; a ride board, where students can find and post information on rides both needed and available, is located on the first floor; the duplicating center, next to the candy desk, provides a variety of copying and poster printing services; and right next door to that is a branch of the Dollar Bank offering full banking services.

But if you're just looking for a place to sit, the informal lounge, where you can talk, is on the first floor, and the reading lounge, where you shouldn't talk, is next to the Music Room on the second.

Kilcawley also houses Student Government, student organizations, and a number of meeting rooms for clubs and organizations to meet.

Tobin explained that, as a member of the video arts committee, one can get involved as much as he desires. A student with as little as 10-15 minutes free can be a great help to the committee, according to Tobin.

### Student Government

(Cont. from page 8)

Government offices and the student's name will appear on the ballot. Notification of upcoming elections will appear in *The Jambar*.

All meetings of the Student Council are open to the student body, and any matter may be brought before a meeting by requesting beforehand that it be included in the agenda for the meeting.

Student Government exercises the power to conduct student elections, to hear appeals from groups or individuals, to recommend students to serve as members of joint faculty-student committees, and to supervise programs financed from its operating budget.

This year's President to Student Government is Tony Koury and the Vice President is Dave Bozanich.

Chairman and Vice Chairman always takes place in the spring. The present Chairman to the Student Council is John Carano and Vice Chairman is Mario Massaro.

Student Council's primary function is controlling the student budget which is distributed to all student organizations and most student activities.

For a student to be elected to Student Council he must solicit 50 signatures on a petition from the Student Government offices. The petition is then turned into the Student

### Assistance offered to students having financial problems

Now that the fall quarter is getting underway, many students find they are suffering from a classic college syndrome, the lack of money.

If you're just about broke after paying for fall's tuition, or if you've suddenly discovered that last summer's savings won't be able to carry you through the coming year, perhaps you'd better make your way to the Financial Aids office, located on the second floor of Jones Hall.

This office advises students on the availability of federal, state, and university aid, and furnishes the applications necessary for a student to apply to receive these funds.

In addition, the financial aids office also handles on-campus student employment. There are currently 3508 students working part-time at the University. They are restricted to a 20-hour work week while school is in session, but may work up to 40 hours during breaks. To be eligible, students must be in good standing, and must have attended school for at least one quarter. Unless extreme financial need can be shown, students receiving federal aid are not eligible for on-campus employment.

All students interested in receiving financial assistance or in acquiring on-campus employment are urged to contact the financial aids office.

### Counseling center provides service in broad range of student concerns

For the past ten years, students suffering from personal, vocational, or educational problems have found solace at the University Counseling Center, now located on the third floor of Jones Hall.

The center, which offers its services completely free of charge is staffed by three counseling psychologists, one vocational counselor, and a grad assistant.

"Drugs, sex, pregnancy, family crises...we have virtually seen it all," says one staff member. "We help students on a totally confidential basis with any troubles they may be having."

In addition to personal problems, the Counseling Center can assist students with a broad range of other problems. Students having a hard time adjusting to college can receive training in effective study techniques. For the prospective graduate, the center can assist by offering techniques to aid him in job interviews.

"Many students don't come to see us because they don't think their problems are severe enough," says a staff member. "This is ridiculous! There is no such thing as a small problem when it is your own."

### Intramural

(Cont. from page 10)

any new rules." Miller also mentioned that the reasoning behind the penalty of losing participation points is that towards the end of last year only a few captains ever attended the meetings.

Upcoming events also include a Run-for-Fun, and a newly added Swim-for-Fun. Participants are urged to sign up at once for either or both of these events at the intramurals office. Those completing 500 miles in last year's Run-for-Fun will have their names put on a plaque that will be on display. Miller mentioned that there were several runners who made the 500 miles, and a large percentage of them were faculty!

### Media

(Cont. from page 1)

The fourth member of the print media on campus is the *Polyglot* YSU's foreign language newspaper. Any student interested in foreign languages and that would like to write something for the paper is asked to contact the foreign language department. The campus literary magazine which is published in the spring quarter. The publication consists of prose, artwork, and poetry which is contributed by the students and faculty of YSU. They would also appreciate staff members to assist in the operations of collecting and laying out the magazine. Their offices are also housed in Rayen.

These are the major forms of the media which exist on the YSU campus. Of course, becoming involved in publicity campaigns for individual organizations is also a way of coming in contact with the media. But a common goal exists in all form of the media on campus -- learning through a working experience, which can become enjoyable as well as profitable in the future.

## KILCAWLEY CENTER PROGRAM BOARD

The programming aim of Kilcawley Center is Kilcawley Center Program Board. KCPB plans a well-rounded diversified program ranging from films, rafting excursions, campus tournaments, video dances, concerts and special events.

**Membership on KCPB is open to all YSU students.**

**Applications are available in the Program Board Office on the second floor in the Staff Offices of Kilcawley Center.**

## CALENDAR OF EVENTS September 25-30

### TUESDAY

Orientation Leader's Information  
Arcade Area (9am - 1pm)  
Craft Center Open House (10am - 8pm)  
Video Program  
Arcade Area (11am - 1pm)  
Pub Film: "Francis the Talking Mule"  
(11am & 1pm)

#### ROTC

Free Clinic in the Rifle Range  
Beeghly, room 116 (9am - 4pm)  
Rappelling  
Parking Deck (9am - 4pm)  
Oblio's Coffee House featuring Mike  
Troiano  
Pub (8 - 11pm)

### WEDNESDAY

Student Organizations Fair  
Arcade Area (10am - 2pm)  
Video Program  
Arcade Area (11am - 1pm)  
Locomotion Circus  
near the amphitheater (noon)  
Craft Center Open House (10am - 8pm)  
ROTC  
Free Clinic in the Rifle Range  
Beeghly, room 116 (9am - 4pm)  
Rappelling  
Parking Deck (9am - 4pm)

### THURSDAY

KCPB Film Series: "The Goodbye Girl"  
Chestnut Room (12noon, 4 & 8pm)  
Video Program  
Arcade Area (11am - 1pm)  
Craft Center Open House (10am - 8pm)  
ROTC  
Free Clinic in the Rifle Range  
Beeghly, room 116 (9am - 4pm)  
Rappelling  
Parking Deck (9am - 4pm)

### FRIDAY

Pub Happy Hours featuring Guy  
Pernetti (1 - 4pm)  
ROTC  
Free Clinic in the Rifle Range  
Beeghly, room 116 (9am - 4pm)  
Rappelling  
Parking Deck (9am - 4pm)  
Fall Quarter Kick-Off Dance  
Chestnut Room (9pm - 1am)

### SATURDAY

YSU vs SAGINAW VALLEY  
Austintown Fitch Stadium (7:30pm)

#### note:

All events are FREE, with the exception of the Thursday Film Series (Admission 75¢ with YSU I.D.)

Remember to pick up a copy of the JAMBAR'S SPECIAL ORIENTATION ISSUE

Be sure to get a copy of the new weekly calendar of campus events, "WHAT'S HAPPENING AT YSU"

## Welcome back to YSU



## A Week of Special Activities to Welcome You Back

### WELCOME BACK SPECIALS

#### THE CREAMERY

With any purchase, receive a coupon good for a free 12 oz. Coca Cola redeemable on your next visit to THE CREAMERY

Limit 1 per customer

#### BRIEF-EATER

With each purchase of a "Special of the Day" receive a free Bic Banana Pen

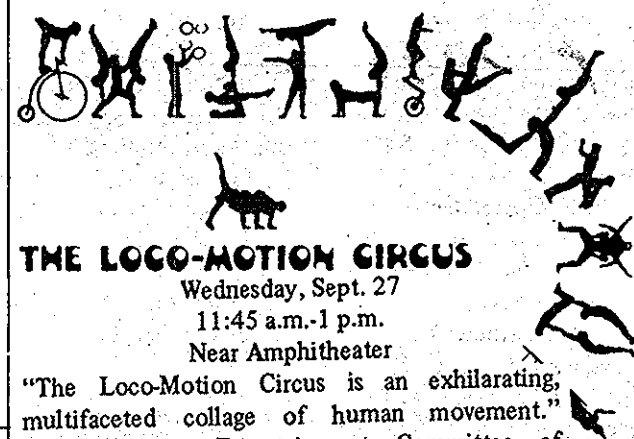
A trip to Cleveland vs. Pittsburgh Football Game  
Sunday, Oct. 15, 1978  
\$15.00/person

price includes: game ticket and round trip bus transportation

Bus leaves from Kilcawley Center Oct. 15 at 9 a.m. and will return at 7 p.m.

Sign up starts Oct. 2

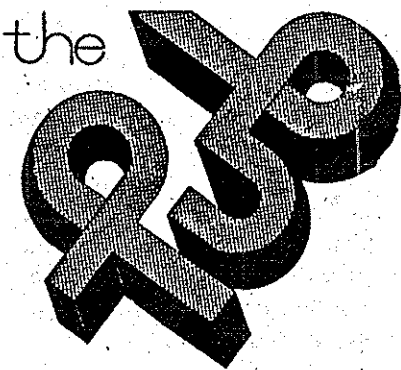
Sponsored by the Recreation Committee of Kilcawley Center Program Board



#### THE LOCO-MOTION CIRCUS

Wednesday, Sept. 27  
11:45 a.m.-1 p.m.  
Near Amphitheater

"The Loco-Motion Circus is an exhilarating, multifaceted collage of human movement." Sponsored by Entertainment Committee of Kilcawley Center Program Board



Monday, Sept. 25

11 a.m.-1 p.m. folk singer, Al Markasky  
9 p.m. Monday Night Football (Minnesota and Chicago) Shown on Big Screen T.V. Free popcorn with every purchase.

Tuesday, Sept. 26

8 p.m. Oblio's Coffee House with Mike Troiano

Friday, Sept. 29

1-4 p.m. Happy Hours with Guy Pernetti  
Sponsored by Pub Programming and Coffee House Committees of Kilcawley Center Program Board

Sept. 25-29

Video Awareness Week

-National Lampoon Show

-Magical Mystery Tour

-Future Shock

-Frisbee Championship

Shown daily in Kilcawley Center Program Lounge

Sponsored by Video Arts Committee of Kilcawley Center Program Board

#### "FRANCIS" the Talking Mule

Shown in the Pub

Tuesday, Sept. 26

11 a.m. and 1 p.m.

FREE

Sponsored by Film Committee of Kilcawley Center Program Board

## Sponsored by Kilcawley Center Program Board & the Student Activities Office