



SIMPLY AMAZING—John Fabjance's magic act was one of the highlights of Kilcawley Kick-Off week. (Photo by Neil Yukin)

the jambor

friday, september 28, 1979
vol. 61 — no. 2

Female employee sues University; claims discrimination in promotion

by LuWayne K. Tompkins

YSU employee Nan Polumbo will be represented by the Ohio Civil Rights Commission (OCRC) in a sex discrimination case pending against the University.

In a formal complaint filed with the OCRC, Polumbo alleges that YSU refused to promote her from the position of Groundskeeper I to Groundskeeper II, thereby denying her "equal terms and conditions of employment in regard to training and subsequently harassed her to the point of physical injury."

Polumbo contends she was denied the promotion on the basis of sex back in December 1977; and that four months later she injured her back while lifting an evergreen shrub, a job she supposedly would not have been doing had she been promoted.

The injury has resulted in Polumbo's re-assignment from the campus grounds department to the records department of YSU. Polumbo, who was the only permanent female employee with campus grounds, began as a student employee with the grounds department. In 1975 she was appointed a laborer, and in 1976 was promoted to Groundskeeper I.

In late fall of 1977, Polumbo claimed she was passed over for a promotion to Groundskeeper II when a male employee was recommended for the position. Because of Polumbo's suit, the job has not yet been filled.

The formal complaint stated that OCRC's preliminary investigations on Feb. 9 and March 13, 1979 have determined the probability of unlawful discriminatory practices by YSU. Since the parties have been unable to reconcile their differences, a hearing has been set for Thursday, Oct. 4, 1979, 9 a.m., in the Mahoning County Courthouse.

The University could be found to be in violation of Ohio's Revised Code Section 4112.02(A) which prohibits sexual discrimination "with respect to hire, tenure, terms, conditions or privileges of employment," or "any matter, directly or indirectly related to employment."

Polumbo's OCRC representative will seek to prove that she was a victim of sexual discrimination and should be reimbursed to back pay from the Groundskeeper II salary from Dec. 1977.

According to Theodore Cubison, YSU director of legal services, the University will attempt to prove she was not as qualified for the promotion as other grounds department personnel.

Since Polumbo's medical record (Cont. on page 3)

Weekend Study Program proves successful for many students

by Deborah Greenfield

Initial response to the recently instituted Weekend Study Program has been quite favorable, according to Dr. Irwin Cohen, program co-ordinator.

"Of the 52 classes offered, we expect at least 40 to actually run, with reasonable enrollment in all of them," said Cohen. These weekend classes are part of a program to make YSU "more accessible for those who cannot attend during the week. The working family cannot just drop everything and come to school," Cohen explained.

Many current students also have enrolled in the weekend classes in order to alleviate the pressures of juggling a job and university schedule.

Under the Weekend Study Program, classes meet once a week on Friday evenings, Saturday mornings or Saturday afternoons. Courses are structured so that it is possible to obtain an AAB in three years. So far, it is not possible to be granted a B.A. by attending weekend classes alone.

The various courses offered include those in the Schools of Arts and Sciences, Education, Business Administration and Fine and Performing Arts.

Three special courses are being offered to meet the demand of older first-time re-entry and Continuing Education students. These three classes include a basic English course, a psychology course, which is actually an introduction to higher education, and Education 510, a course in reading and study skills.

The Weekend Study Program is sometimes referred to as "Phase II" because it attracts such a large number of people returning to the classroom after an extended absence.

It represents a concentrated, co-ordinated effort of the various schools, departments and instructors to meet the demand of the growing interest in higher education. "We are studying the enrollment and trying to evaluate, what we are doing," stated Cohen.

A great deal of research went

into the institution of the Weekend Study Program. After a thorough study of weekend programs at other universities throughout the country, it was decided that the weekend program here would be a regular part of the University instead of a special, separate division. This way, no additional student costs are incurred and the regular instructional fees apply.

A telephone survey was conducted and a special Community Liaison Committee was formed in an effort to stimulate interest in such a program. This committee is also working on other ways to collaborate with the community and co-ordinate evening classes.

Dr. Cohen says he has received a great deal of co-operation from the faculty. Although there has been good student response for the Weekend Study Program, the results must still be analyzed.

Dr. Earl E. Edgar, vice president for academic services says he plans to give the program at least a two-year trial period.

Lecture Series features Nazi hunter Wiesenthal

Nazi war crimes investigator Simon Wiesenthal is one of five guest lecturers scheduled for YSU's fall '79 Special Lecture Series.

Wiesenthal, who is responsible for the arrest of over 1,100 Nazi officials, including Adolf Eichman (Hitler's "Jewish expert"), will appear at 8:30 p.m., Wednesday, Nov. 7 in the Chestnut Room, Kilcawley Center.

The lecture series begins with noted psychoanalyst Dr. Rollo May, May, a respected authority in humanistic psychology, has authored *Love and Will* and *Power and Innocence*. He is scheduled to speak at 8:30 p.m., Wednesday, Oct. 10, in the Chest-

nut Room.

On Monday, Oct. 22, political activist Tom Hayden and actress Jane Fonda will discuss their Campaign for Economic Democracy. They will also speak at 8:30 p.m. in the Chestnut Room.

The series will close with Joseph Califano, former secretary of HEW in the Carter cabinet, on Nov. 14. Califano, also part of the Kennedy and Johnson administrations is a noted lecturer on the exercise of Presidential power and the role of the federal government.

Califano's lecture begins at 8:30 p.m., but unlike the other speakers, he will appear in Powers (Cont. on page 8)

Get-Acquainted Reception

Thursday, Oct. 4
3 p.m., Scarlet Room, Kilcawley
Meet chairpeople from Kilcawley Center
Program Board and learn how you can become
involved in this exciting organization!
Refreshments served.



Hewlett Packard Calculators at the Bookstore

Choose from:

- HP - 31E Scientific
- HP - 33E Programmable Scientific
- HP - 32E Advanced Scientific with Statistics
- HP - 37E Business Management
- HP - 38E Advanced Financial with Programmability

YSU Bookstore
Kilcawley Center

*****Classifieds*****

homecoming

The 1979 Homecoming Committee wishes to welcome incoming freshmen to YSU. Let the good times roll—high school was never like this. (1S28)

YSU students, now's your chance to get involved in a group activity during the Homecoming week of events. Get together a team before the deadline. (1S28)

While most YSU students were vacationing, YSU's Homecoming Committee was busy planning. Wait until Homecoming week to see what we've been up to all summer! (1S28)

This year's Homecoming Committee sincerely admits that this year's Homecoming will be the best ever. Even if we do say so ourselves. (1S28)

It's true! The best things in life are FREE. Homecoming 1979 is just that and it's one month away. Plan now and don't be left out! (1S28)

The Homecoming Committee wishes to recognize Mark Shanley and thank him for his help during the year and wish him much luck in the future. (1S28)

You're only going to LIVE once, and that's during Homecoming week '79 beginning Oct. 23-27. Let the good times roll! (1S28)

Countdown for Homecoming week is T-minus 24 days and counting. Be prepared for blast off on Oct. 23! (1S28)

Come on gents it's your big opportunity to impress that young lady. Homecoming '79 is free admission! It couldn't be simpler. (1S28)

inspiration

Rev. John B. Fitzgerald, O.P. discusses Gospel of John at Bible classes Monday evenings, 7 p.m. Friar Hall, St. Dominics. Free. Bring Bible. Everyone welcome. Next session Oct. 1. (1S28CK)

housing

Female roommate needed to share the bottom half of a 3 bedroom house, Illinois Avenue, \$85 per month. Utilities included. 746-8511 (1S28CK)

Roommate needed to share 2 bedroom apartment with handicapped male; Room, board, and all utilities free; 15 minutes from campus in Austintown's Westchester Square; contact Virgil Farnsworth at (216) 525-7379 or Rosemary Flannagan at 742-3508. Transportation not necessary. (409C)

Rooms Available by the month Wick Motor Inn, 777 Wick Avenue. Includes heat & air conditioning, linens, maid service, color T.V., message service, lg. parking lot. \$180 single, \$200 double. Solar Realty, 220 West Rayen Avenue, 747-9211. (10026C)

Furnished and unfurnished Apt. for rent, University & Wick Park Area. Includes appliances & Utilities. \$135 - \$195. Solar Realty 220 West Rayen Avenue, 747-9211. (10026C)

grieks

Attention YSU fraternities and sororities. Hope you're preparing for the Homecoming roster of events. Let the good times roll. (1S28)

Come party with Phi Sigma Kappa Friday, Oct. 12. (2928CK)

Girls! Today is the last day to sign up for open rush! Remember the party tonight at 7 p.m. in the Ohio Room! See ya there. (1S28CK)

help wanted

Accounting students. Earn while you learn! Work around your university schedule. Hubbard Lumber, Inc. 534-1913 or 534-5704. (1928CK)

Help wanted—3:15 to 5:15 p.m. weekdays. Woman student to bring girl from Kennedy School to home near campus. \$20 per week plus free reserved on-campus parking all hours. Call 746-2790 evenings. (202CK)

Student's needs are main concern for new assistant dean Edna Neal

A new environment, a challenging job and new ropes to learn at YSU have confronted Edna D. Neal, newly selected assistant dean of student affairs. Neal, former resident of Pine Bluff, Ark., maintained a southern calmness as she assumed her position last August.

"My utmost concern in this position is seeing that students' interests are given maximum consideration," she stated. Her office, located in Room 100, Kilcawley Center, will be open for students to discuss their concerns, interests and problems.

According to Neal, student related matters will take precedence in office operations. "We want to make sure that this office is run such that the student knows that the university is for the students rather than the reverse," she said. "I want to make sure that this office does not get involved in overwhelming red tape, so that students may identify it as being a place where they can find help and be able to work out some problems," she added.

Neal's responsibilities as assistant dean include international student affairs, health services for Kilcawley Dorm residents, discipline, and research. The research

conducted will serve to better inform administration about student needs.

As assistant dean of student affairs, Neal must represent both students and administration. She finds that the interests of these two groups are not exclusive of each other. "My role is to better coordinate the way these two facets of the university overlap," she stated.

She will report to Dean of Students Charles McBriarty and filter information back to the students when it is important.

Neal had been active in student affairs work since 1969. Both her work and other professional activities have included experiences in counseling and testing, research, career development, reading and study skills and contemporary race relations.

Neal graduated from the University of Arkansas in 1965 with a B.A. in sociology/social sciences. She received an M.Ed. in counselor education in 1973 and obtained her Ed. D. in higher education Administration from Indiana University last year.

From her undergraduate experiences she became interested in counseling. As she became more involved in higher educa-



Edna Neal

tion, the administrative aspects of working with students on this level dominated other career alternatives.

Although she has been at YSU for a short time, Neal has been positively affected by her new environment. "My initial reaction is that the people here are warm people, receptive people, and energetic people. They are people who are about the business of moving themselves in a forward moving university," she said.

Job opportunities for fall grads

Degree/Major & Job Description	Preferred Grads	Company	Date
Bachelor's degree: Adv./PR, General Admin., Fashion Mkt., and Retail Mkt. Merchandise Management Trainees.	Dec., 1979	J.C. Penny Company	Oct. 2 Monday
Bachelor's degree. Marketing Representatives 7½ weeks training in Arlington, Texas. Relocation is required.	Dec. Alumni	Evans-Black Carpet Carpet Mills, Inc.	Oct. 2 Tuesday
Schedule 1 - Tire Group, Technical	Dec. 1979 & March 1980	The B.F. Goodrich Company	Oct. 2 Tuesday
Schedule 2 - Tire Group Plant Technical Associate			
Schedule 3 - MIS Associate Program. Job descriptions are posted.			
Bachelor's degree: ME/EE/MET/EET for project, maintenance	Dec. 1979 & Alumni	Campbell Soup Company	Oct. 2 Tuesday
Research Assistants, Staff Engineers. Job descriptions are posted.	Dec. Mar. June & Aug.	University of Tennessee Space Institute	Oct. 4 Thursday
Schedule 1: Accounting grads for Management Trainee position. Must have 3.0 GPA	Dec. Mar. June	Republic Steel Corporation	Oct. 4 Thursday
Schedule 2: EE/IE/MetE/ME, EET/MET, and Ind. Mgmt. for production, quality control, and maintenance, staff engr.			
Schedule 3: Bachelor's degree: Computer Science/Math Computer Programmer Trainee in Cleveland			
Manager trainee position in Ohio, Indiana, Michigan, Kentucky. Associate and Bachelor degrees, except Education, with retail career interest.	Open to all	K-Mart Apparel Company	Oct. 4 Thursday

REMEMBER!! YSU INTERVIEW RESUME FORMS ARE DUE THE DAY YOU SIGN-UP. All interviews are conducted at the Placement Office. (Cont. on page 8)

Must have ID Beeghly facilities listed for recreational use

Recreational Use of the Beeghly Health and Physical Education Building for the 1979 Fall Quarter

University ID cards will be required for admittance into all facilities.

Natatorium

Monday: Noon - 1:30 p.m. and 7 p.m. - 9 p.m.
Tuesday: Noon - 1 p.m. and 7 p.m. - 9 p.m.
Wednesday: Noon - 1:30 p.m.
Thursday: Noon - 1 p.m.
Friday: Noon - 1:30 p.m. and 7 p.m. - 9 p.m.
Saturday: Noon - 3 p.m.

All service faculty, staff and married students must pay a \$5 per quarter fee at the Bursar's Office for each member of the immediate family desiring to use the pool. The receipt for this payment should be taken to Beeghly, Room 210 for lock, towel and basket assignment.

Loss of lock shall result in collection of a replacement fee of \$3 from the ID card owner. Loss of towel shall result in collection of a replacement fee of \$2 from the ID card owner.

The family member must present the ID card to the lifeguard at the desk on the pool deck each time they wish to swim.

All children under the age of 12, or any non-swimmer, must be accompanied by a responsible adult.

Gymnasium For Recreation-Intramurals

Wednesday and Friday: 6 p.m. - 10 p.m.
Except during home athletic contest.
Saturday from 8 a.m. 10 p.m. and Noon - 3 p.m.

Short Deck for Recreation-Intramurals

Monday, Wednesday, & Friday from 6 p.m. - 10 p.m.
Except during home athletic contests.
Saturday from 8 a.m. to 3 p.m.

Long Deck for Recreation-Intramurals

Monday, Wednesday & Friday 6 p.m. to 10 p.m.
Except during home athletic contests.
Saturday 8 a.m. - 3 p.m.

Weight Room

Monday, Wednesday & Friday from 2 p.m. - 5 p.m.
Tuesday and Thursday 7 p.m. - 9 p.m.

Handball - Squash

Monday - Friday 8 a.m. - 10 p.m.
Saturday 8 a.m. - 3 p.m.

The above times are with the exception of the following class times.

Monday 7:40 p.m. - 9:20 p.m.
Tuesday 6:30 p.m. - 8:30 p.m.
Wednesday 7:40 p.m. - 9:20 p.m.
Thursday 7 p.m. - 8 p.m.
Saturday 10 a.m. - 12 noon

Monday thru Friday from 4 p.m. to closing and all day Saturday the only entrance to Beeghly will be the door at Spring and Elm Street. An ID card must be presented to gain entrance.

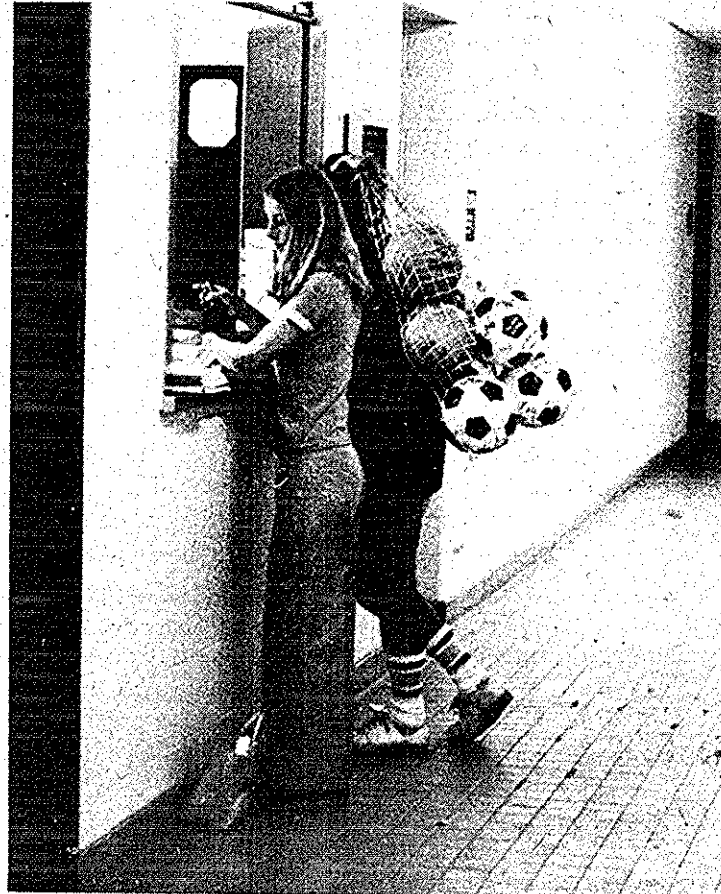
Palumbo

(Cont. from page 1).
ords indicate that she should not carry out the duties of a Groundskeeper II with her back injury, Polumbo's representative will also attempt to have YSU find her a position on campus with pay equal to that of a Groundskeeper II, and should provide her training for that position if needed.

YSU will be represented by Atty. Edward A. Flask. The hearing examiner, Franklin A. Martens, will make his recommendation to the Ohio Civil Rights Commissioners based on the evidence presented.

People are dying for your help. Give blood.

Red Cross is counting on you.



CHECK IN -- Two students check in at Room 210 in Beeghly Center to receive lock, towel and basket assignments before continuing with their activities. (Photo by Irene Manos)

CLIFFS NOTES

OPEN THE DOOR TO BETTER GRADES

Cliffs Notes help busy people...

- study more effectively.
- increase understanding of novels, plays and poems.
- review quickly for exams.

Come in today! We have more than 200 Cliffs Notes titles to help improve your grades and save time.

Available at:

B. Dalton
BOOKSELLER

Youngstown State UNIVERSITY

MAJOR EVENTS COMMITTEE PRESENTS

Saturday BEEGHLY CENTER 8:00 pm

OCT. 20

★ PETER ★ ★ FRAMPTON ★

special guest

★ EDGAR WINTER ★

TICKETS \$7.50 Y.S.U. STUDENTS IN ADVANCE ONLY AT KILCAWLEY CENTER CANDY DESK: \$8.50 GENERAL PUBLIC AT NATIONAL RECORD MARTS, OASIS RECORDS AND ALL TICKETRON OUTLETS.

Editorial

Growing up

With the initiation of the New Weekend Study Program, YSU may finally be stepping out of its childhood stage and approaching the threshold of adulthood.

From the time of its birth, the University has been changing and growing - slowly. Over the past decade or so, however, a "legitimate" campus has almost literally sprung forth, and YSU continues to grow in leaps and bounds.

However, that growth is basically physical, and much like the adolescent whose physical growth rate far exceeds the speed of his emotional, intellectual, and personal growth, YSU has a "body" much more "mature" than its internal academic "personality."

With few exceptions, academic matters at YSU have been progressing slowly compared

to the relative leaps and bounds of its physical counterpart. With the creation of the Weekend Study Program, YSU seems to be taking a major step towards helping the adolescent's internal growth catch up to its external physique.

The administration is finally starting to turn inward. The Weekend Study Program will make YSU and higher education, and not just a new sports facility or recital hall, available to more people. Education, the academic aspect of college, is the primary reason for a university's existence.

Let us hope that our academic growth is not stunted, for it has been much too long in coming. Even further, let us hope that the turn inward plunges even deeper. Perhaps as YSU matures, it can slow its concern with quantity and place a stronger emphasis on the quality of education it is providing.

CAMPUS SHORTS

Men's Swimming Team

Anyone interested in joining the YSU Men's Swimming Team is invited to attend a meeting being held on Wednesday, October 3 at 3 p.m. in the Beeghly Pool.

Bible Study

The Monday noon Bible Study, sponsored jointly by the Newman Center Community and Cooperative Campus Ministry will reconvene Monday, Oct. 1. The Study will concern itself with concern itself with *The Gospel of Saint John*, a text by Eugene Bonacci. The group is led by Deacon Joseph Rudjak, Associate Director of the Newman Center Community, and it welcomes new people.

For further information call the CCM office, 743-0439.

A PLACE

A Place, the student lounge available for quiet study, located in First Christian Church, corner of Wick and Spring, is open 9:30 to 2 p.m. Monday through Thursday. Coffee will be served, and a staff member is available for information relating to non-traditional students, etc. Call 743-0439 for further information.

Family Life Committee Meeting

The Newman Center Community's Family Life Committee concerns itself with matters and events related to families of various sorts: traditional, single-parent, extended, etc., and is open to new members and ideas from the student sector of YSU. Call chairperson Paula O'Neill at 744-0623 for further information.

(Cont. on page 5)

Urges preservation of Hopewell

To the Editor of *The Jambar*:

In Mahoning County, the remains of the first iron furnace in Ohio (The Eaton Hopewell), are being destroyed by natural erosion. Struthers Historical Society is applying for a matching grant from the Ohio Historical Society under the Department of the Interior, Historic Preservation Grants Program, for \$20,000. The funds will be used to place a protective covering over the site.

A matching grant is one where by the applicants must have the funds available (\$20,000) before funding of the project is awarded. Once the project is completed, the organization is reimbursed 50% of the amount paid.

For over 50 years, groups have tried to preserve this first iron furnace west of the Allegheny Mountains. It is now reaching a critical period of its existence. Deterioration of the site, due to freezing, thawing and rain, will soon leave little to preserve.

Action must be taken soon to cover the remains, if any artifacts are to be saved.

History students, clubs, sororities, fraternities and historical societies interested in donating funds to worthwhile projects this year, are requested to consider this preservation project.

The furnace represents the beginning of our history in the metal industry. This humble birthplace has touched the lives of all residents in Mahoning County.

If you would like to make a donation, send a check or money order to the Struthers Historical Society, Mr. Leo Hosa, Treasurer; 1936 Sequoia Drive, Youngstown, Ohio 44514.

Marian Kutlesa
Senior, A & S
President
Struthers Historical Society

The Jambar
Kilcawley Center, Room 16B
Phone: 742-3094 & 3095

Editor-in-chief: Barbara Janesh
News Editor: Liz Lane
Managing Editor: Diana Cicchillo
Copy Editor: LuWayne Tompkins
Sports Editor: Ron Anderson
Free Time Editor: Neil S. Yutkin
Advertising: Jane Bostjancic, manager, and Patricia Rogers, sales manager
Advertising staff: Laura Bukovi, Bill Oberman
Darkroom Technician: Irene Manos
Compositors: Christy Phillips, Judy Snier, and Kim Deichert
Vartypist: Sue Vitullo
Secretary: Millie McDonough
Advisor: Carolyn Martindale

The views and opinions expressed in *The Jambar* do not necessarily reflect those held by *The Jambar* staff, YSU staff, faculty, or administration.

Requests letters to ease burden

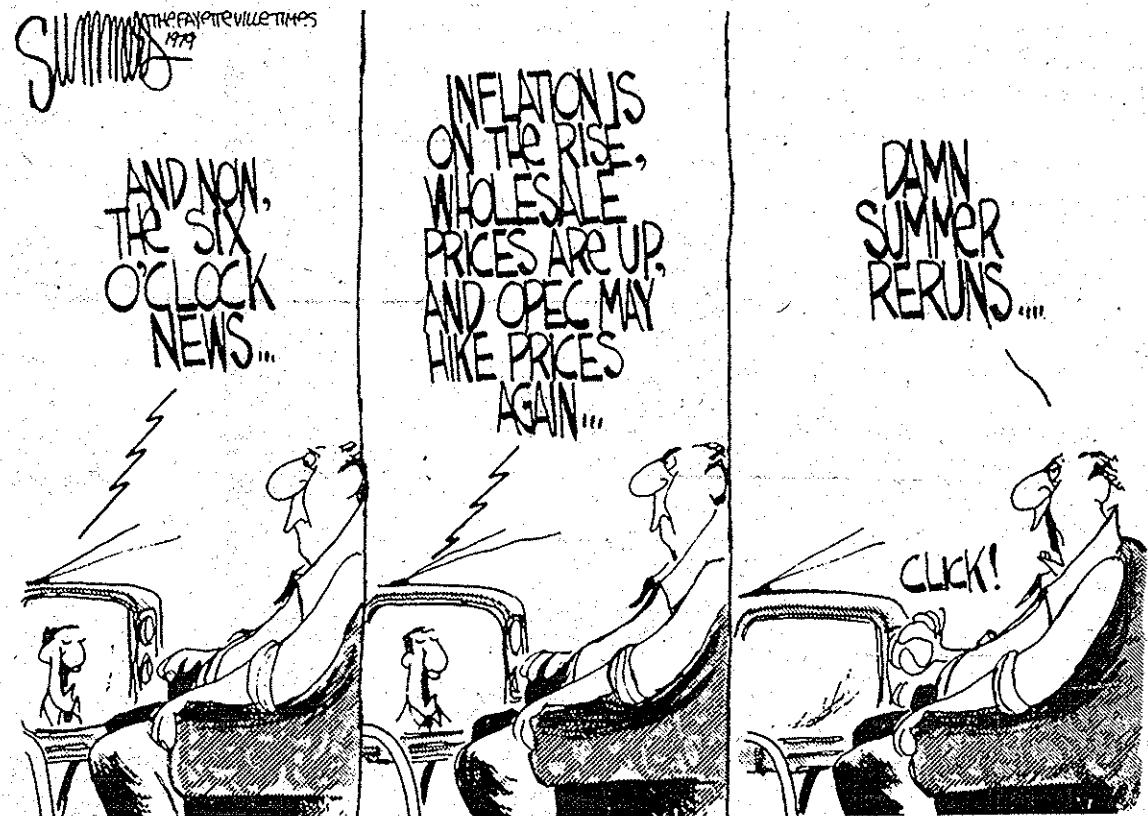
To the Editor of *The Jambar*:

Prison is a heavy burden and a lonely one, particularly when you lack the therapeutic touch of caring friends. As a first time offender, I lack this.

In short, I am writing this letter in hopes that you will publish it and thereby open the doors for new friends. In closing, let me emphasize that any and all who care enough to write will be answered.

Dan J. Hansen
Age 27
Reg. No. 145-527
Box 45699
Lucasville, Ohio 45699

THE JAMBAR
is now located
in Kilcawley
Center, room
16B beneath
the bookstore.
New phone no.
-742-3094



Laughline

Dana razing deserves quality protest

by Sam Ippot

I enjoy reading about a good organized protest every now and then. You know, the kinds with the signs harmonized chants and uniform dress codes.

The Vietnam era was a fruitful time for ambitious protesters. However, the standard of quality of protesting has dropped to a level hazardous to the American student's way of life.

The last well-organized protest this campus has seen was when some students dressed up like the Unknown Comic and demonstrated against the Shah.

It is really hard for me to understand why the throngs of historical landmark lovers who passed by the Dana School daily just stood and watched as a valuable historical monument went down in history. (Pun intended.) Why did they not organize, donning three cornered hats and muskets and protest a cause they so believed in, as did their four-

fathers (or was it five?) two-hundred and four years ago?

The Disciple House would have been an ideal signal tower, as in one by if land, two if by sea, three if by freeway, to signal a horesback rider and arouse campus minutemen.

It was equally hard for me to understand why anybody would want to tear down that helpless building anyway. It didn't hurt anybody.

I can just imagine what kind of people would decide to tear down the Dana school. They are the kind who stir steaming kettles filled of animal parts and stand hunched over like vultures. They bring the best ideas for disabobical deeds in these people, like hiking tuitions and razing little old helpless buildings during the summer quarter when most patriots are thronging to historical beaches and funspots.

Unfortunately, we cannot resurrect Dana Hall, but we can

do something to satisfy revengeful parties. One is to appoint a student commission to underwrite malicious administrative recreational functions (SCUMARF) whose purpose would be to check summer administrative decisions and to organize national-television-coverage-quality protests when they are deemed necessary. "Minicam" quality is not enough.

Another is to erect several one room, no modern convenience, Abe Lincoln style, dirt-floor school houses on the old Dana site. If a few extra bucks are available, erect them with big bells at the top. This would satisfy the historical-building hungry throngs who need old buildings to vent their intimate desires.

These schoolhouses can be used as offices for those who had any say in tearing down Dana, and as classrooms for those students that chose to protest at the wrong time.

CAMPUS SHORTS

(Cont. from page 4)

Cavaliers Exhibition Game

The Cleveland Cavaliers will play the Detroit Pistons in an NBA pre-season exhibition game 8 p.m., Tuesday, October 2, in Beeghly Center. The event is sponsored by the YSU Alumni Association. Tickets are on sale now at the Beeghly Ticket Office at \$6 for reserved seats and \$5 for general admission.

Kismet Auditions

Auditions for *Kismet*, Spotlight Theatre's first play of the season, will be held Monday and Tuesday, October 1 & 2, 8 p.m., Ford Auditorium in Bliss Hall. All students are welcomed to try out.

A Study of Personality Differences

Earn \$2.00 and course credit (in some courses) for participating in a study of personality differences between male and female; Black and White college students between the ages of 18 and 30. It is open to both undergraduate and graduate students.

The study takes about three hours and is conducted in two sessions. It involves social science research methods, personality and ability assessment procedures and the use of on-line computerized methods.

The list of participating professors and a sign up sheet is available in 2087 Cushwa Hall of contact: John Truman, Graduate Research Assistant or Joseph Waldron, Ph.D., Assistant Professor/Criminal Justice, campus phone 3281.

YSU Varsity Rifle Team

There will be a meeting 3 p.m., Friday, Sept 29, in the Rifle Range Room (Room 116) Beeghly for anyone interested in joining the YSU Varsity Rifle Team.

Graduation Application Deadline

The application for fall quarter graduation is 5 p.m., Monday, Oct. 1. Application is handled at the dean's office in the college in which you are enrolled.

Volunteers Needed For Placement Office

The Volunteer Information & Referral Service is recruiting students to serve as volunteer office assistants in the Placement Office in Jones Hall, Room 324.

Training for the positions will be given for any responsible students interested in gaining the experience for skills obtained from managing a student organization. For further information call 742-3399.

Arts and Science Graduates

Any Fall 1979, Winter, Spring or Fall 1980 Arts and Sciences graduate who has not applied for a senior sheet is urged to do so now in the dean's office, Arts and Sciences Office Building.

(Cont. on page 12)

THE DANA CONCERT SERIES
1979 FALL QUARTER

The Monday Series
(Bliss Choral/Recital Hall at 8 p.m. unless otherwise noted)

- Oct. 1 Music for Voices, Piano and Harp
Wade and Rosemary Raridon, tenor and soprano
- Oct. 8 Faculty Ensemble
- Oct. 15 Arias and Songs of Mozart, Strauss, Verdi and Berloiz
Wendell E. Orr, bass
- Oct. 22 David E. Starkey, tenor
- Oct. 29 YSU Wind Ensemble
Robert E. Fleming and Joseph E. Lapinski, directors
Guest Artist: Timofei Dokshitzer,
Premier trumpet soloist in the Soviet Union
Stambaugh Auditorium
- Nov. 5 YSU Chorale
Wade Raridon, director
Music from Josquin to Rodgers and Hamerstein,
including Bach, Mendelssohn and Nystedt
- Nov. 19 Contemporary American Theatre in the Round Room
Donald E. Vogel, director
Experimental Theatre
- Dec. 3 William K. Miller, organist

The Wednesday Series

(Bliss Choral/Recital Hall at 8 p.m. unless otherwise noted)

- Oct. 2 Music for Trombone and Organ
Vern L. Kagarice and Ronald L. Gould
Works by Guilmont, Watenseil, Corelli, Kroll
- Oct. 10 Loyal B. Mould, oboist
- Oct. 17 Guest artist
Saxophonist William Perconti
- Oct. 31 Student Recital of Woodwinds and Strings
Walter S. Mayhall, director
- Nov. 7 Contemporary Music Ensemble
John R. Turk, director
- Dec. 5 Carols and Coca
- 3 p.m. YSU Trombone Choir and Madrigal Singers
Vern L. Kagarice and Wade Raridon, directors
Bliss Lobby

Special Sunday Series

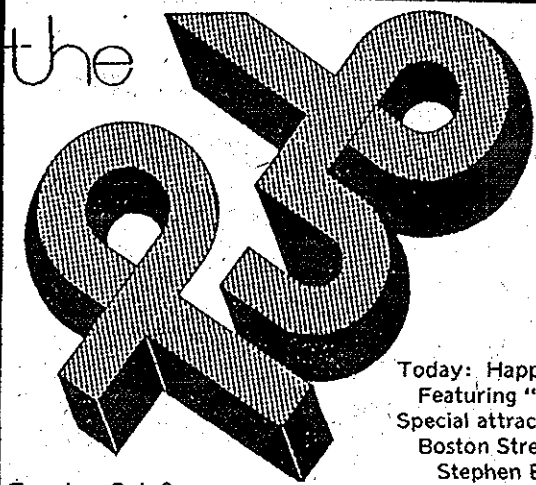
- Nov. 5 University Chorus
8 p.m. Music for Advent and Christmas
- Dec. 2 YSU Concert Choir
8 p.m. Ronald L. Gould, director
Ronald Nelson Christmas Story
Seasonal Motets and Carols
St. John's Church

Student Recitals

Student recitals occur on Fridays, beginning at 7 p.m. in the Bliss Choral/Recital Hall. Please check with the Dana School of Music office for information-742-3637.

Friday Convocations


- (11:00 a.m., Bliss Choral/Recital Hall)
- Nov. 2 Voice
- Nov. 9 Contemporary Ensemble
- Nov. 16 Concert Choir and Chorale
- Nov. 30 Brass



Today: Happy Hours 1 - 4 p.m.
Featuring "Gopher Broke"
Special attraction at 9 p.m.!

Tuesday, Oct. 2
Open Auditions for Pub Coffeehouse
Sign up now in Kilcawley Staff Offices
Auditions 8 - 11 p.m.

Monday, Oct. 1
Big Screen Football
9 p.m.
New England at Green Bay



Gallery displays 1960's artists

YSU art collection features prominent works

by Anita Joy Castronovo

"This collection is 22 works, hand-printed, numbered, and signed, all by historically important artists of the day," said Dr. Louis Zona, chairman of the art department, regarding Kilcawley's permanent art collection.

"All of the works are essentially originals, and are represented in major art history books and museums," he continued. "They were purchased primarily for the education of the YSU community," Zona said.

"Through them, an art history student can see high quality work and study the technique used by the various artists first hand," he explained.

"The collection has been gradually and carefully acquired over the last five years," noted Phil Hirsch, director of Kilcawley Center.

"The Program Board (KCPB) got the original idea and an art gallery committee, consisting of interested volunteer students and faculty, was formed," he continued.

As the committee, on which Zona is an advisor, chose art objects for display in the gallery, a few prints were singled out to be purchased and included in the permanent collection.

Displays for YSU's gallery are selected from prestigious galleries located in major cultural areas such as New York, Cleveland, Pittsburgh and Washington D.C.

"Much time has been spent on the selection of works to be purchased," Zona remarked. "The committee has three criteria which it must meet. The works must be original, historically important, and of the highest quality," he continued.

The existing collection meets all of these standards and more. The works are primarily by American artists of the post-World War II movements. They are rendered by important artists of national and international recognition.

The collection has grown in value over the years. Artists are represented which became known in the 1960's, such as Andy Warhol, Roy Lichtenstein, Jim Dine, and Jasper Johns. "An added dimension of prestige is attributed to a gallery which houses a permanent collection," Zona stated.

The gallery is run by the KCPB. Students on the art gallery committee do the work of unpacking and displaying the art, tending the gallery during visitor hours to answer questions and to pass out brochures, and pack up the collection when the display is over.

Soon the packing and unpacking process may not be necessary for Kilcawley's collection, however. Plans are in the offing to enclose the outdoor sculpture court just beyond the existing gallery to house the collection on a permanent basis.

The most recent acquisition to the collection was an etching by Robert Motherwell. An original silkscreen of Jackie Onassis by Andy Warhol is also a memorable part of the collection.

"The heart and central focus is *Untitled* by Jasper Johns," said Zona. "It is a highly seductive visual image of the character of Johns, and it manifests his per-

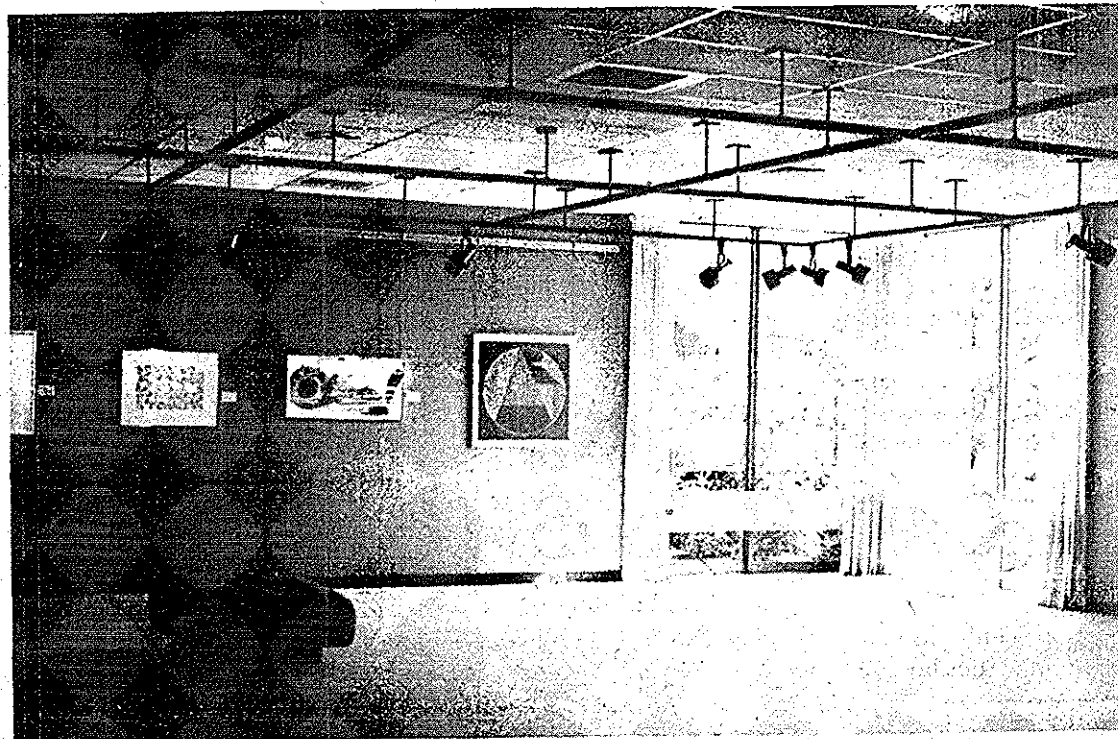
fection as a craftsman of contemporary printmaking," he went on.

"These are rare prints which are seldom seen on the market today," Zona stated. "Many of them represent mediums of expression for which the artists are not typically known, which increases their value and rarity," he explained.

The collection is on display now in the student gallery. There is

no charge and the public is welcome.

The gallery is located across from the music listening room on the 2nd floor of Kilcawley Center. Hours are Mondays through Thursdays, 10 a.m. - 3 p.m., and Fridays, 10 a.m. - 3 p.m.



WORHOLS, DINES AND JOHNS — The works of prestigious artists like Andy Warhol and Jasper Johns are on display in Kilcawley Art Gallery. During the past five years KCPB has been acquiring these paintings for their permanent collection. (Photo by Irene Manos)

Now Accepting Membership

for The Mathematics and Computer Science Club

(all majors are welcome)

Objectives:

To afford an opportunity for students of YSU who are interested in Mathematics and Computer Science to become better acquainted with these subjects.

To foster an interest and pride in Mathematics and Computer Science.

To become acquainted with fellow students studying the Mathematics and Computer Science courses.

To become more acquainted with community resources and graduate Mathematics or Computer Science facilities.

Activities:

Tours of Universities and Computer facilities.

Speakers

Weekend Outings—such as Hayrides, Canoeing, Skiing.

Friendly rivalry with the Computer Tech majors.

Currently considering an intramural volleyball team.

In joining the club come to the first meeting. NO Obligation

Meetings:

TIME
Begins at 3:00 pm
Ends at approximately 4:00 pm

PLACE
Cushwa Hall
Room 1121

DUES
Paid yearly \$2.00

If you cannot make the first meeting and are interested in joining the club, then contact:
Chris 755-3383
Debbie 799-9333
Jim 758-2468

Bids open for Homecoming king/queen contest Oct. 1

For all of you who might be dreaming of becoming King or Queen of the '79 Homecoming, now is the time to act. Any junior or senior in good academic standing who would like to make this dream a reality should pick up an application in the Student Activities Office, 2nd floor, Kilcawley Center. These applications along with 60 signatures on a petition must be returned by 5 p.m. Oct. 3.

Once the applications are returned, a process of elimination occurs. This involves determining which students are most outstanding in the University and in the community. A point system is used based on the number of activities in which an applicant has participated. The ones compiling the points for the elimination include: Mark Shanley, Coordinator of Student Activities; Mary Sullivan, Chairman of King and Queen Committee; Carol Haywood, Assistant to Mark Shanley and Homecoming committee; Paula Moss and Mary Jane

Klempay co-chairman of the Homecoming Committee.

The number of applicants will then be reduced to 12 semifinalists. These 12 students will be interviewed by six judges to determine what extracurricular activities are important to their career goals. Then the number of semi-finalists is reduced to six.

After the six finalists are chosen, the YSU student body will be given the opportunity to choose the lucky couple. Student voting will be held 9 to 7 p.m. Tuesday and Wednesday, Oct. 23 and 24, in the Kilcawley Center Arcade. These three couples will share the spotlight through Friday's Oct. 26 dance, and Saturday's parade in Austintown. Then they will be taken to the game against Western Illinois where the King and Queen will be announced. The dance Oct. 26 is being held 9 p.m. to 1 a.m. in Kilcawley Center with "Sky's the Limit" providing entertainment.

KILCAWLEY CENTER - FALL QUARTER HOURS

BUILDING HOURS

Monday - Thursday	7 a.m. - 11 p.m.
Friday	7 a.m. - 1 p.m.
Saturday	8 a.m. - 1 p.m.
Sunday	Closed
Exceptions	
Monday, November 12, 1979	Closed
Thursday - Saturday	Closed
November 22-24, 1979	Closed
Friday, December 7, 1979	7 a.m. - 8 p.m.
Saturday, December 8, 1979	8 a.m. - 5 p.m.
Art Gallery	
Monday - Thursday	10 a.m. - 8 p.m.
Friday	10 a.m. - 3 p.m.
Bookstore	
Week of September 24, 1979	
Monday - Friday	8 a.m. - 8 p.m.
Saturday	9 a.m. - noon
Beginning October 1, 1979	
Monday, Tuesday	8 a.m. - 8 p.m.
Wednesday - Friday	8 a.m. - 5 p.m.
Saturday	9 a.m. - noon
Candy Desk	
Monday - Thursday	7 a.m. - 10 p.m.
Friday	7:30 a.m. - 6 p.m.
Saturday	8 a.m. - 2 p.m.
Crafts Center	
Monday - Thursday	10 a.m. - 8 p.m.
Friday	10 a.m. - 6 p.m.
Dollar Bank	
Monday - Friday	9 a.m. - 4 p.m.
Duplication	
Monday - Friday	8 a.m. - 8 p.m.
Saturday	8 a.m. - 2 p.m.
Food Service	
Brief-eater	
Monday - Friday	7 a.m. - 3 p.m.
Creamery	
Monday - Thursday	7:30 a.m. - 9 p.m.
Friday	7:30 a.m. - 5 p.m.
Snack Bar	
Monday - Thursday	7 a.m. - 10 p.m.
Friday	7 a.m. - 6 p.m.
Saturday	8 a.m. - 5 p.m.
Wicker Basket	
Monday - Friday	11 a.m. - 2 p.m.
Information Center	
Monday - Thursday	10 a.m. - 7 p.m.
Friday	10 a.m. - 5 p.m.
Saturday	9 a.m. - noon
Music Listening	
Monday - Friday	8 a.m. - 10 p.m.
Pub	
Monday - Thursday	9 a.m. - 11 p.m.
Friday	9 a.m. - 1 a.m.
Saturday	noon - 1 a.m.
Recreation Room	
Monday - Thursday	8 a.m. - 11 p.m.
Friday	8 a.m. - 8 p.m.
Saturday	10 a.m. - 2 p.m.

Info Center now open to students

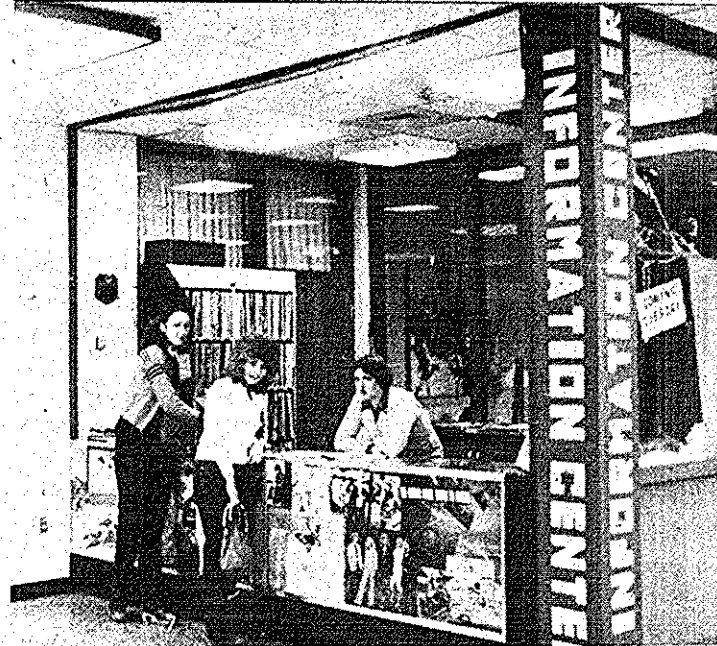
The first day of fall quarter classes will mark the beginning of a new service on campus - a Campus Information Center.

The Campus Information Center will serve as the primary information source on campus for both in-person and telephone access.

The Center will be located in the current Music Listening Room at the second floor Spring Street entrance to Kilcawley Center. The Center will be staffed by students who, as current or former new student orientation leaders, have been extensively trained in the many facets of YSU operations and procedures.

The Center will be closed during quarter breaks. A special information telephone message of coming campus events being provided when the Center is closed.

It is hoped that the Campus and surrounding community. Anyone who has information from a department or organization appropriate to the Center, should forward it to Phil Hirsch, director of Kilcawley Center in writing.



INFORMATION GIVEN HERE - The new Campus Information Center located on the second floor of Kilcawley Center. (Photo by Neil Yutkin)

VIDEO ARTS
in concert
THE ROLLING STONES

Monday -- noon Thursday--10 a.m.
Tuesday-- 11 a.m. Friday--11 a.m.
Wednesday--8 p.m.

Shown in Program Lounge and Pub

KCPB

Wendy's presents
the hot n' juicy SPECIAL

Wendy's OLD FASHIONED HAMBURGERS

PEPSI

WENDY'S THANK-YOU COUPON

ON YOUR NEXT VISIT
THIS COUPON GOOD FOR A SINGLE FRENCH FRIES AND A 12 OZ. SOFT DRINK FOR ONLY \$1.59.

Good only at participating Wendy's. May not be used in combination with any other offer. Expires: Oct. 14, 1979. CHINESE AND TOMATO EXTRA.

WENDY'S THANK-YOU COUPON

ON YOUR NEXT VISIT
THIS COUPON GOOD FOR A SINGLE FRENCH FRIES AND A 12 OZ. SOFT DRINK FOR ONLY \$1.59.

Good only at participating Wendy's. May not be used in combination with any other offer. Expires: Oct. 14, 1979. CHINESE AND TOMATO EXTRA.

WENDY'S THANK-YOU COUPON

Administration studies student attrition rate

by Tim Fitzpatrick

Declining enrollment at YSU has resulted in the appointment of Marguerite Foley, assistant director of Affirmative Action, to the newly created position of coordinator of attrition-retention studies by YSU President John Coffelt.

This appointment has taken place due to the efforts of the Task Force on Student Retention, a committee formed during spring quarter of 1979 in order to study means of helping to lower the potential drop-out rate toward graduation.

Foley's responsibilities, reports Dr. H. Thomas McCracken, chairperson of the task force, are to collect further data on student retention and to put other proposals of the task force into action.

McCracken further states that the retention program's ultimate goal is to provide better counseling and advisement, as well as to increase campus services for the student.

He says he feels that by "treating students like students and not like numbers" the chances for further study and eventual graduation are increased.

Advisement and counseling changes are to take place in the

form of more extensive placement testing programs so as to better match the students' abilities with their future course of study.

Also, orientation of new students is to be conducted on a more personal basis with each student being advised by a counselor who has reviewed the students' placement tests and is aware of each student's needs.

Campus services, proposes the task force, should increase their hours of operation to accommodate night students and Weekend Study Program students. A listing of all services available is being compiled for distribution.

Steps toward better student services, such as the opening of the writing center (Engineering Science Building), the reading center (Education Building) and the newly opened math center (C.A.S.T.) have been taken with hopes of improving the student retention rate.

The retention committee has also proposed the undertaking of extensive research on the problems of minority students in order to develop programs dealing specifically with these difficulties.

Placement interviews

(Cont. from page 2)

Must be YSU student; cannot take 8 a.m. classes. Loading and unloading delivery trucks. Hard physical exertion required. Potential year-round positions.	Open to all	United Parcel Service	Oct. 3 Wednesday
Bachelor's or Master's degree: Mechanical Engineering. Mechanical Design-starting at detailing level, with an opportunity to move up to design and project manager level.	Open to all	Paxson Machine Company	Oct. 4 Thursday
Associate degree: Electrical Engineering Technology. Quality Test Technicians.	Dec., Mar. & June	Sperry Flight Company	Oct. 4 Thursday
Bachelor's degree: Electrical and Mechanical Engineering; Electrical and Mechanical Engineering Technology. Repair Service Sales Engineers - understand rotating equipment and interested in "hands-on" activity. Trouble shooting problem areas relative to motors & drives systems. Six months training in Cleveland. Relocation to major metro area. No over-night travel.	Dec. Mar. & June	Reliance Electric Company	Oct. 4 Thursday

Skeggs lecture series

(Cont. from page 1)

Auditorium. Califano comes courtesy of the Skeggs Lecture Series, which is endowed by the Skeggs Foundation instead of the General Fee as are the other lectures. All lectures are free and open to the public. There are no tickets required, and seating is on a first-come, first-serve basis. For further information on any of the lectures call 742-3496.



FALL QUARTER KICK-OFF DANCE

with

LANDS END

Friday, September 28

9 pm - 1 am

Kilcawley Center Chestnut Room

Door Prize: Win a free 10-speed bike from Hardee's

Free and open to all YSU students

Co-sponsored with Student Government

Butler opens celebration of 60th year October 7

The Butler Institute of American Art will celebrate its sixtieth anniversary beginning Sunday, Oct. 7, with festivities continuing through the rest of the month.

The opening day of the celebration will feature the unveiling of two new paintings, which have been just recently purchased to commemorate the gallery's sixtieth year. The museum will be open from 1 p.m. to 4 p.m.

The following Saturday, Oct. 13, a dinner-dance will be sponsored by The Friends of American Art. This organization, founded in 1941, has been very supportive over the years in contributing to the growth and maintenance of the institute.

The museum will be the setting for a lecture by Anne Lockhart of the Cleveland Art Museum, Thursday, Oct. 18.

The founder of the Butler Art Institute was Joseph G. Butler, Jr. He first became interested in art in the early 1870's when he had his portrait painted by an artist named Cogswell in Chicago.

After that he began a collection in his own home, which was located across from the present day building. In 1917 a fire destroyed the collection, so Butler decided to build a structure to house a new collection.

It opened Oct. 15, 1919, and became the first museum in the United States comprised solely of American art. Today there are only three such museums in the U.S.

The first painting Butler purchased was entitled *Snap The Whip* by Winslow Homer. It still hangs in the museum today and is one of its most popular paintings. It is also considered to be the artist's finest work.

The original collection, which started out with 80 pieces, has grown to over 4,000 items. It includes oils, watercolors, prints, drawings, sculptures and ceramics.

Joseph G. Butler III, the present director, hopes to continue to expand the collection. He says that the museum tries to keep up with the time by acquiring a broad range of items including national and regional art.

When asked about future plans for the Institute, Butler replied, "We are striving to keep the collection going, but we don't have nearly the space." He did say that he hopes to enclose the back courtyard and to expand the facilities at the rear of the building.

The relationship between YSU and the Institute has been a good one. Every May the art department, at the invitation of Dr. Butler, sets up an exhibit in the museum displaying works by YSU art students.

Some students have served internships at the museum and students and faculty are always invited to shows held at the Institute. "The doors have always been open for our classes," stated Dr. Zona, head of the art department.



THE NEWEST ADDITION — Joseph G. Butler admires one of two new paintings at the Butler Institute of American Art. (Photo by Irene Manos)

THE STROH BREWERY COMPANY, DETROIT, MICHIGAN © 1978

"What an act! . . . and he gets to do it twice a night."

Stroh's
For the real beer lover.

Men and Women

Majoring in Business

The Time Is Now
To Start Thinking Professional

ALPHA KAPPA PSI
THE PROFESSIONAL BUSINESS
FRATERNITY

cordially invites all of you to
attend the

Fall Quarter
OPEN MEETING

October 2 8:00 pm Kilcawley,
Room 216

Casual Dress Free Food and Drinks

Northern Iowa invades Penguins to face conference foe

by Ron Anderson

A quick look at this week's opponent for the YSU football team should give you the idea that this will be the best game of the young season.

The Northern Iowa Panthers sporting a 2-2 record visit Falcon Stadium this Saturday evening to do battle with the Penguins.

"I think we're going to have a real tough ballgame," stated YSU coach Bill Narduzzi. "Obviously the toughest one we've had so far."

Northern Iowa's record is deceptive because they were not picked to be one of the better teams in the conference. One of the Panther's two wins came in their only conference game so far, an 11-7 victory over Northern

Michigan.

In Kelly Ellis and Nelson Berry the Panthers feature two of the conference's more exciting runners. This duo has accounted for almost 650 yards of Northern's offense in the first four games. "They have some outstanding skill in their backfield," commented Narduzzi. "Those two little guys have speed to burn."

This will be the first conference game for the Penguins this season as they set out to defend last year's conference championship. Last season YSU posted a 5-0 mark when they became the conference's first champs.

This past Saturday the Penguins gained one of their more decisive wins of the season with a 24-3 thumping of Ashland. "We

played with more intensity last week," said Narduzzi. "and we expect to keep improving."

The injury bug that has hit the Penguins in past games continues to be a problem as defensive end Billy McDermott and defensive backs Tom Jaros and Fred George are listed as doubtful. Tackle Jeff Lear and defensive tackle Marvin Sperlazza are listed as probable after minor injuries. On the positive side, center Sam Grooms will be back in action after taking last week off.

The football fortunes of the Penguins continue to look brighter as the season progresses. "As long as we continue to improve by getting a little bit better each week and continue to win, I guess that's what it's all about," related Narduzzi.

* ATHLETE OF THE WEEK *
* The honor of this week goes to Brett Modic, a linebacker on the *
* YSU football squad. Brett, a junior from Willoughby, Ohio, was in on *
* 13 tackles. Three of his tackles resulted in losses for Ashland. Good *
* job Brett! *

Let the GOOD TIMES roll!

NOMINATE

A KING OR QUEEN CANDIDATE

The 1979 Homecoming Committee is again sponsoring the traditional King/Queen competition to recognize the achievements of outstanding Junior and Senior YSU students.

Applications available at the Student Activities Office on Monday, October 1.

Candidates must fill out the application completely, acquire 60 signatures on a petition and return both the application and petition to the Student Activities Office no later than 5 p.m. Wednesday, October 3.

Open to all full time Junior and Senior YSU students.

Sponsored in conjunction with Student Government.

Homecoming '79

Blocking key to first 3 Penguin wins, offensive line coach Dove praises seniors

by Tony Brudis

When children play football, it seems that every one wants to be a quarterback, receiver or running back on offense. Who wants to block? You never receive the ball or any recognition.

At YSU, Head Coach Bill Naruzzi and his staff have the luxury of a fine offensive unit, including senior quarterback, Keith Snoddy and wide receiver Jim Ferranti.

But without the aid of a fine blocking unit, success would turn to failure and stardom would not exist.

Starting his eleventh campaign as YSU's offensive line coach, Bob Dove is elated at this year's starting line, which includes seniors Jeff Lear, Tom Clifford, Steve Brooks and tight ends Carey Orosz and Tom Meola.

"We have the ability and size along with experience on the line this season," stated the former pro football player Dove. "Our offensive line improves every game and practice," he continued.

Spearheading the Penguin's line is 6-4, 280-pound tackle Jeff Lear. Termed the "extra coach," he begins his fourth season as a starter and letterman.

"Lear knows as much about the offense as the coaching staff. He has a great football knowledge and instinct," commented Dove. "The only problem is that I don't have more like him."

Lear has been a model of consistency since joining the club from an Elyria high school. He's the only YSU player to make the Penguin Pack every week during the past two seasons. The business administration major is heavily counted on this year.

Lining up next to Lear on the right side is 6-5, 255-pound Tom Clifford. A key member of the offensive unit, the former Labrae High athlete can play either tackle or guard. According to Coach Dove, the two-year letterman Clifford should have his finest season this year and it is hoped that he fills the vacancy of last year's co-captain, Tom Farina.

"We couldn't ask for two better blockers than Clifford and Lear. Tom is one of the best blockers at YSU this season," stated Dove.

Anchoring the left side of the line is Steve Brooks, a native of West Mifflin, Penna. The 6-3, 245-pound two-year letterman was a starting guard last season but slipped a touch and lost his position.

"Brooks lacks agility, but makes up with his heart and desire. He is a very big and strong blocker and can get the job done," stated Dove. "Ever improving. Brooks plays with great

intensity and is expected to be a key lineman on the unit this season.

YSU has the luxury of two fine tight ends in Tom Meola, on the front side of the line and Carey Orosz, starting on the back side.

Meola, a two-year letterman, came to the Penguins as a wide receiver from Ashtabula. The 6-3, 200-pound receiver has been a definite asset to the club.

Orosz, the other tight end, was originally recruited as a punter and place kicker, and is challenging senior Chuck Haynali for those posts this season.

"Orosz worked like heck at the tight end position and is a real first-string player," stated Dove.



Steve Brooks



Jeff Lear



Tom Clifford



Tom Meola

Headline Machine Operator Needed (will train)

\$2.70 per hour

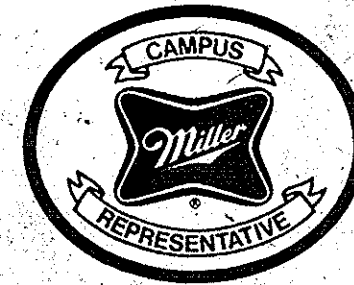
Monday Evenings Approx. 6-10 pm

JAMBAR 742-3094

Kilcawley Center 16 B

(beneath Bookstore)

WANTED:



Part-time, flexible schedule; Sales/Marketing position for enterprising student. Includes opportunity to attend a 3-1/2 day seminar in Milwaukee, Wisconsin. Interviews may be arranged by contacting...

Charles Rose

at 545-5483

© 1978 Miller Brewing Co. Milwaukee, WI, U.S.A.
Brewers of Miller High Life, Lite, and Löwenbräu Beers

Need a Part Time Job?

The Campus Escort Service
is now taking applications
in Room 265 Kilcawley

Application Deadline is
Friday October 5, 1979

CAMPUS SHORTS

(Cont. from page 5)

Swimming Meeting

There will be a preliminary meeting Monday, October 1, at 3 p.m. in the Beeghly Natatorium for anyone interested in swimming this year. No prior competitive experience is needed. Come prepared to swim.

Gymnastic Manager Needed

Any student wishing to serve as a manager for the gymnastic team should contact Assistant Athletic Director Pauline Noe as soon as possible. The applicant must be able to be trained in spotting techniques. Financial compensation is available.

Marketing Club

The Alpha Mu Marketing Club will hold its first meeting of the quarter at 9 p.m., Thursday Oct. 4, in Room 234, Kilcawley Center. Refreshments will be served and everyone is welcome to attend.

Athletics Needs Help

Any student wishing to participate in the YSU athletic program should contact either Athletic Director Paul Amodio or Assistant Athletic Director Pauline Noe as soon as possible. Positions are available not only for players but also for managers, statisticians, time keepers and other related jobs in the program.

Lifeguard Positions Open

Full time students with valid Advanced Lifesaving or Water Safety Instructor's Certification from either the Red Cross or YMCA/YWCA are invited to apply for the position of lifeguard at the Beeghly Natatorium. Application forms may be obtained from Room 307 Beeghly.



850 Penn 743-1312

ΣΑΕ

850 Penn 743-1312

**Welcomes All students to YSU
and a special Welcome to incoming freshman**

Upcoming social Activities

Monday

Rush Party Oct. 1st

Free and open to all YSU students

Friday,

Open Party Oct. 5th

\$1.00 admission and open to all

Tuesday

Rush Party Oct. 8th

Free and open to all YSU students

All parties 9 pm - ?

COME PARTY WITH THE SAE'S

