

## Work begins on phase two of East Campus Gateway

The street will be improved, utility pools removed and new lighting installed along University Plaza in the second phase of the East Campus Gateway project that gets underway this month.

"The goal of this project and similar improvements to the Elm Street entrance to campus is to enhance the appearance of two major gateways to the university," said John Hyden, YSU executive director of facilities.

"University Plaza in particular represents the university's front door, and it's important that we give prospective

students and parents, as well as visitors, a good first impression as they approach the core of campus."

The \$1.5 million project is funded with money from the state capital budget, which is one-time money that is restricted for use on capital improvement projects and cannot be used to fund operational expenses.

The project includes aligning University Plaza on the west side of Wick Avenue with Spring Street on the east side of Wick Avenue. It also calls for improv-

*continued on back page*

## Shearle Furnish named CLASS dean



Shearle Furnish

Outstanding campus comments. Dedication to liberal arts and social sciences. Belief in the critical role of faculty. Commitment to student success.

For these and other reasons, Shearle Furnish

has been appointed the founding dean of the new College of Liberal Arts and Social Sciences at YSU.

Furnish, who starts the new job on July 1, has been the head of the Department of English, Philosophy and Modern Languages at West Texas A&M University near Amarillo, Texas, since 2001.

"I look forward to Dr. Furnish's tenure at YSU," said Robert K. Herbert, provost and vice president for academic affairs. "During his campus visit, he made clear his dedication to liberal arts and social sciences. He especially finds great reward in recruitment and development of new faculty."

Herbert said his decision was strongly influenced by the broad support Furnish received from the campus community through written responses and meetings with students, faculty and staff.

As YSU's dean of CLASS, Furnish will provide leadership to nine academic departments – economics, English, foreign languages and literatures, geography, history, philosophy and religious studies, political science, psychology, and sociology and anthropology – and approximately 112 full-time faculty members.

"To be named founding dean of CLASS is a significant honor and a high calling," Furnish said. "I am eager to

*continued on back page*



### Pete and friends...

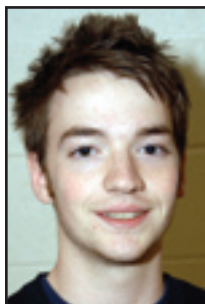
*Pete the Penguin is joined by mascots from other Ohio universities at a reception at the Ohio Statehouse in Columbus in March. The event, sponsored by the Inter-University Council of Ohio, was attended by university officials and legislators from across the state. Pete's friends are the Rowdy Raider from Wright State University, top; the Golden Flash from Kent State University, left; and Vike from Cleveland State University, bottom.*

## eUpdate exclusives

For more news about YSU, read these and other stories in eUpdate at <http://eupdate.ysu.edu>.

- Campus News Roundup features a presentation by the Penguin Icebreakers, the latest wedding fashions, a tour of Mahoning Valley housing by the Center for Working-Class Studies, how to dress for success, an opera by the Dana School of Music's Performing Arts Series and the demolition of vacant homes on the campus' west side.
- YSU students placed first in the steel bridge competition at the American Society of Civil Engineers 2007 Ohio Valley Regional Conference at Ohio State University.
- YSU Associate Professor of English and Teacher Education Jeffrey Buchanan is deemed "outstanding" by the Ohio Council of Teachers of English Language Arts.
- The education doctorate, attempting to serve dual purposes—to prepare researchers and to prepare practitioners—is not serving either purpose well, according to two national

# Student group hits it big with first production



Mike McGiffin

For Mike McGiffin, YSU Penguin Productions is more than a way to have a good time.

"Someday, I want to work in the music industry and supply and promote concerts," said McGiffin, a YSU junior finance and accounting major.

"So, this is great experience."

Penguin Productions, created last fall, is a new YSU student group whose goal is to stage events to better serve YSU students and the community. The group's first event – a concert on April 5 by Grammy Award-winning performer Ludacris – drew more than 3,000 people (including a fare share of YSU students) to the Chevrolet Centre in downtown Youngstown.

Penguin Productions, which is run by a board consisting of 12 students and 12

advisors, hopes to sponsor its next event next fall, tied to YSU's homecoming and the celebration of the university's centennial, said Joy Polkabila Byers, assistant director of Programs and Special events in Campus Recreation and Intramural Sports.

But the group is about much more than putting on a good show. "Priceless are the learning opportunities," Polkabila Byers said. "Students are able to apply concepts learned inside the classroom in the outside world."

Students learn marketing techniques, advertising and public relations, networking, budgeting and business management.

McGiffin, for instance, worked a lot on promoting the Ludacris concert, including flyers and banners.

"Aside from looking good on your resume, it gives me all the essential learning opportunities," he said. "It's going to help me learn everything I need to know."

For more information, visit the Penguin Productions web site at [www.ysu.edu/penguin\\_pro](http://www.ysu.edu/penguin_pro). ■



Members of the board of Penguin Productions take a break to pose for a photo prior to the Ludacris concert on April 5 at the Chevrolet Centre in downtown Youngstown. Pictured from the left are student Wilson Okello; Jack Rigney, director of campus recreation and intramural sports; Melanie Koontz, coordinator of SCOPE; student Amanda Polles; Shannon Reesh, coordinator in the Center for Student Progress; student Carrie Anderson; and Joy Polkabila Byers, assistant director of programs and special events in Campus Recreation and Intramural Sports. Penguin Productions is run by a board consisting of 12 students and 12 advisors.

## Youngstown STATE UNIVERSITY

The YSUUpdate is published every other week during the academic year and once a month in the summer by the Office of Marketing and Communications. 8-003

Marketing and Communications  
133 Tod Hall, Youngstown, Ohio 44555-3519  
[racole01@ysu.edu](mailto:racole01@ysu.edu) 330-941-3519

# Distinguished Professor, Watson Merit awards

The following YSU faculty members have been chosen Distinguished Professors for 2006-07. Nominations are made by students, faculty, department chairs and deans. A committee of past distinguished professors and representatives from the administration selects candidates.

## For excellence in teaching

**Rangamohan V. Ennui**, Department of Management; **Timothy Francisco**, Department of English; **Jean T. Hassell**, Department of Human Ecology; **Debbie Juruaz**, Department of Health Professions; **G. Jay Kerns**, Department of Mathematics and Statistics; and **Zara Shah Rowlands**, Department of Human Ecology.

## For excellence in scholarship

**Salvatore Attardo**, Department of

English; **James J. Carroll**, Department of Physics and Astronomy; **Kelli A. Connell**, Department of Art; **Stephen E. Rodabaugh**, Department of Mathematics and Statistics; and **Mark F. Toncar**, Department of Marketing.

## For excellence in public service

**William R. Buckler**, Department of Geography; **Iole Checcone**, Department of Foreign Languages and Literatures; **Patrick R. Durrell**, Department of Physics and Astronomy; **Cary Horvath**, Department of Communication and Theater; **Victoria E. Kress**, Department of Counseling and Special Education; **Anne M. McMahon**, Department of Management; **Sharon P. Shipton**, Department of Nursing; and **Victor Wan-Tatah**, Department of Philosophy and Religious Studies.

## For excellence in university service

**Annette M. Burden**, Department of Mathematics and Statistics; **Gung-Hwa (Andy) Chang**, Department of Mathematics and Statistics; **William D. Jenkins**, Department of History; **Stephanie Smith**, Department of Art; and **William G. Vendemia**, Department of Management.

## Watson Merit Awards

The Watson Merit Award is given to outstanding department chairpersons for administrative performance. The selection committee is made up of the provost, the dean of graduate studies and research, and the executive director of human resources. This year's recipients are **Joseph J. Mistovich**, Department of Health Professions; and **Susan C. Russo**, Department of Art. ■

# Faculty & Staff

Send items for "Faculty & Staff" to [wawolfgang@ysu.edu](mailto:wawolfgang@ysu.edu).

**Jonelle Beatrice**, associate executive director, Student Life, and director, Center for Student Progress, and **Angie Kearns**, coordinator, Center for Student Progress First-Year Student Services, presented a workshop on peer mentoring at the 2007 National Association of Developmental Education in Nashville, Tenn.

**Karen Becker**, coordinator, Reading and Study Skills Center, presented "Helping Kids Make Choices" at Making Connections: Central Ohio Trainer's Co-Op Treatment Conference in Columbus.

**Catherine Cala**, director, University Development, served on the faculty at the recent Council for Advancement and Support of Education Persuasive Development Writing conference in Pittsburgh. She co-presented the major gifts session.

**Rangamohan Eunni**, assistant professor, Management, has been appointed the regional editor of *The Americas, International Journal of Emerging Markets*. *IJoEM* is an international, peer-reviewed forum to explore factors affecting business and management in emerging markets and brings together the latest theoretical and empirical management research in

emerging markets.

**Dorcas Fitzgerald**, professor, Nursing, co-presented "Nursing Faculty – Collegial or 'Mean Girls?'" at the Creative Teaching for Nursing Educators' Conference in Memphis, Tenn. The presentation is based on Fitzgerald's national research study, "A Descriptive Study of Faculty Collegiality in Nursing Educational Programs."

**Bob Hogue**, associate professor, Computer Science and Information Systems, presented "Creating Web-based Surveys with PHPSurveyor" at the 2007 Annual Higher Education Conference of the National Education Association in San Diego.

**Sylvia J. Imler**, assistant professor, and team members, **Sally A. Lewis**, assistant professor, **Marianne K. Dove**, professor and **Kenneth Miller**, associate professor, all of Counseling and Special Education, received a \$30,000 grant from the Department of Education Office for Exceptional Children: Special Education Personnel Development Advisory Committee. This is the second ODE grant they received for their proposal, "Reducing the Achievement Gap in Ohio: Implementing OISM to Prepare Graduates of

Youngstown State University to Meet the Needs of All Students, Phase II."

**Tom Oder**, assistant professor, Physics and Astronomy, presented "Improved Schottky Contacts on Wide Band Gap Semiconductors" to the Department of Physics at Cleveland State University.

**Jake J. Protivnak**, assistant professor, Counseling and Special Education, presented "The Good, Bad, and Ugly: Results of a National Study on the Experiences of Counselor Education Doctoral Students" and "Career Development Competencies and Juvenile Delinquents: An Exploratory Study" at the American Counseling Association 2007 Conference in Detroit.

**Paul Rohrbaugh**, instructor, Educational Foundations, Technology, Research and Leadership, had the article, "Reluctant Warrior: President McKinley and the Declaration of War Against Spain" published in the March 2007 issue of the journal *Against the Odds*. The article deals with the issues and events surrounding President McKinley and his cabinet leading up to the war. ■



## CLASS dean

(Continued from page 1)

know better and engage with the first-class faculty, staff and students of the university. Together, we will create opportunities in the lives of citizens in the Mahoning Valley.”

In his current position, Furnish leads a diverse group of full-time faculty members, mostly tenure-track and tenured, in the disciplines of English, French, German, Japanese, Spanish, philosophy, and religion. He recently participated in the second successful Southern Association of Colleges and Schools self-study and re-accreditation process for WTU.

The YSU search committee, chaired by Paul Kobulnicky, executive director of Maag Library, consisted of representatives of the nine departments in the new CLASS college. Furnish was selected from a pool of 59 candidates.

“The committee was pleased to be able to present a strong pool of candidates to campus,” Kobulnicky said. “From the committee’s perspective, Dr. Furnish was a powerful and articulate spokesperson for the future of CLASS. He communicated a deep appreciation for the work of faculty and his belief in the fundamental importance of responsibilities to students.”

Comments submitted from the campus community in support of Furnish said he was open to diversity, answered questions in concrete terms, has a sense of humor and humility, is vibrant, personable and willing to accept challenges and cooperate. ■

## Phase two

(Continued from page 1)

ing the road, curbs and sidewalks, new lights, placing utilities underground and landscaping.

Similar improvements are being made on Elm Street between the parking lot at Fedor Hall to the Madison Avenue Expressway service road.

The work on University Plaza is the second phase of the East Campus Gateway

plan. The first phase, finished in summer 2005, included the renovation of two major parking lots on University Plaza.

Those parking lots will remain open and will be accessible during the second phase construction. Alternative routes to those lots will be announced at a later time. ■



### Eyesore no more...

Workers demolish a dilapidated, vacant house across from the YSU police station on Fifth Avenue on April 9. In all, the city tore down three houses along Fifth Avenue, a major entranceway to the university. The owner of the houses said he plans to sell the property.