

News • Briefs

YOUNGSTOWN STATE UNIVERSITY

Dec. 19, 2011

Contact: Ron Cole, director of University Communications, 330-941-3285

Featured in this week's YSU News Briefs:

- YSU's WATTS announces open track program
- Economics professor named Associate Provost
- University goes paperless
- Faculty awards, publications, presentations

This Week

Thursday, Dec. 22,

7:05 p.m. The YSU men's basketball team takes on Robert Morris in Beegly Center.

Wednesday, Dec. 21, noon and 1 p.m. The Ward Beecher Planetarium shows Holiday Lights. Visit www.wbplanetarium.org.

Friday, Dec. 23, through Monday, Dec. 26. University closed.

YSU's WATTS announces open track program

If you're about to make that annual New Year's resolution to start a serious exercise program, you may want to work Youngstown State University's WATTS into your plans.

The Watson and Tressel Training Site, YSU's new indoor athletics facility, will be open to the public for a 10-week open track program 6 to 8 p.m. Mondays through Thursdays, Jan. 3 through March 8. Note that the program will not be held on Jan. 16 (Martin Luther King Jr. Day) and also will not be held if YSU closes due to weather.

The cost is \$3 per person. Admission is free for YSU faculty, staff and students with a valid university ID.

"This is a great opportunity for the community to share in this state-of-the-art facility," said Trevor Parks, YSU sports information director.

The facility will be open for running, walking, jogging and hurdles on the track. One long-jump pit will be open for practice, and one high-jump mat with a bungee bar will be available for practice. The pole vault area will not be available. The field



The WATTS, YSU's new state-of-the-art indoor athletics facility, will be open to the public for a 10-week open track program Jan. 3 through March 8. Read more in this issue of the *YSU News Briefs*. This is the final edition of the *YSU News Briefs* for 2011. Happy Holidays and Happy New Year!

will be open for throwing shot put and discus (one event on each end).

Restrooms are available, however showers/lockers are not. Parking is available in YSU lots for \$5. Participants may be dropped at the front door of the WATTS.

For additional guidelines visit <http://www.ysusports.com/information/facilities/WATTS-information> or call 330-941-2887.

Opened this fall, WATTS is located to the east of Stambaugh Stadium and the YSU tennis courts and features a 300-meter state-of-the-art mondo surface track and a full-length Shaw Sportexe PowerBlade HP+ synthetic turf system football field. The facility is named after the Tressel and Watson families, who donated \$1 million for the project.



Teresa Riley

Economics professor named Associate Provost

Teresa Riley, professor of Economics and director of Faculty Relations at Youngstown State University, will assume the position of YSU Associate Provost for Academic Administration on Jan. 1, 2012.

She replaces Charles Singler, who is retiring Dec. 31.

Riley, a faculty member in the Department of Economics since 1984, earned a bachelor's degree from Wittenburg University and master's and doctoral degrees from Syracuse University. She also has served as Associate Dean in the College of Arts and Sciences in 2006-07, Associate Dean in the College of Liberal Arts and Social Sciences in 2007-08, and Acting Chair of the Department of Economics from 2008-09.

Riley's responsibilities will include providing leadership on behalf of and as delegated by the Provost in areas of academic resource planning and management, programming evaluation, and personnel activities of the Division of Academic Affairs. She will be working closely with academic deans and executive directors in advancing the academic enterprise, and in guiding strategic processes of the Academic Division and

of the University.

University moves to paperless time cards, leave forms

Paper time cards and vacation and sick leave forms will soon be a part of the past as Youngstown State University transitions into a new computer-based system.

"We hope to fully implement a system that will eliminate the burdensome, manual process that we now have in place to file these types of documents," said Paul Kobulnicky of the Office of Finance and Administration and leader of the Banner Web Time and Web Exception project team.

"This new system is faster, more accurate and will lead to greater efficiencies across campus."

Over the course of the next year, YSU's Human Resources and Payroll departments will implement the system that allows for the submission and approval of all time cards, vacation, sick and other leave documents to be done via the campus network or the Internet.

"A successful implementation will require the involvement of all employees, student employees, supervisors and departments," Kobulnicky said.

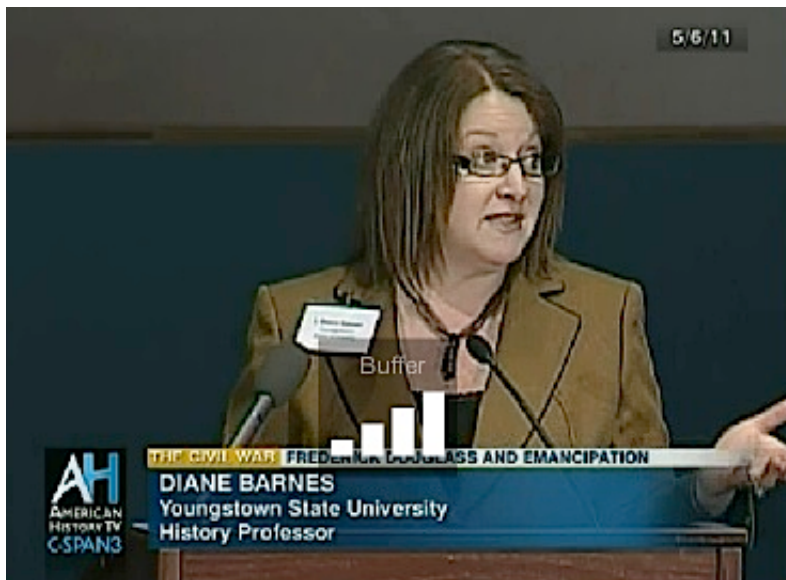
As a first step, the university is verifying organizational structures and supervisory relationships throughout the campus. A small pilot program will be launched in the spring of 2012. Kobulnicky said the plan is to first process student employees under the new system starting in the summer session. Classified employees will be brought into the system in fall 2012, followed by all other employee groups.

Kobulnicky said all employees and supervisors will be trained on the new system as it is rolled out to ensure that employees know how to submit data properly and that supervisors know how to review and approve submissions. He said more information will be forthcoming in the months ahead.

Other members of the project team are Lisa Reichert of Payroll; Steve Lucivjansky of Human Resources; and Rick Marsico, Donna Madasci and Lori Hinebaugh of Computer Services.



Paul Kobulnicky



Diane Barnes, YSU associate professor of History, speaks at the U.S. Capitol Historical Society's annual Spring Symposium.

YSU faculty/staff awards, presentations, publications

Diane Barnes, associate professor, History, was a speaker at the U.S. Capitol Historical Society's annual Spring Symposium, the theme of which was "Emancipation during the Civil War." Her presentation, titled "Frederick Douglass and the Complications of Emancipation," discussed how Douglass helped convince Abraham Lincoln that he must act on the issue of emancipation. Barnes' speech was rebroadcast on C-Span 3 and is available at <http://www.c-spanvideo.org/program/Douglassan>.

Zbigniew Piotrowski, professor, Mathematics and Statistics, gave a talk titled "An Extension of Michael-Namioka Theorem on PCP and Weakly Developable

Spaces" during his research stay at the Institute of Mathematics, Slovak Academy of Sciences, in Bratislava, Slovakia. Piotrowski also made a presentation titled "On Volterra Spaces" during his

research stay at M. Bela University in Banska Bystrica, Slovakia.

Ronald P. Volpe, professor, Lariccia School of Accounting and Finance, co-authored an article titled "An Analysis of Personal Financial Literacy Among College Students" and published in *Financial Services Review*, which is the academic journal's second most cited article, according to an analysis by Professor of Consumer Sciences Sherman D. Hanna, et.al., at Ohio State University. Volpe's article, co-authored with former YSU colleague **Haiyang Chen** in 1998, has been cited 90 times in education, consumer sciences, policy and finance journals. Volpe and Chen also co-authored two other articles in the journal, which together were cited 143 times, making them *Financial Services Review's* most cited authors, according to a Google Scholar Research study and the Sherman D. Hanna, et.al. analysis.

Susanne Miller, pre-nursing advisor, **Cheryl Bosley**, associate professor of Nursing, and **Amy Novak**, student nurse, made a presentation at a conference sponsored collaboratively by the Kent Academic Support and Advising Association and the Academic Advisors at the University of Akron. The presentation, titled "Many Hats, Many Roles: The Joys and Challenges of Advising Pre-Nursing Students," discussed perspectives on advising pre-nursing and nursing majors.

Steve Taraszewski, senior research analyst, Institutional Research and Policy Analysis, and **Birsen Karpak**, professor, Management, presented "An Examination of the Knowledge Chain Linkage between Knowledge Storage/Retrieval and Knowledge Transference" at the 21st International Conference on Multiple Criteria Decision Making in Jyväskylä, Finland.

Michael T. Butcher, assistant professor, Biological Sciences, has co-authored three articles for publication in *The Journal of Experimental Biology*: "Femora loading mechanics in Virginia opossums (*Didelphis virginiana*): torsion and mediolateral bending in mammalian parasagittal locomotion," "In vivo strain in the femur of the opossum (*Didelphis virginiana*) during terrestrial locomotion: testing hypotheses of evolutionary shifts in bone loading and design," and "Locomotor loading mechanics in the hindlimbs of tegu lizards (*Tupinambis merianae*): comparative and evolutionary implications."

Stephen Ray Flora, professor, Psychology, presented a workshop titled "Behavior Analytic Training for Health, Life, Fitness, and Peak Personal Performance" at the Association for Behavior Analysis International Convention in Denver. Flora also gave two presentations at the convention, titled "Molar Variables Controlling Gambling Behavior and the Resulting Aversive Personal and Detrimental National Consequences" and "Myths and Realities of Card Counting in Blackjack or How to Become a Compulsive Gambler." Finally, he partnered with graduate student **Courtney Allyn Polenick** (M.S. applied behavior analysis) in a research presentation titled "Polenick C. & Flora, S.R. Effects of Social Reinforcement Contingent on Conventional or Unconventional Responses on Generalized Creativity by Older Adults."



Michael Butcher